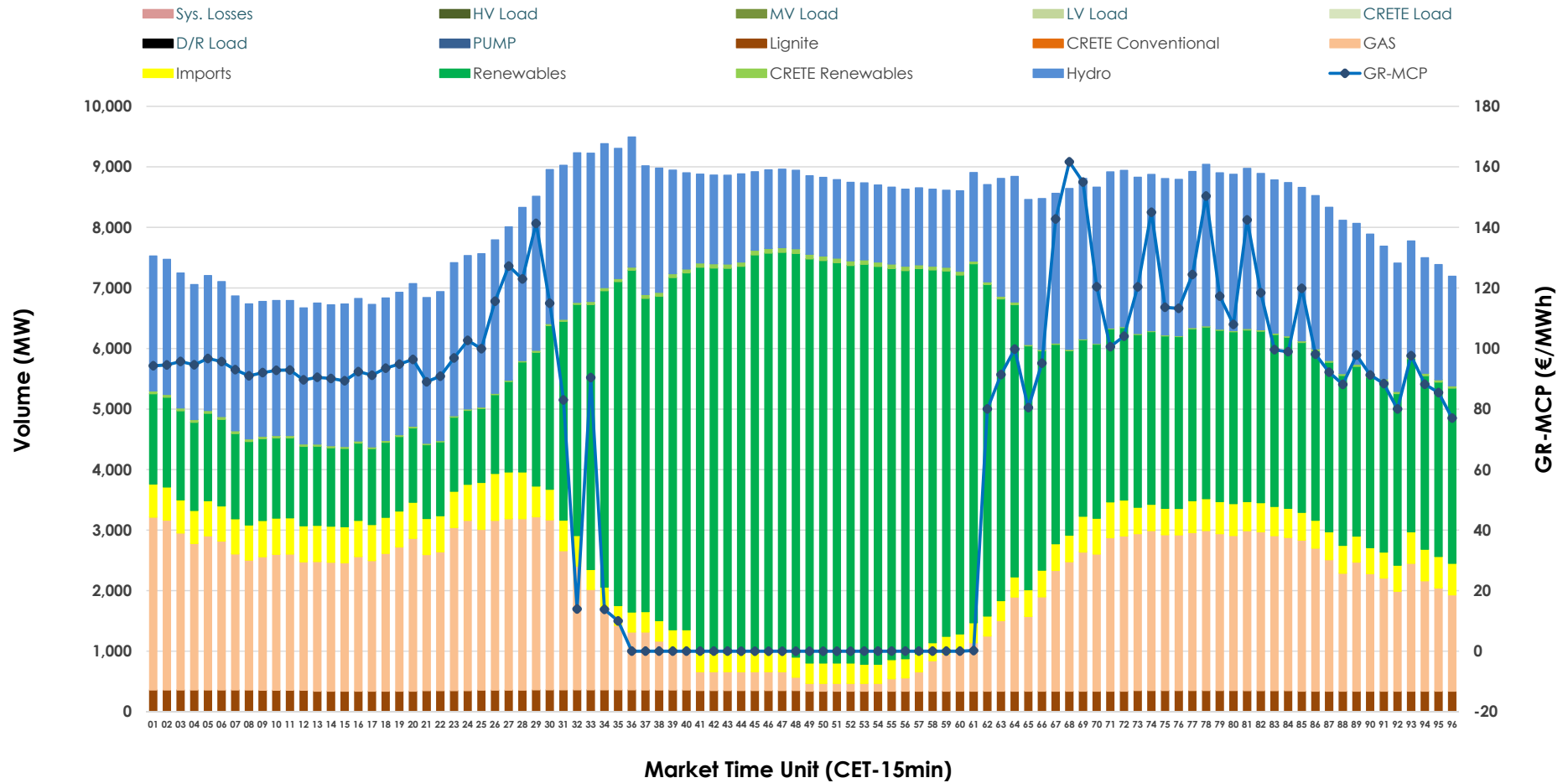


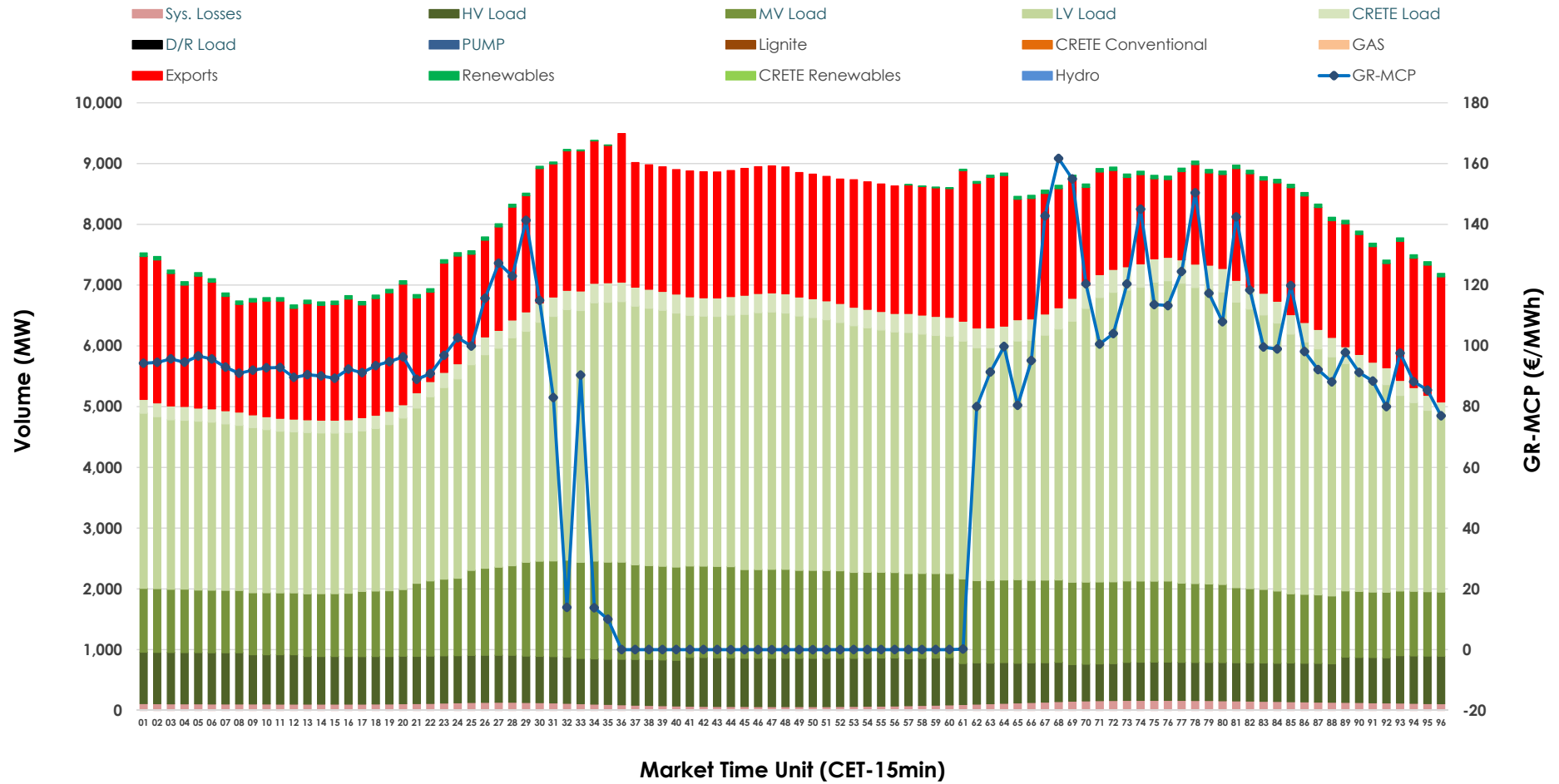


Day-Ahead Market Outlook

19.02.2026 Day-Ahead Market - Sell



19.02.2026 Day-Ahead Market - Buy



GR Bidding Zone Weekly Figures

Delivery Day	13.02	14.02	15.02	16.02	17.02	18.02	19.02
	↗ 9%	↘ -28%	↘ -59%	↗ 166%	↘ -20%	↘ -10%	↗ 39%
Avg.MCP (€/MWh)	91.43	65.70	27.10	71.96	57.80	52.05	72.50
Max.MCP (€/MWh)	141.81	116.13	96.30	163.98	152.38	173.32	161.66
Min.MCP (€/MWh)	0.01	0.01	-0.10	0.00	0.00	-1.01	-0.01
	↘ -4%	↘ -4%	↘ -10%	↗ 7%	↗ 9%	↔ 0%	↘ -3%
Tot.Vol(GWh)	404.98	386.76	348.20	372.50	405.83	406.30	394.81

Trades by Order Type

Delivery Day		13.02	14.02	15.02	16.02	17.02	18.02	19.02	
Ord Price Type		Sell & Buy Trades in (GWh) per Price Type							(%)
PPT	(S)	104.129	102.419	106.090	101.437	116.187	116.225	114.204	57.85%
HBD	(S)	68.013	69.070	60.657	65.090	67.805	66.379	62.963	31.89%
BLK	(S)	28.714	21.890	7.351	19.722	14.780	20.466	19.776	10.02%
CPL	(S)	1.634	0.000	0.000	0.000	4.142	0.078	0.464	0.24%
PPT	(B)	13.224	12.407	13.254	14.176	12.318	13.438	12.892	6.53%
HBD	(B)	146.580	137.891	127.444	137.125	153.387	151.624	151.249	76.62%
BLK	(B)	0.000	0.000	0.000	0.000	0.000	0.000	0.000	0.00%
CPL	(B)	42.686	43.080	33.399	34.948	37.209	38.086	33.266	16.85%
		Sell & Buy Orders Traded per Price Type							(%)
PPT	(S)	2309	2270	2169	2324	2508	2477	2482	48.70%
HBD	(S)	2811	2763	2249	2572	2512	2390	2604	51.09%
BLK	(S)	11	9	3	10	6	11	11	0.22%
PPT	(B)	2231	2341	2367	2366	2323	2393	2332	36.69%
HBD	(B)	4012	4210	4372	4040	4233	4317	4024	63.31%
BLK	(B)	0	0	0	0	0	0	0	0.00%

MCP Market Clearing Price (€/MWh)
PPT Priority Price-Taking
HBD Hybrid
BLK Block
CPL Market Coupling Flow

Trade's Volume Mix

		Sell - MWh	Buy - MWh	
Lignite	(4.2%)	8,350	0	(0.0%)
Crete Conv.	(0.0%)	0	0	(0.0%)
Gas	(21.2%)	41,945	0	(0.0%)
Hydro	(25.8%)	50,942	0	(0.0%)
Imports	(5.7%)	11,275		
RES	(42.5%)	83,896	893	(0.5%)
Crete RES	(0.5%)	998	0	(0.0%)
HV Load	(0.0%)	0	17,815	(9.0%)
MV Load	(0.0%)	0	31,027	(15.7%)
LV Load	(0.0%)	0	90,571	(45.9%)
Crete Load	(0.0%)	0	7,164	(3.6%)
Pumping	(0.0%)	0	0	(0.0%)
Exports			47,233	(23.9%)
Sys.Losses	(0.0%)	0	2,704	(1.4%)
D/R Load	(0.0%)	0	0	(0.0%)

