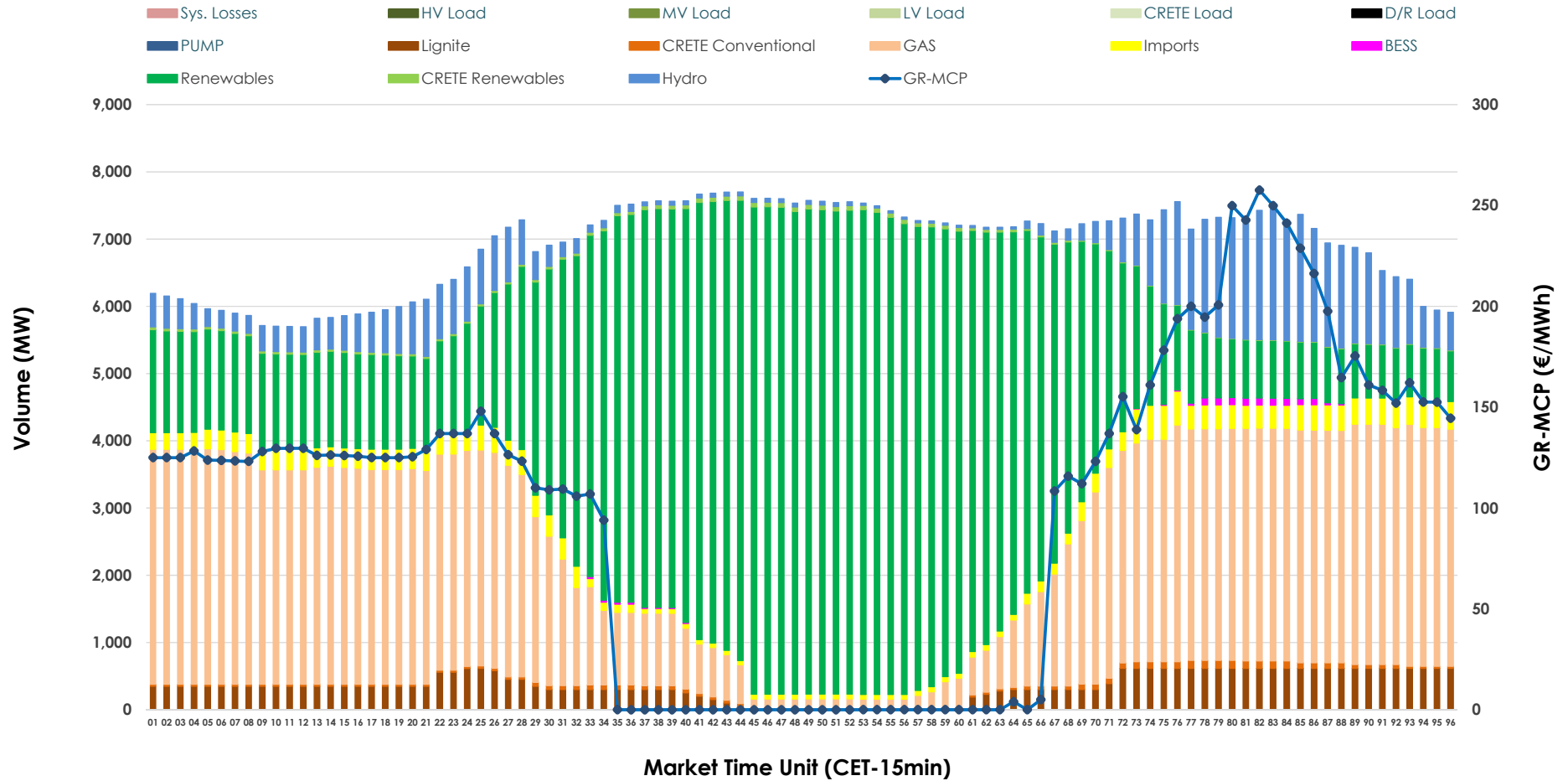


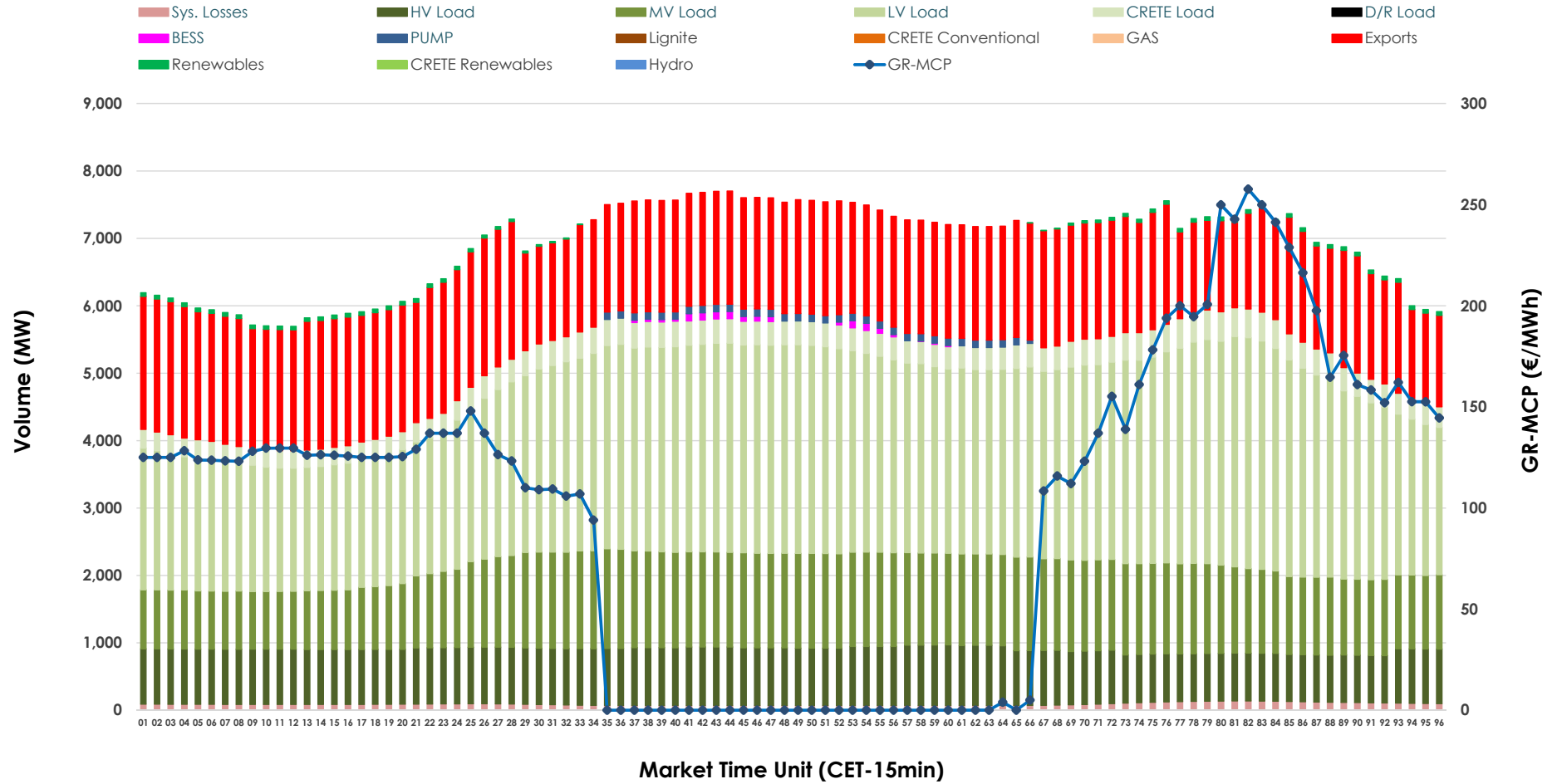


Day-Ahead Market Outlook

18.05.2026 Day-Ahead Market - Sell



18.05.2026 Day-Ahead Market - Buy



GR Bidding Zone Weekly Figures

Delivery Day	12.05	13.05	14.05	15.05	16.05	17.05	18.05
	👇 -19%	👆 20%	👉 -1%	👇 -3%	👇 -15%	👇 -4%	👆 32%
Avg.MCP (€/MWh)	78.99	95.00	94.38	91.65	78.36	75.20	99.62
Max.MCP (€/MWh)	196.70	187.34	236.73	170.33	136.89	168.83	257.62
Min.MCP (€/MWh)	-0.10	0.00	0.00	0.00	0.02	-1.01	0.00
	👆 7%	👇 -2%	👆 2%	👇 -2%	👇 -10%	👆 1%	👆 8%
Tot.Vol(GWh)	340.95	335.77	342.44	335.47	303.35	306.87	331.83

Trades by Order Type

Delivery Day		12.05	13.05	14.05	15.05	16.05	17.05	18.05	
Ord Price Type		Sell & Buy Trades in (GWh) per Price Type							(%)
PPT	(S)	77.219	70.214	71.021	68.237	63.469	71.721	64.313	38.76%
HBD	(S)	74.127	78.723	72.208	72.381	66.338	64.208	71.127	42.87%
BLK	(S)	19.129	18.946	27.992	27.116	21.857	17.507	30.478	18.37%
CPL	(S)	0.000	0.000	0.000	0.000	0.013	0.000	0.000	0.00%
PPT	(B)	15.151	15.355	15.696	16.044	14.299	13.770	14.491	8.73%
HBD	(B)	129.213	128.880	127.499	125.379	121.066	111.681	121.731	73.37%
BLK	(B)	0.000	0.000	0.000	0.000	0.000	0.000	0.000	0.00%
CPL	(B)	26.110	23.648	28.027	26.310	16.311	27.985	29.695	17.90%
		Sell & Buy Orders Traded per Price Type							(%)
PPT	(S)	1764	1686	1757	1720	1725	1722	1768	35.04%
HBD	(S)	2989	3378	3419	3324	3475	2870	3267	64.76%
BLK	(S)	6	8	9	8	8	11	10	0.20%
PPT	(B)	2327	2367	2353	2357	2402	2387	2317	38.53%
HBD	(B)	4077	4041	4071	4036	3969	3918	3696	61.47%
BLK	(B)	0	0	0	0	0	0	0	0.00%

MCP Market Clearing Price (€/MWh)
PPT Priority Price-Taking
HBD Hybrid
BLK Block
CPL Market Coupling Flow

Trade's Volume Mix

	Sell - MWh	Buy - MWh	
Lignite (5.1%)	8,478	0	(0.0%)
Crete Conv. (0.7%)	1,226	0	(0.0%)
Gas (32.9%)	54,613	0	(0.0%)
Hydro (8.1%)	13,417	0	(0.0%)
Imports (3.5%)	5,851		
RES (48.9%)	81,176	743	(0.4%)
Crete RES (0.5%)	853	0	(0.0%)
BESS (0.2%)	304	295	(0.2%)
HV Load (0.0%)	0	19,486	(11.7%)
MV Load (0.0%)	0	29,538	(17.8%)
LV Load (0.0%)	0	63,936	(38.5%)
Crete Load (0.0%)	0	8,191	(4.9%)
Pumping (0.0%)	0	865	(0.5%)
Exports		40,711	(24.5%)
Sys.Losses (0.0%)	0	2,153	(1.3%)
D/R Load (0.0%)	0	0	(0.0%)

