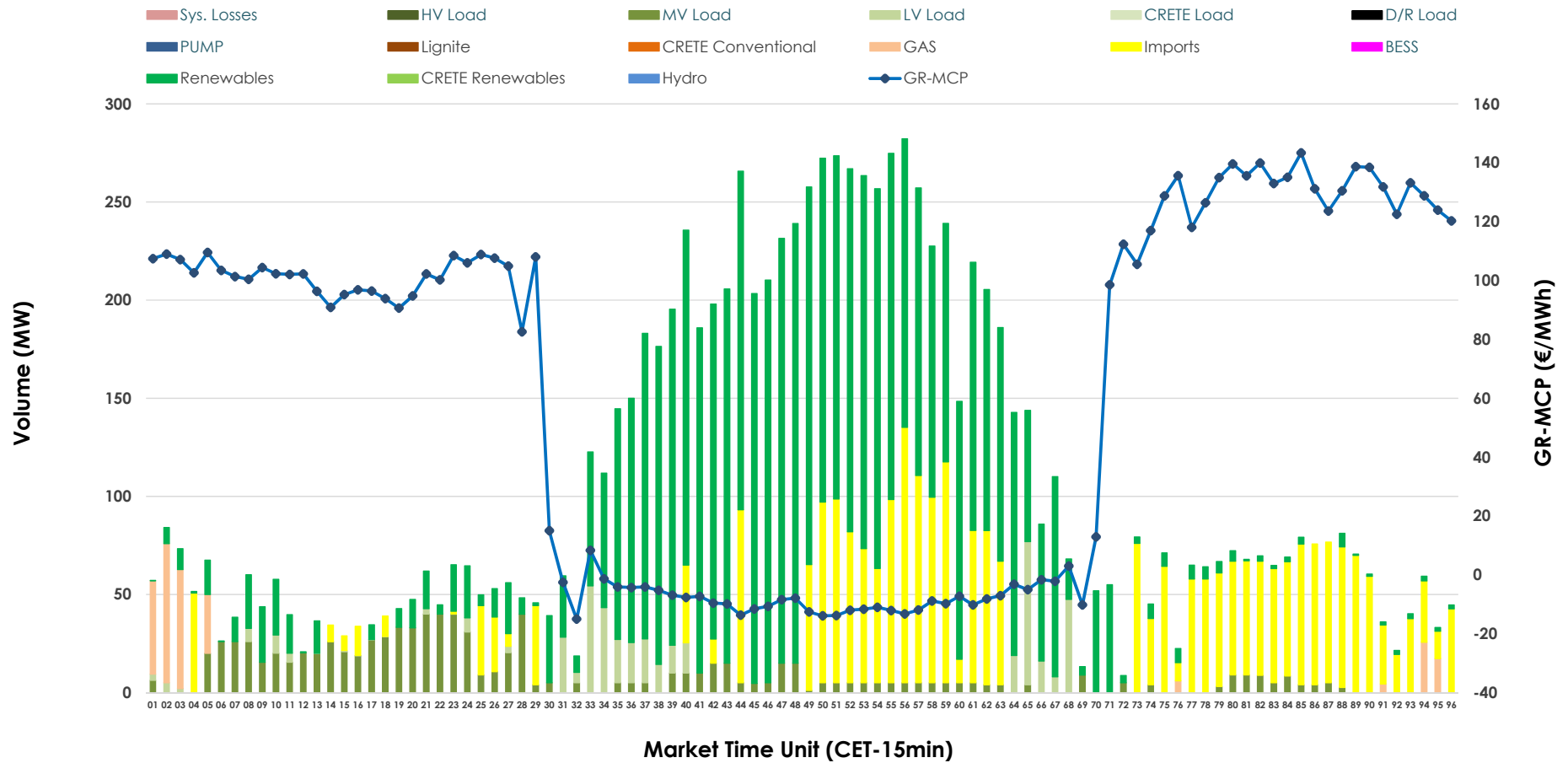


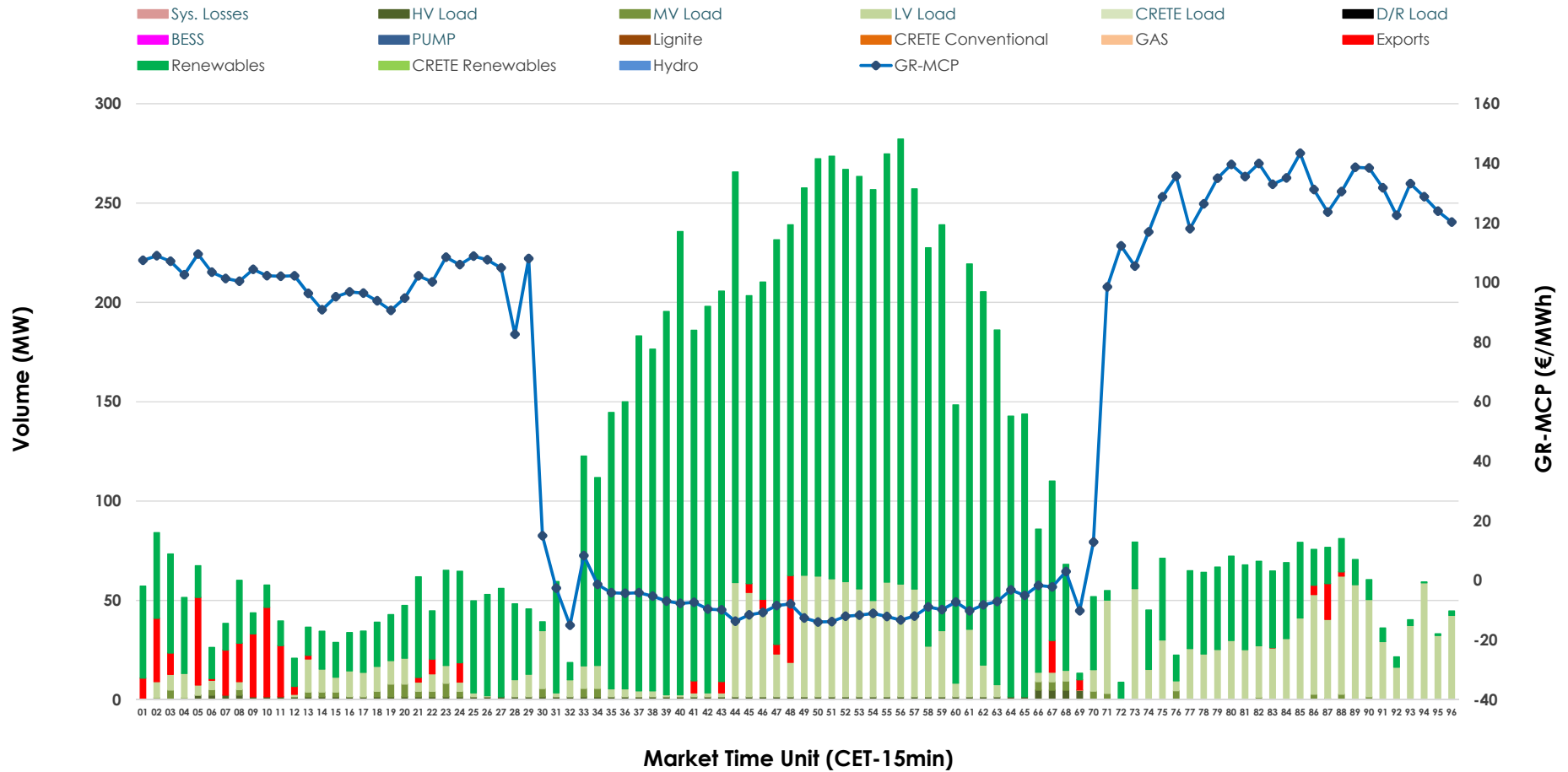


IDA '2' Market Outlook

18.04.2026 IDA '2' Market - Sell



18.04.2026 IDA '2' Market - Buy



GR Bidding Zone Weekly Figures

Delivery Day	12.04	13.04	14.04	15.04	16.04	17.04	18.04
	👇 -2%	👈 20%	👆 41%	👇 -8%			👇 -16%
Avg.MCP (€/MWh)	82.08	98.24	138.59	126.89	N/M	73.93	62.35
Max.MCP (€/MWh)	162.77	164.38	261.33	188.32	N/M	175.78	143.35
Min.MCP (€/MWh)	-12.45	2.00	86.61	82.00	N/M	-13.57	-15.00
	👈 8%	👆 43%	👇 -51%	👆 167%			👆 43%
Tot.Vol(GWh)	4.02	5.74	2.78	7.43	N/M	3.62	5.16

Trades by Order Type

Delivery Day		12.04	13.04	14.04	15.04	16.04	17.04	18.04	
Ord Price Type		Sell & Buy Trades in (GWh) per Price Type							(%)
PPT	(S)	0.000	0.000	0.000	0.000		0.000	0.000	0.00%
HBD	(S)	1.311	1.800	0.620	1.018		1.163	1.881	72.85%
BLK	(S)	0.000	0.000	0.000	0.000		0.000	0.000	0.00%
CPL	(S)	0.700	1.070	0.772	2.700		0.645	0.701	27.15%
PPT	(B)	0.000	0.000	0.000	0.000		0.000	0.000	0.00%
HBD	(B)	1.149	1.419	1.141	1.789		0.995	2.486	96.29%
BLK	(B)	0.000	0.000	0.000	0.000		0.000	0.000	0.00%
CPL	(B)	0.862	1.450	0.252	1.929		0.813	0.096	3.71%
		Sell & Buy Orders Traded per Price Type							(%)
PPT	(S)	0	0	0	0		0	0	0.00%
HBD	(S)	369	370	197	188		234	223	100.00%
BLK	(S)	0	0	0	0		0	0	0.00%
PPT	(B)	0	0	0	0		0	0	0.00%
HBD	(B)	571	448	369	479		335	471	100.00%
BLK	(B)	0	0	0	0		0	0	0.00%

MCP Market Clearing Price (€/MWh)
PPT Priority Price-Taking
HBD Hybrid
BLK Block
CPL Market Coupling Flow

Trade's Volume Mix

	Sell - MWh	Buy - MWh	
Lignite (0.0%)	0	0	(0.0%)
Crete Conv. (0.0%)	0	0	(0.0%)
Gas (2.5%)	66	0	(0.0%)
Hydro (0.0%)	0	0	(0.0%)
Imports (27.2%)	701		
RES (57.3%)	1,479	1,932	(74.8%)
Crete RES (0.0%)	0	0	(0.0%)
BESS (0.0%)	0	0	(0.0%)
HV Load (0.0%)	0	28	(1.1%)
MV Load (8.7%)	224	25	(1.0%)
LV Load (4.3%)	112	502	(19.4%)
Crete Load (0.0%)	0	0	(0.0%)
Pumping (0.0%)	0	0	(0.0%)
Exports		96	(3.7%)
Sys.Losses (0.0%)	0	0	(0.0%)
D/R Load (0.0%)	0	0	(0.0%)

