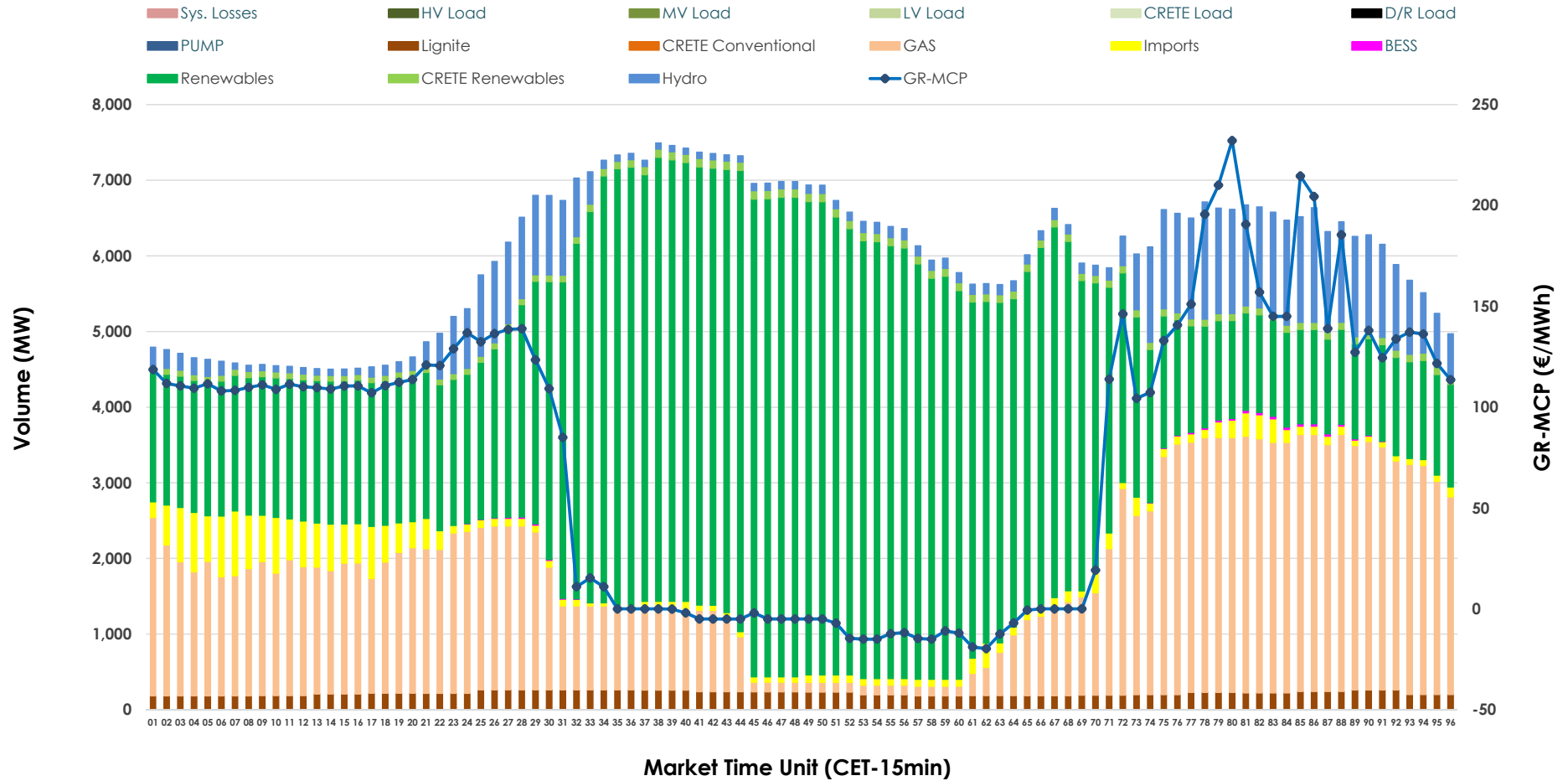


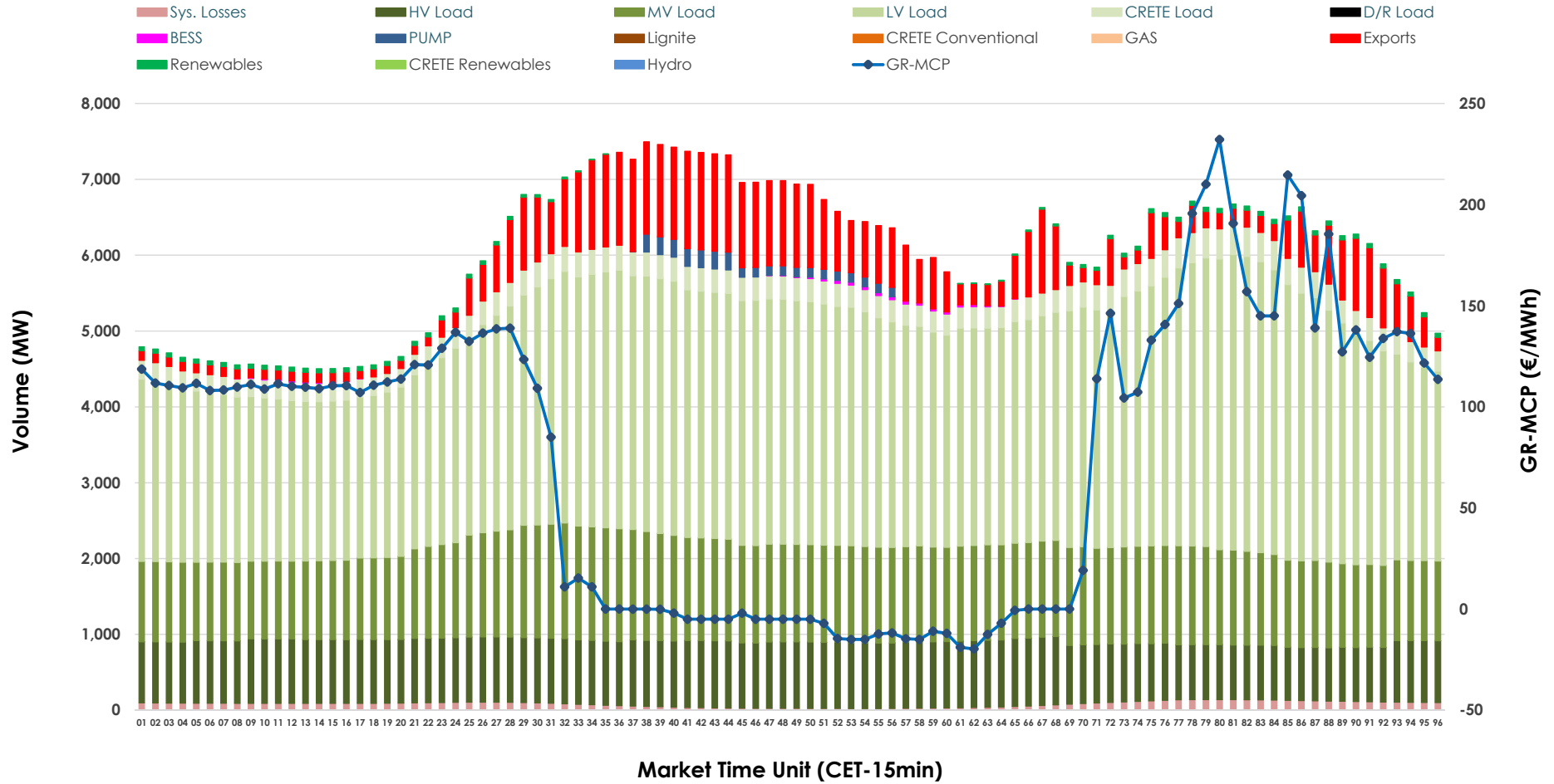


Day-Ahead Market Outlook

24.04.2026 Day-Ahead Market - Sell



24.04.2026 Day-Ahead Market - Buy



GR Bidding Zone Weekly Figures

Delivery Day	18.04	19.04	20.04	21.04	22.04	23.04	24.04
	↓ -13%	↗ 6%	↗ 16%	→ 0%	↑ 38%	↓ -23%	↓ -13%
Avg.MCP (€/MWh)	67.33	71.68	83.41	83.07	114.50	88.12	76.59
Max.MCP (€/MWh)	151.85	166.45	179.47	175.83	292.39	238.11	232.13
Min.MCP (€/MWh)	-9.50	-8.30	-0.10	-0.01	9.20	0.00	-19.68
	↓ -8%	↓ -11%	↗ 12%	↗ 3%	↓ -5%	↗ 8%	↓ -6%
Tot.Vol(GWh)	292.47	260.85	293.37	302.62	286.00	307.65	289.22

Trades by Order Type

Delivery Day		18.04	19.04	20.04	21.04	22.04	23.04	24.04	
Ord Price Type		Sell & Buy Trades in (GWh) per Price Type							(%)
PPT	(S)	71.097	54.859	50.668	56.261	52.662	53.859	58.112	40.19%
HBD	(S)	58.837	50.588	64.774	64.943	54.230	64.423	56.577	39.12%
BLK	(S)	15.650	19.613	21.500	24.410	26.046	27.200	26.900	18.60%
CPL	(S)	0.653	5.365	9.746	5.696	10.061	8.343	3.021	2.09%
PPT	(B)	12.306	11.769	12.952	12.970	12.705	12.529	12.315	8.52%
HBD	(B)	119.439	111.146	124.208	122.287	123.424	138.995	124.015	85.76%
BLK	(B)	0.000	0.000	0.000	0.000	0.000	0.000	0.000	0.00%
CPL	(B)	14.493	7.510	9.527	16.052	6.871	2.301	8.279	5.73%
		Sell & Buy Orders Traded per Price Type							(%)
PPT	(S)	1502	1522	1582	1687	1670	1645	1653	38.88%
HBD	(S)	2380	2585	2893	2905	3209	3014	2583	60.76%
BLK	(S)	8	12	8	11	11	14	15	0.35%
PPT	(B)	2270	2258	2318	2312	2317	2217	2275	35.62%
HBD	(B)	4214	4123	4138	4183	4081	4532	4111	64.38%
BLK	(B)	0	0	0	0	0	0	0	0.00%

- MCP** Market Clearing Price (€/MWh)
- PPT** Priority Price-Taking
- HBD** Hybrid
- BLK** Block
- CPL** Market Coupling Flow

Trade's Volume Mix

	Sell - MWh	Buy - MWh	
Lignite (3.6%)	5,244	0	(0.0%)
Crete Conv. (0.0%)	0	0	(0.0%)
Gas (28.0%)	40,494	0	(0.0%)
Hydro (8.3%)	11,969	0	(0.0%)
Imports (3.6%)	5,275		
RES (54.8%)	79,269	786	(0.5%)
Crete RES (1.5%)	2,237	0	(0.0%)
BESS (0.1%)	121	142	(0.1%)
HV Load (0.0%)	0	19,810	(13.7%)
MV Load (0.0%)	0	29,604	(20.5%)
LV Load (0.0%)	0	70,701	(48.9%)
Crete Load (0.0%)	0	7,242	(5.0%)
Pumping (0.0%)	0	787	(0.5%)
Exports		13,596	(9.4%)
Sys.Losses (0.0%)	0	1,942	(1.3%)
D/R Load (0.0%)	0	0	(0.0%)

