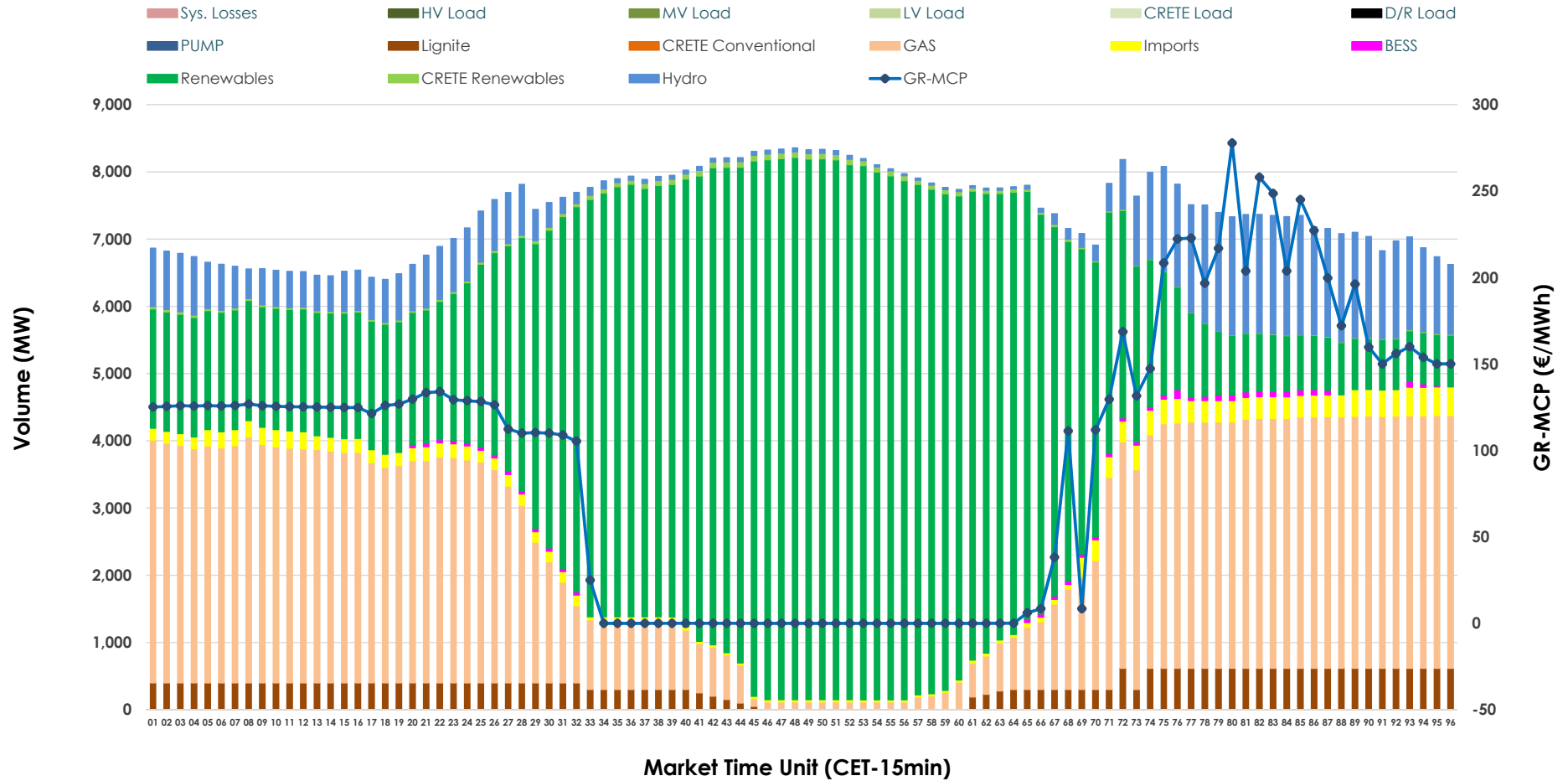


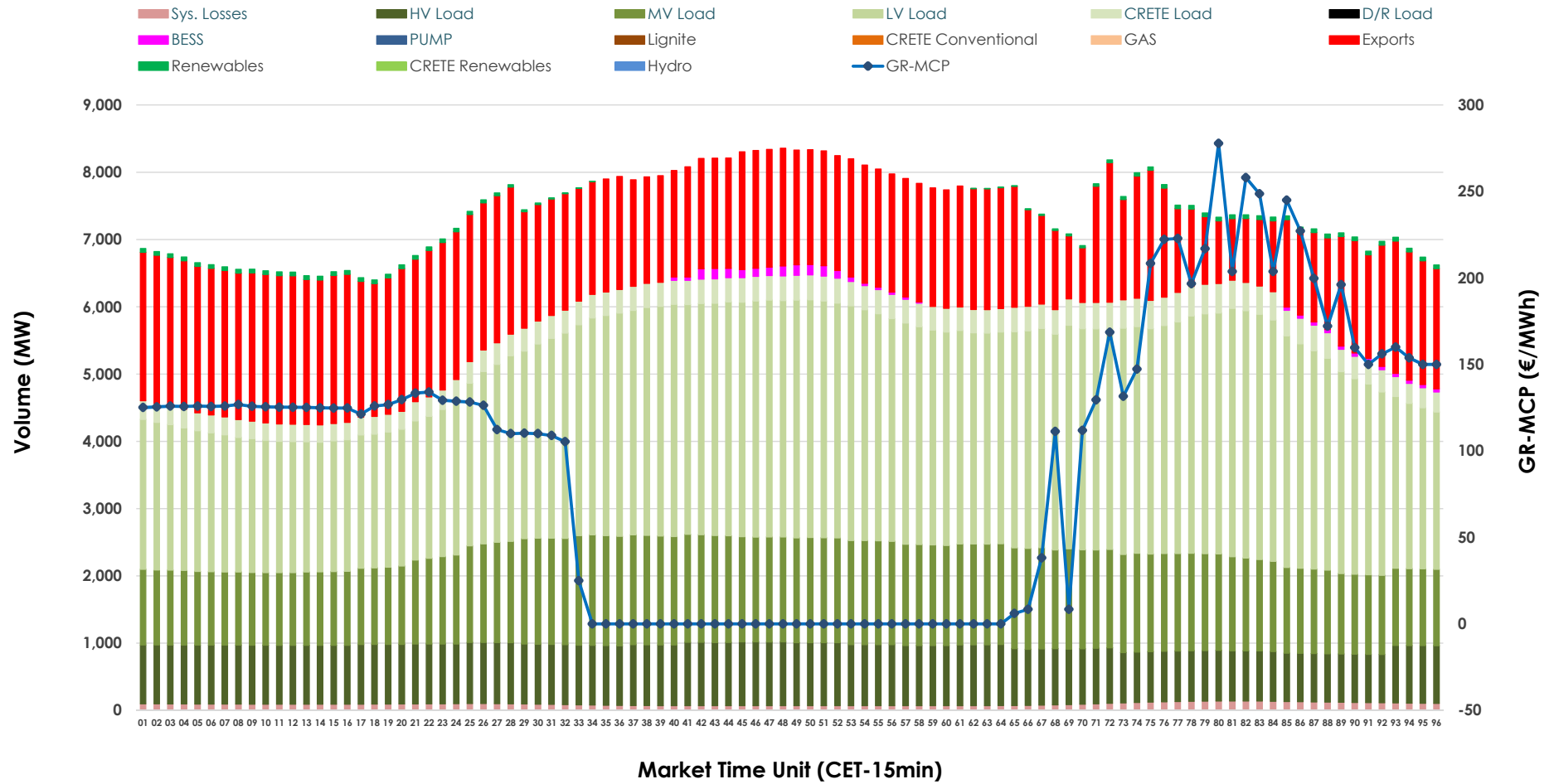


# Day-Ahead Market Outlook

27.05.2026 Day-Ahead Market - Sell



## 27.05.2026 Day-Ahead Market - Buy



### GR Bidding Zone Weekly Figures

Delivery Day	21.05	22.05	23.05	24.05	25.05	26.05	27.05
	↑ 35%	↔ 2%	↓ -22%	↓ -16%	↔ 22%	↔ 15%	↔ 13%
<b>Avg.MCP (€/MWh)</b>	90.99	92.38	71.90	60.30	73.44	84.59	95.98
<b>Max.MCP (€/MWh)</b>	227.11	167.36	185.46	169.90	174.16	214.80	277.76
<b>Min.MCP (€/MWh)</b>	-0.01	0.00	-3.23	-6.00	-0.01	-0.01	-0.01
	↓ -2%	↓ -2%	↓ -9%	↓ -3%	↔ 18%	↔ 7%	→ -1%
<b>Tot.Vol(GWh)</b>	330.85	323.31	294.58	286.12	336.26	358.48	355.94

### Trades by Order Type

Delivery Day		21.05	22.05	23.05	24.05	25.05	26.05	27.05	
<b>Ord Price Type</b>		<b>Sell &amp; Buy Trades in (GWh) per Price Type</b>							<b>(%)</b>
<b>PPT</b>	(S)	63.567	68.690	66.527	72.052	76.606	78.984	68.767	38.64%
<b>HBD</b>	(S)	73.459	68.593	61.509	53.769	70.070	75.012	77.269	43.42%
<b>BLK</b>	(S)	28.387	24.372	18.721	16.875	21.452	25.245	31.936	17.94%
<b>CPL</b>	(S)	0.012	0.000	0.534	0.365	0.000	0.000	0.000	0.00%
<b>PPT</b>	(B)	14.705	14.085	13.748	13.038	16.106	15.384	15.153	8.51%
<b>HBD</b>	(B)	125.382	123.619	115.047	109.432	124.416	132.398	133.694	75.12%
<b>BLK</b>	(B)	0.000	0.000	0.000	0.000	0.000	0.000	0.000	0.00%
<b>CPL</b>	(B)	25.339	23.951	18.496	20.590	27.606	31.459	29.124	16.36%
		<b>Sell &amp; Buy Orders Traded per Price Type</b>							<b>(%)</b>
<b>PPT</b>	(S)	1687	1803	1757	1768	1693	1809	1828	35.15%
<b>HBD</b>	(S)	3352	3411	3034	2653	2977	3138	3360	64.60%
<b>BLK</b>	(S)	9	9	12	9	11	12	13	0.25%
<b>PPT</b>	(B)	2317	2289	2306	2327	2358	2362	2344	36.55%
<b>HBD</b>	(B)	3855	3934	3851	3799	3699	4095	4069	63.45%
<b>BLK</b>	(B)	0	0	0	0	0	0	0	0.00%

- MCP** Market Clearing Price (€/MWh)
- PPT** Priority Price-Taking
- HBD** Hybrid
- BLK** Block
- CPL** Market Coupling Flow

### Trade's Volume Mix

		Sell - MWh	Buy - MWh	
<b>Lignite</b>	(4.8%)	8,543	0	(0.0%)
<b>Crete Conv.</b>	(0.0%)	0	0	(0.0%)
<b>Gas</b>	(30.9%)	55,063	0	(0.0%)
<b>Hydro</b>	(8.5%)	15,114	0	(0.0%)
<b>Imports</b>	(2.5%)	4,452		
<b>RES</b>	(52.4%)	93,292	753	(0.4%)
<b>Crete RES</b>	(0.5%)	934	0	(0.0%)
<b>BESS</b>	(0.3%)	573	608	(0.3%)
<b>HV Load</b>	(0.0%)	0	20,608	(11.6%)
<b>MV Load</b>	(0.0%)	0	33,209	(18.7%)
<b>LV Load</b>	(0.0%)	0	70,357	(39.5%)
<b>Crete Load</b>	(0.0%)	0	8,189	(4.6%)
<b>Pumping</b>	(0.0%)	0	0	(0.0%)
<b>Exports</b>			41,994	(23.6%)
<b>Sys.Losses</b>	(0.0%)	0	2,254	(1.3%)
<b>D/R Load</b>	(0.0%)	0	0	(0.0%)

