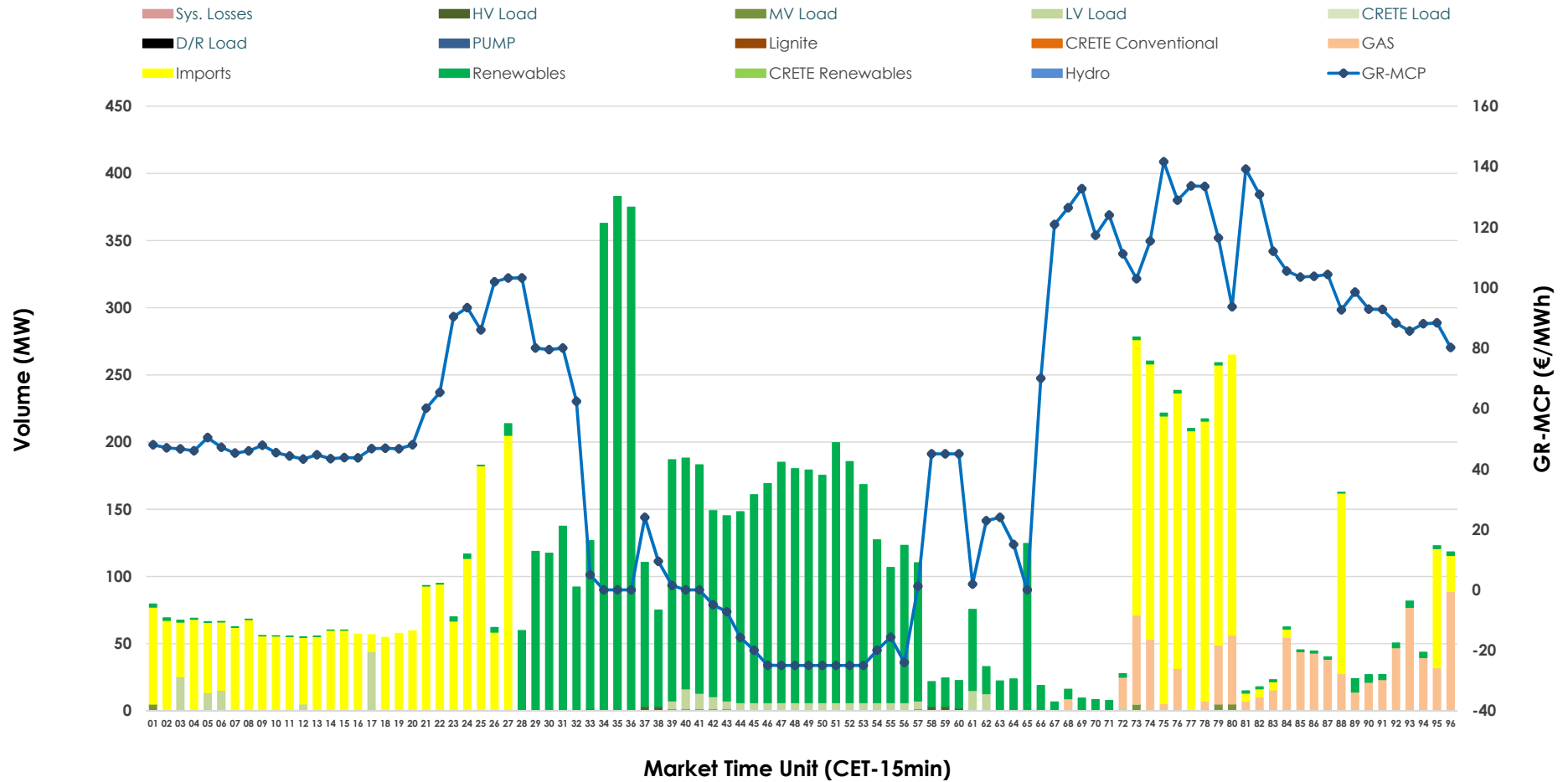


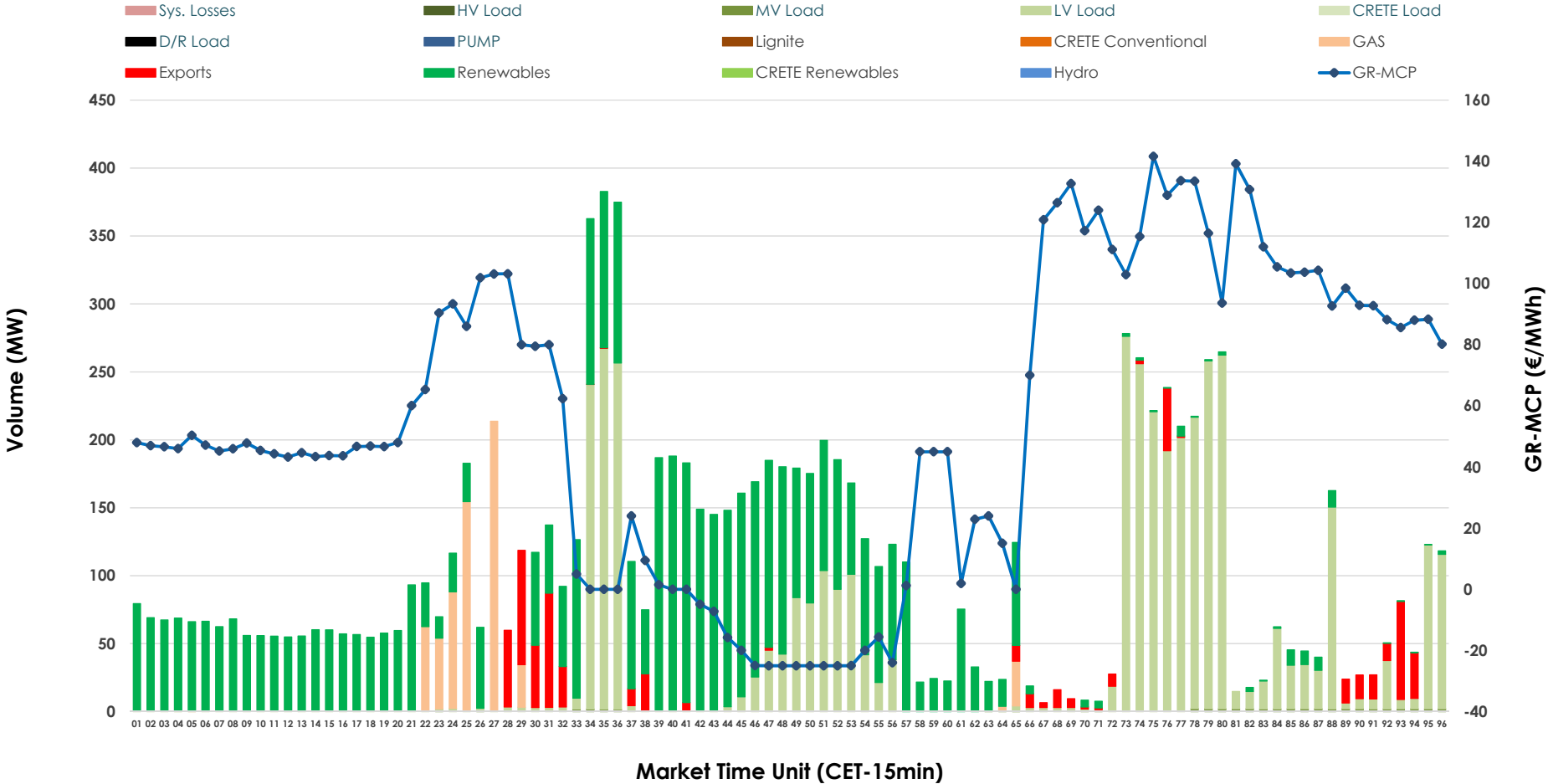


# IDA '2' Market Outlook

23.02.2026 IDA '2' Market - Sell



### 23.02.2026 IDA '2' Market - Buy



### GR Bidding Zone Weekly Figures

Delivery Day	17.02	18.02	19.02	20.02	21.02	22.02	23.02
	👉 -1%	👉 -19%	👈 24%	👈 4%	👉 -15%	👇 -39%	👈 54%
<b>Avg.MCP (€/MWh)</b>	65.25	53.06	66.00	68.42	58.00	35.43	54.51
<b>Max.MCP (€/MWh)</b>	156.64	178.32	170.80	138.20	106.11	105.42	141.61
<b>Min.MCP (€/MWh)</b>	-2.18	-15.00	-25.07	-18.00	-8.01	-15.00	-25.00
	👇 -43%	👈 81%	👇 -51%	👈 45%	👇 -35%	👈 44%	👈 33%
<b>Tot.Vol(GWh)</b>	3.21	5.80	2.86	4.16	2.70	3.90	5.19

### Trades by Order Type

Delivery Day		17.02	18.02	19.02	20.02	21.02	22.02	23.02	
<b>Ord Price Type</b>		<b>Sell &amp; Buy Trades in (GWh) per Price Type</b>							<b>(%)</b>
<b>PPT</b>	(S)	0.000	0.000	0.000	0.000	0.000	0.000	0.000	0.00%
<b>HBD</b>	(S)	0.935	2.201	1.182	1.864	0.992	1.726	1.631	62.78%
<b>BLK</b>	(S)	0.000	0.000	0.000	0.000	0.000	0.000	0.000	0.00%
<b>CPL</b>	(S)	0.671	0.700	0.250	0.218	0.361	0.222	0.967	37.22%
<b>PPT</b>	(B)	0.000	0.000	0.000	0.000	0.000	0.000	0.000	0.00%
<b>HBD</b>	(B)	1.374	2.373	0.948	1.819	1.322	1.654	2.441	93.97%
<b>BLK</b>	(B)	0.000	0.000	0.000	0.000	0.000	0.000	0.000	0.00%
<b>CPL</b>	(B)	0.233	0.528	0.483	0.263	0.031	0.294	0.157	6.03%
		<b>Sell &amp; Buy Orders Traded per Price Type</b>							<b>(%)</b>
<b>PPT</b>	(S)	0	0	0	0	0	0	0	0.00%
<b>HBD</b>	(S)	206	304	172	327	276	137	271	100.00%
<b>BLK</b>	(S)	0	0	0	0	0	0	0	0.00%
<b>PPT</b>	(B)	0	0	0	0	0	0	0	0.00%
<b>HBD</b>	(B)	394	445	370	525	525	528	382	100.00%
<b>BLK</b>	(B)	0	0	0	0	0	0	0	0.00%

**MCP** Market Clearing Price (€/MWh)  
**PPT** Priority Price-Taking  
**HBD** Hybrid  
**BLK** Block  
**CPL** Market Coupling Flow

### Trade's Volume Mix

	Sell - MWh	Buy - MWh	
<b>Lignite</b> (0.0%)	0	0	(0.0%)
<b>Crete Conv.</b> (0.0%)	0	0	(0.0%)
<b>Gas</b> (8.4%)	218	159	(6.1%)
<b>Hydro</b> (0.0%)	0	0	(0.0%)
<b>Imports</b> (37.2%)	967		
<b>RES</b> (51.4%)	1,334	1,255	(48.3%)
<b>Crete RES</b> (0.0%)	0	0	(0.0%)
<b>HV Load</b> (0.2%)	6	0	(0.0%)
<b>MV Load</b> (0.2%)	5	13	(0.5%)
<b>LV Load</b> (2.6%)	67	1,014	(39.1%)
<b>Crete Load</b> (0.0%)	0	0	(0.0%)
<b>Pumping</b> (0.0%)	0	0	(0.0%)
<b>Exports</b>		157	(6.0%)
<b>Sys.Losses</b> (0.0%)	0	0	(0.0%)
<b>D/R Load</b> (0.0%)	0	0	(0.0%)

