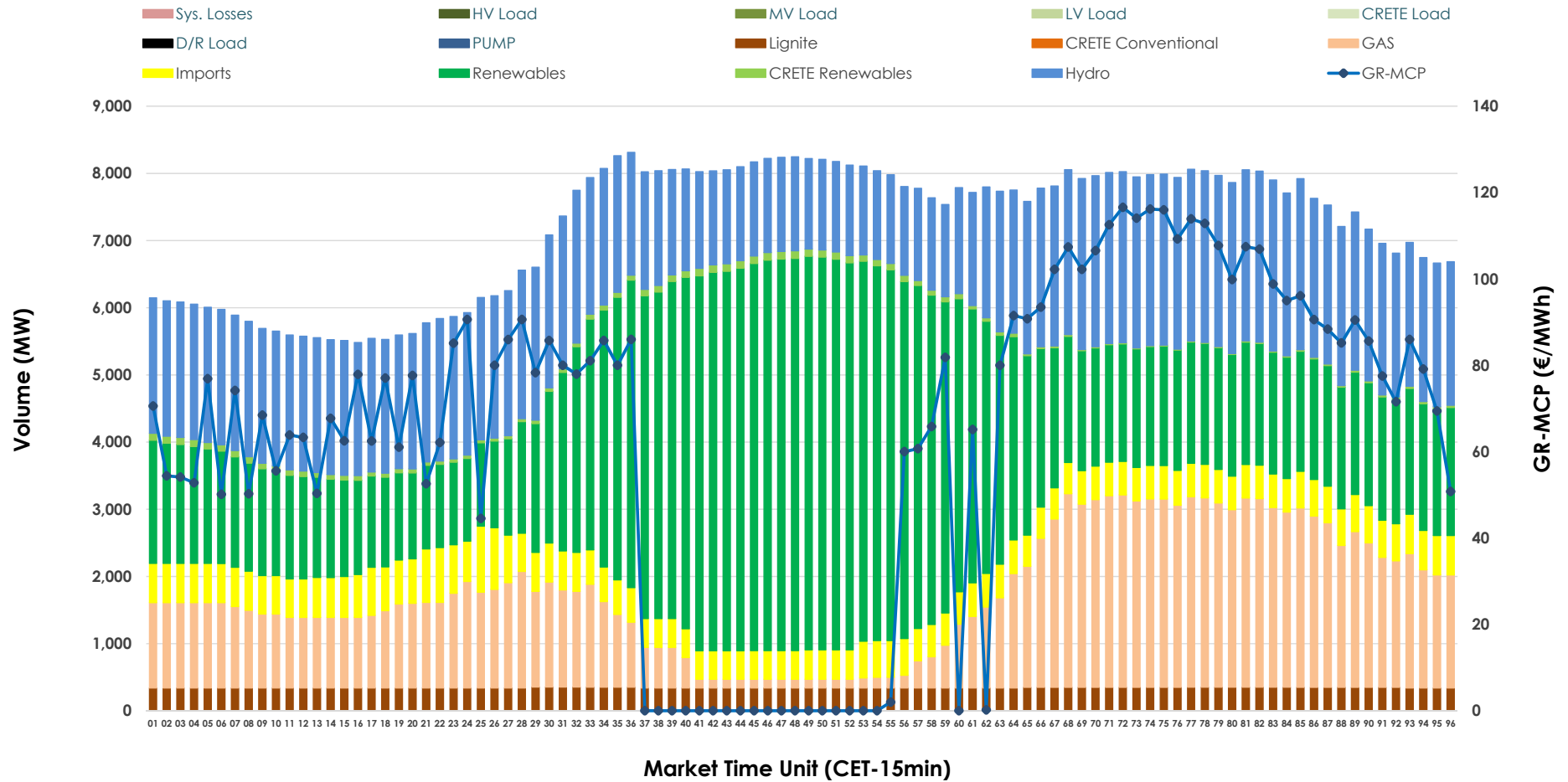


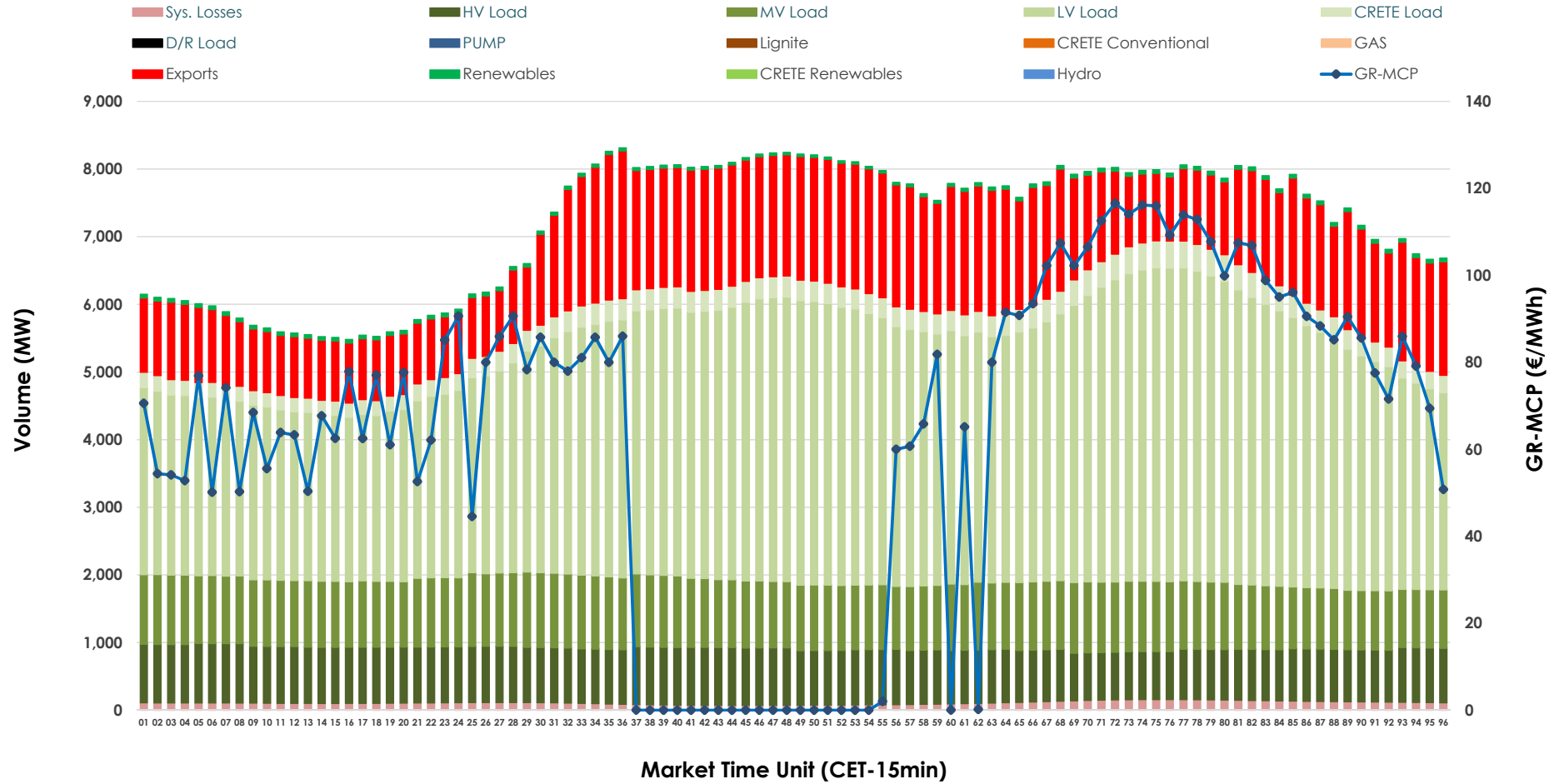


Day-Ahead Market Outlook

21.02.2026 Day-Ahead Market - Sell



21.02.2026 Day-Ahead Market - Buy



GR Bidding Zone Weekly Figures

Delivery Day	15.02	16.02	17.02	18.02	19.02	20.02	21.02
	↓ -59%	↑ 166%	↘ -20%	↘ -10%	↑ 39%	↘ 2%	↘ -14%
Avg.MCP (€/MWh)	27.10	71.96	57.80	52.05	72.50	74.11	63.81
Max.MCP (€/MWh)	96.30	163.98	152.38	173.32	161.66	132.36	116.58
Min.MCP (€/MWh)	-0.10	0.00	0.00	-1.01	-0.01	0.01	0.01
	↘ -10%	↘ 7%	↘ 9%	→ 0%	↘ -3%	↘ 1%	↘ -14%
Tot.Vol(GWh)	348.20	372.50	405.83	406.30	394.81	400.54	346.45

Trades by Order Type

Delivery Day		15.02	16.02	17.02	18.02	19.02	20.02	21.02	
Ord Price Type		Sell & Buy Trades in (GWh) per Price Type							(%)
PPT	(S)	106.090	101.437	116.187	116.225	114.204	119.604	103.858	59.96%
HBD	(S)	60.657	65.090	67.805	66.379	62.963	64.312	52.022	30.03%
BLK	(S)	7.351	19.722	14.780	20.466	19.776	16.349	16.689	9.63%
CPL	(S)	0.000	0.000	4.142	0.078	0.464	0.003	0.657	0.38%
PPT	(B)	13.254	14.176	12.318	13.438	12.892	13.052	12.898	7.45%
HBD	(B)	127.444	137.125	153.387	151.624	151.249	150.625	136.433	78.76%
BLK	(B)	0.000	0.000	0.000	0.000	0.000	0.000	0.000	0.00%
CPL	(B)	33.399	34.948	37.209	38.086	33.266	36.591	23.895	13.79%
		Sell & Buy Orders Traded per Price Type							(%)
PPT	(S)	2169	2324	2508	2477	2482	2516	2504	48.18%
HBD	(S)	2249	2572	2512	2390	2604	2585	2686	51.68%
BLK	(S)	3	10	6	11	11	7	7	0.13%
PPT	(B)	2367	2366	2323	2393	2332	2324	2300	36.69%
HBD	(B)	4372	4040	4233	4317	4024	4076	3968	63.31%
BLK	(B)	0	0	0	0	0	0	0	0.00%

MCP Market Clearing Price (€/MWh)
PPT Priority Price-Taking
HBD Hybrid
BLK Block
CPL Market Coupling Flow

Trade's Volume Mix

		Sell - MWh	Buy - MWh	
Lignite	(4.8%)	8,255	0	(0.0%)
Crete Conv.	(0.0%)	0	0	(0.0%)
Gas	(19.7%)	34,198	0	(0.0%)
Hydro	(27.9%)	48,380	0	(0.0%)
Imports	(7.5%)	13,047		
RES	(39.2%)	67,884	1,203	(0.7%)
Crete RES	(0.8%)	1,461	0	(0.0%)
HV Load	(0.0%)	0	19,334	(11.2%)
MV Load	(0.0%)	0	23,864	(13.8%)
LV Load	(0.0%)	0	84,978	(49.1%)
Crete Load	(0.0%)	0	7,155	(4.1%)
Pumping	(0.0%)	0	0	(0.0%)
Exports			34,085	(19.7%)
Sys.Losses	(0.0%)	0	2,606	(1.5%)
D/R Load	(0.0%)	0	0	(0.0%)

