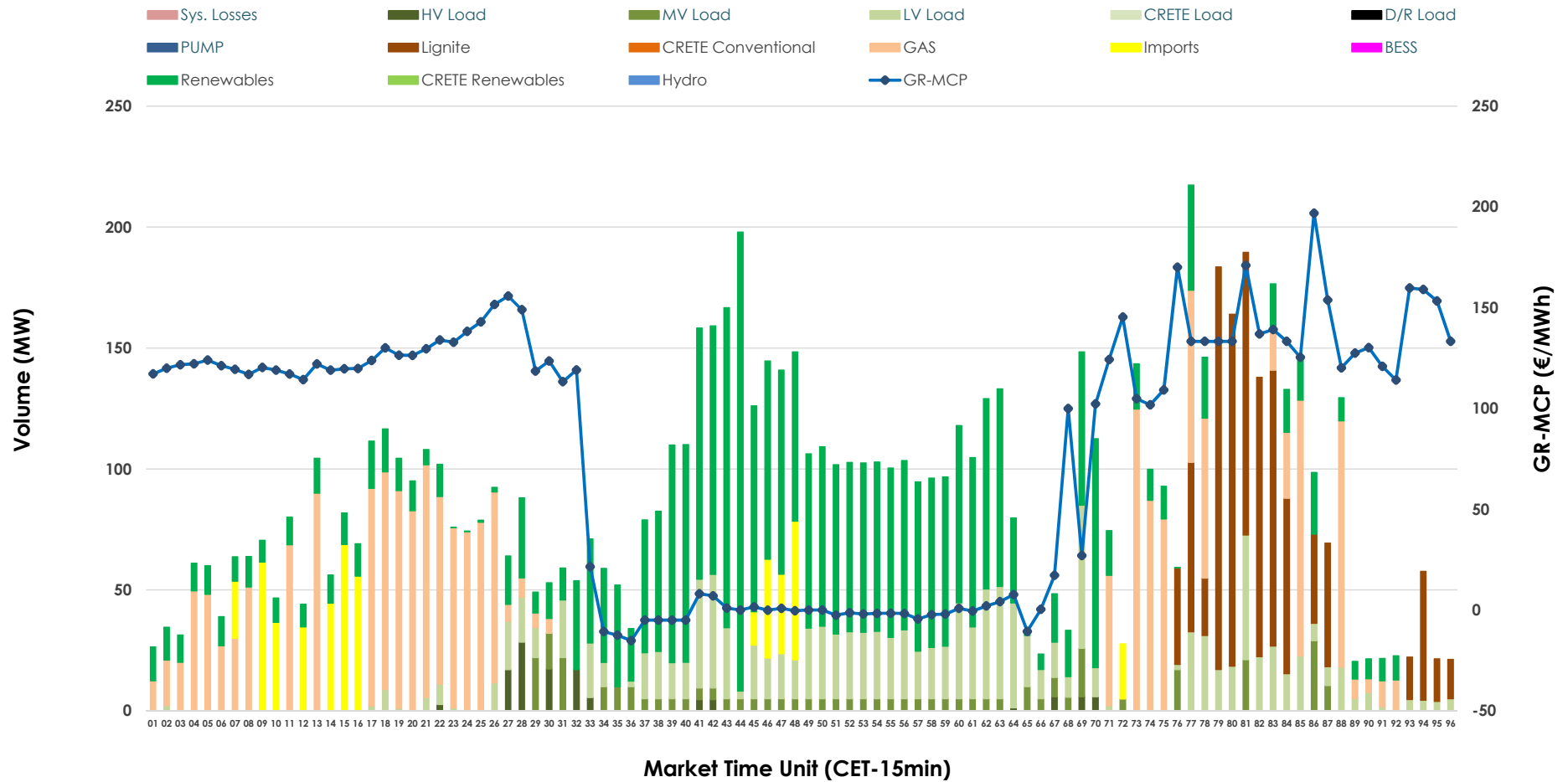


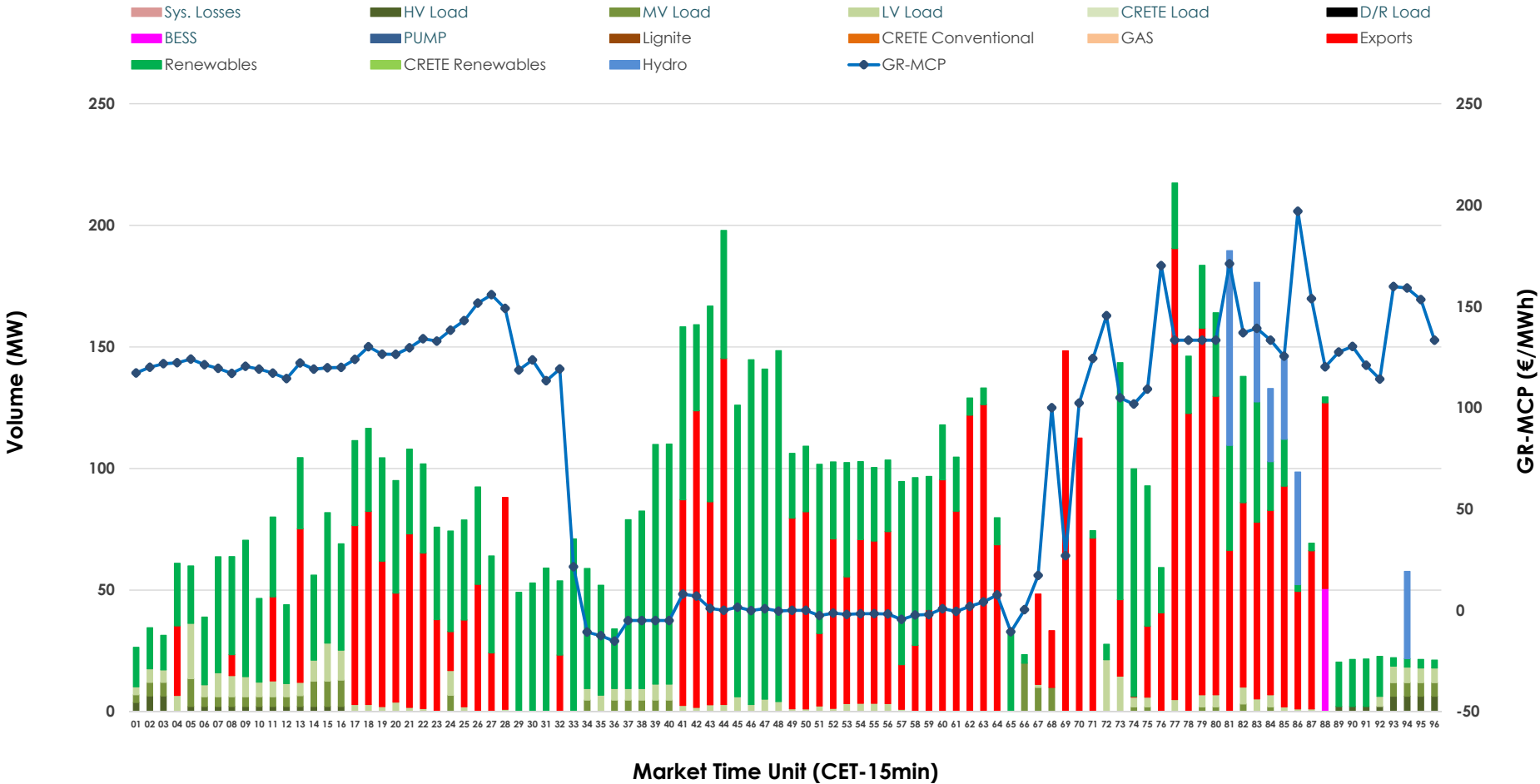


IDA '2' Market Outlook

26.05.2026 IDA '2' Market - Sell



26.05.2026 IDA '2' Market - Buy



GR Bidding Zone Weekly Figures

Delivery Day	20.05	21.05	22.05	23.05	24.05	25.05	26.05
	↓ -46%	↑ 33%	↘ -2%	↘ -26%	↘ -6%	↗ 17%	↗ 11%
Avg.MCP (€/MWh)	69.29	92.33	90.57	66.79	62.57	73.39	81.31
Max.MCP (€/MWh)	203.57	221.99	161.98	175.24	158.00	172.51	196.92
Min.MCP (€/MWh)	-9.37	-10.26	-2.17	-2.04	-7.00	-8.25	-15.17
	↘ -6%	↘ -12%	↘ -6%	↑ 44%	↓ -39%	↗ 31%	↘ -11%
Tot.Vol(GWh)	5.14	4.55	4.28	6.16	3.73	4.89	4.34

Trades by Order Type

Delivery Day		20.05	21.05	22.05	23.05	24.05	25.05	26.05	
Ord Price Type		Sell & Buy Trades in (GWh) per Price Type							(%)
PPT	(S)	0.000	0.000	0.000	0.000	0.000	0.000	0.000	0.00%
HBD	(S)	2.483	1.964	1.614	2.467	1.137	2.126	2.046	94.32%
BLK	(S)	0.000	0.000	0.000	0.000	0.000	0.000	0.000	0.00%
CPL	(S)	0.086	0.309	0.527	0.613	0.730	0.321	0.123	5.68%
PPT	(B)	0.000	0.000	0.000	0.000	0.000	0.000	0.000	0.00%
HBD	(B)	1.762	1.744	1.739	2.289	1.729	1.255	1.174	54.11%
BLK	(B)	0.000	0.000	0.000	0.000	0.000	0.000	0.000	0.00%
CPL	(B)	0.807	0.529	0.402	0.791	0.138	1.192	0.995	45.89%
		Sell & Buy Orders Traded per Price Type							(%)
PPT	(S)	0	0	0	0	0	0	0	0.00%
HBD	(S)	332	268	311	226	176	303	282	100.00%
BLK	(S)	0	0	0	0	0	0	0	0.00%
PPT	(B)	0	0	0	0	0	0	0	0.00%
HBD	(B)	544	413	417	543	406	632	354	100.00%
BLK	(B)	0	0	0	0	0	0	0	0.00%

- MCP** Market Clearing Price (€/MWh)
- PPT** Priority Price-Taking
- HBD** Hybrid
- BLK** Block
- CPL** Market Coupling Flow

Trade's Volume Mix

	Sell - MWh	Buy - MWh	
Lignite (12.2%)	264	0	(0.0%)
Crete Conv. (0.0%)	0	0	(0.0%)
Gas (23.6%)	511	0	(0.0%)
Hydro (0.0%)	0	69	(3.2%)
Imports (5.7%)	123		
RES (37.7%)	817	931	(42.9%)
Crete RES (0.0%)	0	0	(0.0%)
BESS (0.0%)	0	13	(0.6%)
HV Load (1.3%)	29	19	(0.9%)
MV Load (4.1%)	89	50	(2.3%)
LV Load (15.5%)	336	91	(4.2%)
Crete Load (0.0%)	0	0	(0.0%)
Pumping (0.0%)	0	0	(0.0%)
Exports		995	(45.9%)
Sys.Losses (0.0%)	0	0	(0.0%)
D/R Load (0.0%)	0	0	(0.0%)

