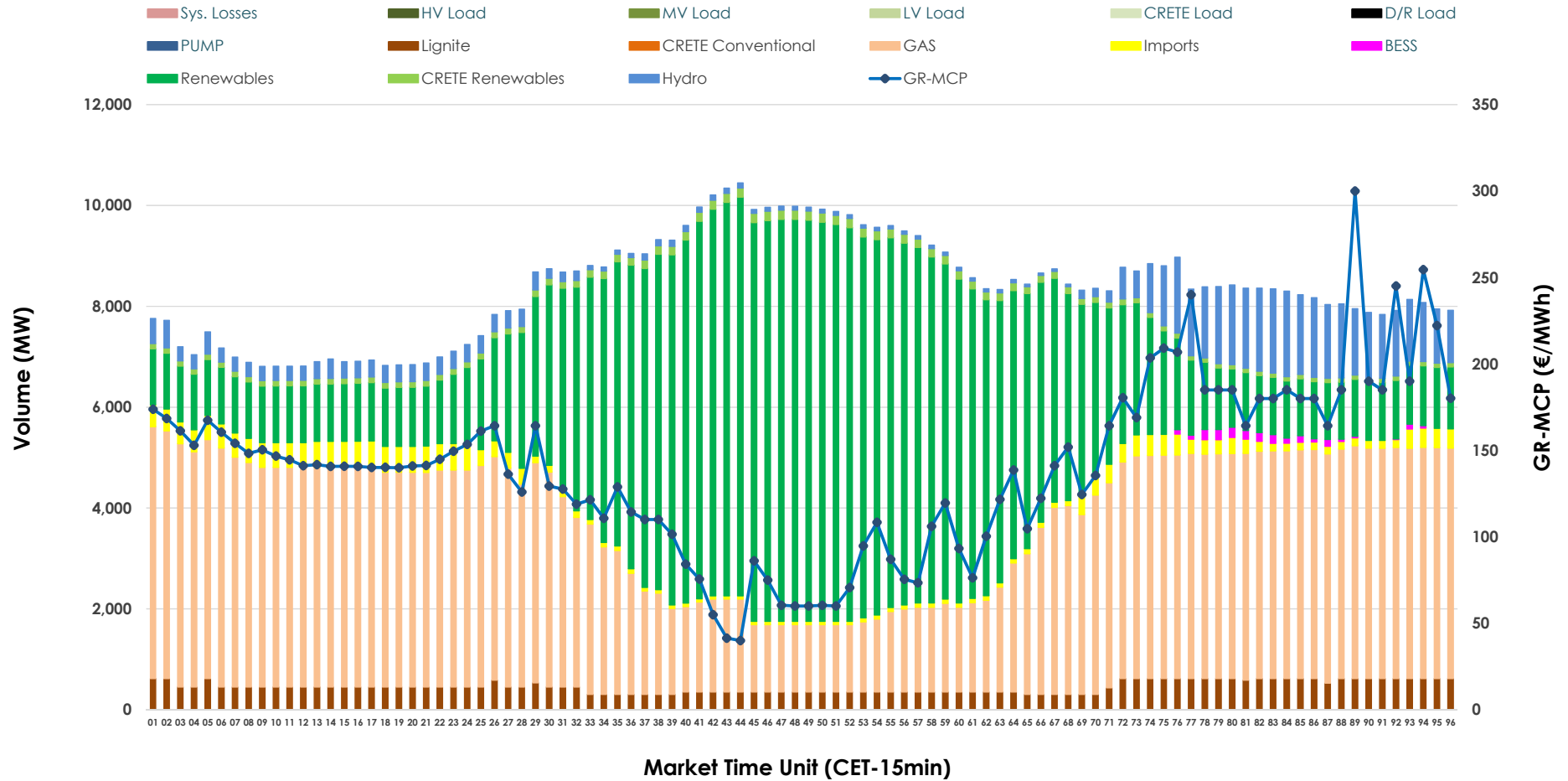


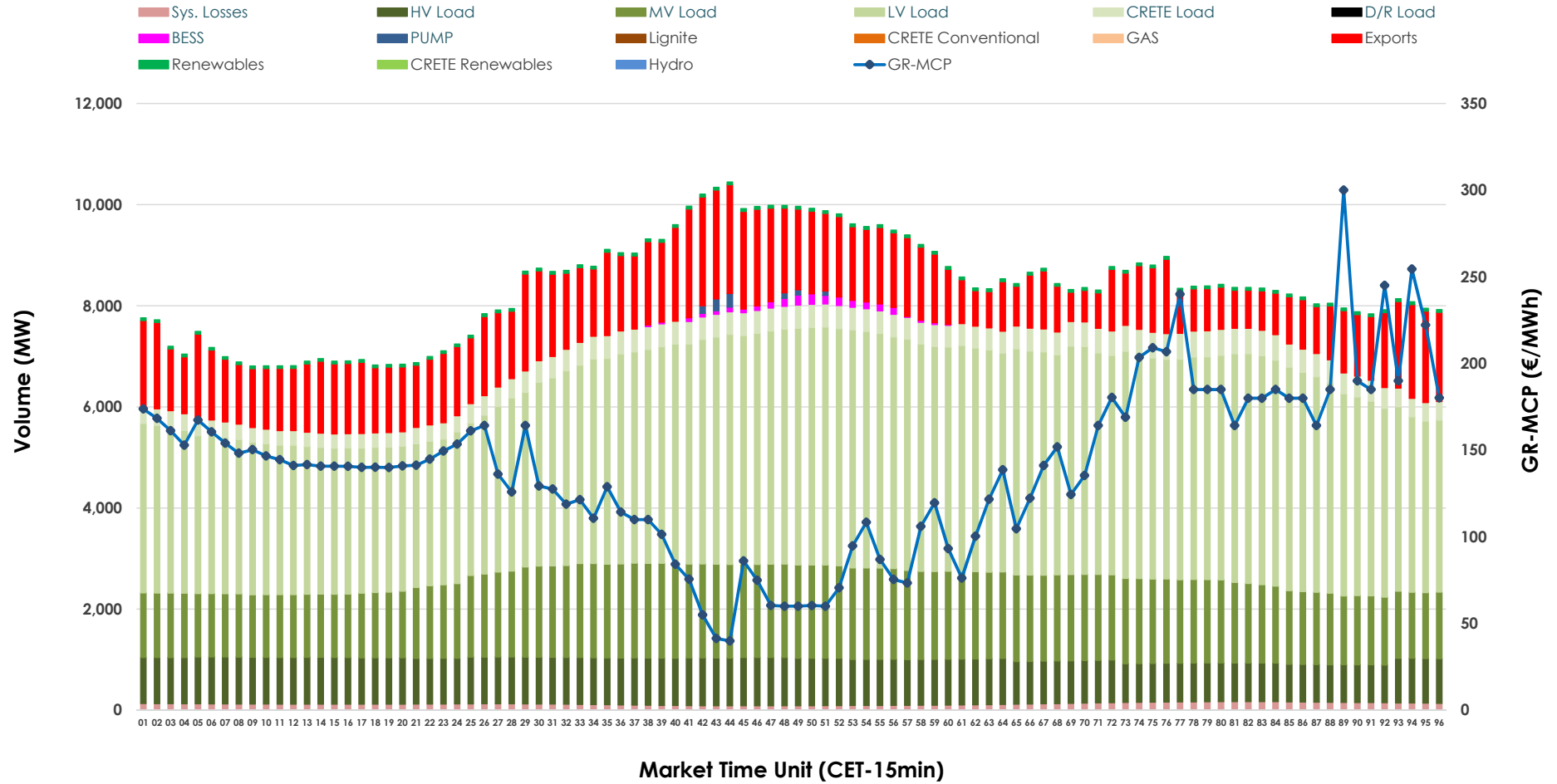


# Day-Ahead Market Outlook

24.06.2026 Day-Ahead Market - Sell



## 24.06.2026 Day-Ahead Market - Buy



### GR Bidding Zone Weekly Figures

Delivery Day	18.06	19.06	20.06	21.06	22.06	23.06	24.06
	↓ -36%	→ 0%	↓ -10%	↓ -1%	↑ 21%	↑ 49%	→ 13%
<b>Avg.MCP (€/MWh)</b>	76.83	76.84	69.40	68.43	82.87	123.69	139.85
<b>Max.MCP (€/MWh)</b>	170.45	150.05	143.77	145.91	191.08	298.03	300.00
<b>Min.MCP (€/MWh)</b>	-0.01	-0.01	-0.02	-1.00	-0.01	0.00	40.00
	→ 15%	→ 1%	↓ -5%	↓ -3%	→ 10%	→ 1%	→ -1%
<b>Tot.Vol(GWh)</b>	391.22	394.14	373.56	360.69	398.29	403.96	401.62

### Trades by Order Type

Delivery Day		18.06	19.06	20.06	21.06	22.06	23.06	24.06	
<b>Ord Price Type</b>		<b>Sell &amp; Buy Trades in (GWh) per Price Type</b>							<b>(%)</b>
<b>PPT</b>	(S)	76.033	82.897	83.379	83.637	81.817	71.841	63.403	31.57%
<b>HBD</b>	(S)	86.738	84.108	75.272	67.229	87.242	90.967	82.325	41.00%
<b>BLK</b>	(S)	32.840	30.010	28.129	29.177	29.167	37.544	52.636	26.21%
<b>CPL</b>	(S)	0.000	0.053	0.000	0.303	0.919	1.628	2.445	1.22%
<b>PPT</b>	(B)	16.742	17.703	17.500	16.256	17.878	17.854	18.089	9.01%
<b>HBD</b>	(B)	152.368	152.606	141.182	132.687	155.517	162.194	160.856	80.10%
<b>BLK</b>	(B)	0.000	0.000	0.000	0.000	0.000	0.000	0.000	0.00%
<b>CPL</b>	(B)	26.501	26.758	28.098	31.403	25.750	21.932	21.864	10.89%
		<b>Sell &amp; Buy Orders Traded per Price Type</b>							<b>(%)</b>
<b>PPT</b>	(S)	1634	1607	1669	1654	1652	1668	1685	29.56%
<b>HBD</b>	(S)	3357	3327	3083	2836	3199	3750	3993	70.04%
<b>BLK</b>	(S)	11	14	15	14	10	16	23	0.40%
<b>PPT</b>	(B)	2371	2411	2407	2448	2443	2432	2392	38.30%
<b>HBD</b>	(B)	3993	4043	4044	3852	4013	3956	3854	61.70%
<b>BLK</b>	(B)	0	0	0	0	0	0	0	0.00%

- MCP** Market Clearing Price (€/MWh)
- PPT** Priority Price-Taking
- HBD** Hybrid
- BLK** Block
- CPL** Market Coupling Flow

### Trade's Volume Mix

		Sell - MWh	Buy - MWh	
<b>Lignite</b>	(5.4%)	10,876	0	(0.0%)
<b>Crete Conv.</b>	(0.0%)	0	0	(0.0%)
<b>Gas</b>	(41.8%)	84,032	0	(0.0%)
<b>Hydro</b>	(5.8%)	11,739	0	(0.0%)
<b>Imports</b>	(3.0%)	6,065		
<b>RES</b>	(42.1%)	84,577	1,296	(0.6%)
<b>Crete RES</b>	(1.5%)	3,031	0	(0.0%)
<b>BESS</b>	(0.2%)	488	555	(0.3%)
<b>HV Load</b>	(0.0%)	0	21,135	(10.5%)
<b>MV Load</b>	(0.0%)	0	38,183	(19.0%)
<b>LV Load</b>	(0.0%)	0	94,298	(47.0%)
<b>Crete Load</b>	(0.0%)	0	9,921	(4.9%)
<b>Pumping</b>	(0.0%)	0	240	(0.1%)
<b>Exports</b>			32,193	(16.0%)
<b>Sys.Losses</b>	(0.0%)	0	2,989	(1.5%)
<b>D/R Load</b>	(0.0%)	0	0	(0.0%)

