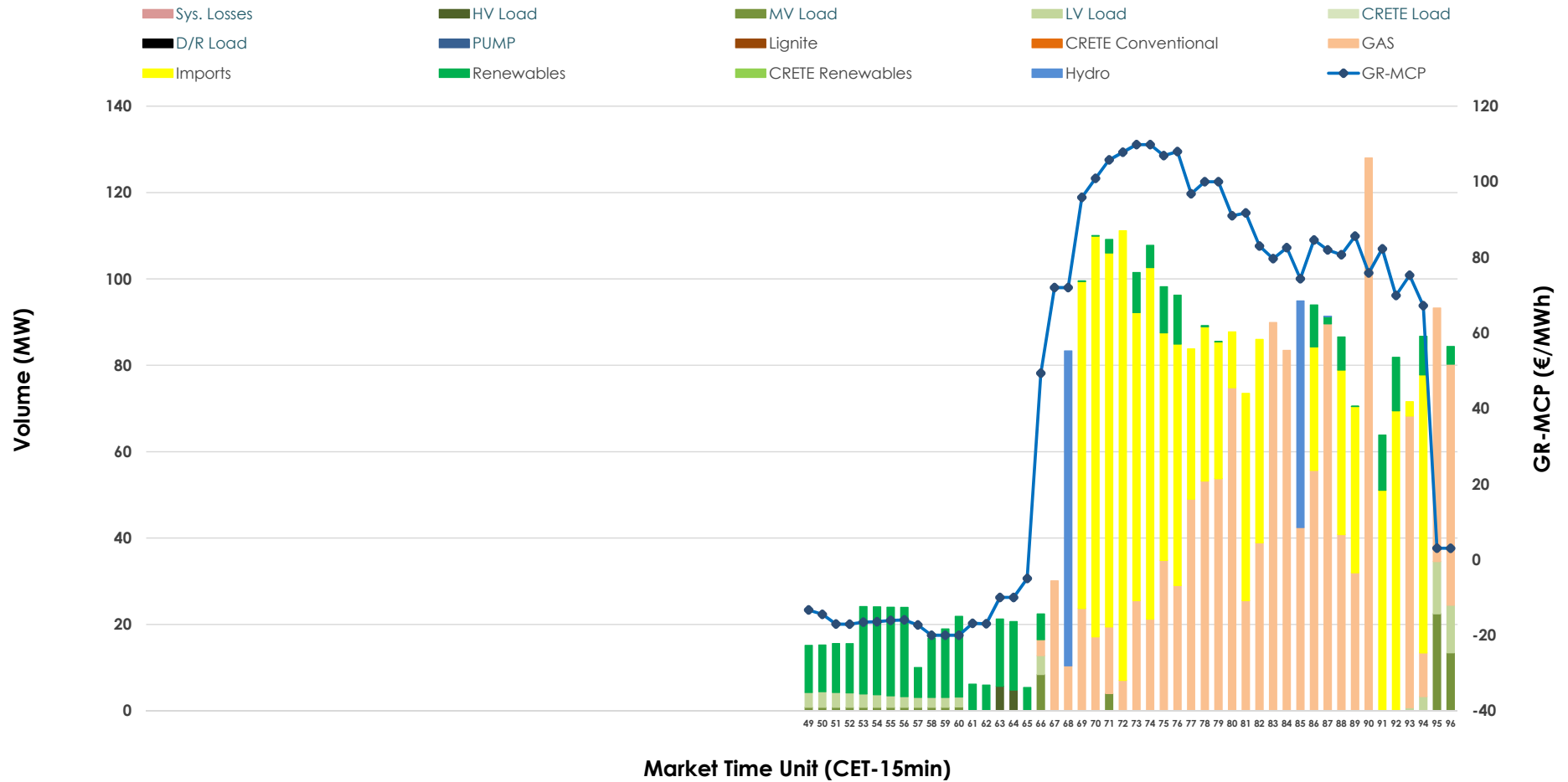


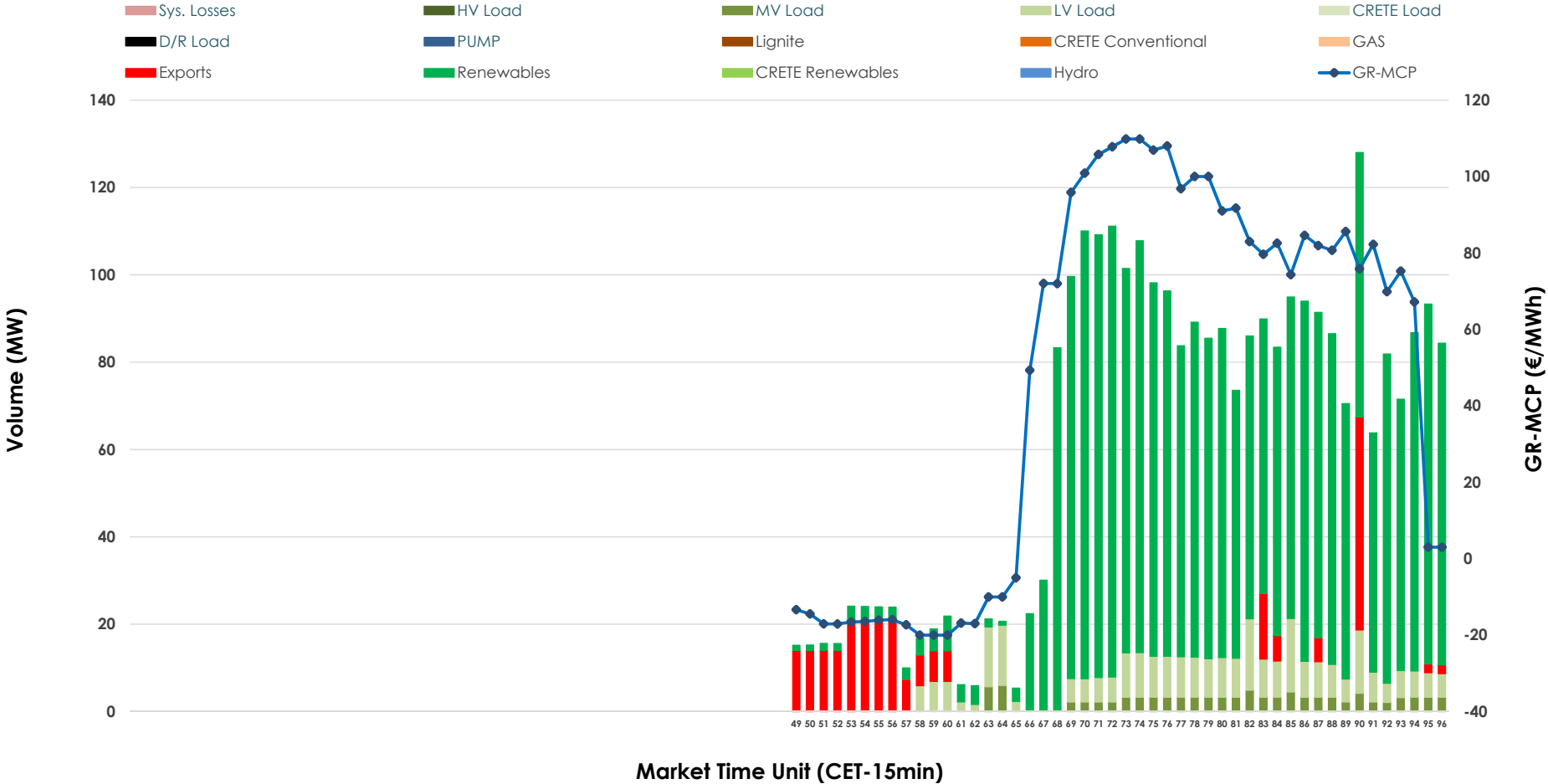


# IDA '3' Market Outlook

22.02.2026 IDA '3' Market - Sell



### 22.02.2026 IDA '3' Market - Buy



### GR Bidding Zone Weekly Figures

Delivery Day	16.02	17.02	18.02	19.02	20.02	21.02	22.02
	↑ 78%	↓ -11%	↓ -1%	↔ 5%	↔ 3%	↔ 0%	↓ -33%
<b>Avg.MCP (€/MWh)</b>	75.28	67.12	66.30	69.73	71.55	71.42	47.58
<b>Max.MCP (€/MWh)</b>	163.98	156.53	183.02	153.38	126.38	112.00	109.84
<b>Min.MCP (€/MWh)</b>	-35.00	-10.00	-29.99	-35.00	-8.73	-19.99	-20.00
	↔ 32%	↓ -28%	↓ -22%	↔ 25%	↔ 4%	↓ -55%	↑ 43%
<b>Tot.Vol(GWh)</b>	3.18	2.27	1.77	2.20	2.30	1.04	1.49

### Trades by Order Type

Delivery Day		16.02	17.02	18.02	19.02	20.02	21.02	22.02	
<b>Ord Price Type</b>		Sell & Buy Trades in (GWh) per Price Type							(%)
<b>PPT</b>	(S)	0.000	0.000	0.000	0.000	0.000	0.000	0.000	0.00%
<b>HBD</b>	(S)	0.768	0.877	0.462	0.312	0.979	0.440	0.465	62.43%
<b>BLK</b>	(S)	0.000	0.000	0.000	0.000	0.000	0.000	0.000	0.00%
<b>CPL</b>	(S)	0.822	0.261	0.421	0.789	0.169	0.082	0.280	37.57%
<b>PPT</b>	(B)	0.000	0.000	0.000	0.000	0.000	0.000	0.000	0.00%
<b>HBD</b>	(B)	1.525	0.889	0.696	0.877	1.098	0.439	0.683	91.71%
<b>BLK</b>	(B)	0.000	0.000	0.000	0.000	0.000	0.000	0.000	0.00%
<b>CPL</b>	(B)	0.064	0.248	0.187	0.224	0.051	0.083	0.062	8.29%
		Sell & Buy Orders Traded per Price Type							(%)
<b>PPT</b>	(S)	0	0	0	0	0	0	0	0.00%
<b>HBD</b>	(S)	181	86	108	76	215	145	109	100.00%
<b>BLK</b>	(S)	0	0	0	0	0	0	0	0.00%
<b>PPT</b>	(B)	0	0	0	0	0	0	0	0.00%
<b>HBD</b>	(B)	330	319	395	226	286	225	269	100.00%
<b>BLK</b>	(B)	0	0	0	0	0	0	0	0.00%

**MCP** Market Clearing Price (€/MWh)  
**PPT** Priority Price-Taking  
**HBD** Hybrid  
**BLK** Block  
**CPL** Market Coupling Flow

### Trade's Volume Mix

		Sell - MWh	Buy - MWh	
<b>Lignite</b>	(0.0%)	0	0	(0.0%)
<b>Crete Conv.</b>	(0.0%)	0	0	(0.0%)
<b>Gas</b>	(42.5%)	317	0	(0.0%)
<b>Hydro</b>	(4.2%)	31	0	(0.0%)
<b>Imports</b>	(37.6%)	280		
<b>RES</b>	(11.2%)	83	586	(78.7%)
<b>Crete RES</b>	(0.0%)	0	0	(0.0%)
<b>HV Load</b>	(0.4%)	3	0	(0.0%)
<b>MV Load</b>	(1.9%)	15	25	(3.4%)
<b>LV Load</b>	(2.2%)	16	72	(9.7%)
<b>Crete Load</b>	(0.0%)	0	0	(0.0%)
<b>Pumping</b>	(0.0%)	0	0	(0.0%)
<b>Exports</b>			62	(8.3%)
<b>Sys.Losses</b>	(0.0%)	0	0	(0.0%)
<b>D/R Load</b>	(0.0%)	0	0	(0.0%)

