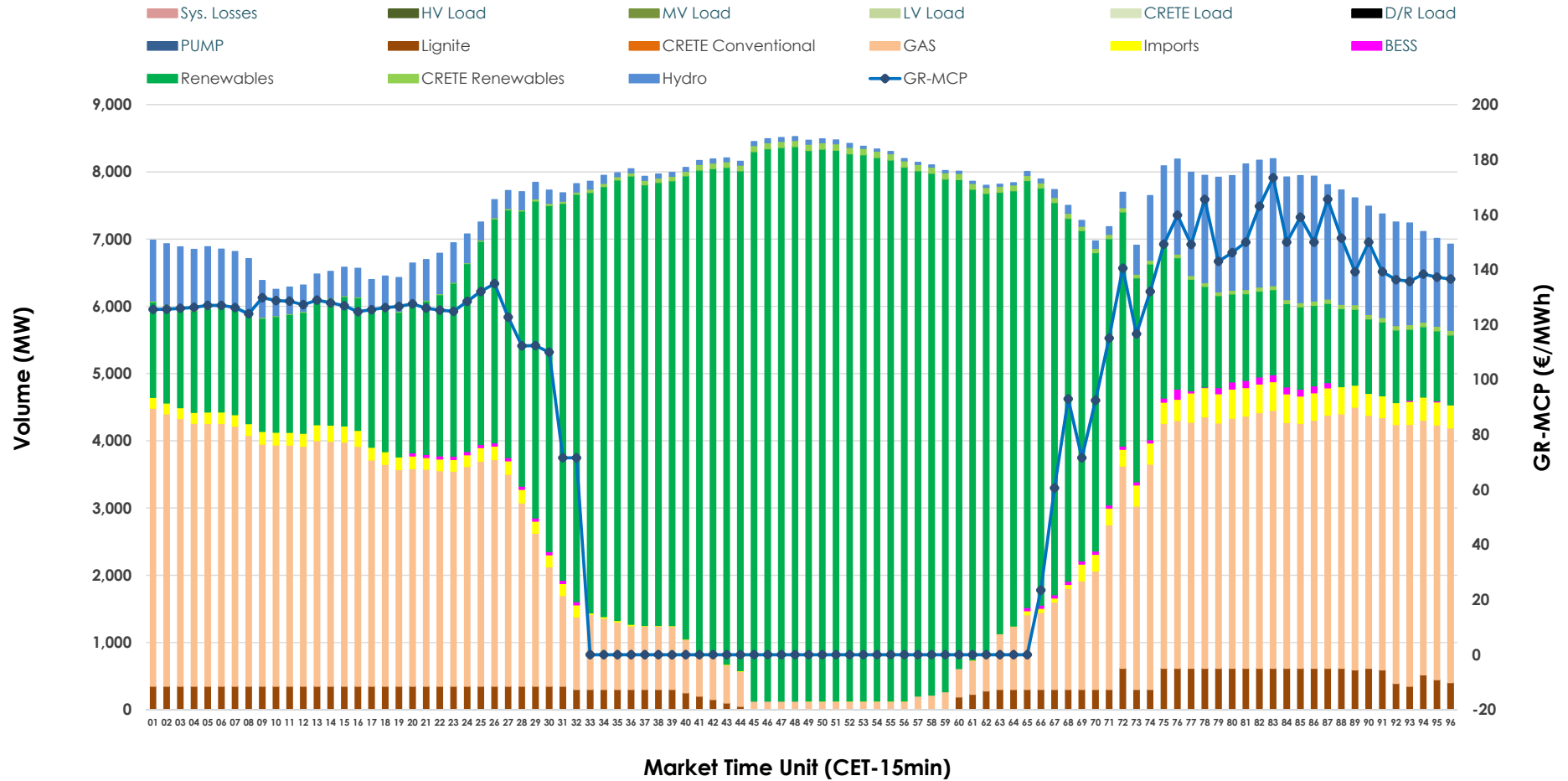


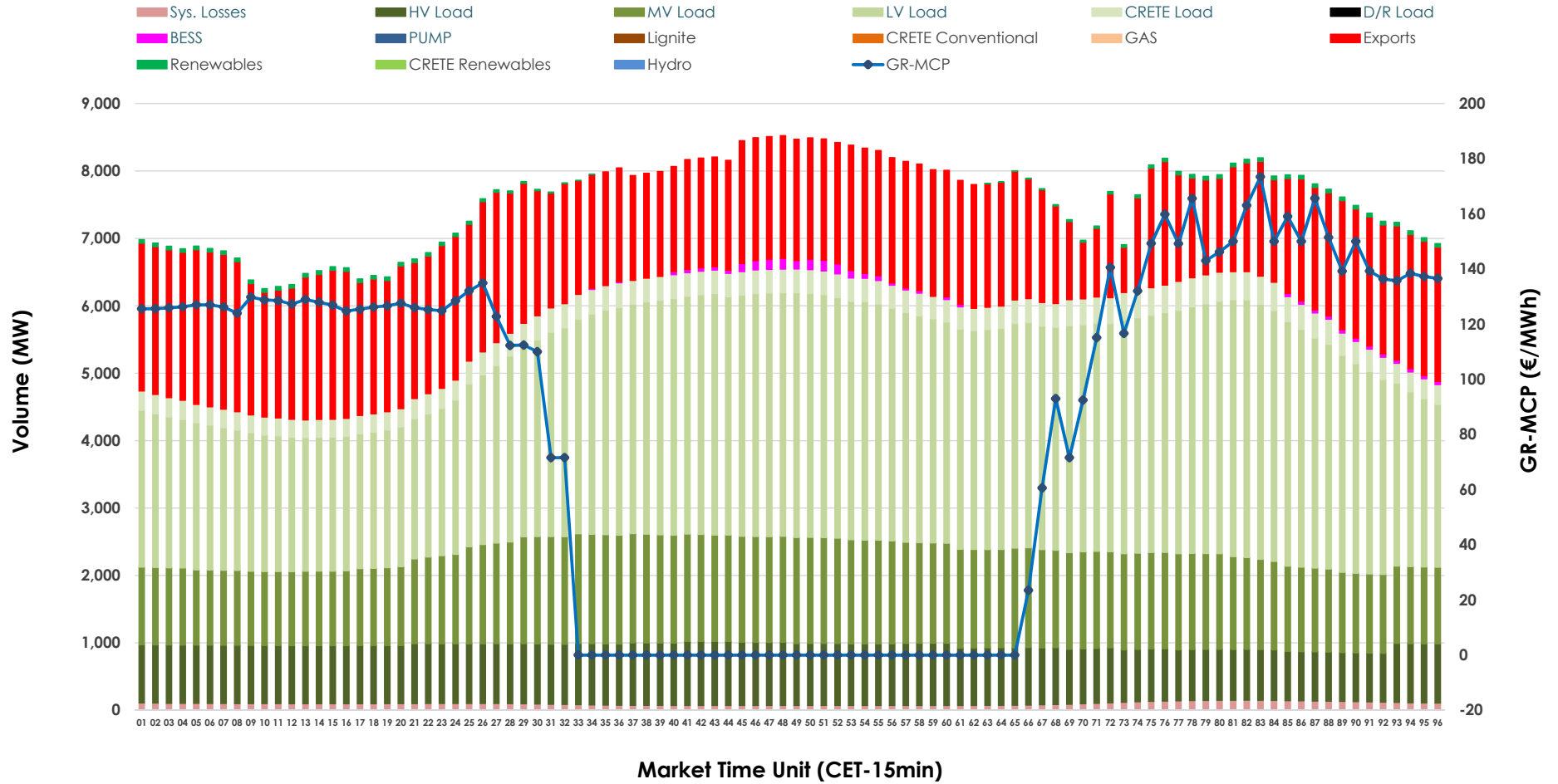


Day-Ahead Market Outlook

29.05.2026 Day-Ahead Market - Sell



29.05.2026 Day-Ahead Market - Buy



GR Bidding Zone Weekly Figures

Delivery Day	23.05	24.05	25.05	26.05	27.05	28.05	29.05
	👇 -22%	👇 -16%	👆 22%	👆 15%	👆 13%	👇 -7%	👇 -7%
Avg.MCP (€/MWh)	71.90	60.30	73.44	84.59	95.98	89.64	83.77
Max.MCP (€/MWh)	185.46	169.90	174.16	214.80	277.76	199.16	173.41
Min.MCP (€/MWh)	-3.23	-6.00	-0.01	-0.01	-0.01	0.00	-0.01
	👇 -9%	👇 -3%	👆 18%	👆 7%	➡ -1%	👇 -2%	👆 4%
Tot.Vol(GWh)	294.58	286.12	336.26	358.48	355.94	348.78	363.45

Trades by Order Type

Delivery Day		23.05	24.05	25.05	26.05	27.05	28.05	29.05	
Ord Price Type		Sell & Buy Trades in (GWh) per Price Type							(%)
PPT	(S)	66.527	72.052	76.606	78.984	68.767	62.856	71.215	39.19%
HBD	(S)	61.509	53.769	70.070	75.012	77.269	78.987	80.425	44.26%
BLK	(S)	18.721	16.875	21.452	25.245	31.936	32.486	30.087	16.56%
CPL	(S)	0.534	0.365	0.000	0.000	0.000	0.063	0.000	0.00%
PPT	(B)	13.748	13.038	16.106	15.384	15.153	15.640	15.607	8.59%
HBD	(B)	115.047	109.432	124.416	132.398	133.694	135.255	136.644	75.19%
BLK	(B)	0.000	0.000	0.000	0.000	0.000	0.000	0.000	0.00%
CPL	(B)	18.496	20.590	27.606	31.459	29.124	23.497	29.476	16.22%
		Sell & Buy Orders Traded per Price Type							(%)
PPT	(S)	1757	1768	1693	1809	1828	1843	1765	34.79%
HBD	(S)	3034	2653	2977	3138	3360	3490	3295	64.95%
BLK	(S)	12	9	11	12	13	13	13	0.26%
PPT	(B)	2306	2327	2358	2362	2344	2370	2354	36.61%
HBD	(B)	3851	3799	3699	4095	4069	3997	4076	63.39%
BLK	(B)	0	0	0	0	0	0	0	0.00%

- MCP** Market Clearing Price (€/MWh)
- PPT** Priority Price-Taking
- HBD** Hybrid
- BLK** Block
- CPL** Market Coupling Flow

Trade's Volume Mix

	Sell - MWh	Buy - MWh	
Lignite (4.3%)	7,798	0	(0.0%)
Crete Conv. (0.0%)	0	0	(0.0%)
Gas (30.8%)	55,900	0	(0.0%)
Hydro (7.7%)	13,912	0	(0.0%)
Imports (2.3%)	4,110		
RES (54.0%)	98,130	741	(0.4%)
Crete RES (0.7%)	1,304	0	(0.0%)
BESS (0.3%)	573	608	(0.3%)
HV Load (0.0%)	0	20,593	(11.3%)
MV Load (0.0%)	0	33,110	(18.2%)
LV Load (0.0%)	0	72,503	(39.9%)
Crete Load (0.0%)	0	8,144	(4.5%)
Pumping (0.0%)	0	0	(0.0%)
Exports		43,698	(24.0%)
Sys.Losses (0.0%)	0	2,330	(1.3%)
D/R Load (0.0%)	0	0	(0.0%)

