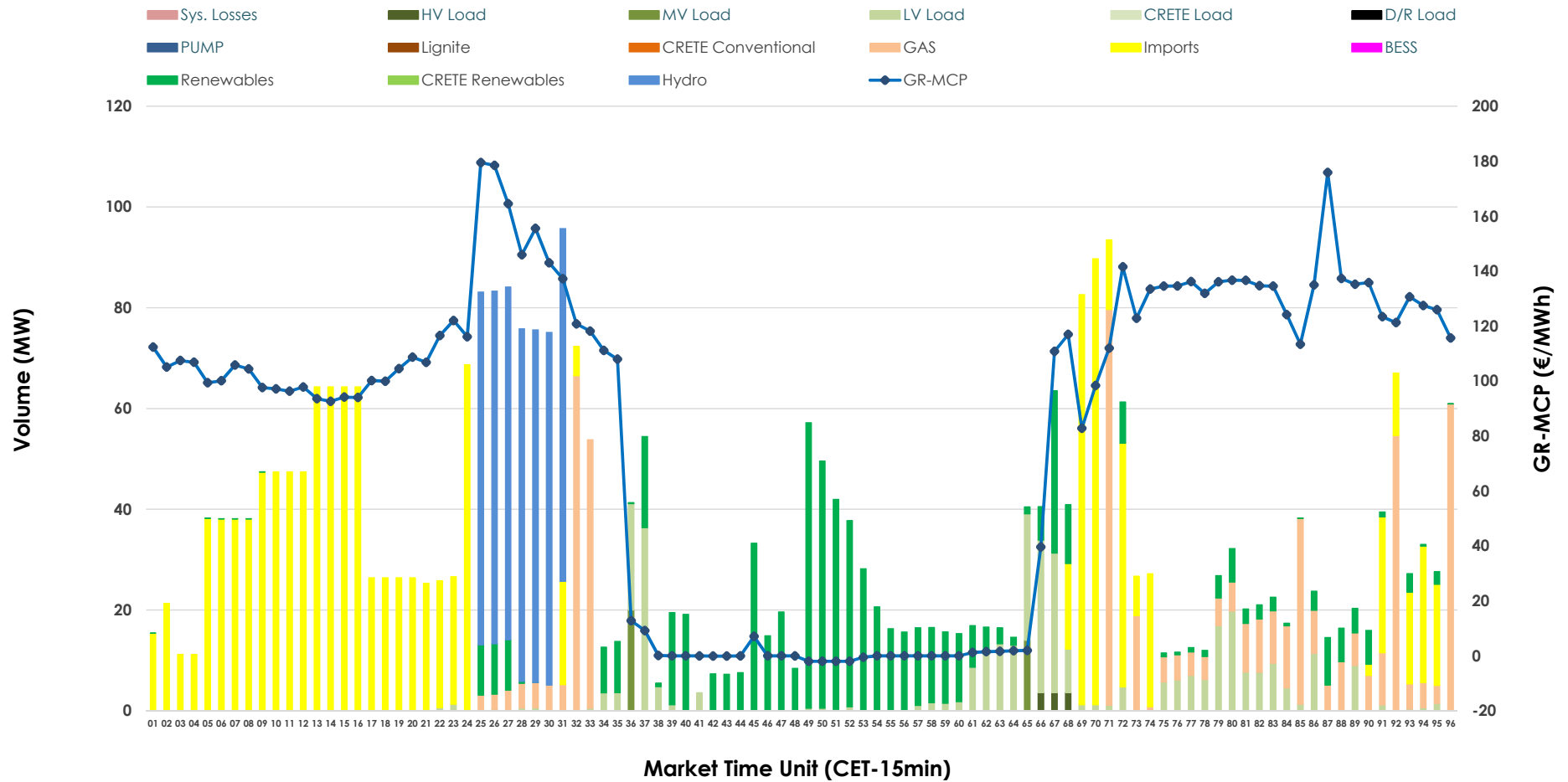


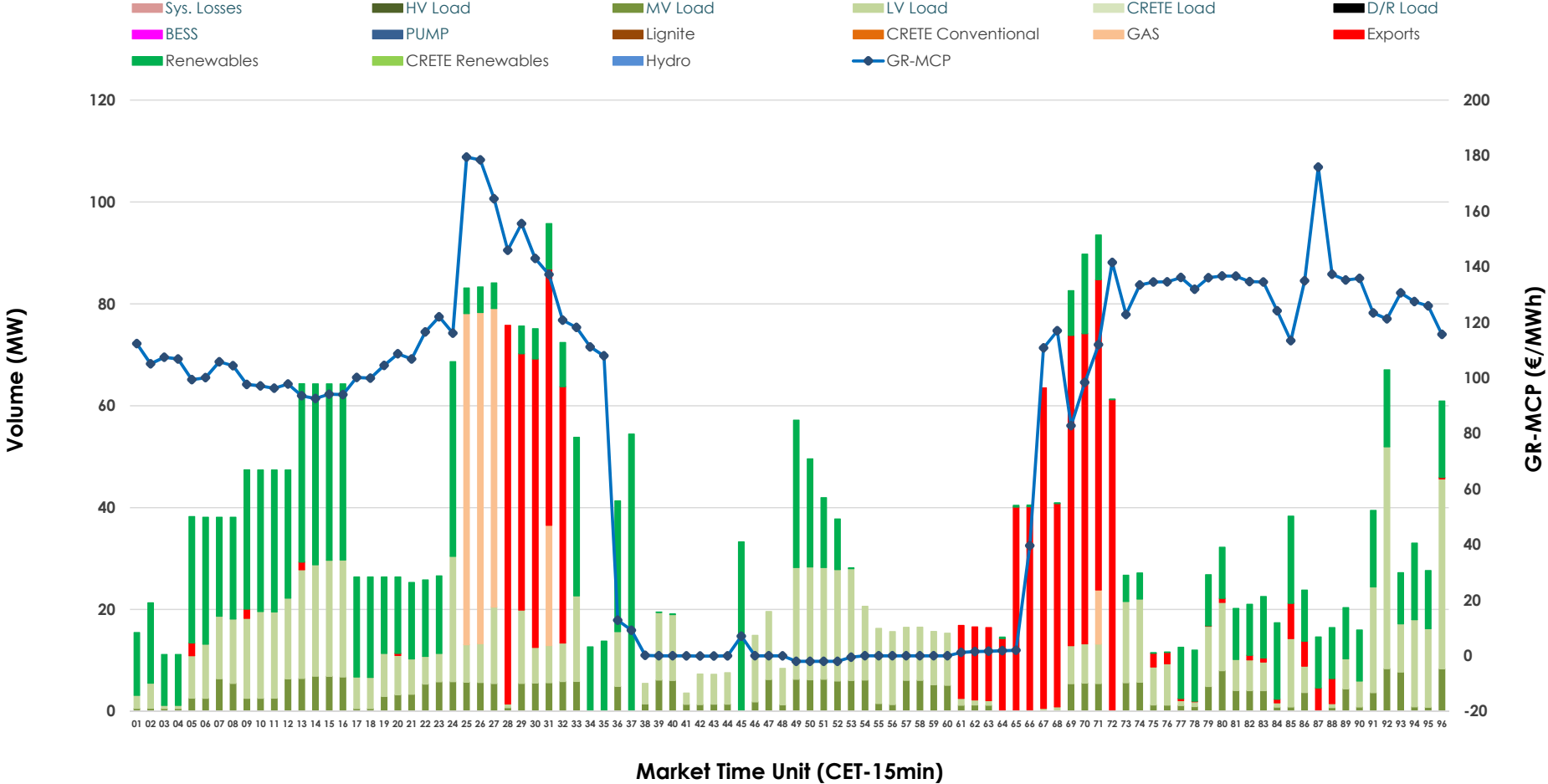


IDA '1' Market Outlook

20.04.2026 IDA '1' Market - Sell



20.04.2026 IDA '1' Market - Buy



GR Bidding Zone Weekly Figures

Delivery Day	14.04	15.04	16.04	17.04	18.04	19.04	20.04
	↑ 50%	↓ -7%			↓ -14%	↔ 13%	↔ 15%
Avg.MCP (€/MWh)	133.10	124.20	N/M	74.62	63.84	72.08	82.77
Max.MCP (€/MWh)	266.00	172.06	N/M	175.68	148.61	174.32	179.47
Min.MCP (€/MWh)	14.48	65.70	N/M	-18.65	-22.01	-10.00	-1.99
	⇒ -1%				↔ 13%	↓ -3%	↓ -55%
Tot.Vol(GWh)	3.26	N/M	N/M	3.45	3.88	3.77	1.71

Trades by Order Type

Delivery Day		14.04	15.04	16.04	17.04	18.04	19.04	20.04	
Ord Price Type		Sell & Buy Trades in (GWh) per Price Type							(%)
PPT	(S)	0.000	0.000		0.000	0.000	0.000	0.000	0.00%
HBD	(S)	1.136	0.000		1.172	1.017	0.797	0.522	61.18%
BLK	(S)	0.000	0.000		0.000	0.000	0.000	0.000	0.00%
CPL	(S)	0.492	0.000		0.554	0.925	1.090	0.331	38.82%
PPT	(B)	0.000	0.000		0.000	0.000	0.000	0.000	0.00%
HBD	(B)	0.771	0.000		1.314	1.399	0.851	0.653	76.50%
BLK	(B)	0.000	0.000		0.000	0.000	0.000	0.000	0.00%
CPL	(B)	0.858	0.000		0.411	0.543	1.036	0.200	23.50%
		Sell & Buy Orders Traded per Price Type							(%)
PPT	(S)	0	0		0	0	0	0	0.00%
HBD	(S)	127	130		211	158	173	148	100.00%
BLK	(S)	0	0		0	0	0	0	0.00%
PPT	(B)	0	0		0	0	0	0	0.00%
HBD	(B)	501	793		634	880	512	538	100.00%
BLK	(B)	0	0		0	0	0	0	0.00%

- MCP** Market Clearing Price (€/MWh)
- PPT** Priority Price-Taking
- HBD** Hybrid
- BLK** Block
- CPL** Market Coupling Flow

Trade's Volume Mix

	Sell - MWh	Buy - MWh	
Lignite (0.0%)	0	0	(0.0%)
Crete Conv. (0.0%)	0	0	(0.0%)
Gas (15.6%)	133	56	(6.5%)
Hydro (14.4%)	123	0	(0.0%)
Imports (38.8%)	331		
RES (19.6%)	167	277	(32.4%)
Crete RES (0.0%)	0	0	(0.0%)
BESS (0.0%)	0	0	(0.0%)
HV Load (0.3%)	3	0	(0.0%)
MV Load (1.0%)	9	83	(9.7%)
LV Load (10.3%)	88	237	(27.8%)
Crete Load (0.0%)	0	0	(0.0%)
Pumping (0.0%)	0	0	(0.0%)
Exports		200	(23.5%)
Sys.Losses (0.0%)	0	0	(0.0%)
D/R Load (0.0%)	0	0	(0.0%)

