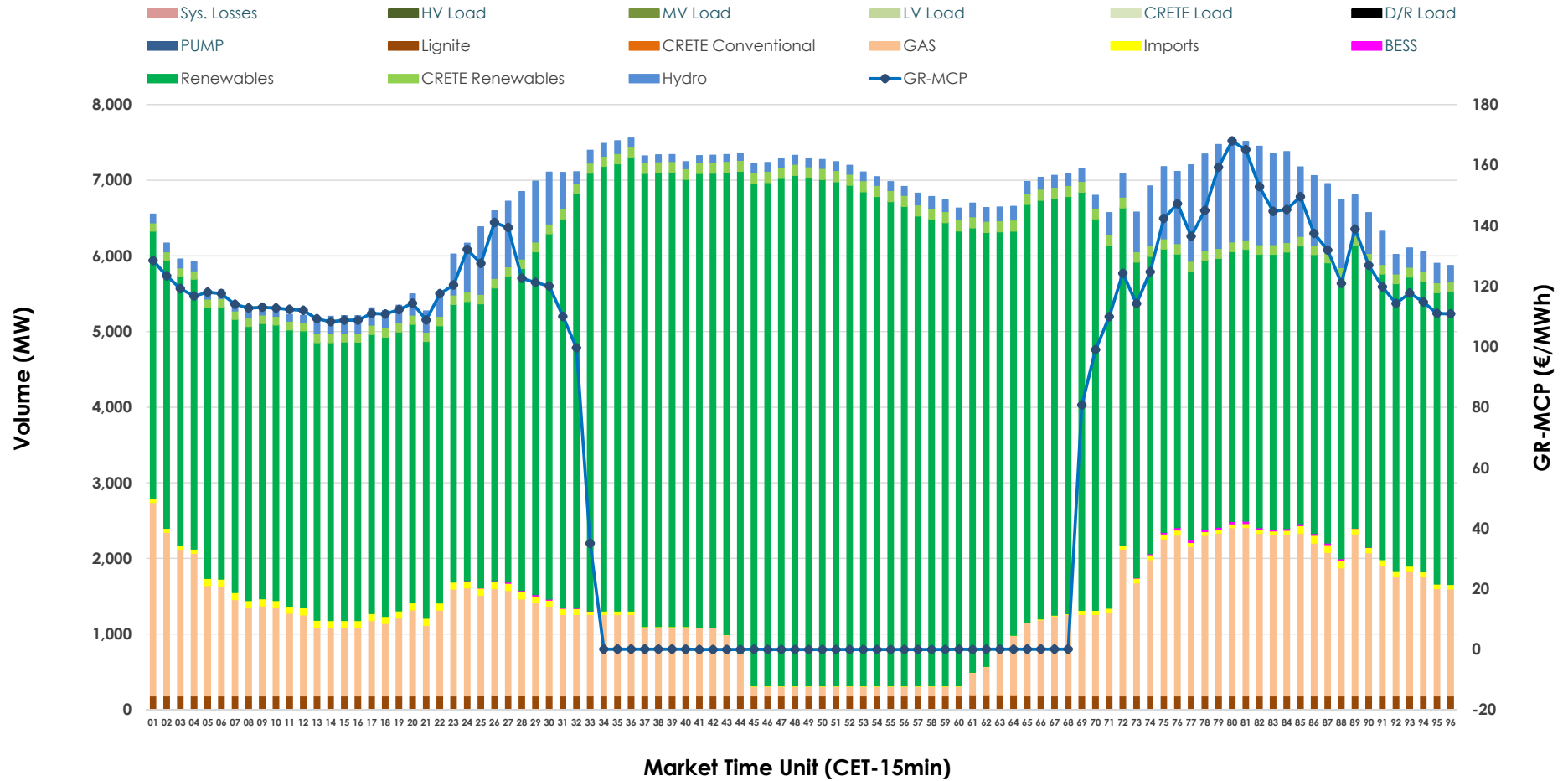


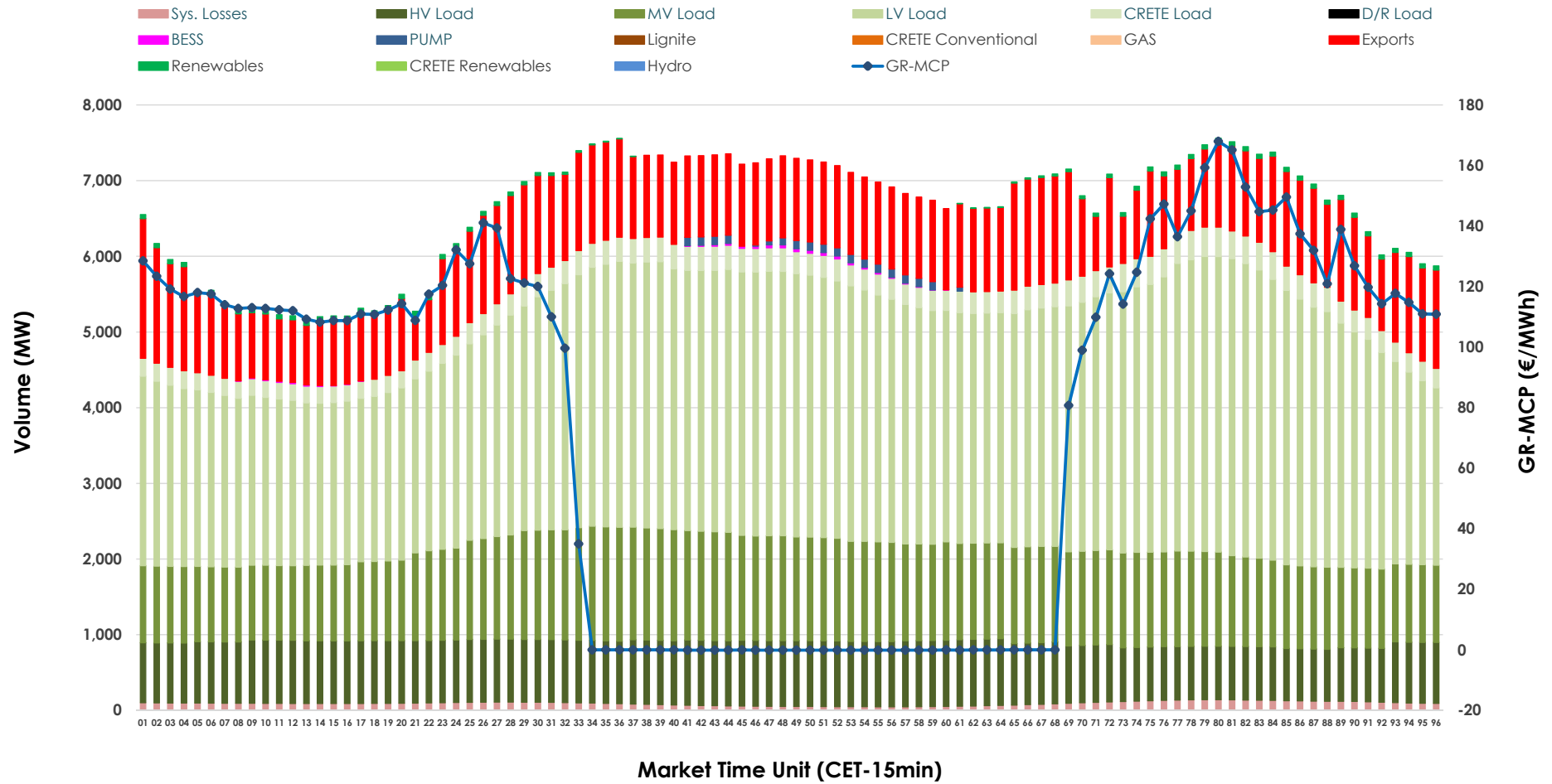


Day-Ahead Market Outlook

17.04.2026 Day-Ahead Market - Sell



17.04.2026 Day-Ahead Market - Buy



GR Bidding Zone Weekly Figures

Delivery Day	11.04	12.04	13.04	14.04	15.04	16.04	17.04
	👇 -8%	👇 -9%	👆 13%	👆 47%	👇 -5%	👇 -27%	👇 -16%
Avg.MCP (€/MWh)	87.39	79.79	90.06	132.81	125.87	91.60	77.40
Max.MCP (€/MWh)	187.36	157.05	167.43	245.16	176.29	214.54	167.98
Min.MCP (€/MWh)	0.00	-0.41	0.00	15.01	64.00	0.00	-0.10
	👇 -16%	👇 -4%	👆 9%	👆 17%	👆 5%	👆 6%	👇 -4%
Tot.Vol(GWh)	245.55	234.70	254.95	298.65	312.79	331.04	318.07

Trades by Order Type

Delivery Day		11.04	12.04	13.04	14.04	15.04	16.04	17.04	
Ord Price Type		Sell & Buy Trades in (GWh) per Price Type							(%)
PPT	(S)	36.771	39.180	44.572	44.451	45.887	64.098	74.510	46.85%
HBD	(S)	51.590	49.183	54.680	66.771	65.234	74.728	66.668	41.92%
BLK	(S)	23.858	17.179	21.227	33.965	35.606	24.879	17.787	11.18%
CPL	(S)	10.557	11.806	6.996	4.140	9.669	1.814	0.070	0.04%
PPT	(B)	13.243	12.221	12.074	12.075	12.730	13.676	12.831	8.07%
HBD	(B)	106.422	96.846	104.111	127.172	133.448	134.083	130.557	82.09%
BLK	(B)	0.000	0.000	0.000	0.000	0.000	0.000	0.000	0.00%
CPL	(B)	3.111	8.282	11.289	10.080	10.218	17.760	15.647	9.84%
		Sell & Buy Orders Traded per Price Type							(%)
PPT	(S)	1463	1465	1461	1495	1488	1493	1585	38.24%
HBD	(S)	2888	2576	2768	3229	3247	2815	2550	61.52%
BLK	(S)	12	12	13	19	16	13	10	0.24%
PPT	(B)	2369	2374	2349	2309	2317	2353	2363	35.87%
HBD	(B)	4083	4193	4291	4088	4131	4190	4224	64.13%
BLK	(B)	0	0	0	0	0	0	0	0.00%

MCP Market Clearing Price (€/MWh)
PPT Priority Price-Taking
HBD Hybrid
BLK Block
CPL Market Coupling Flow

Trade's Volume Mix

		Sell - MWh	Buy - MWh	
Lignite	(2.8%)	4,397	0	(0.0%)
Crete Conv.	(0.0%)	15	0	(0.0%)
Gas	(17.5%)	27,825	0	(0.0%)
Hydro	(5.7%)	8,997	0	(0.0%)
Imports	(0.8%)	1,247		
RES	(71.2%)	113,235	806	(0.5%)
Crete RES	(2.0%)	3,198	0	(0.0%)
BESS	(0.1%)	121	142	(0.1%)
HV Load	(0.0%)	0	19,375	(12.2%)
MV Load	(0.0%)	0	29,455	(18.5%)
LV Load	(0.0%)	0	73,034	(45.9%)
Crete Load	(0.0%)	0	7,008	(4.4%)
Pumping	(0.0%)	0	466	(0.3%)
Exports			26,546	(16.7%)
Sys.Losses	(0.0%)	0	2,204	(1.4%)
D/R Load	(0.0%)	0	0	(0.0%)

