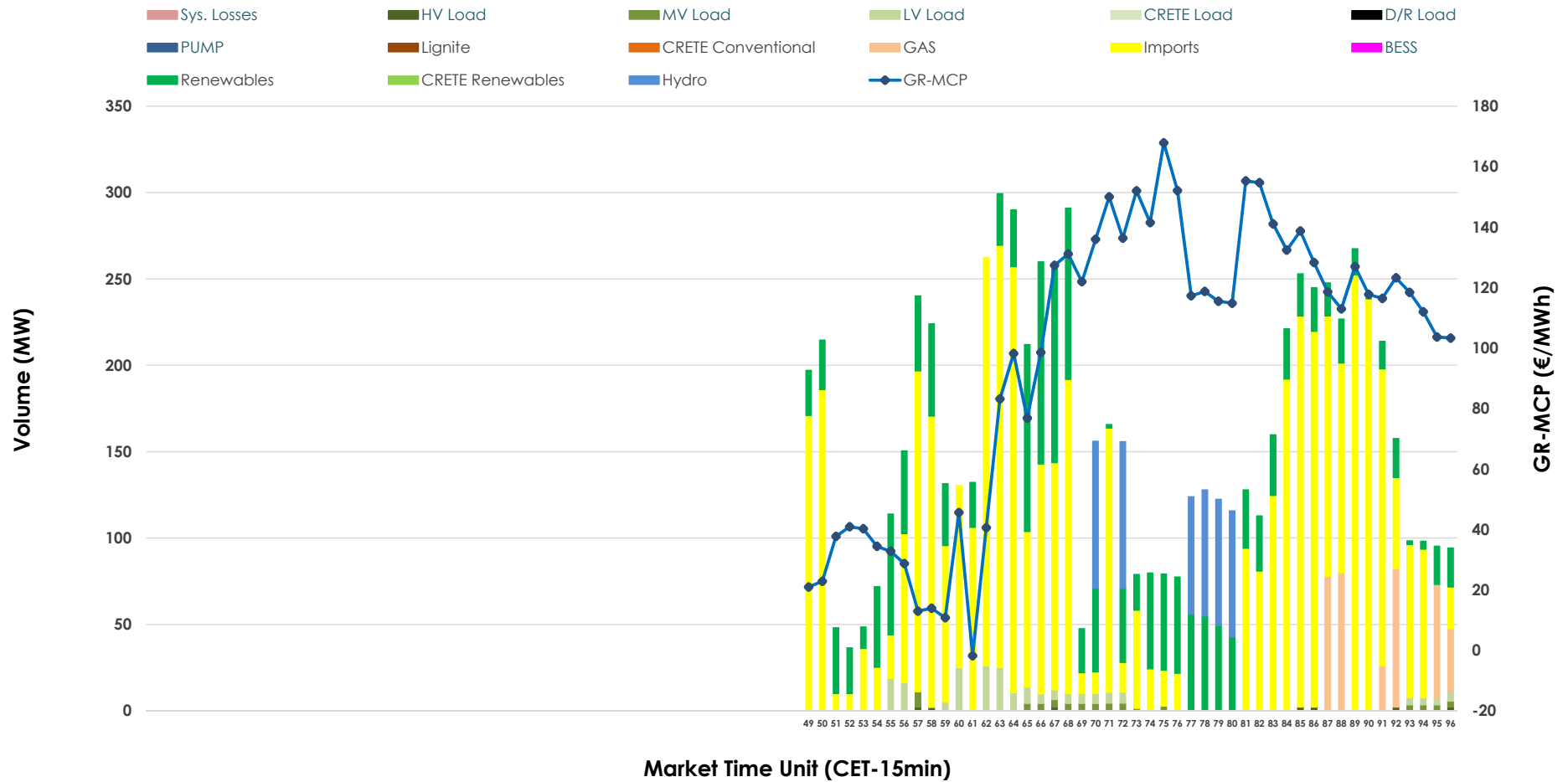


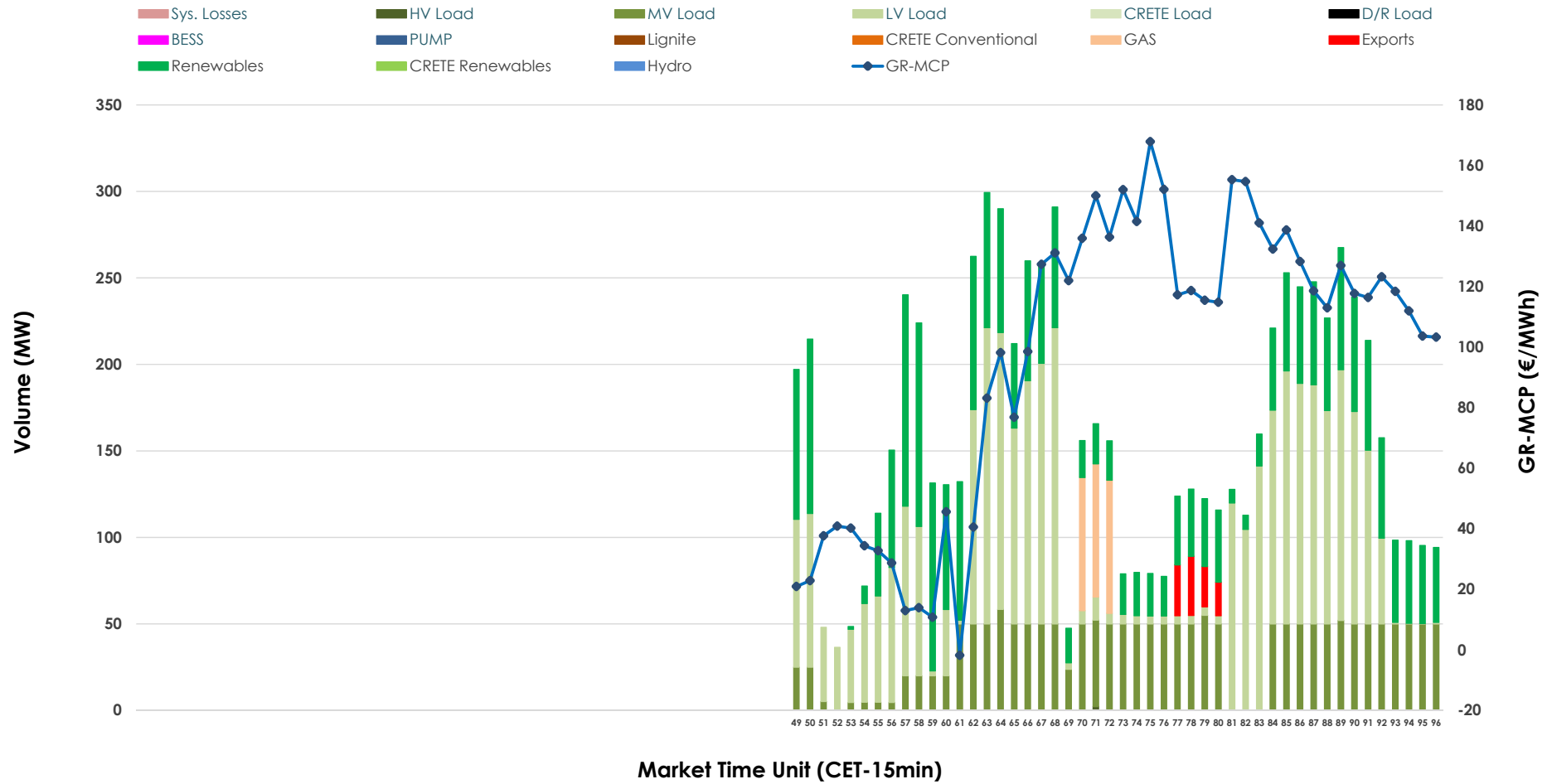


IDA '3' Market Outlook

18.03.2026 IDA '3' Market - Sell



18.03.2026 IDA '3' Market - Buy



GR Bidding Zone Weekly Figures

Delivery Day	12.03	13.03	14.03	15.03	16.03	17.03	18.03
	↗ 5%	↘ -45%	↗ 25%	↘ -6%	↗ 55%	↘ -11%	↘ -17%
Avg.MCP (€/MWh)	129.75	72.01	90.25	84.79	131.09	116.23	96.32
Max.MCP (€/MWh)	266.91	185.96	172.47	154.76	217.49	177.74	167.86
Min.MCP (€/MWh)	-29.99	-17.88	-9.52	-13.13	11.16	68.62	-1.80
	↗ 63%	↗ 17%	↘ -1%	↘ -51%	↗ 99%	↘ -29%	↗ 114%
Tot.Vol(GWh)	2.26	2.65	2.61	1.29	2.57	1.82	3.90

Trades by Order Type

Delivery Day		12.03	13.03	14.03	15.03	16.03	17.03	18.03	
Ord Price Type		Sell & Buy Trades in (GWh) per Price Type							(%)
PPT	(S)	0.000	0.000	0.000	0.000	0.000	0.000	0.000	0.00%
HBD	(S)	1.044	1.304	1.299	0.607	1.094	0.460	0.722	37.03%
BLK	(S)	0.000	0.000	0.000	0.000	0.000	0.000	0.000	0.00%
CPL	(S)	0.086	0.020	0.007	0.038	0.191	0.452	1.228	62.97%
PPT	(B)	0.000	0.000	0.000	0.000	0.000	0.000	0.000	0.00%
HBD	(B)	0.601	0.689	0.457	0.321	0.799	0.876	1.923	98.64%
BLK	(B)	0.000	0.000	0.000	0.000	0.000	0.000	0.000	0.00%
CPL	(B)	0.528	0.635	0.848	0.323	0.486	0.036	0.027	1.36%
		Sell & Buy Orders Traded per Price Type							(%)
PPT	(S)	0	0	0	0	0	0	0	0.00%
HBD	(S)	224	241	207	85	235	217	180	100.00%
BLK	(S)	0	0	0	0	0	0	0	0.00%
PPT	(B)	0	0	0	0	0	0	0	0.00%
HBD	(B)	167	127	121	107	174	306	290	100.00%
BLK	(B)	0	0	0	0	0	0	0	0.00%

- MCP** Market Clearing Price (€/MWh)
- PPT** Priority Price-Taking
- HBD** Hybrid
- BLK** Block
- CPL** Market Coupling Flow

Trade's Volume Mix

	Sell - MWh	Buy - MWh	
Lignite (0.0%)	0	0	(0.0%)
Crete Conv. (0.0%)	0	0	(0.0%)
Gas (4.7%)	91	58	(3.0%)
Hydro (5.9%)	114	0	(0.0%)
Imports (63.0%)	1,228		
RES (23.0%)	449	597	(30.6%)
Crete RES (0.0%)	0	0	(0.0%)
BESS (0.0%)	0	0	(0.0%)
HV Load (0.2%)	4	1	(0.0%)
MV Load (0.8%)	15	448	(23.0%)
LV Load (2.5%)	49	819	(42.0%)
Crete Load (0.0%)	0	0	(0.0%)
Pumping (0.0%)	0	0	(0.0%)
Exports		27	(1.4%)
Sys.Losses (0.0%)	0	0	(0.0%)
D/R Load (0.0%)	0	0	(0.0%)

