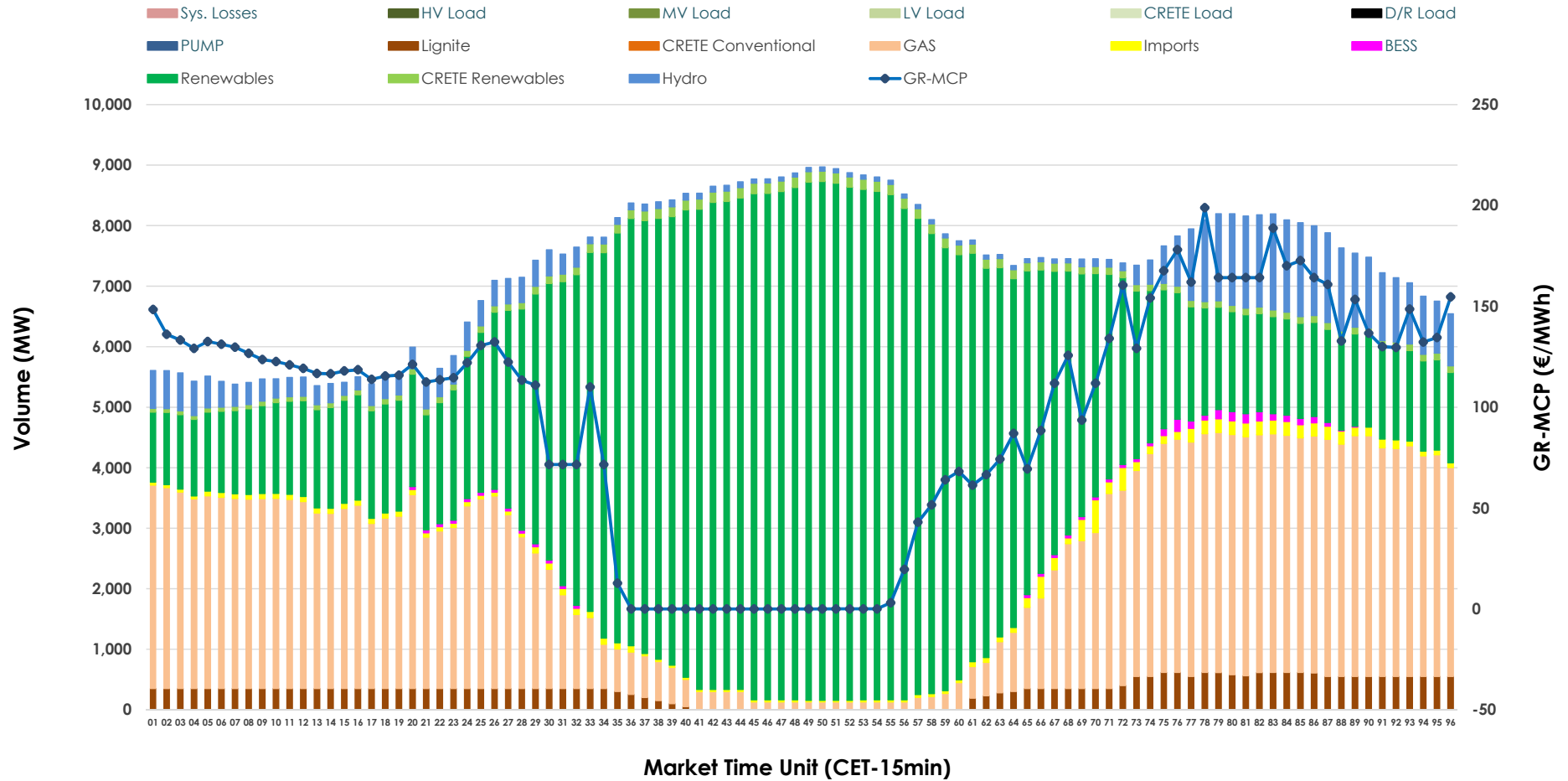


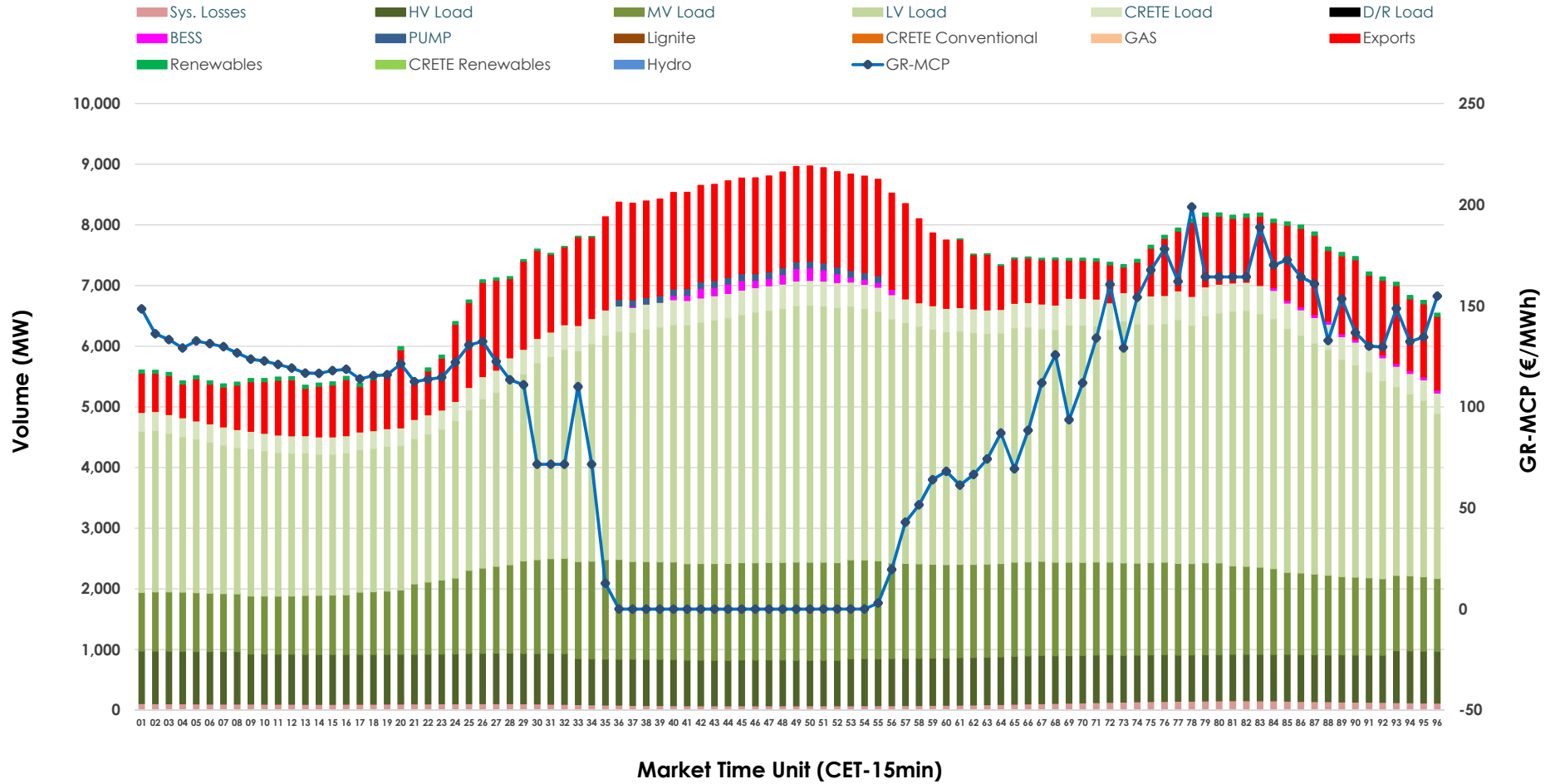


Day-Ahead Market Outlook

08.06.2026 Day-Ahead Market - Sell



08.06.2026 Day-Ahead Market - Buy



GR Bidding Zone Weekly Figures

Delivery Day	02.06	03.06	04.06	05.06	06.06	07.06	08.06
	➔ -1%	⬇️ -11%	↔️ 6%	↗️ 26%	⬇️ -29%	⬇️ -29%	⬆️ 65%
Avg.MCP (€/MWh)	96.31	85.72	91.05	114.69	81.97	57.86	95.42
Max.MCP (€/MWh)	171.60	150.00	210.77	182.76	156.59	144.30	198.86
Min.MCP (€/MWh)	0.00	0.00	5.44	18.59	0.00	-5.00	-0.01
	↗️ 5%	↗️ 3%	⬇️ -11%	⬇️ -2%	⬇️ -4%	⬇️ -9%	↗️ 26%
Tot.Vol(GWh)	357.43	367.73	327.39	321.16	306.90	280.10	351.55

Trades by Order Type

Delivery Day		02.06	03.06	04.06	05.06	06.06	07.06	08.06	
Ord Price Type		Sell & Buy Trades in (GWh) per Price Type							(%)
PPT	(S)	64.590	68.089	64.441	58.338	56.563	59.103	72.630	41.32%
HBD	(S)	80.307	78.424	66.852	70.853	63.063	47.065	72.260	41.11%
BLK	(S)	33.821	37.350	29.365	28.875	30.143	21.989	30.502	17.35%
CPL	(S)	0.000	0.000	3.038	2.516	3.683	11.896	0.382	0.22%
PPT	(B)	15.274	15.118	16.151	15.503	15.317	16.008	16.525	9.40%
HBD	(B)	135.591	142.718	141.396	136.467	128.886	123.201	142.899	81.30%
BLK	(B)	0.000	0.000	0.000	0.000	0.000	0.000	0.000	0.00%
CPL	(B)	27.852	26.028	6.148	8.612	9.249	0.843	16.351	9.30%
		Sell & Buy Orders Traded per Price Type							(%)
PPT	(S)	1754	1740	1703	1718	1725	1683	1794	34.93%
HBD	(S)	3467	3314	3595	3574	3457	2774	3328	64.80%
BLK	(S)	15	17	13	11	13	10	14	0.27%
PPT	(B)	2392	2388	2413	2359	2329	2349	2408	39.97%
HBD	(B)	3932	3986	4066	3898	3900	3851	3616	60.03%
BLK	(B)	0	0	0	0	0	0	0	0.00%

- MCP** Market Clearing Price (€/MWh)
- PPT** Priority Price-Taking
- HBD** Hybrid
- BLK** Block
- CPL** Market Coupling Flow

Trade's Volume Mix

	Sell - MWh	Buy - MWh	
Lignite (4.4%)	7,657	0	(0.0%)
Crete Conv. (0.0%)	0	0	(0.0%)
Gas (30.4%)	53,520	0	(0.0%)
Hydro (6.3%)	11,096	0	(0.0%)
Imports (1.5%)	2,611		
RES (55.4%)	97,298	759	(0.4%)
Crete RES (1.7%)	2,907	0	(0.0%)
BESS (0.4%)	685	723	(0.4%)
HV Load (0.0%)	0	19,062	(10.8%)
MV Load (0.0%)	0	33,238	(18.9%)
LV Load (0.0%)	0	82,535	(47.0%)
Crete Load (0.0%)	0	9,182	(5.2%)
Pumping (0.0%)	0	550	(0.3%)
Exports		27,178	(15.5%)
Sys.Losses (0.0%)	0	2,547	(1.4%)
D/R Load (0.0%)	0	0	(0.0%)

