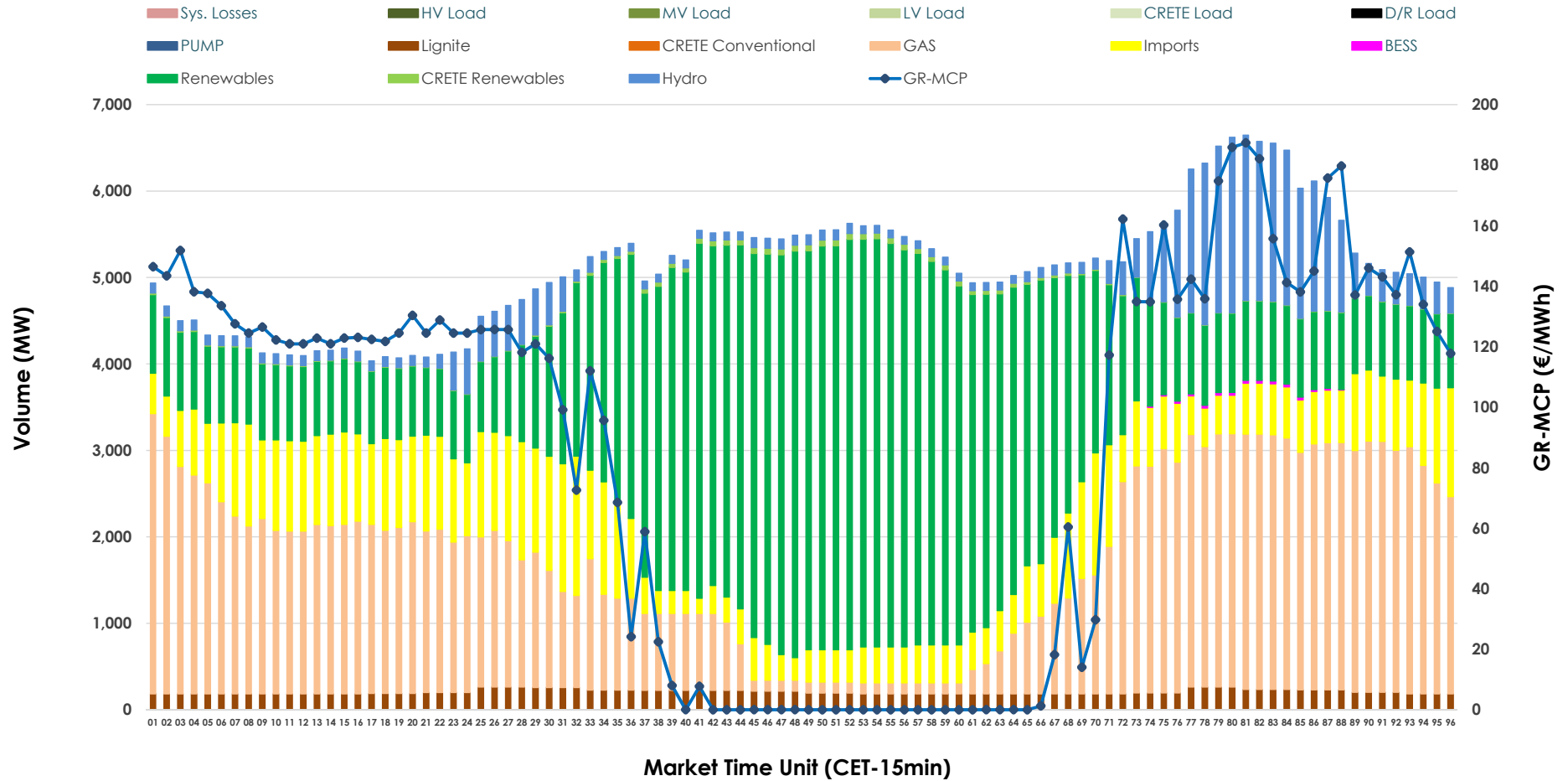


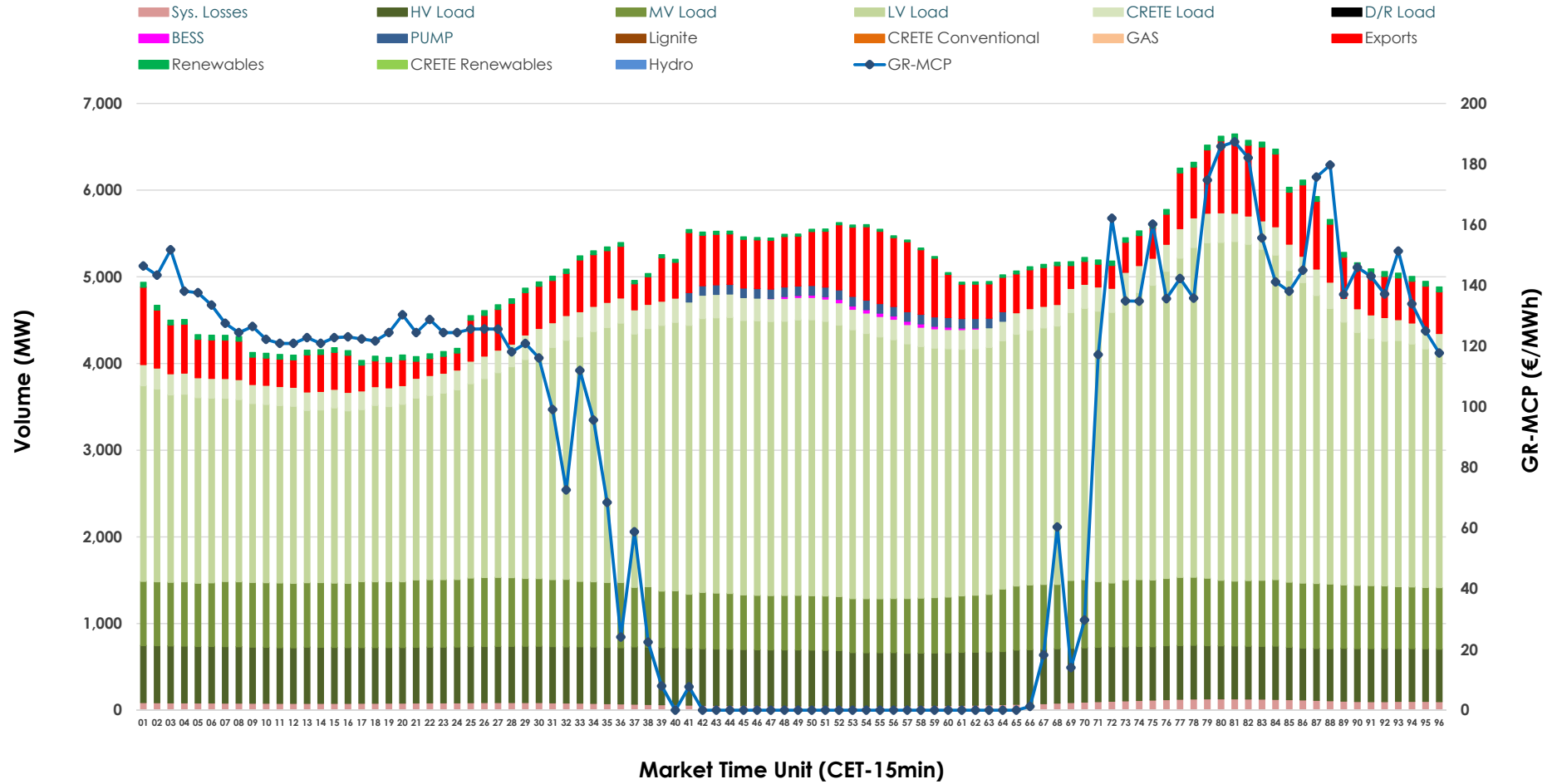


Day-Ahead Market Outlook

11.04.2026 Day-Ahead Market - Sell



11.04.2026 Day-Ahead Market - Buy



GR Bidding Zone Weekly Figures

Delivery Day	05.04	06.04	07.04	08.04	09.04	10.04	11.04
	↓ -56%	↑ 126%	↔ 21%	↓ -6%	↔ 17%	↔ 1%	↓ -8%
Avg.MCP (€/MWh)	31.16	70.35	85.32	80.41	94.31	95.30	87.39
Max.MCP (€/MWh)	141.02	185.89	204.50	188.91	186.55	195.45	187.36
Min.MCP (€/MWh)	-50.00	-25.02	-5.30	-10.00	-0.20	-11.00	0.00
	↓ -8%	↔ 9%	↔ 8%	↓ -3%	↔ 0%	↓ -5%	↓ -16%
Tot.Vol(GWh)	269.89	294.16	316.70	308.22	307.58	293.32	245.55

Trades by Order Type

Delivery Day		05.04	06.04	07.04	08.04	09.04	10.04	11.04	
Ord Price Type		Sell & Buy Trades in (GWh) per Price Type							(%)
PPT	(S)	67.826	55.691	50.282	57.974	46.078	45.843	36.771	29.95%
HBD	(S)	50.179	52.265	65.823	65.356	66.565	63.588	51.590	42.02%
BLK	(S)	9.239	12.305	26.897	23.861	29.612	27.799	23.858	19.43%
CPL	(S)	7.703	26.818	15.351	6.920	11.536	9.432	10.557	8.60%
PPT	(B)	12.273	13.969	14.822	14.696	14.403	14.353	13.243	10.79%
HBD	(B)	118.500	131.370	133.078	129.253	128.131	117.012	106.422	86.68%
BLK	(B)	0.000	0.000	0.000	0.000	0.000	0.000	0.000	0.00%
CPL	(B)	4.173	1.739	10.452	10.162	11.257	15.297	3.111	2.53%
		Sell & Buy Orders Traded per Price Type							(%)
PPT	(S)	1579	1525	1462	1471	1484	1489	1463	33.53%
HBD	(S)	1986	2384	2864	2687	3007	2818	2888	66.19%
BLK	(S)	8	9	12	10	14	13	12	0.28%
PPT	(B)	2234	2307	2350	2364	2345	2358	2369	36.72%
HBD	(B)	4339	3974	4032	4113	4014	4151	4083	63.28%
BLK	(B)	0	0	0	0	0	0	0	0.00%

- MCP** Market Clearing Price (€/MWh)
- PPT** Priority Price-Taking
- HBD** Hybrid
- BLK** Block
- CPL** Market Coupling Flow

Trade's Volume Mix

		Sell - MWh	Buy - MWh	
Lignite	(4.0%)	4,936	0	(0.0%)
Crete Conv.	(0.0%)	0	0	(0.0%)
Gas	(31.7%)	38,906	0	(0.0%)
Hydro	(7.8%)	9,574	0	(0.0%)
Imports	(14.6%)	17,951		
RES	(41.3%)	50,699	1,055	(0.9%)
Crete RES	(0.5%)	613	0	(0.0%)
BESS	(0.1%)	97	115	(0.1%)
HV Load	(0.0%)	0	15,200	(12.4%)
MV Load	(0.0%)	0	17,349	(14.1%)
LV Load	(0.0%)	0	67,860	(55.3%)
Crete Load	(0.0%)	0	6,264	(5.1%)
Pumping	(0.0%)	0	660	(0.5%)
Exports			12,284	(10.0%)
Sys.Losses	(0.0%)	0	1,990	(1.6%)
D/R Load	(0.0%)	0	0	(0.0%)

