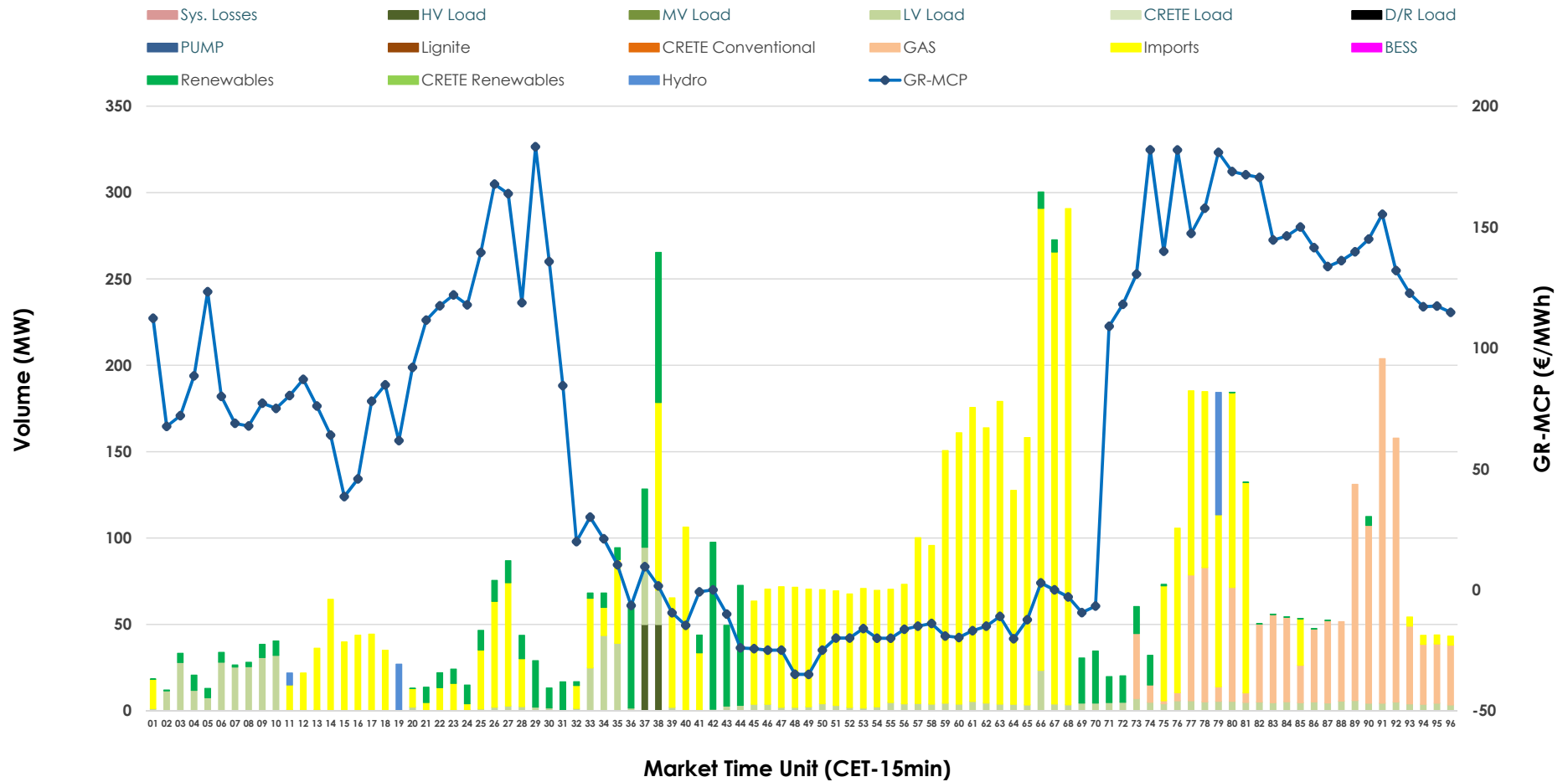


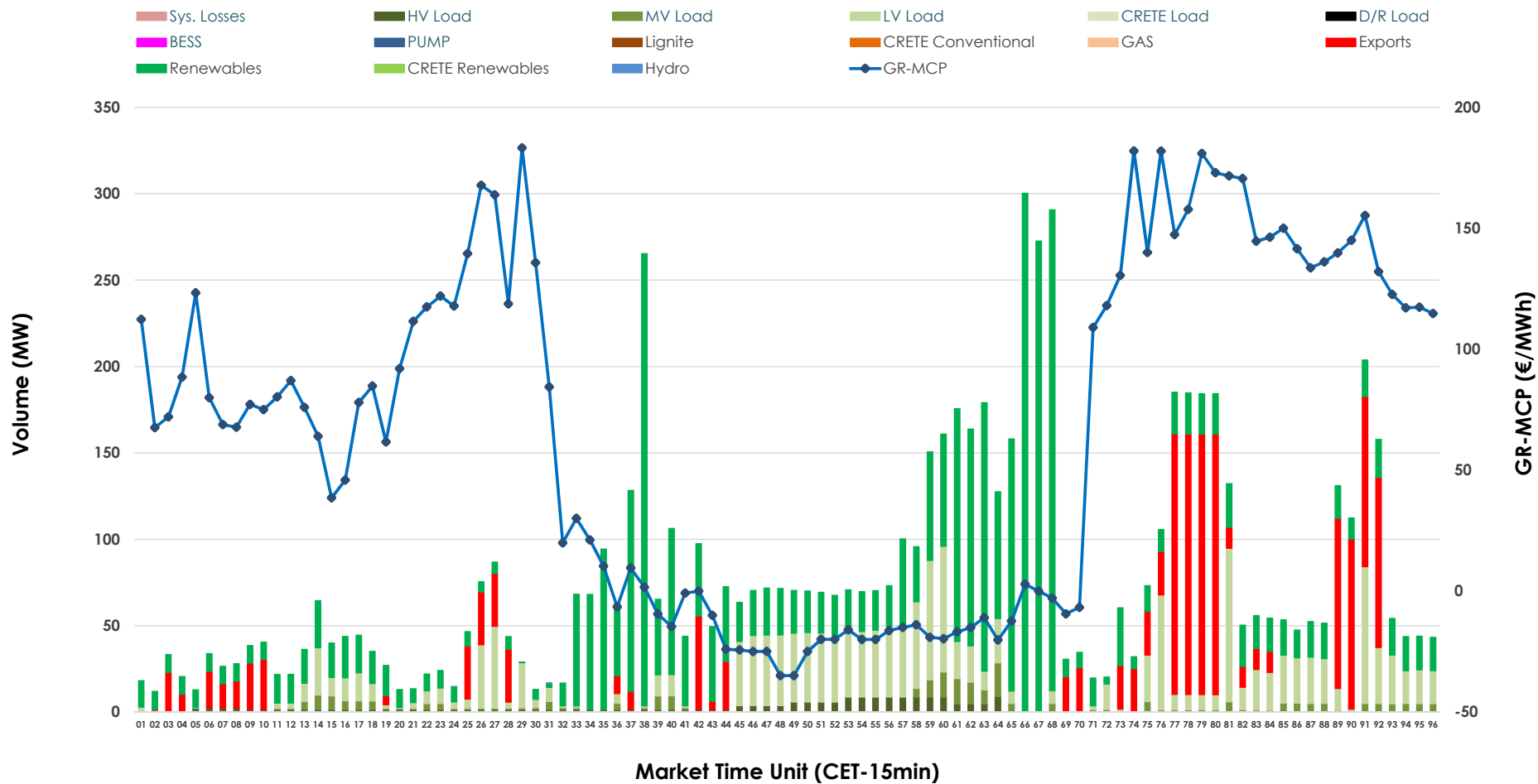


IDA '1' Market Outlook

06.04.2026 IDA '1' Market - Sell



06.04.2026 IDA '1' Market - Buy



GR Bidding Zone Weekly Figures

Delivery Day	31.03	01.04	02.04	03.04	04.04	05.04	06.04
	↗ 11%	↗ 17%	↘ -13%	↘ -5%	↘ -46%	↘ -56%	↗ 116%
Avg.MCP (€/MWh)	132.20	154.80	135.24	128.53	69.11	30.63	66.14
Max.MCP (€/MWh)	225.72	247.00	211.87	216.28	185.47	138.01	183.21
Min.MCP (€/MWh)	91.35	117.05	103.00	14.27	-7.10	-50.00	-34.93
	↗ 59%	↗ 55%	↘ -39%	↗ 2%	↘ -8%	↗ 20%	↘ -33%
Tot.Vol(GWh)	5.35	8.30	5.03	5.11	4.69	5.62	3.78

Trades by Order Type

Delivery Day		31.03	01.04	02.04	03.04	04.04	05.04	06.04	
Ord Price Type		Sell & Buy Trades in (GWh) per Price Type							(%)
PPT	(S)	0.000	0.000	0.000	0.000	0.000	0.000	0.000	0.00%
HBD	(S)	2.355	2.648	1.798	1.416	1.713	0.741	0.730	38.67%
BLK	(S)	0.000	0.000	0.000	0.000	0.000	0.000	0.000	0.00%
CPL	(S)	0.319	1.504	0.717	1.137	0.629	2.069	1.158	61.33%
PPT	(B)	0.000	0.000	0.000	0.000	0.000	0.000	0.000	0.00%
HBD	(B)	2.175	2.116	1.223	1.302	1.153	2.734	1.496	79.23%
BLK	(B)	0.000	0.000	0.000	0.000	0.000	0.000	0.000	0.00%
CPL	(B)	0.499	2.035	1.292	1.251	1.190	0.077	0.392	20.77%
		Sell & Buy Orders Traded per Price Type							(%)
PPT	(S)	0	0	0	0	0	0	0	0.00%
HBD	(S)	376	368	277	381	412	120	164	100.00%
BLK	(S)	0	0	0	0	0	0	0	0.00%
PPT	(B)	0	0	0	0	0	0	0	0.00%
HBD	(B)	719	673	831	586	788	412	449	100.00%
BLK	(B)	0	0	0	0	0	0	0	0.00%

- MCP** Market Clearing Price (€/MWh)
- PPT** Priority Price-Taking
- HBD** Hybrid
- BLK** Block
- CPL** Market Coupling Flow

Trade's Volume Mix

		Sell - MWh	Buy - MWh	
Lignite	(0.0%)	0	0	(0.0%)
Crete Conv.	(0.0%)	0	0	(0.0%)
Gas	(17.4%)	329	0	(0.0%)
Hydro	(1.4%)	26	0	(0.0%)
Imports	(61.3%)	1,158		
RES	(10.0%)	188	958	(50.8%)
Crete RES	(0.0%)	0	0	(0.0%)
BESS	(0.0%)	0	0	(0.0%)
HV Load	(1.3%)	25	49	(2.6%)
MV Load	(0.0%)	0	63	(3.3%)
LV Load	(8.6%)	162	426	(22.6%)
Crete Load	(0.0%)	0	0	(0.0%)
Pumping	(0.0%)	0	0	(0.0%)
Exports			392	(20.8%)
Sys.Losses	(0.0%)	0	0	(0.0%)
D/R Load	(0.0%)	0	0	(0.0%)

