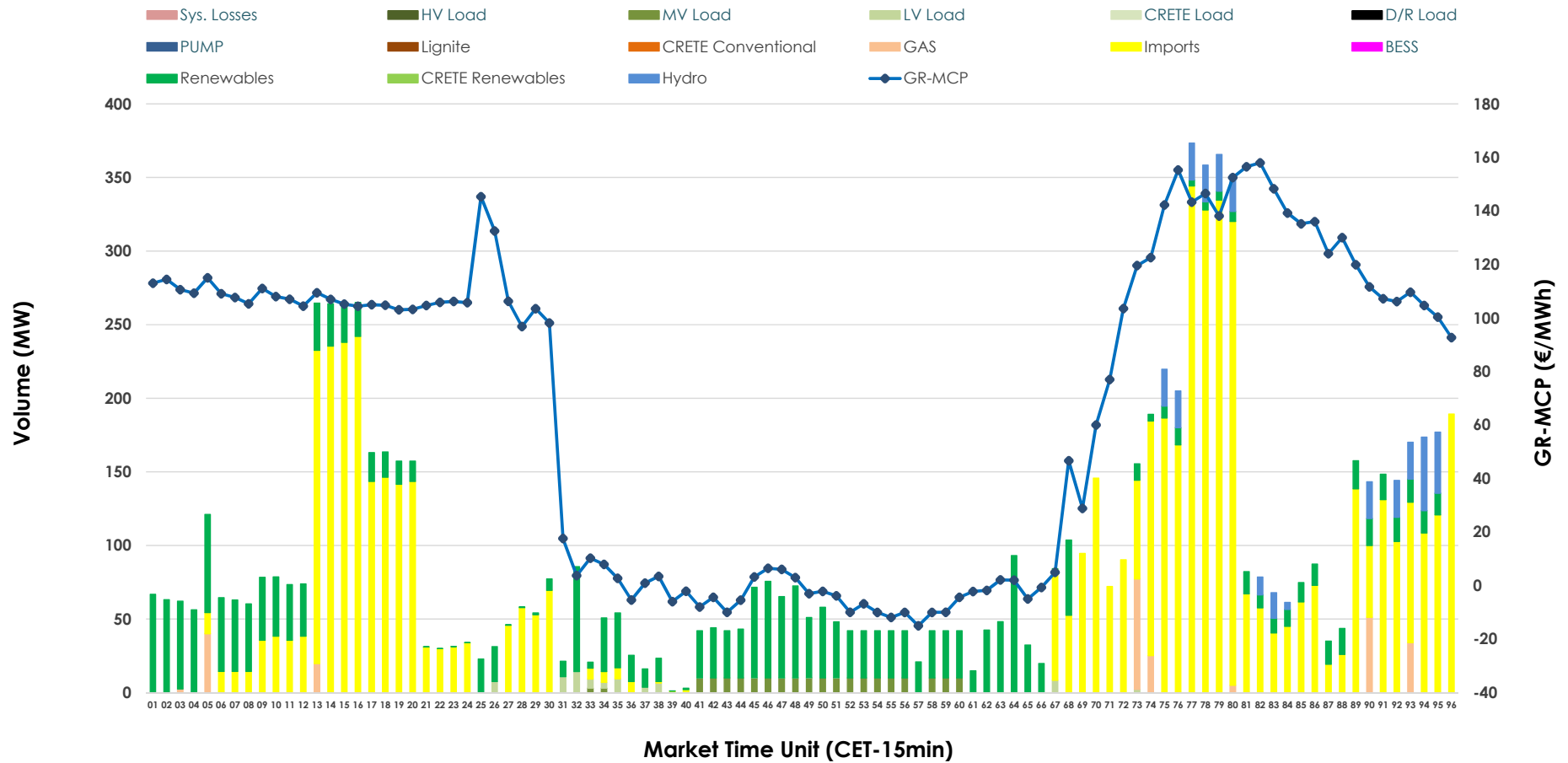


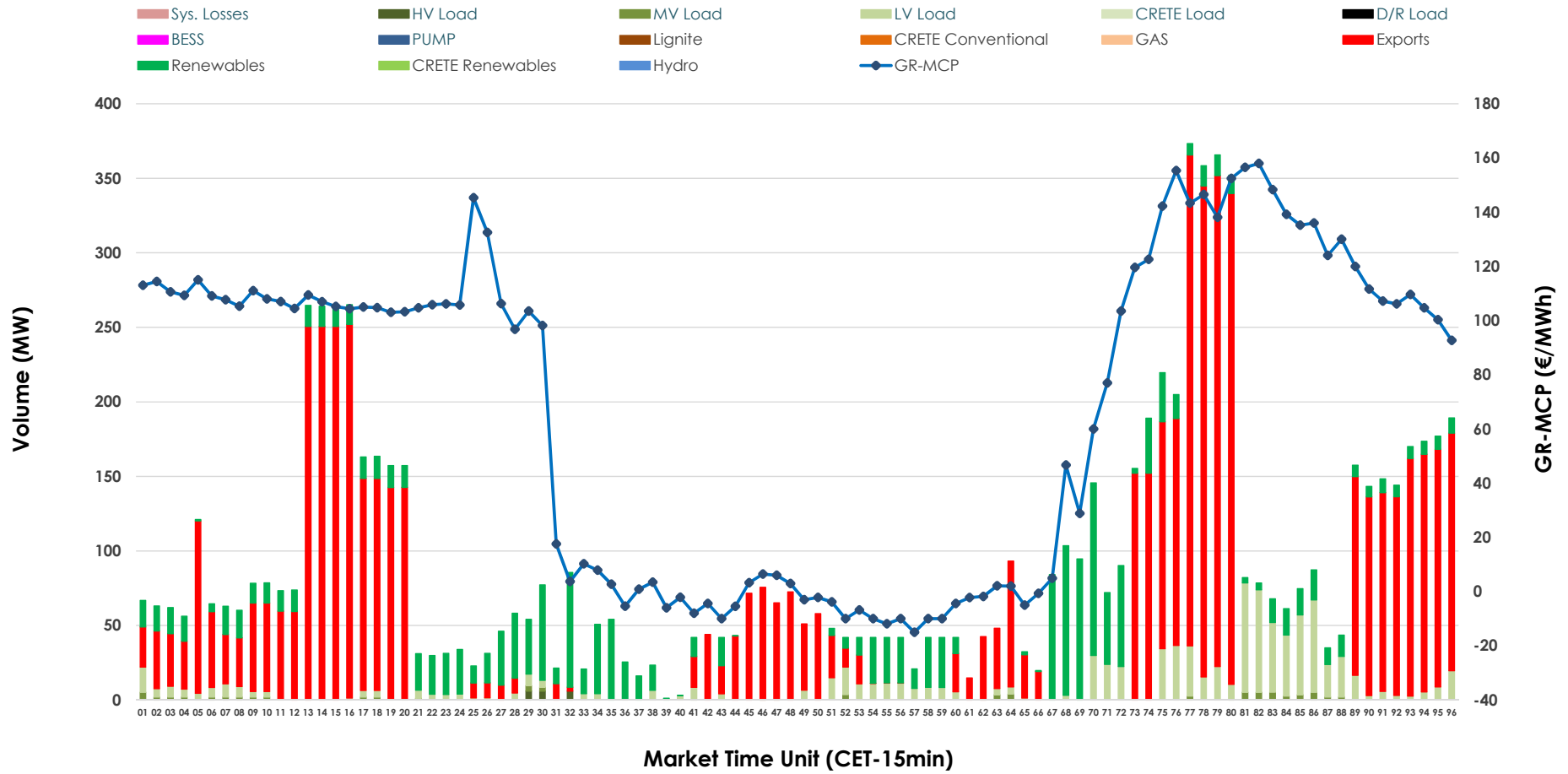


# IDA '2' Market Outlook

19.04.2026 IDA '2' Market - Sell



### 19.04.2026 IDA '2' Market - Buy



### GR Bidding Zone Weekly Figures

Delivery Day	13.04	14.04	15.04	16.04	17.04	18.04	19.04
	↗ 20%	↕ 41%	↘ -8%			↘ -16%	↗ 10%
<b>Avg.MCP (€/MWh)</b>	98.24	138.59	126.89	N/M	73.93	62.35	68.79
<b>Max.MCP (€/MWh)</b>	164.38	261.33	188.32	N/M	175.78	143.35	157.98
<b>Min.MCP (€/MWh)</b>	2.00	86.61	82.00	N/M	-13.57	-15.00	-15.00
	↕ 43%	↘ -51%	↕ 167%		↕ 43%	↘ -12%	
<b>Tot.Vol(GWh)</b>	5.74	2.78	7.43	N/M	3.62	5.16	4.57

### Trades by Order Type

Delivery Day		13.04	14.04	15.04	16.04	17.04	18.04	19.04	
<b>Ord Price Type</b>		<b>Sell &amp; Buy Trades in (GWh) per Price Type</b>							<b>(%)</b>
<b>PPT</b>	(S)	0.000	0.000	0.000		0.000	0.000	0.000	0.00%
<b>HBD</b>	(S)	1.800	0.620	1.018		1.163	1.881	0.822	35.97%
<b>BLK</b>	(S)	0.000	0.000	0.000		0.000	0.000	0.000	0.00%
<b>CPL</b>	(S)	1.070	0.772	2.700		0.645	0.701	1.463	64.03%
<b>PPT</b>	(B)	0.000	0.000	0.000		0.000	0.000	0.000	0.00%
<b>HBD</b>	(B)	1.419	1.141	1.789		0.995	2.486	0.746	32.66%
<b>BLK</b>	(B)	0.000	0.000	0.000		0.000	0.000	0.000	0.00%
<b>CPL</b>	(B)	1.450	0.252	1.929		0.813	0.096	1.539	67.34%
		<b>Sell &amp; Buy Orders Traded per Price Type</b>							<b>(%)</b>
<b>PPT</b>	(S)	0	0	0		0	0	0	0.00%
<b>HBD</b>	(S)	370	197	188		234	223	212	100.00%
<b>BLK</b>	(S)	0	0	0		0	0	0	0.00%
<b>PPT</b>	(B)	0	0	0		0	0	0	0.00%
<b>HBD</b>	(B)	448	369	479		335	471	416	100.00%
<b>BLK</b>	(B)	0	0	0		0	0	0	0.00%

- MCP** Market Clearing Price (€/MWh)
- PPT** Priority Price-Taking
- HBD** Hybrid
- BLK** Block
- CPL** Market Coupling Flow

### Trade's Volume Mix

	Sell - MWh	Buy - MWh	
<b>Lignite</b> (0.0%)	0	0	(0.0%)
<b>Crete Conv.</b> (0.0%)	0	0	(0.0%)
<b>Gas</b> (2.8%)	63	0	(0.0%)
<b>Hydro</b> (3.8%)	88	0	(0.0%)
<b>Imports</b> (64.0%)	1,463		
<b>RES</b> (26.4%)	604	481	(21.0%)
<b>Crete RES</b> (0.0%)	0	0	(0.0%)
<b>BESS</b> (0.0%)	0	0	(0.0%)
<b>HV Load</b> (0.0%)	0	5	(0.2%)
<b>MV Load</b> (2.1%)	49	20	(0.9%)
<b>LV Load</b> (0.8%)	18	241	(10.6%)
<b>Crete Load</b> (0.0%)	0	0	(0.0%)
<b>Pumping</b> (0.0%)	0	0	(0.0%)
<b>Exports</b>		1,539	(67.3%)
<b>Sys.Losses</b> (0.0%)	0	0	(0.0%)
<b>D/R Load</b> (0.0%)	0	0	(0.0%)

