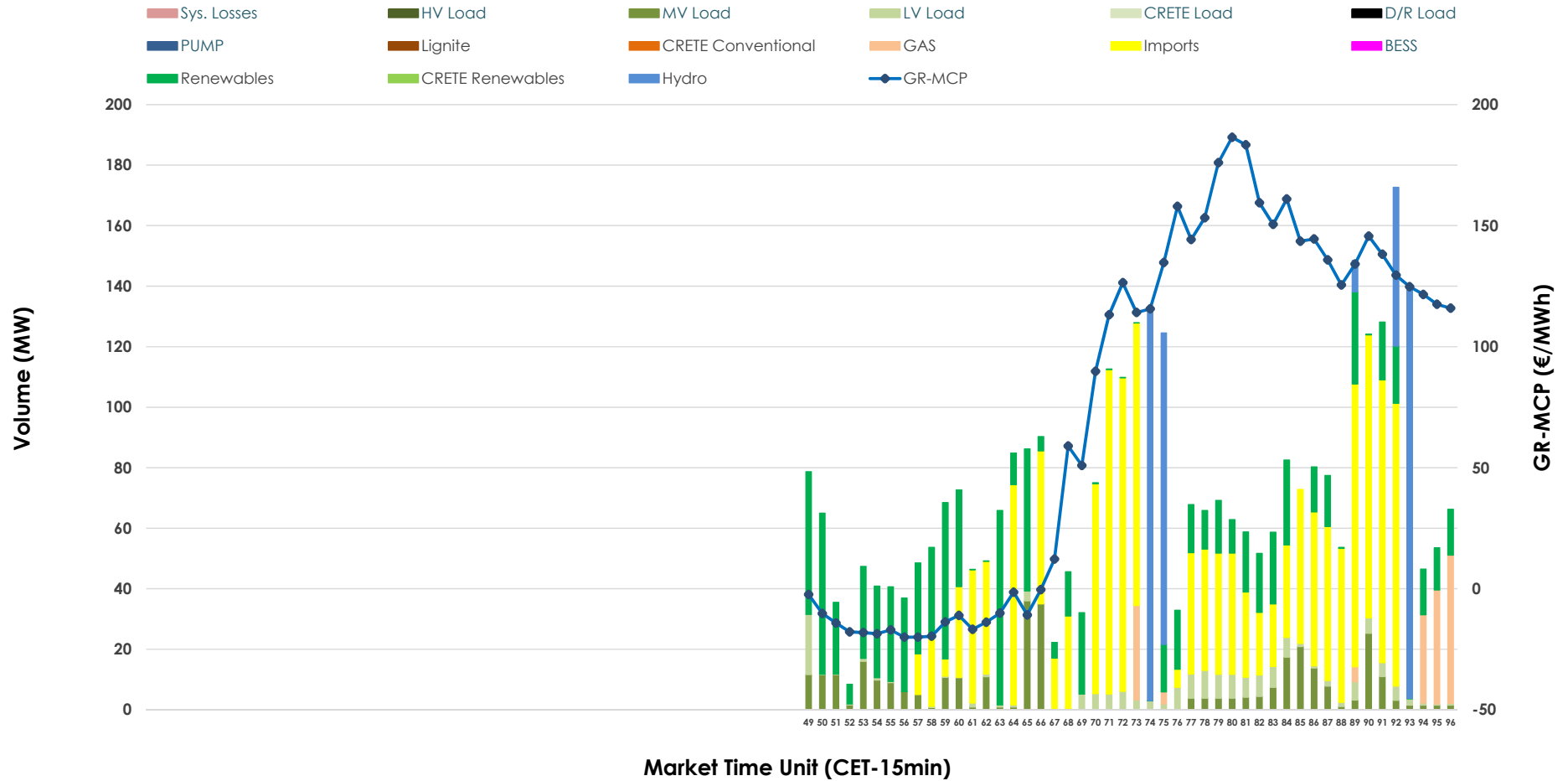


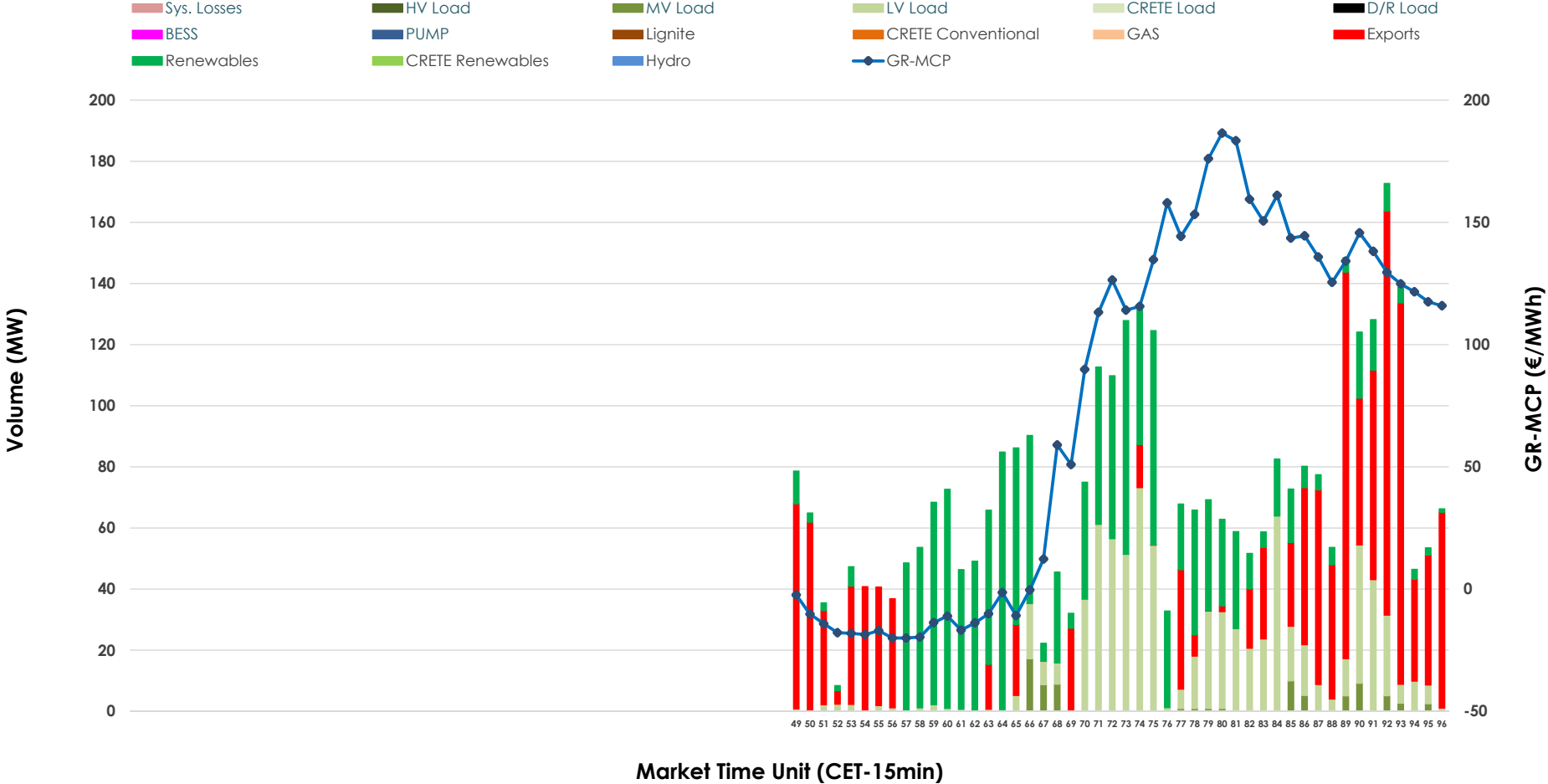


# IDA '3' Market Outlook

08.04.2026 IDA '3' Market - Sell



### 08.04.2026 IDA '3' Market - Buy



### GR Bidding Zone Weekly Figures

Delivery Day	02.04	03.04	04.04	05.04	06.04	07.04	08.04
		👇 -3%	👇 -65%	👇 -54%	👆 102%	👆 44%	👆 21%
<b>Avg.MCP (€/MWh)</b>	136.63	132.06	46.59	21.49	43.45	62.41	75.60
<b>Max.MCP (€/MWh)</b>	190.13	203.39	129.90	97.54	191.43	184.28	186.48
<b>Min.MCP (€/MWh)</b>	104.38	59.05	-11.64	-65.92	-123.91	-48.10	-20.01
		👇 -17%	👇 -30%	👇 -69%	👆 115%	👇 -14%	👆 23%
<b>Tot.Vol(GWh)</b>	4.25	3.55	2.49	0.77	1.65	1.43	1.76

### Trades by Order Type

Delivery Day		02.04	03.04	04.04	05.04	06.04	07.04	08.04	
Ord Price Type		Sell & Buy Trades in (GWh) per Price Type							(%)
<b>PPT</b>	(S)	0.000	0.000	0.000	0.000	0.000	0.000	0.000	0.00%
<b>HBD</b>	(S)	0.189	0.695	1.245	0.338	0.322	0.601	0.493	56.11%
<b>BLK</b>	(S)	0.000	0.000	0.000	0.000	0.000	0.000	0.000	0.00%
<b>CPL</b>	(S)	1.938	1.080	0.000	0.046	0.503	0.112	0.386	43.89%
<b>PPT</b>	(B)	0.000	0.000	0.000	0.000	0.000	0.000	0.000	0.00%
<b>HBD</b>	(B)	1.640	0.807	0.126	0.200	0.768	0.321	0.548	62.42%
<b>BLK</b>	(B)	0.000	0.000	0.000	0.000	0.000	0.000	0.000	0.00%
<b>CPL</b>	(B)	0.487	0.968	1.120	0.184	0.057	0.392	0.330	37.58%
		Sell & Buy Orders Traded per Price Type							(%)
<b>PPT</b>	(S)	0	0	0	0	0	0	0	0.00%
<b>HBD</b>	(S)	143	309	206	130	65	141	206	100.00%
<b>BLK</b>	(S)	0	0	0	0	0	0	0	0.00%
<b>PPT</b>	(B)	0	0	0	0	0	0	0	0.00%
<b>HBD</b>	(B)	412	283	112	130	197	112	154	100.00%
<b>BLK</b>	(B)	0	0	0	0	0	0	0	0.00%

- MCP** Market Clearing Price (€/MWh)
- PPT** Priority Price-Taking
- HBD** Hybrid
- BLK** Block
- CPL** Market Coupling Flow

### Trade's Volume Mix

	Sell - MWh	Buy - MWh	
<b>Lignite</b> (0.0%)	0	0	(0.0%)
<b>Crete Conv.</b> (0.0%)	0	0	(0.0%)
<b>Gas</b> (4.4%)	39	0	(0.0%)
<b>Hydro</b> (12.2%)	107	0	(0.0%)
<b>Imports</b> (43.9%)	386		
<b>RES</b> (25.6%)	225	326	(37.1%)
<b>Crete RES</b> (0.0%)	0	0	(0.0%)
<b>BESS</b> (0.0%)	0	0	(0.0%)
<b>HV Load</b> (0.0%)	0	0	(0.0%)
<b>MV Load</b> (9.4%)	82	20	(2.3%)
<b>LV Load</b> (4.5%)	39	203	(23.1%)
<b>Crete Load</b> (0.0%)	0	0	(0.0%)
<b>Pumping</b> (0.0%)	0	0	(0.0%)
<b>Exports</b>		330	(37.6%)
<b>Sys.Losses</b> (0.0%)	0	0	(0.0%)
<b>D/R Load</b> (0.0%)	0	0	(0.0%)

