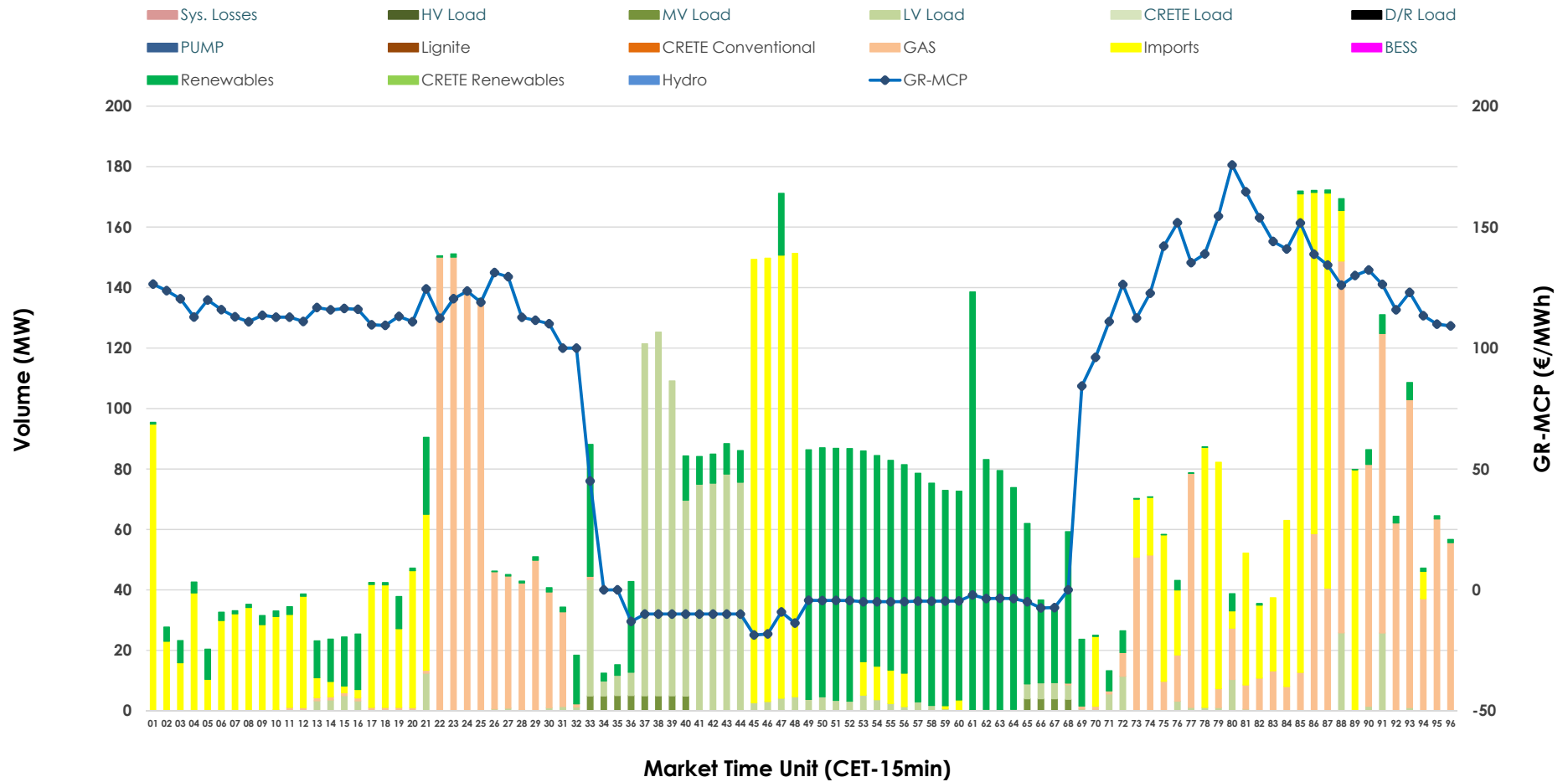


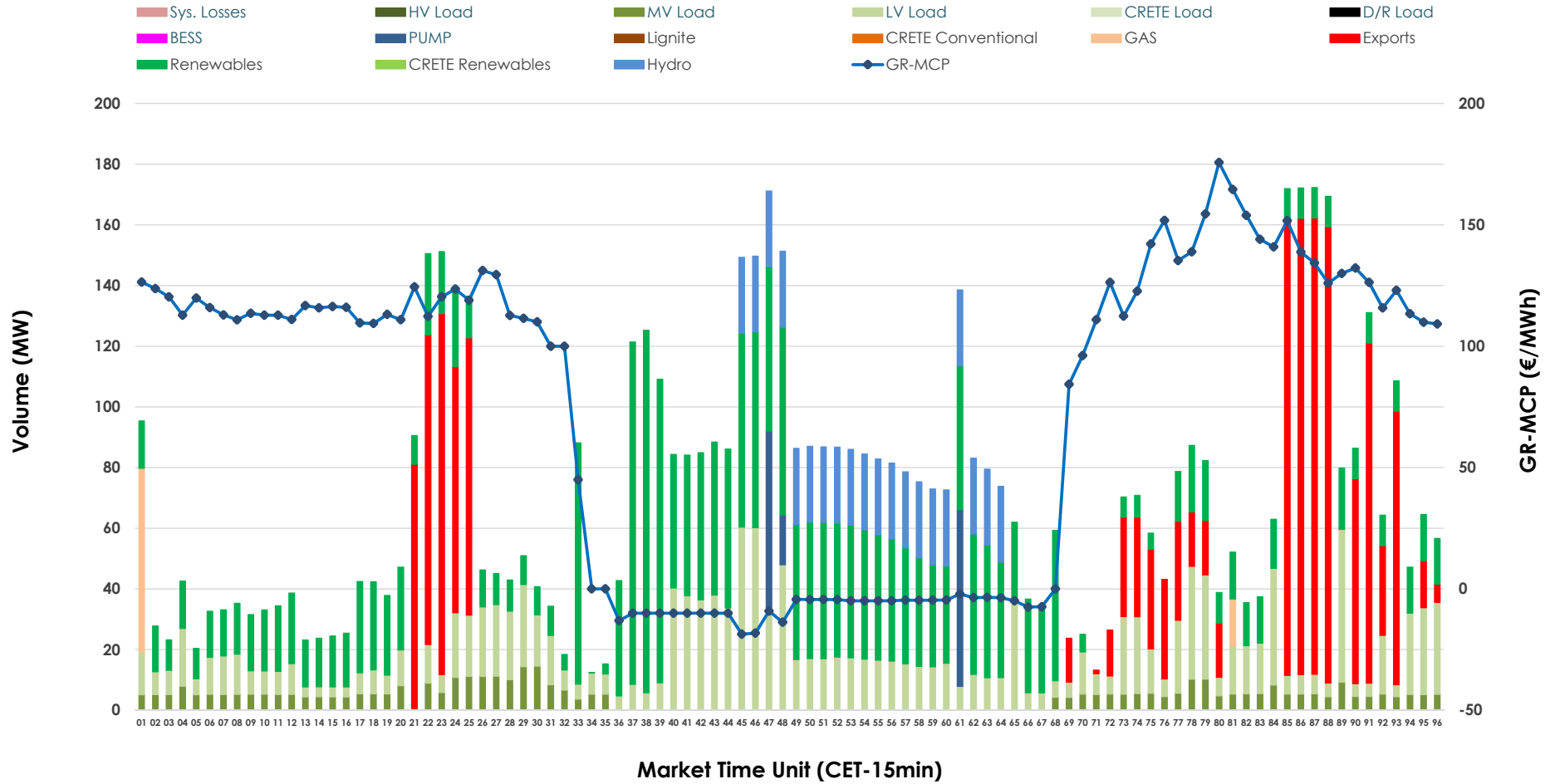


IDA '1' Market Outlook

17.04.2026 IDA '1' Market - Sell



17.04.2026 IDA '1' Market - Buy



GR Bidding Zone Weekly Figures

Delivery Day	11.04	12.04	13.04	14.04	15.04	16.04	17.04
	👇 -11%	👇 -5%	👆 10%	👆 50%	👇 -7%		
Avg.MCP (€/MWh)	85.00	80.90	88.91	133.10	124.20	N/M	74.62
Max.MCP (€/MWh)	184.98	160.00	166.41	266.00	172.06	N/M	175.68
Min.MCP (€/MWh)	-9.45	-6.33	-12.71	14.48	65.70	N/M	-18.65
	👆 9%	👆 29%	👇 -30%	👆 -1%			
Tot.Vol(GWh)	3.62	4.68	3.28	3.26	N/M	N/M	3.45

Trades by Order Type

Delivery Day		11.04	12.04	13.04	14.04	15.04	16.04	17.04	
Ord Price Type		Sell & Buy Trades in (GWh) per Price Type							(%)
PPT	(S)	0.000	0.000	0.000	0.000	0.000	0.000	0.000	0.00%
HBD	(S)	1.223	1.593	0.819	1.136	0.000		1.172	67.91%
BLK	(S)	0.000	0.000	0.000	0.000	0.000		0.000	0.00%
CPL	(S)	0.588	0.749	0.822	0.492	0.000		0.554	32.09%
PPT	(B)	0.000	0.000	0.000	0.000	0.000		0.000	0.00%
HBD	(B)	1.339	1.271	0.971	0.771	0.000		1.314	76.16%
BLK	(B)	0.000	0.000	0.000	0.000	0.000		0.000	0.00%
CPL	(B)	0.472	1.072	0.670	0.858	0.000		0.411	23.84%
		Sell & Buy Orders Traded per Price Type							(%)
PPT	(S)	0	0	0	0	0		0	0.00%
HBD	(S)	85	162	89	127	130		211	100.00%
BLK	(S)	0	0	0	0	0		0	0.00%
PPT	(B)	0	0	0	0	0		0	0.00%
HBD	(B)	670	451	567	501	793		634	100.00%
BLK	(B)	0	0	0	0	0		0	0.00%

- MCP** Market Clearing Price (€/MWh)
- PPT** Priority Price-Taking
- HBD** Hybrid
- BLK** Block
- CPL** Market Coupling Flow

Trade's Volume Mix

	Sell - MWh	Buy - MWh	
Lignite (0.0%)	0	0	(0.0%)
Crete Conv. (0.0%)	0	0	(0.0%)
Gas (26.8%)	463	19	(1.1%)
Hydro (0.0%)	0	125	(7.2%)
Imports (32.1%)	554		
RES (26.3%)	454	643	(37.3%)
Crete RES (0.0%)	0	0	(0.0%)
BESS (0.0%)	0	0	(0.0%)
HV Load (0.0%)	0	0	(0.0%)
MV Load (0.9%)	15	100	(5.8%)
LV Load (13.9%)	240	394	(22.8%)
Crete Load (0.0%)	0	0	(0.0%)
Pumping (0.0%)	0	33	(1.9%)
Exports		411	(23.8%)
Sys.Losses (0.0%)	0	0	(0.0%)
D/R Load (0.0%)	0	0	(0.0%)

