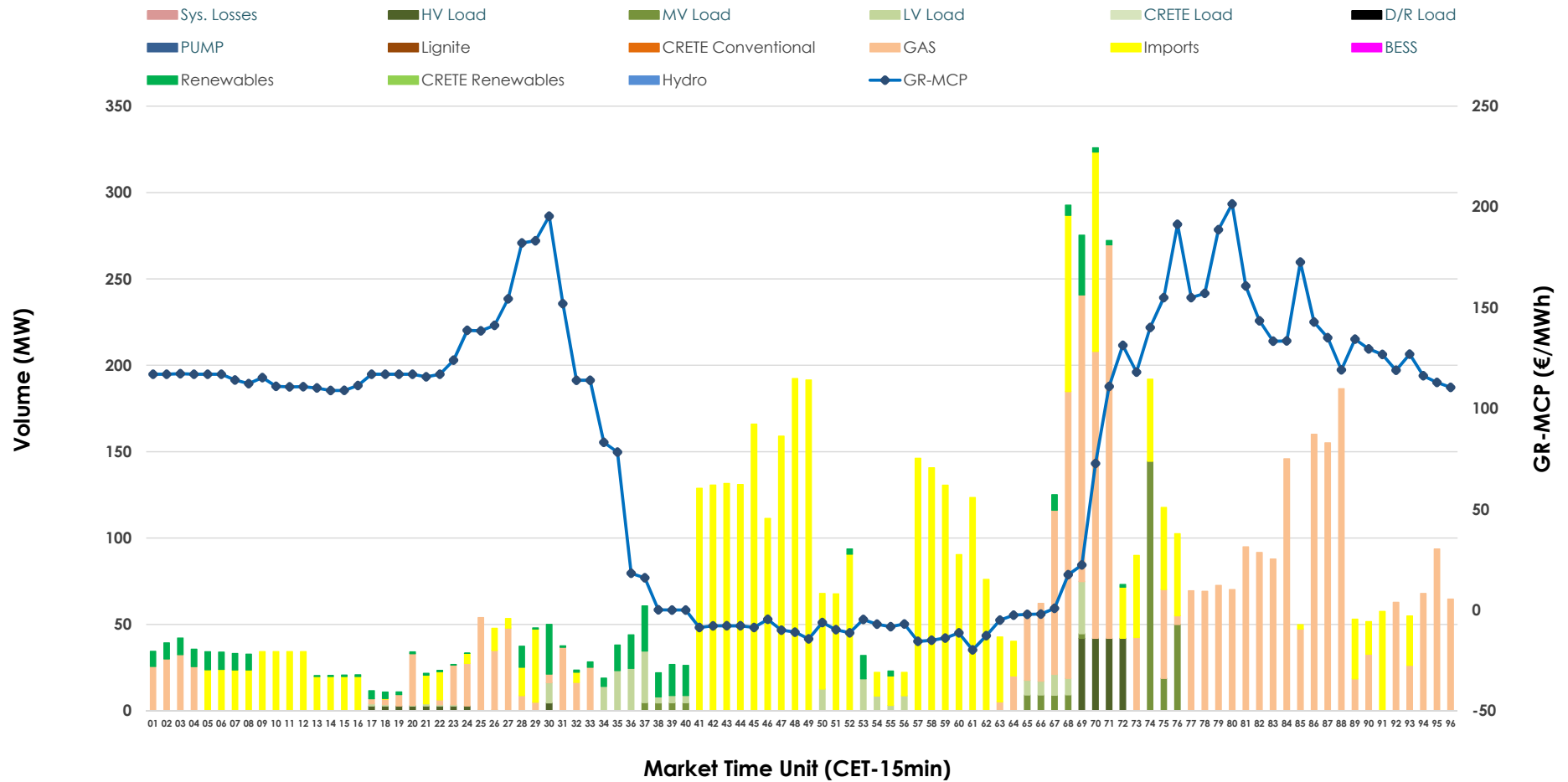


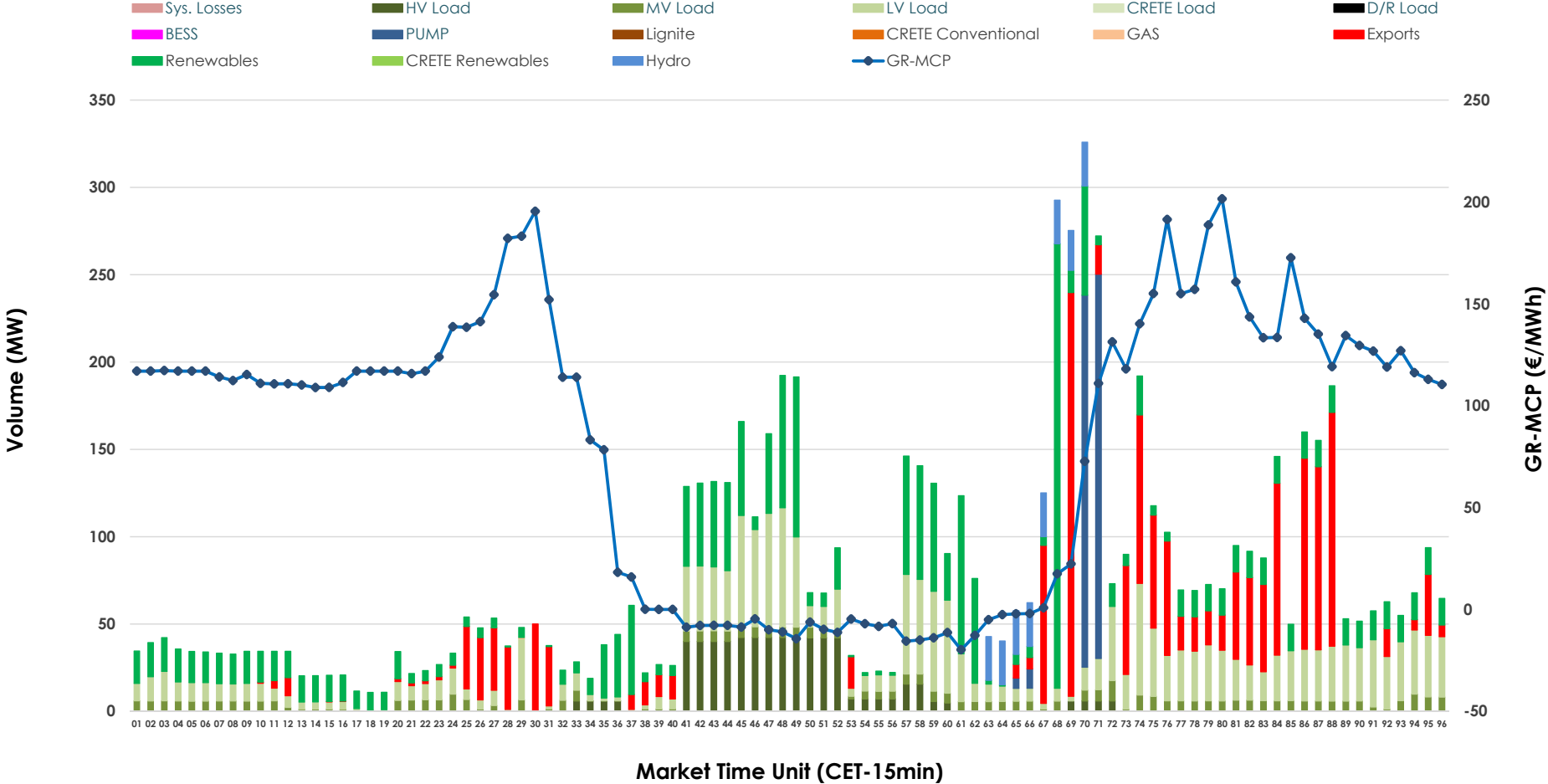


IDA '1' Market Outlook

07.04.2026 IDA '1' Market - Sell



07.04.2026 IDA '1' Market - Buy



GR Bidding Zone Weekly Figures

Delivery Day	01.04	02.04	03.04	04.04	05.04	06.04	07.04
	↗ 17%	↘ -13%	↘ -5%	↘ -46%	↘ -56%	↗ 116%	↗ 24%
Avg.MCP (€/MWh)	154.80	135.24	128.53	69.11	30.63	66.14	82.25
Max.MCP (€/MWh)	247.00	211.87	216.28	185.47	138.01	183.21	201.50
Min.MCP (€/MWh)	117.05	103.00	14.27	-7.10	-50.00	-34.93	-19.78
	↗ 55%	↘ -39%	↗ 2%	↘ -8%	↗ 20%	↘ -33%	↗ -1%
Tot.Vol(GWh)	8.30	5.03	5.11	4.69	5.62	3.78	3.75

Trades by Order Type

Delivery Day		01.04	02.04	03.04	04.04	05.04	06.04	07.04	
Ord Price Type		Sell & Buy Trades in (GWh) per Price Type							(%)
PPT	(S)	0.000	0.000	0.000	0.000	0.000	0.000	0.000	0.00%
HBD	(S)	2.648	1.798	1.416	1.713	0.741	0.730	1.032	55.02%
BLK	(S)	0.000	0.000	0.000	0.000	0.000	0.000	0.000	0.00%
CPL	(S)	1.504	0.717	1.137	0.629	2.069	1.158	0.844	44.98%
PPT	(B)	0.000	0.000	0.000	0.000	0.000	0.000	0.000	0.00%
HBD	(B)	2.116	1.223	1.302	1.153	2.734	1.496	1.451	77.38%
BLK	(B)	0.000	0.000	0.000	0.000	0.000	0.000	0.000	0.00%
CPL	(B)	2.035	1.292	1.251	1.190	0.077	0.392	0.424	22.62%
		Sell & Buy Orders Traded per Price Type							(%)
PPT	(S)	0	0	0	0	0	0	0	0.00%
HBD	(S)	368	277	381	412	120	164	122	100.00%
BLK	(S)	0	0	0	0	0	0	0	0.00%
PPT	(B)	0	0	0	0	0	0	0	0.00%
HBD	(B)	673	831	586	788	412	449	865	100.00%
BLK	(B)	0	0	0	0	0	0	0	0.00%

- MCP** Market Clearing Price (€/MWh)
- PPT** Priority Price-Taking
- HBD** Hybrid
- BLK** Block
- CPL** Market Coupling Flow

Trade's Volume Mix

	Sell - MWh	Buy - MWh	
Lignite (0.0%)	0	0	(0.0%)
Crete Conv. (0.0%)	0	0	(0.0%)
Gas (41.1%)	772	0	(0.0%)
Hydro (0.0%)	0	49	(2.6%)
Imports (45.0%)	844		
RES (4.4%)	82	529	(28.2%)
Crete RES (0.0%)	0	0	(0.0%)
BESS (0.0%)	0	0	(0.0%)
HV Load (2.6%)	49	154	(8.2%)
MV Load (3.7%)	69	117	(6.2%)
LV Load (3.2%)	60	489	(26.1%)
Crete Load (0.0%)	0	0	(0.0%)
Pumping (0.0%)	0	112	(6.0%)
Exports		424	(22.6%)
Sys.Losses (0.0%)	0	0	(0.0%)
D/R Load (0.0%)	0	0	(0.0%)

