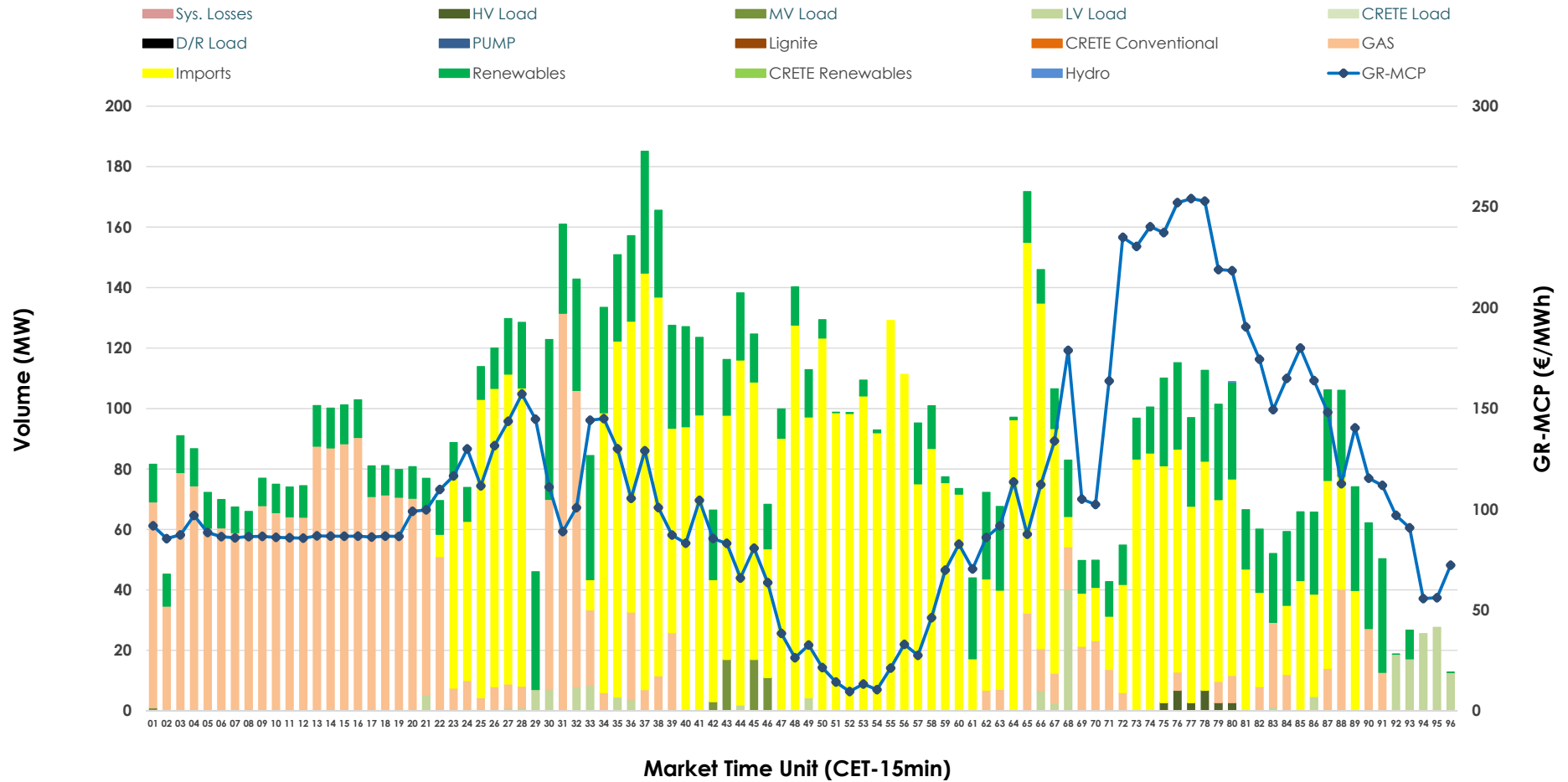


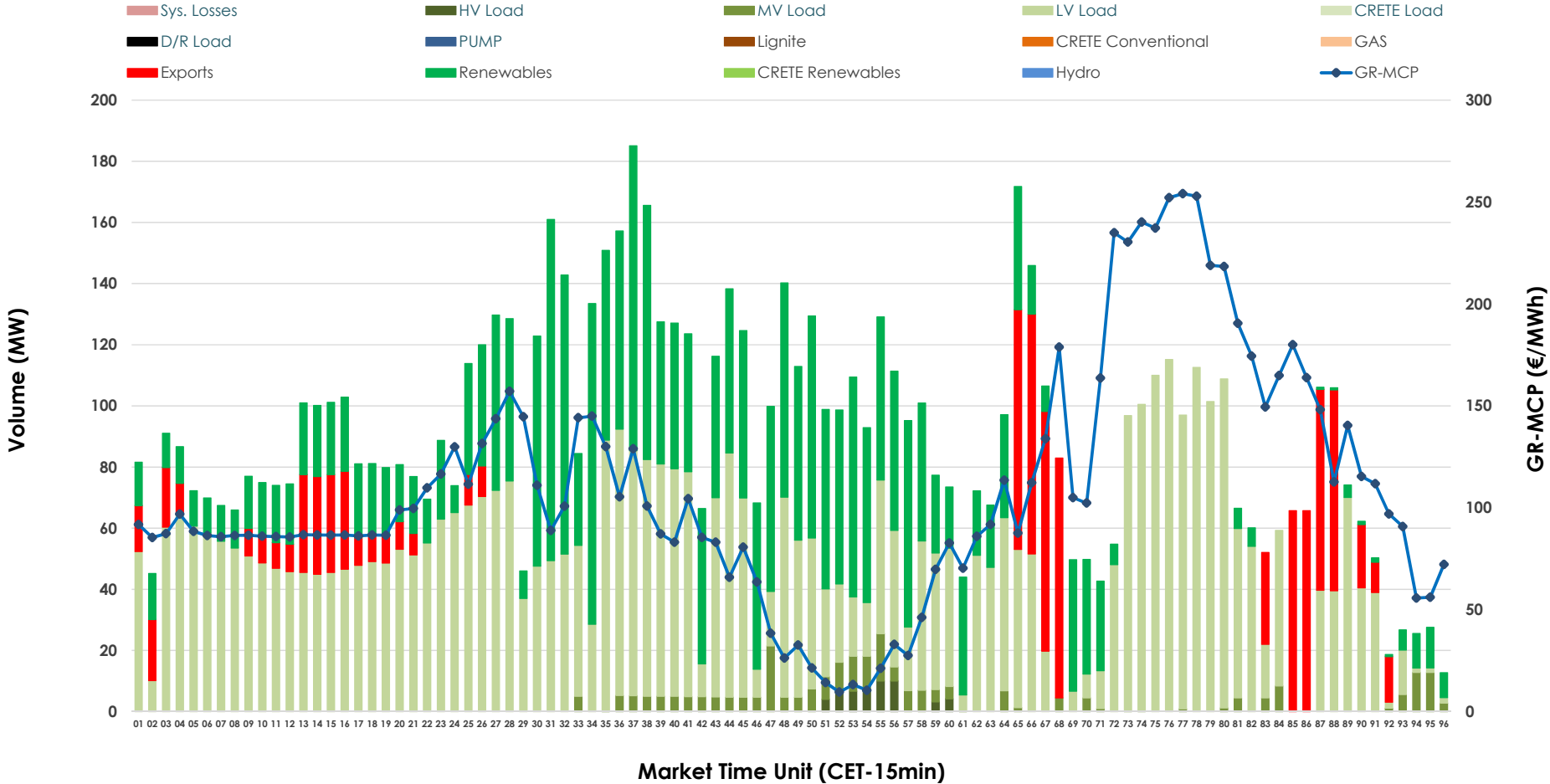


IDA '2' Market Outlook

03.03.2026 IDA '2' Market - Sell



03.03.2026 IDA '2' Market - Buy



GR Bidding Zone Weekly Figures

Delivery Day	25.02	26.02	27.02	28.02	01.03	02.03	03.03
	👇 -15%	👇 -4%	👆 25%	👇 -23%	👇 -31%	👆 130%	👆 35%
Avg.MCP (€/MWh)	54.61	52.41	65.67	50.54	35.08	80.72	109.02
Max.MCP (€/MWh)	155.01	130.70	148.51	105.45	115.24	256.35	254.11
Min.MCP (€/MWh)	-12.63	-35.00	-7.89	-20.07	-35.00	-29.06	9.57
	👇 -8%	👆 3%	👆 9%	👆 299%	👇 -73%	👆 6%	👇 -2%
Tot.Vol(GWh)	3.49	3.60	3.92	15.63	4.23	4.50	4.41

Trades by Order Type

Delivery Day		25.02	26.02	27.02	28.02	01.03	02.03	03.03	
Ord Price Type		Sell & Buy Trades in (GWh) per Price Type							(%)
PPT	(S)	0.000	0.000	0.000	0.000	0.000	0.000	0.000	0.00%
HBD	(S)	1.499	1.717	0.956	1.932	1.809	1.551	1.052	47.67%
BLK	(S)	0.000	0.000	0.000	0.000	0.000	0.000	0.000	0.00%
CPL	(S)	0.244	0.083	1.004	5.884	0.309	0.697	1.155	52.33%
PPT	(B)	0.000	0.000	0.000	0.000	0.000	0.000	0.000	0.00%
HBD	(B)	1.471	1.682	1.863	7.476	1.518	1.866	1.971	89.32%
BLK	(B)	0.000	0.000	0.000	0.000	0.000	0.000	0.000	0.00%
CPL	(B)	0.273	0.117	0.097	0.340	0.599	0.383	0.236	10.68%
		Sell & Buy Orders Traded per Price Type							(%)
PPT	(S)	0	0	0	0	0	0	0	0.00%
HBD	(S)	268	254	213	205	253	221	261	100.00%
BLK	(S)	0	0	0	0	0	0	0	0.00%
PPT	(B)	0	0	0	0	0	0	0	0.00%
HBD	(B)	415	474	492	261	361	480	630	100.00%
BLK	(B)	0	0	0	0	0	0	0	0.00%

- MCP** Market Clearing Price (€/MWh)
- PPT** Priority Price-Taking
- HBD** Hybrid
- BLK** Block
- CPL** Market Coupling Flow

Trade's Volume Mix

	Sell - MWh	Buy - MWh	
Lignite (0.0%)	0	0	(0.0%)
Crete Conv. (0.0%)	0	0	(0.0%)
Gas (25.6%)	565	0	(0.0%)
Hydro (0.0%)	0	0	(0.0%)
Imports (52.3%)	1,155		
RES (18.9%)	417	715	(32.4%)
Crete RES (0.0%)	0	0	(0.0%)
HV Load (0.3%)	6	13	(0.6%)
MV Load (0.6%)	12	63	(2.9%)
LV Load (2.4%)	52	1,180	(53.5%)
Crete Load (0.0%)	0	0	(0.0%)
Pumping (0.0%)	0	0	(0.0%)
Exports		236	(10.7%)
Sys.Losses (0.0%)	0	0	(0.0%)
D/R Load (0.0%)	0	0	(0.0%)

