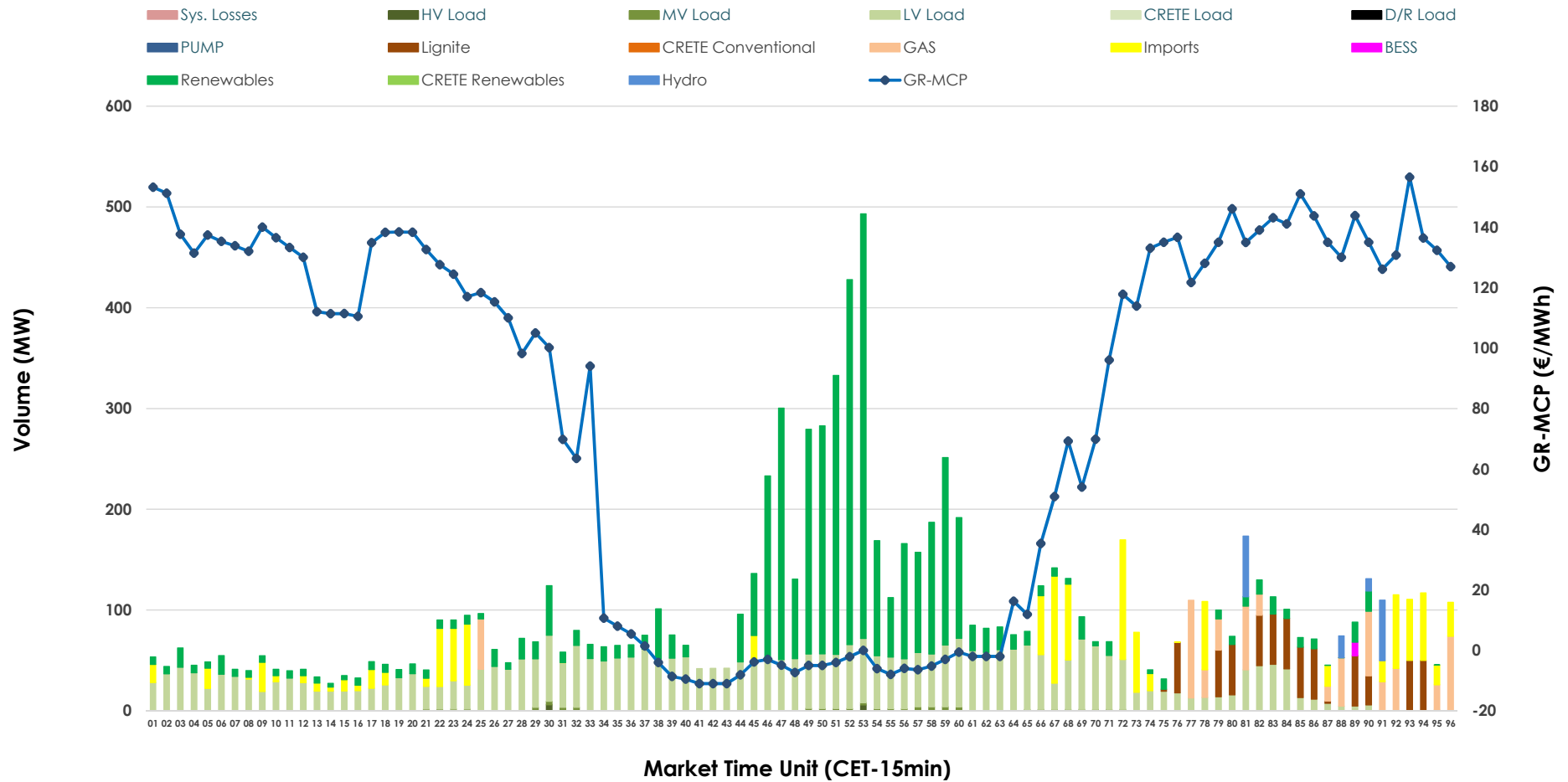


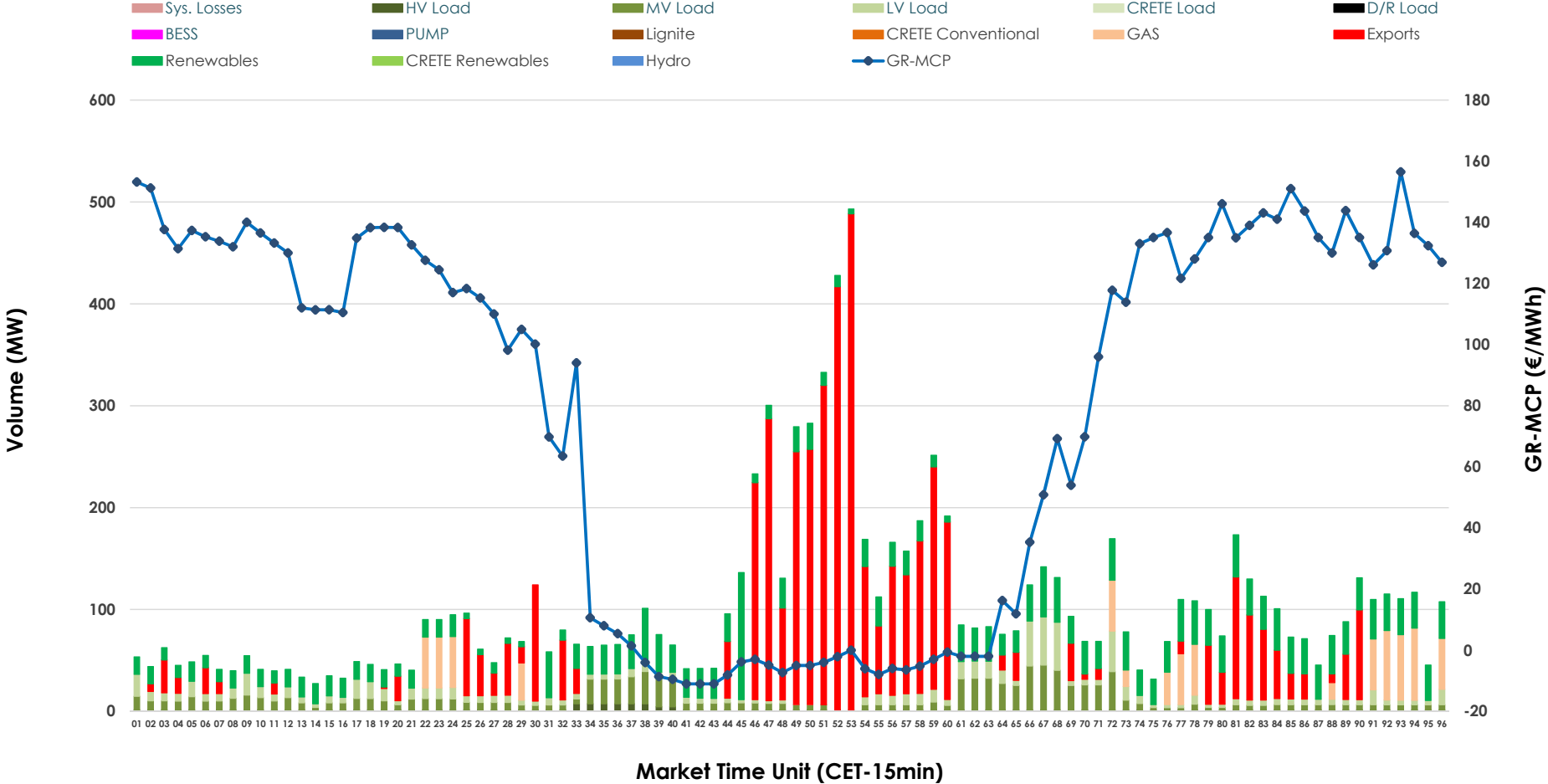


# IDA '1' Market Outlook

06.06.2026 IDA '1' Market - Sell



### 06.06.2026 IDA '1' Market - Buy



### GR Bidding Zone Weekly Figures

Delivery Day	31.05	01.06	02.06	03.06	04.06	05.06	06.06
	👇 -4%	👆 13%	👇 -2%	👇 -12%	👆 4%	👆 31%	👇 -30%
<b>Avg.MCP (€/MWh)</b>	85.50	96.84	95.04	83.58	86.77	114.04	80.04
<b>Max.MCP (€/MWh)</b>	159.21	184.62	173.10	154.37	219.59	187.06	156.50
<b>Min.MCP (€/MWh)</b>	-2.01	-5.61	-9.72	-10.09	1.23	29.00	-11.00
	👆 22%	👇 -4%	👇 -27%	👆 23%	👇 -34%	👆 23%	👆 15%
<b>Tot.Vol(GWh)</b>	6.19	5.96	4.35	5.34	3.50	4.29	4.93

### Trades by Order Type

Delivery Day		31.05	01.06	02.06	03.06	04.06	05.06	06.06	
<b>Ord Price Type</b>		<b>Sell &amp; Buy Trades in (GWh) per Price Type</b>							<b>(%)</b>
<b>PPT</b>	(S)	0.000	0.000	0.000	0.000	0.000	0.000	0.000	0.00%
<b>HBD</b>	(S)	1.792	2.320	1.893	2.333	0.551	1.285	2.180	88.40%
<b>BLK</b>	(S)	0.000	0.000	0.000	0.000	0.000	0.000	0.000	0.00%
<b>CPL</b>	(S)	1.305	0.658	0.280	0.338	1.200	0.862	0.286	11.60%
<b>PPT</b>	(B)	0.000	0.000	0.000	0.000	0.000	0.000	0.000	0.00%
<b>HBD</b>	(B)	2.374	2.610	1.808	1.998	1.626	1.655	1.325	53.70%
<b>BLK</b>	(B)	0.000	0.000	0.000	0.000	0.000	0.000	0.000	0.00%
<b>CPL</b>	(B)	0.722	0.367	0.365	0.673	0.125	0.492	1.142	46.30%
		<b>Sell &amp; Buy Orders Traded per Price Type</b>							<b>(%)</b>
<b>PPT</b>	(S)	0	0	0	0	0	0	0	0.00%
<b>HBD</b>	(S)	243	201	123	466	216	208	209	100.00%
<b>BLK</b>	(S)	0	0	0	0	0	0	0	0.00%
<b>PPT</b>	(B)	0	0	0	0	0	0	0	0.00%
<b>HBD</b>	(B)	950	707	870	1055	850	889	797	100.00%
<b>BLK</b>	(B)	0	0	0	0	0	0	0	0.00%

- MCP** Market Clearing Price (€/MWh)
- PPT** Priority Price-Taking
- HBD** Hybrid
- BLK** Block
- CPL** Market Coupling Flow

### Trade's Volume Mix

		Sell - MWh		Buy - MWh	
<b>Lignite</b>	(5.9%)	145	0	0	(0.0%)
<b>Crete Conv.</b>	(0.0%)	0	0	0	(0.0%)
<b>Gas</b>	(5.9%)	147	176	0	(7.1%)
<b>Hydro</b>	(1.6%)	38	0	0	(0.0%)
<b>Imports</b>	(11.6%)	286	0	0	(0.0%)
<b>RES</b>	(37.9%)	935	621	621	(25.2%)
<b>Crete RES</b>	(0.0%)	0	0	0	(0.0%)
<b>BESS</b>	(0.1%)	3	0	0	(0.0%)
<b>HV Load</b>	(0.1%)	3	47	47	(1.9%)
<b>MV Load</b>	(0.7%)	17	266	266	(10.8%)
<b>LV Load</b>	(36.2%)	892	215	215	(8.7%)
<b>Crete Load</b>	(0.0%)	0	0	0	(0.0%)
<b>Pumping</b>	(0.0%)	0	0	0	(0.0%)
<b>Exports</b>		0	1,142	1,142	(46.3%)
<b>Sys.Losses</b>	(0.0%)	0	0	0	(0.0%)
<b>D/R Load</b>	(0.0%)	0	0	0	(0.0%)

