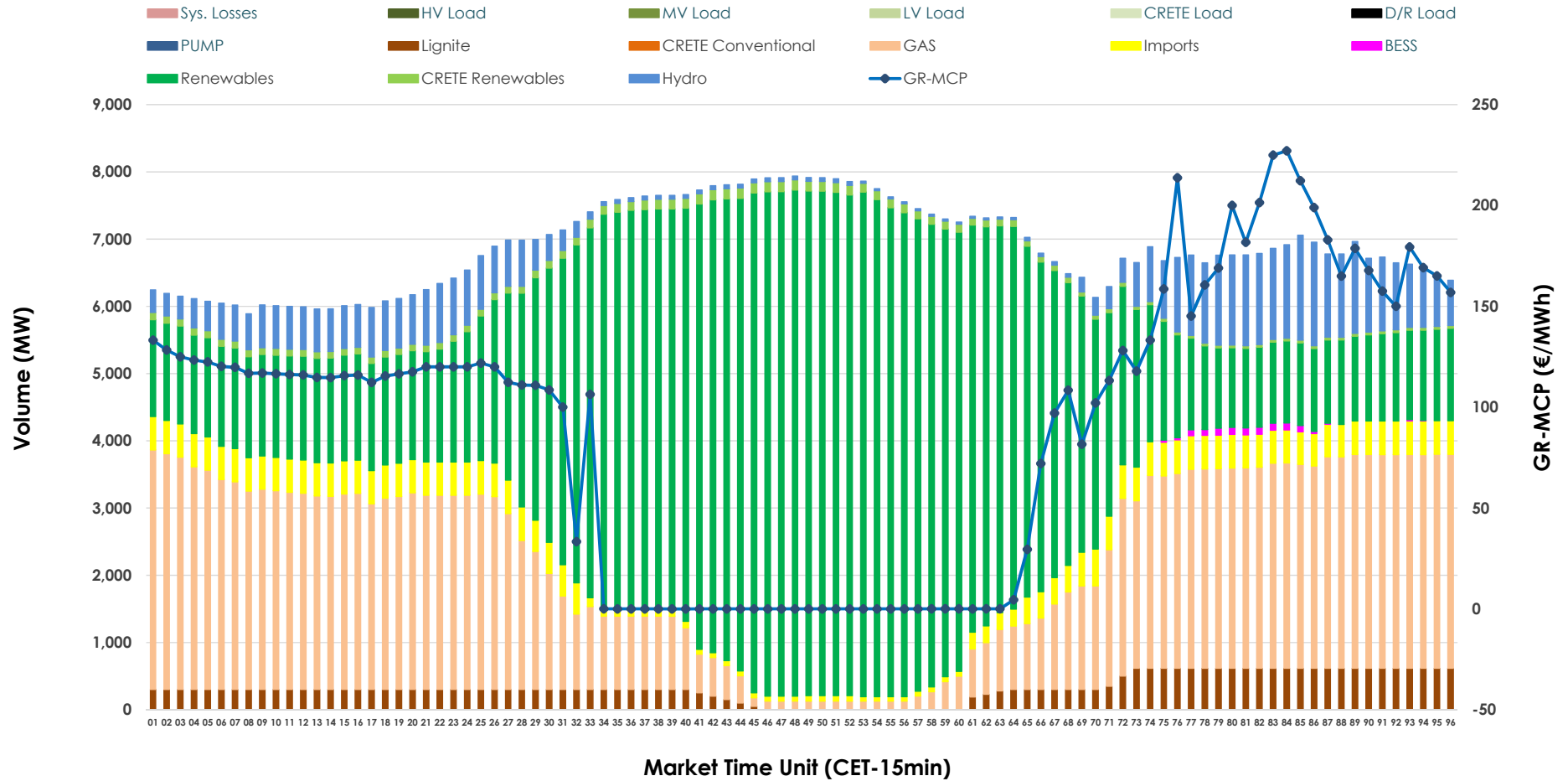


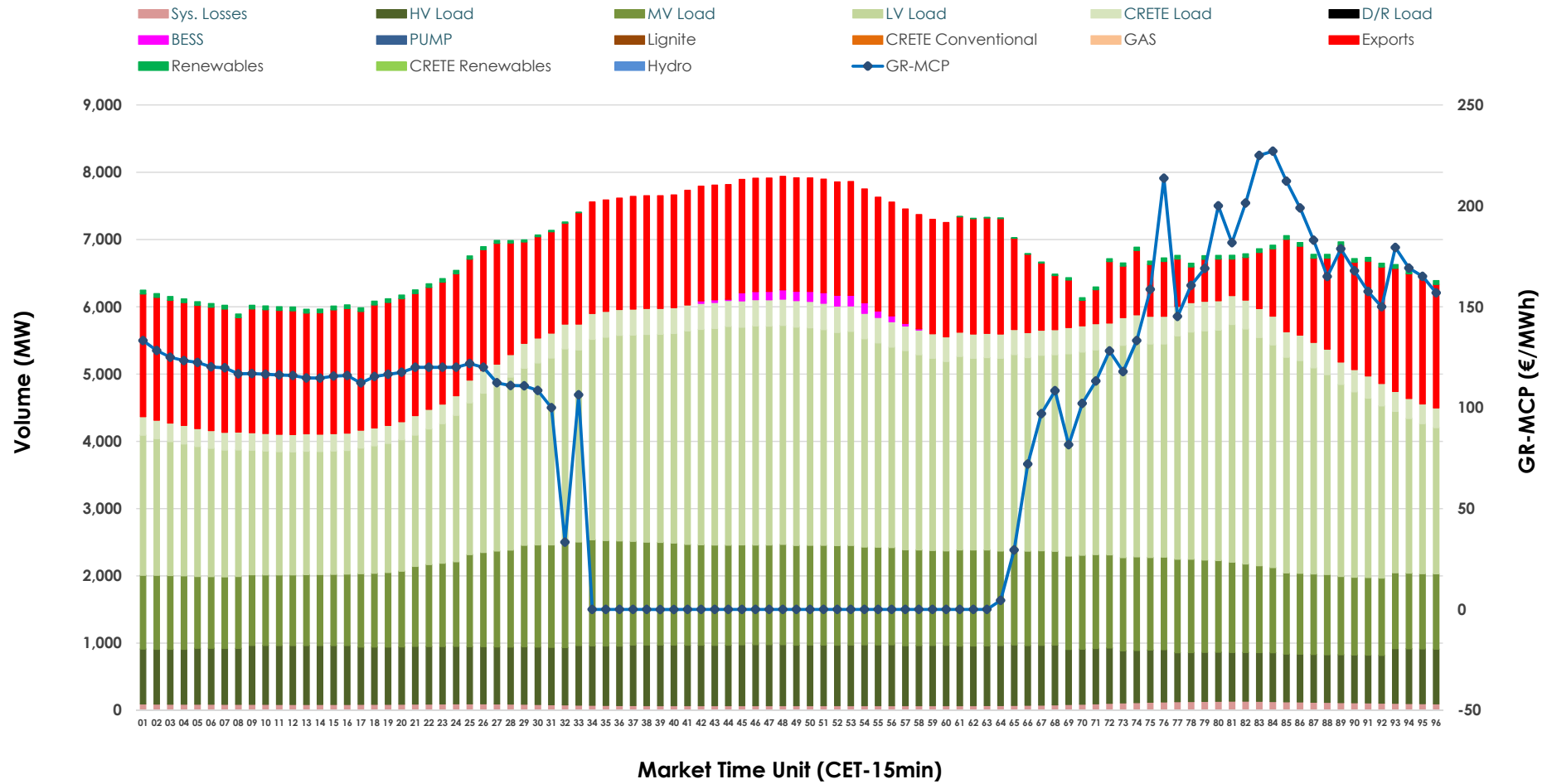


Day-Ahead Market Outlook

21.05.2026 Day-Ahead Market - Sell



21.05.2026 Day-Ahead Market - Buy



GR Bidding Zone Weekly Figures

Delivery Day	15.05	16.05	17.05	18.05	19.05	20.05	21.05
	👇 -3%	👇 -15%	👇 -4%	👆 32%	👆 30%	👇 -48%	👆 35%
Avg.MCP (€/MWh)	91.65	78.36	75.20	99.62	129.48	67.26	90.99
Max.MCP (€/MWh)	170.33	136.89	168.83	257.62	233.28	209.51	227.11
Min.MCP (€/MWh)	0.00	0.02	-1.01	0.00	75.00	-0.10	-0.01
	👇 -2%	👇 -10%	👆 1%	👆 8%	👇 -3%	👆 5%	👇 -2%
Tot.Vol(GWh)	335.47	303.35	306.87	331.83	320.85	336.14	330.85

Trades by Order Type

Delivery Day		15.05	16.05	17.05	18.05	19.05	20.05	21.05	
Ord Price Type		Sell & Buy Trades in (GWh) per Price Type							(%)
PPT	(S)	68.237	63.469	71.721	64.313	59.800	73.927	63.567	38.43%
HBD	(S)	72.381	66.338	64.208	71.127	71.266	68.471	73.459	44.41%
BLK	(S)	27.116	21.857	17.507	30.478	28.557	25.673	28.387	17.16%
CPL	(S)	0.000	0.013	0.000	0.000	0.803	0.000	0.012	0.01%
PPT	(B)	16.044	14.299	13.770	14.491	14.694	14.511	14.705	8.89%
HBD	(B)	125.379	121.066	111.681	121.731	124.344	126.040	125.382	75.79%
BLK	(B)	0.000	0.000	0.000	0.000	0.000	0.000	0.000	0.00%
CPL	(B)	26.310	16.311	27.985	29.695	21.389	27.520	25.339	15.32%
		Sell & Buy Orders Traded per Price Type							(%)
PPT	(S)	1720	1725	1722	1768	1646	1694	1687	33.42%
HBD	(S)	3324	3475	2870	3267	3835	3156	3352	66.40%
BLK	(S)	8	8	11	10	8	8	9	0.18%
PPT	(B)	2357	2402	2387	2317	2417	2307	2317	37.54%
HBD	(B)	4036	3969	3918	3696	3805	3990	3855	62.46%
BLK	(B)	0	0	0	0	0	0	0	0.00%

- MCP** Market Clearing Price (€/MWh)
- PPT** Priority Price-Taking
- HBD** Hybrid
- BLK** Block
- CPL** Market Coupling Flow

Trade's Volume Mix

		Sell - MWh	Buy - MWh	
Lignite	(4.7%)	7,821	0	(0.0%)
Crete Conv.	(0.0%)	0	0	(0.0%)
Gas	(29.0%)	47,963	0	(0.0%)
Hydro	(7.5%)	12,357	0	(0.0%)
Imports	(5.2%)	8,654		
RES	(52.0%)	86,096	761	(0.5%)
Crete RES	(1.4%)	2,276	0	(0.0%)
BESS	(0.2%)	258	439	(0.3%)
HV Load	(0.0%)	0	20,160	(12.2%)
MV Load	(0.0%)	0	31,731	(19.2%)
LV Load	(0.0%)	0	65,264	(39.5%)
Crete Load	(0.0%)	0	8,422	(5.1%)
Pumping	(0.0%)	0	0	(0.0%)
Exports			36,448	(22.0%)
Sys.Losses	(0.0%)	0	2,202	(1.3%)
D/R Load	(0.0%)	0	0	(0.0%)

