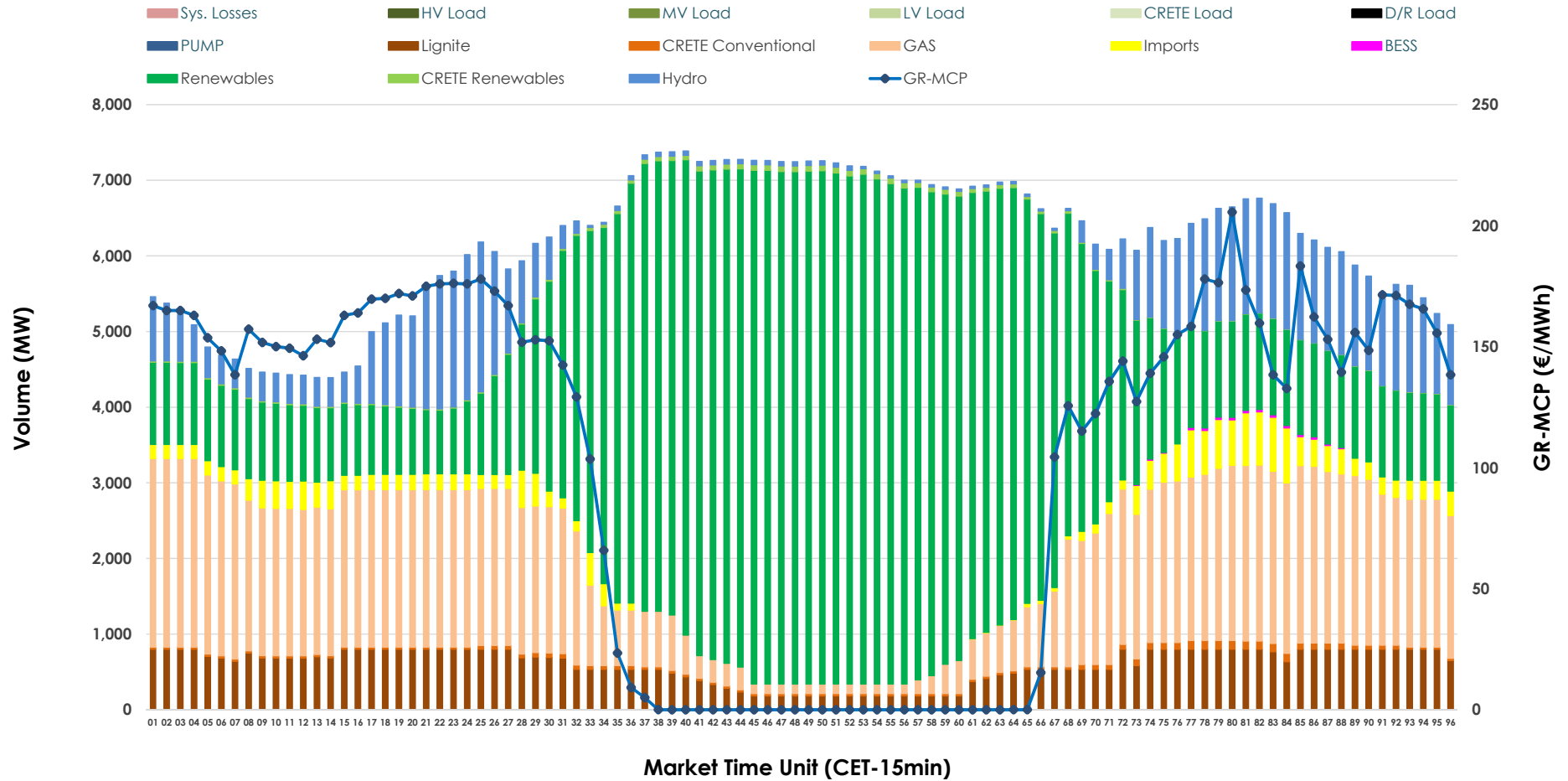


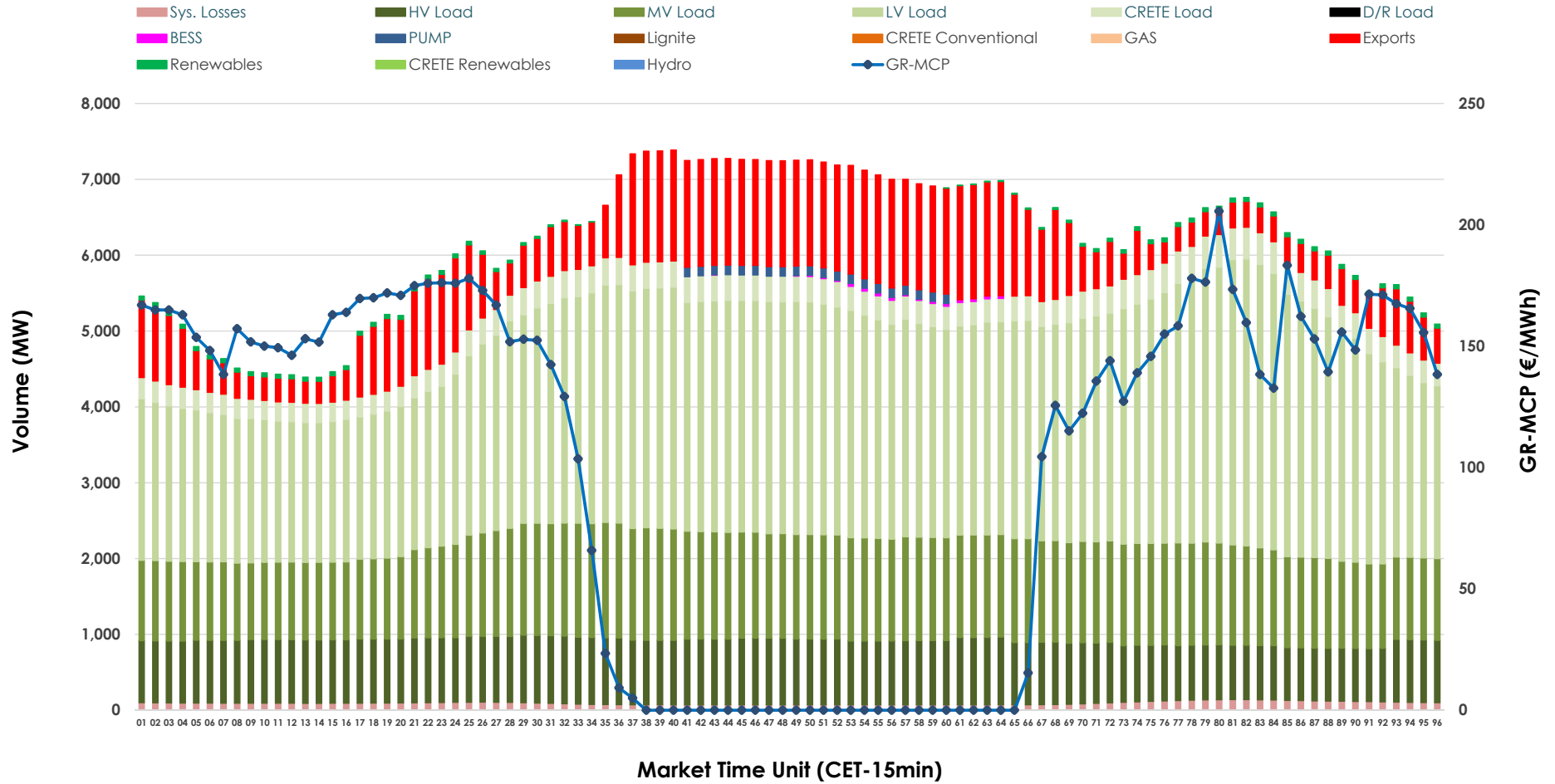


Day-Ahead Market Outlook

06.05.2026 Day-Ahead Market - Sell



06.05.2026 Day-Ahead Market - Buy



GR Bidding Zone Weekly Figures

Delivery Day	30.04	01.05	02.05	03.05	04.05	05.05	06.05
	👇 -11%	👇 -37%	👉 13%	👉 11%	👆 45%	👉 0%	👉 4%
Avg.MCP (€/MWh)	86.43	54.50	61.40	68.20	98.94	98.73	103.01
Max.MCP (€/MWh)	213.40	120.80	182.68	172.97	263.41	257.05	205.60
Min.MCP (€/MWh)	0.01	0.00	-5.00	-10.25	-0.10	-0.01	0.00
	👇 -2%	👉 5%	👉 4%	👇 -2%	👉 4%	👇 -1%	👇 -3%
Tot.Vol(GWh)	280.87	294.18	304.64	299.12	311.19	307.32	296.65

Trades by Order Type

Delivery Day		30.04	01.05	02.05	03.05	04.05	05.05	06.05	
Ord Price Type		Sell & Buy Trades in (GWh) per Price Type							(%)
PPT	(S)	49.397	70.948	77.082	71.520	59.921	56.144	52.370	35.31%
HBD	(S)	60.205	66.512	65.566	64.433	73.103	67.017	69.505	46.86%
BLK	(S)	23.319	9.630	9.306	13.409	21.897	29.691	25.317	17.07%
CPL	(S)	7.514	0.000	0.367	0.197	0.675	0.807	1.136	0.77%
PPT	(B)	12.191	13.282	14.496	13.234	15.057	14.815	15.325	10.33%
HBD	(B)	121.751	114.864	118.407	117.163	128.647	126.916	124.454	83.91%
BLK	(B)	0.000	0.000	0.000	0.000	0.000	0.000	0.000	0.00%
CPL	(B)	6.492	18.943	19.418	19.161	11.892	11.928	8.547	5.76%
		Sell & Buy Orders Traded per Price Type							(%)
PPT	(S)	1674	1559	1484	1518	1552	1728	1667	32.65%
HBD	(S)	3352	2875	2577	2646	3146	3211	3430	67.18%
BLK	(S)	9	9	8	9	13	10	9	0.18%
PPT	(B)	2265	2294	2263	2266	2308	2296	2317	36.99%
HBD	(B)	4187	4191	3891	3942	4037	4157	3947	63.01%
BLK	(B)	0	0	0	0	0	0	0	0.00%

- MCP** Market Clearing Price (€/MWh)
- PPT** Priority Price-Taking
- HBD** Hybrid
- BLK** Block
- CPL** Market Coupling Flow

Trade's Volume Mix

	Sell - MWh	Buy - MWh	
Lignite (9.6%)	14,232	0	(0.0%)
Crete Conv. (0.8%)	1,136	0	(0.0%)
Gas (24.1%)	35,753	0	(0.0%)
Hydro (10.3%)	15,319	0	(0.0%)
Imports (3.3%)	4,931		
RES (51.3%)	76,126	777	(0.5%)
Crete RES (0.5%)	732	0	(0.0%)
BESS (0.1%)	97	115	(0.1%)
HV Load (0.0%)	0	19,738	(13.3%)
MV Load (0.0%)	0	30,578	(20.6%)
LV Load (0.0%)	0	65,879	(44.4%)
Crete Load (0.0%)	0	7,899	(5.3%)
Pumping (0.0%)	0	625	(0.4%)
Exports		20,493	(13.8%)
Sys.Losses (0.0%)	0	2,222	(1.5%)
D/R Load (0.0%)	0	0	(0.0%)

