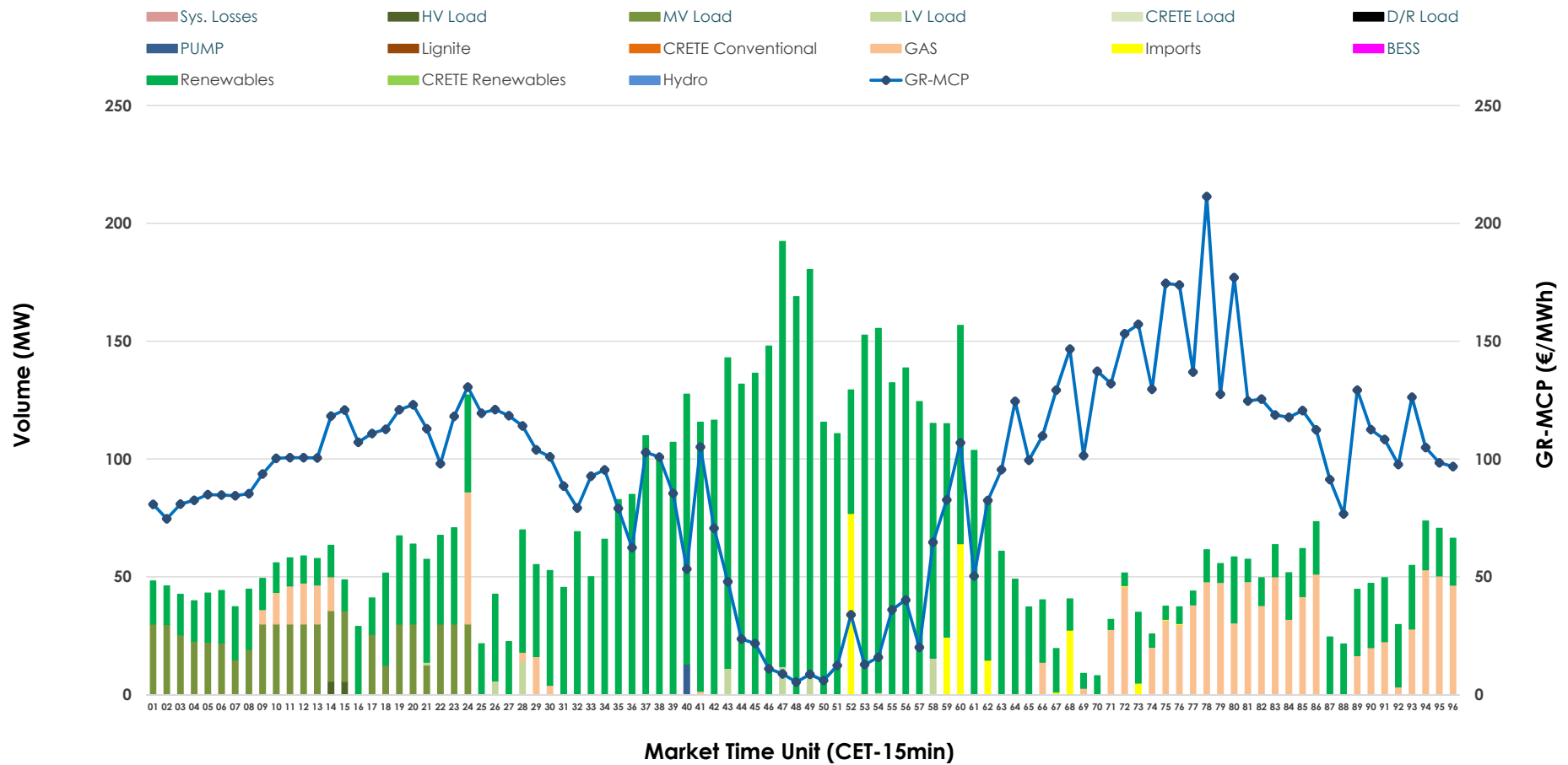


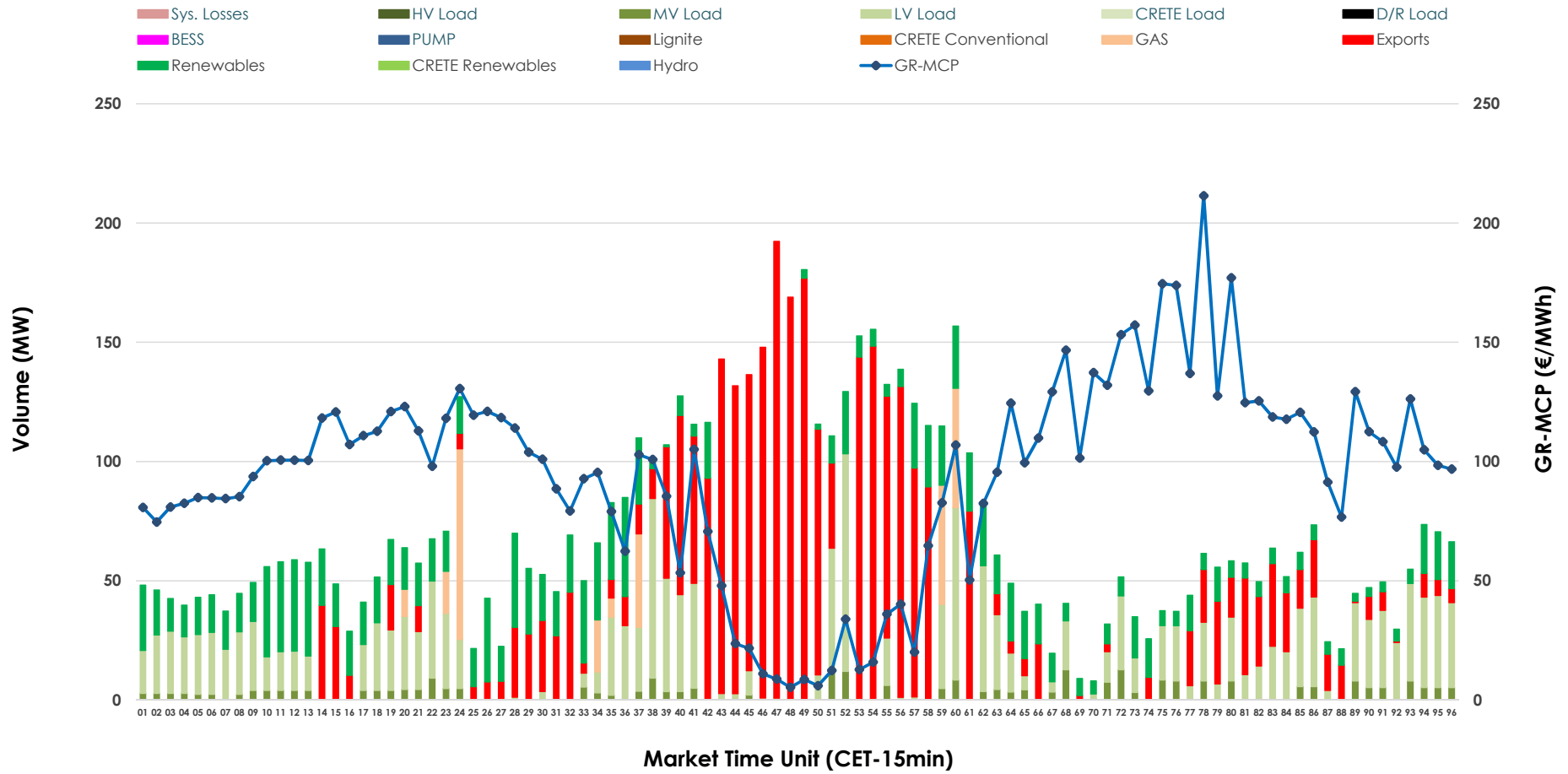


IDA '2' Market Outlook

19.03.2026 IDA '2' Market - Sell



19.03.2026 IDA '2' Market - Buy



GR Bidding Zone Weekly Figures

Delivery Day	13.03	14.03	15.03	16.03	17.03	18.03	19.03
	👇 -30%	👈 7%	👇 -6%	👈 34%	👈 11%	👇 -31%	👈 17%
Avg.MCP (€/MWh)	77.52	83.21	78.46	104.89	116.34	80.64	94.68
Max.MCP (€/MWh)	202.79	177.47	172.20	197.06	193.25	148.43	211.38
Min.MCP (€/MWh)	-24.50	-20.66	-21.83	28.53	60.40	-10.62	5.30
	👈 68%	👇 -25%	👈 30%	👇 -17%	👇 -27%	👈 2%	👇 -9%
Tot.Vol(GWh)	6.41	4.78	6.22	5.17	3.75	3.81	3.46

Trades by Order Type

Delivery Day		13.03	14.03	15.03	16.03	17.03	18.03	19.03	
Ord Price Type		Sell & Buy Trades in (GWh) per Price Type							(%)
PPT	(S)	0.000	0.000	0.000	0.000	0.000	0.000	0.000	0.00%
HBD	(S)	3.108	1.681	1.893	1.823	1.679	0.962	1.678	96.90%
BLK	(S)	0.000	0.000	0.000	0.000	0.000	0.000	0.000	0.00%
CPL	(S)	0.097	0.711	1.216	0.761	0.194	0.942	0.054	3.10%
PPT	(B)	0.000	0.000	0.000	0.000	0.000	0.000	0.000	0.00%
HBD	(B)	1.311	2.145	2.551	1.583	1.440	1.798	0.974	56.26%
BLK	(B)	0.000	0.000	0.000	0.000	0.000	0.000	0.000	0.00%
CPL	(B)	1.894	0.246	0.559	1.001	0.434	0.106	0.758	43.74%
		Sell & Buy Orders Traded per Price Type							(%)
PPT	(S)	0	0	0	0	0	0	0	0.00%
HBD	(S)	287	277	292	391	427	207	324	100.00%
BLK	(S)	0	0	0	0	0	0	0	0.00%
PPT	(B)	0	0	0	0	0	0	0	0.00%
HBD	(B)	286	376	577	341	584	550	435	100.00%
BLK	(B)	0	0	0	0	0	0	0	0.00%

MCP Market Clearing Price (€/MWh)
PPT Priority Price-Taking
HBD Hybrid
BLK Block
CPL Market Coupling Flow

Trade's Volume Mix

	Sell - MWh	Buy - MWh	
Lignite (0.0%)	0	0	(0.0%)
Crete Conv. (0.0%)	0	0	(0.0%)
Gas (14.5%)	251	70	(4.0%)
Hydro (0.0%)	0	0	(0.0%)
Imports (3.1%)	54		
RES (72.5%)	1,255	371	(21.4%)
Crete RES (0.0%)	0	0	(0.0%)
BESS (0.0%)	0	0	(0.0%)
HV Load (0.2%)	3	0	(0.0%)
MV Load (8.6%)	149	75	(4.3%)
LV Load (1.0%)	17	459	(26.5%)
Crete Load (0.0%)	0	0	(0.0%)
Pumping (0.2%)	3	0	(0.0%)
Exports		758	(43.7%)
Sys.Losses (0.0%)	0	0	(0.0%)
D/R Load (0.0%)	0	0	(0.0%)

