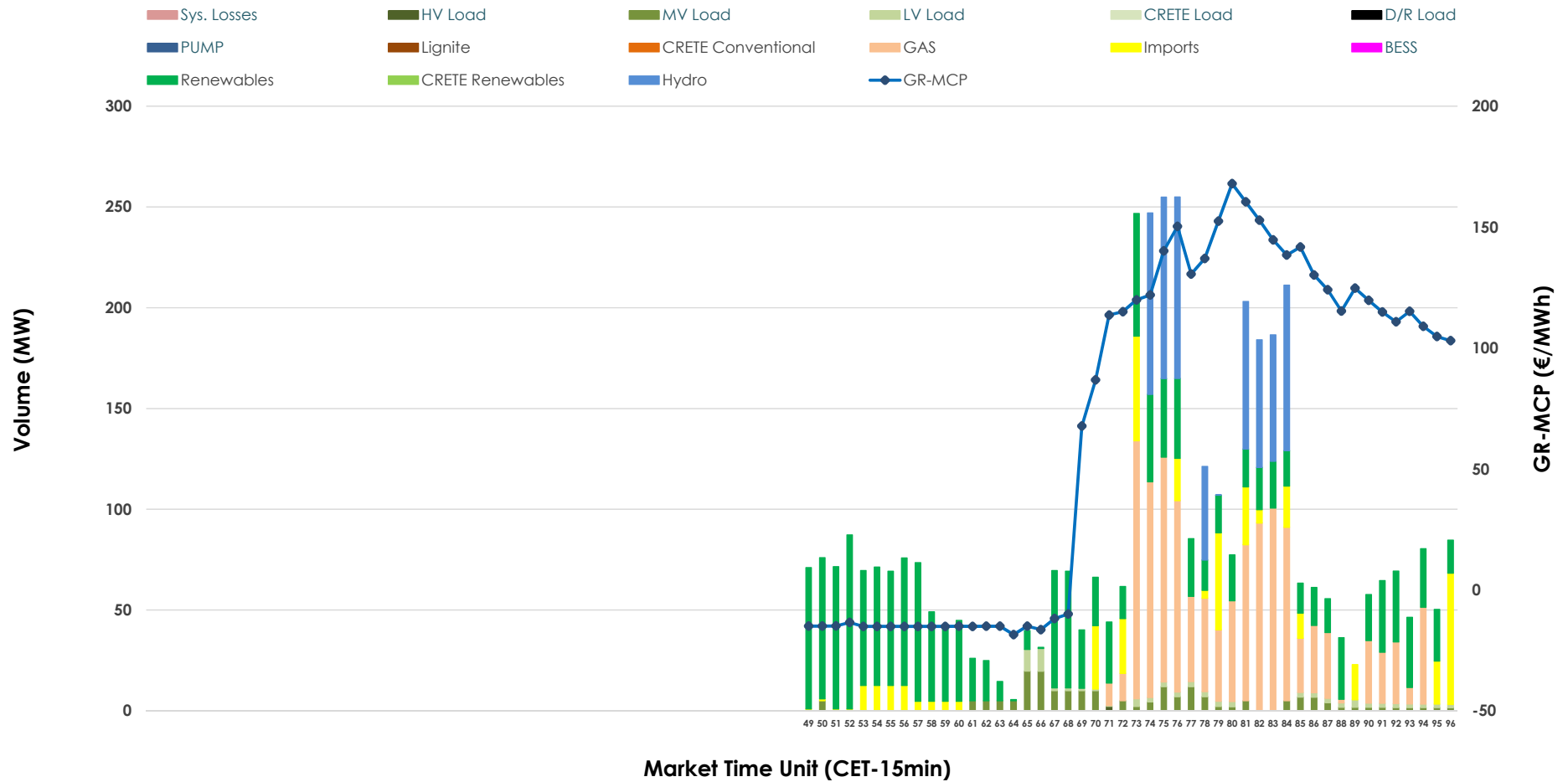


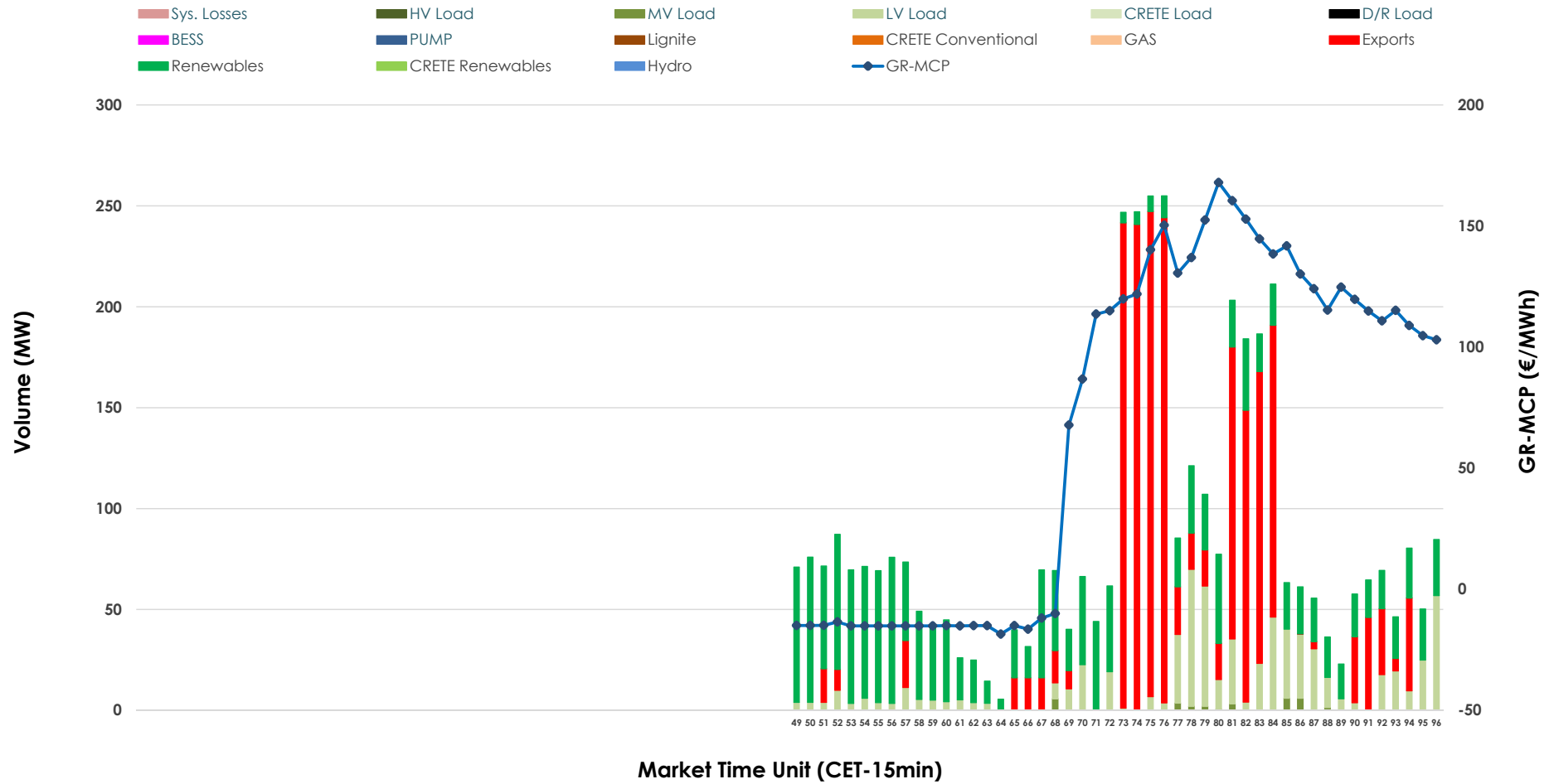


# IDA '3' Market Outlook

17.04.2026 IDA '3' Market - Sell



### 17.04.2026 IDA '3' Market - Buy



### GR Bidding Zone Weekly Figures

Delivery Day	11.04	12.04	13.04	14.04	15.04	16.04	17.04
	↗ 20%	↘ -18%	↗ 24%	↗ 40%	↘ -10%	↘ -29%	↘ -27%
<b>Avg.MCP (€/MWh)</b>	99.89	81.48	101.24	141.87	128.24	91.53	67.04
<b>Max.MCP (€/MWh)</b>	176.97	162.05	170.39	267.95	175.20	206.60	167.98
<b>Min.MCP (€/MWh)</b>	24.04	-1.89	4.68	79.90	84.00	11.22	-18.48
	↗ 27%	↘ -61%	↗ 7%	↗ 3%	↗ 200%	↘ -39%	↘ -32%
<b>Tot.Vol(GWh)</b>	3.89	1.52	1.63	1.67	5.00	3.05	2.08

### Trades by Order Type

Delivery Day		11.04	12.04	13.04	14.04	15.04	16.04	17.04	
Ord Price Type		Sell & Buy Trades in (GWh) per Price Type							(%)
<b>PPT</b>	(S)	0.000	0.000	0.000	0.000	0.000	0.000	0.000	0.00%
<b>HBD</b>	(S)	0.419	0.568	0.675	0.587	0.184	0.399	0.935	89.73%
<b>BLK</b>	(S)	0.000	0.000	0.000	0.000	0.000	0.000	0.000	0.00%
<b>CPL</b>	(S)	1.528	0.193	0.139	0.248	2.318	1.128	0.107	10.27%
<b>PPT</b>	(B)	0.000	0.000	0.000	0.000	0.000	0.000	0.000	0.00%
<b>HBD</b>	(B)	1.885	0.426	0.551	0.280	2.194	1.261	0.565	54.22%
<b>BLK</b>	(B)	0.000	0.000	0.000	0.000	0.000	0.000	0.000	0.00%
<b>CPL</b>	(B)	0.062	0.335	0.263	0.554	0.308	0.265	0.477	45.78%
		Sell & Buy Orders Traded per Price Type							(%)
<b>PPT</b>	(S)	0	0	0	0	0	0	0	0.00%
<b>HBD</b>	(S)	161	209	116	265	111	185	172	100.00%
<b>BLK</b>	(S)	0	0	0	0	0	0	0	0.00%
<b>PPT</b>	(B)	0	0	0	0	0	0	0	0.00%
<b>HBD</b>	(B)	347	172	186	134	522	525	196	100.00%
<b>BLK</b>	(B)	0	0	0	0	0	0	0	0.00%

- MCP** Market Clearing Price (€/MWh)
- PPT** Priority Price-Taking
- HBD** Hybrid
- BLK** Block
- CPL** Market Coupling Flow

### Trade's Volume Mix

	Sell - MWh	Buy - MWh	
<b>Lignite</b> (0.0%)	0	0	(0.0%)
<b>Crete Conv.</b> (0.0%)	0	0	(0.0%)
<b>Gas</b> (29.7%)	309	0	(0.0%)
<b>Hydro</b> (14.3%)	149	0	(0.0%)
<b>Imports</b> (10.3%)	107		
<b>RES</b> (39.1%)	407	386	(37.1%)
<b>Crete RES</b> (0.0%)	0	0	(0.0%)
<b>BESS</b> (0.0%)	0	0	(0.0%)
<b>HV Load</b> (0.1%)	1	0	(0.0%)
<b>MV Load</b> (4.8%)	50	8	(0.8%)
<b>LV Load</b> (1.8%)	18	170	(16.3%)
<b>Crete Load</b> (0.0%)	0	0	(0.0%)
<b>Pumping</b> (0.0%)	0	0	(0.0%)
<b>Exports</b>		477	(45.8%)
<b>Sys.Losses</b> (0.0%)	0	0	(0.0%)
<b>D/R Load</b> (0.0%)	0	0	(0.0%)

