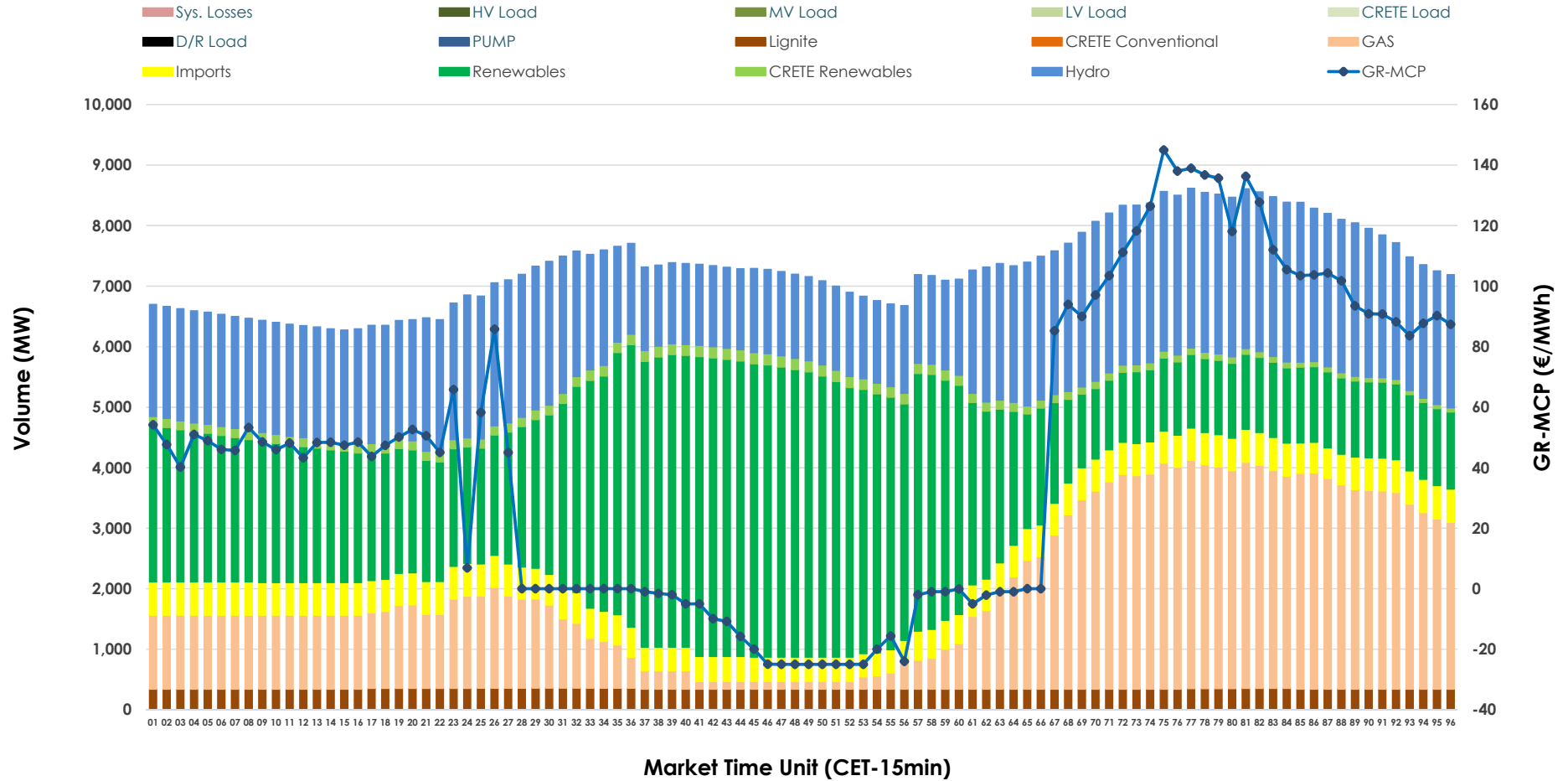


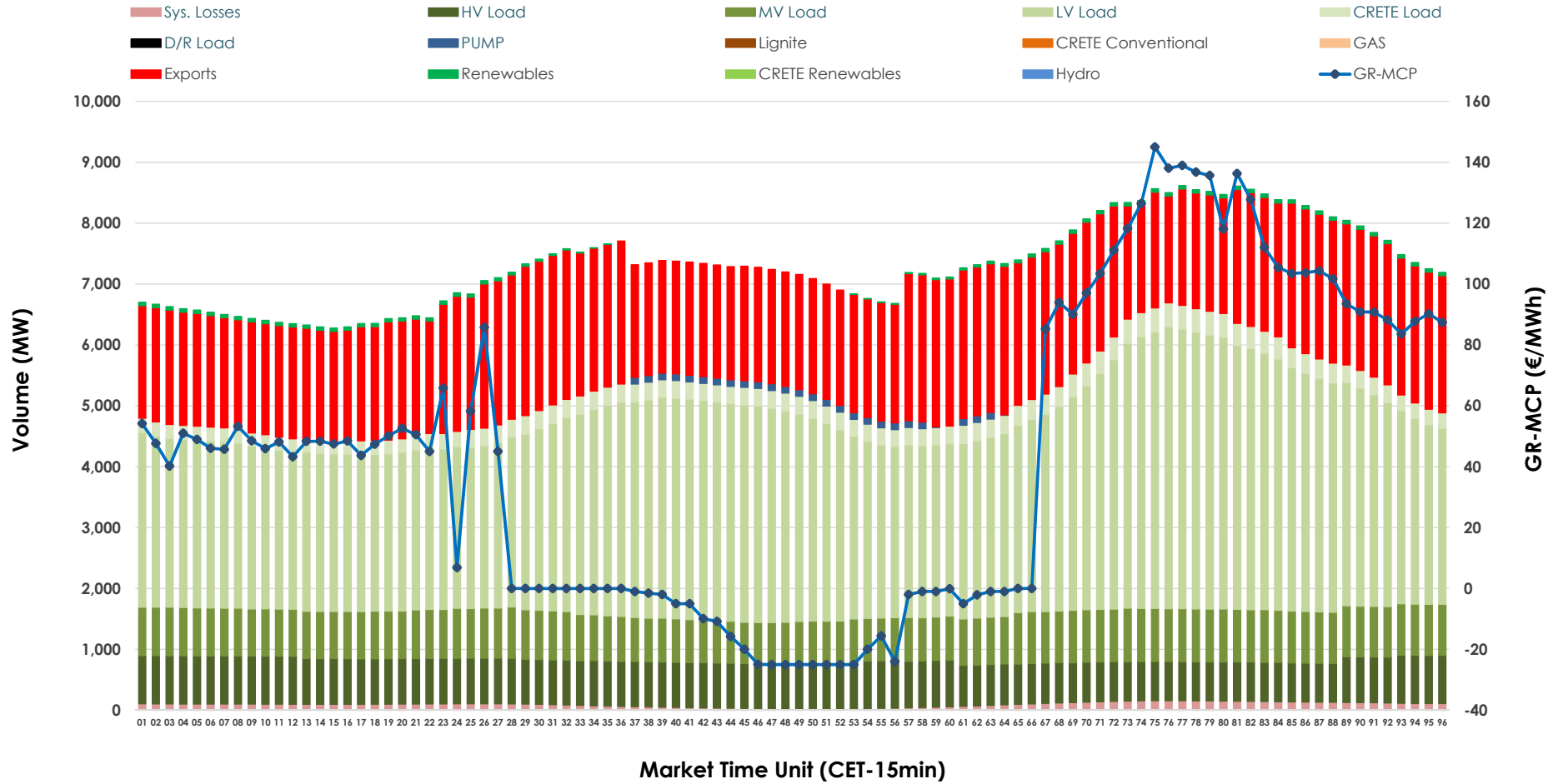


Day-Ahead Market Outlook

23.02.2026 Day-Ahead Market - Sell



23.02.2026 Day-Ahead Market - Buy



GR Bidding Zone Weekly Figures

Delivery Day	17.02	18.02	19.02	20.02	21.02	22.02	23.02
	👇 -20%	👇 -10%	👆 39%	👉 2%	👇 -14%	👇 -29%	👇 -3%
Avg.MCP (€/MWh)	57.80	52.05	72.50	74.11	63.81	45.14	43.94
Max.MCP (€/MWh)	152.38	173.32	161.66	132.36	116.58	106.14	145.00
Min.MCP (€/MWh)	0.00	-1.01	-0.01	0.01	0.01	-0.01	-25.00
	👉 9%	👉 0%	👇 -3%	👉 1%	👇 -14%	👉 4%	👇 -2%
Tot.Vol(GWh)	405.83	406.30	394.81	400.54	346.45	358.95	351.59

Trades by Order Type

Delivery Day		17.02	18.02	19.02	20.02	21.02	22.02	23.02	
Ord Price Type		Sell & Buy Trades in (GWh) per Price Type							(%)
PPT	(S)	116.187	116.225	114.204	119.604	103.858	111.881	112.438	63.96%
HBD	(S)	67.805	66.379	62.963	64.312	52.022	55.819	43.541	24.77%
BLK	(S)	14.780	20.466	19.776	16.349	16.689	11.773	19.815	11.27%
CPL	(S)	4.142	0.078	0.464	0.003	0.657	0.000	0.000	0.00%
PPT	(B)	12.318	13.438	12.892	13.052	12.898	12.126	12.390	7.05%
HBD	(B)	153.387	151.624	151.249	150.625	136.433	132.898	126.507	71.96%
BLK	(B)	0.000	0.000	0.000	0.000	0.000	0.000	0.000	0.00%
CPL	(B)	37.209	38.086	33.266	36.591	23.895	34.448	36.898	20.99%
		Sell & Buy Orders Traded per Price Type							(%)
PPT	(S)	2508	2477	2482	2516	2504	2419	2534	56.71%
HBD	(S)	2512	2390	2604	2585	2686	2282	1926	43.11%
BLK	(S)	6	11	11	7	7	6	8	0.18%
PPT	(B)	2323	2393	2332	2324	2300	2308	2215	33.90%
HBD	(B)	4233	4317	4024	4076	3968	4167	4319	66.10%
BLK	(B)	0	0	0	0	0	0	0	0.00%

MCP Market Clearing Price (€/MWh)
PPT Priority Price-Taking
HBD Hybrid
BLK Block
CPL Market Coupling Flow

Trade's Volume Mix

		Sell - MWh	Buy - MWh	
Lignite	(4.7%)	8,249	0	(0.0%)
Crete Conv.	(0.0%)	0	0	(0.0%)
Gas	(23.1%)	40,527	0	(0.0%)
Hydro	(27.7%)	48,657	0	(0.0%)
Imports	(6.8%)	12,038		
RES	(35.8%)	62,904	921	(0.5%)
Crete RES	(1.9%)	3,419	0	(0.0%)
HV Load	(0.0%)	0	17,444	(9.9%)
MV Load	(0.0%)	0	18,909	(10.8%)
LV Load	(0.0%)	0	78,480	(44.6%)
Crete Load	(0.0%)	0	6,991	(4.0%)
Pumping	(0.0%)	0	693	(0.4%)
Exports			50,107	(28.5%)
Sys.Losses	(0.0%)	0	2,249	(1.3%)
D/R Load	(0.0%)	0	0	(0.0%)

