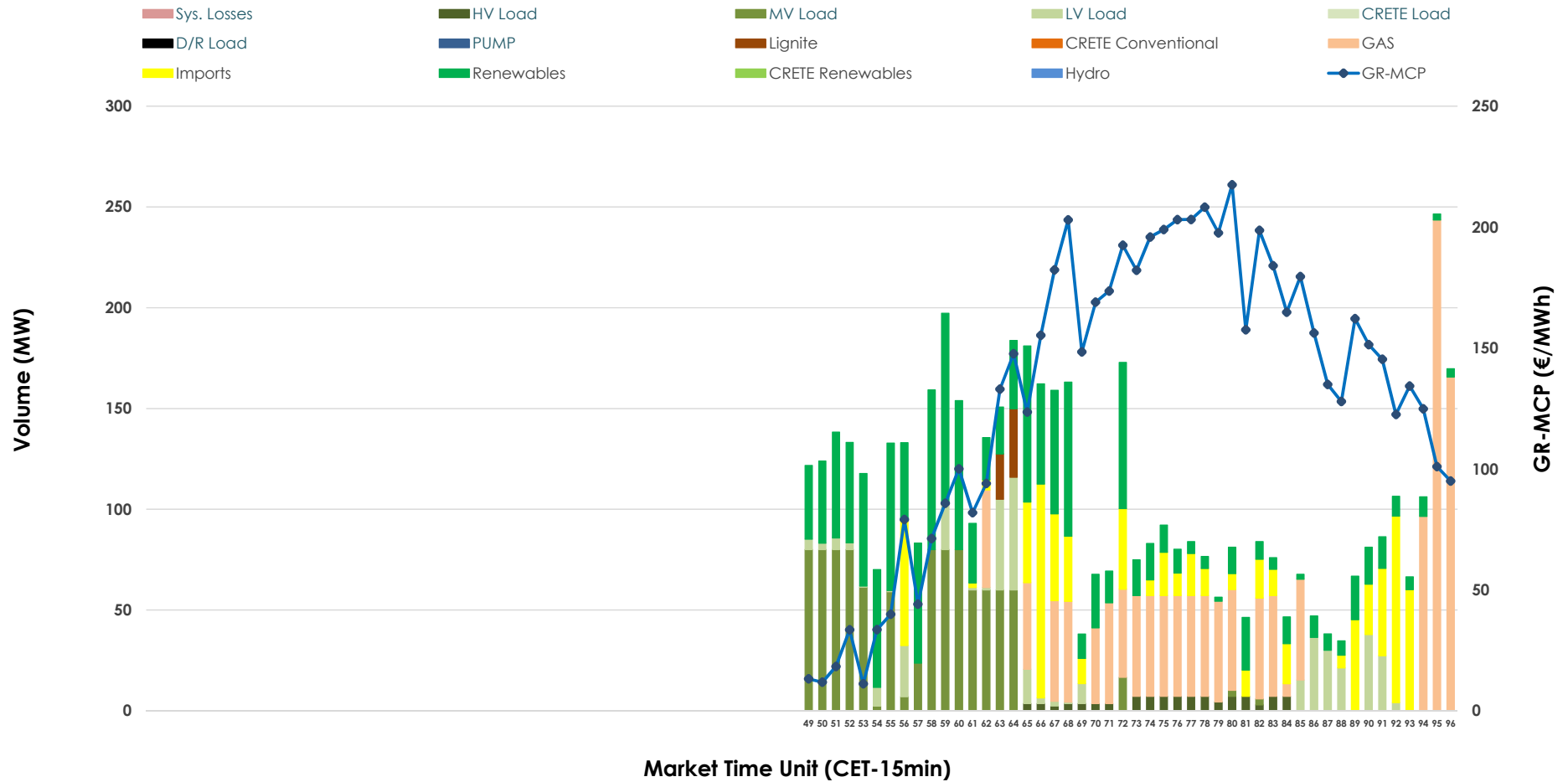


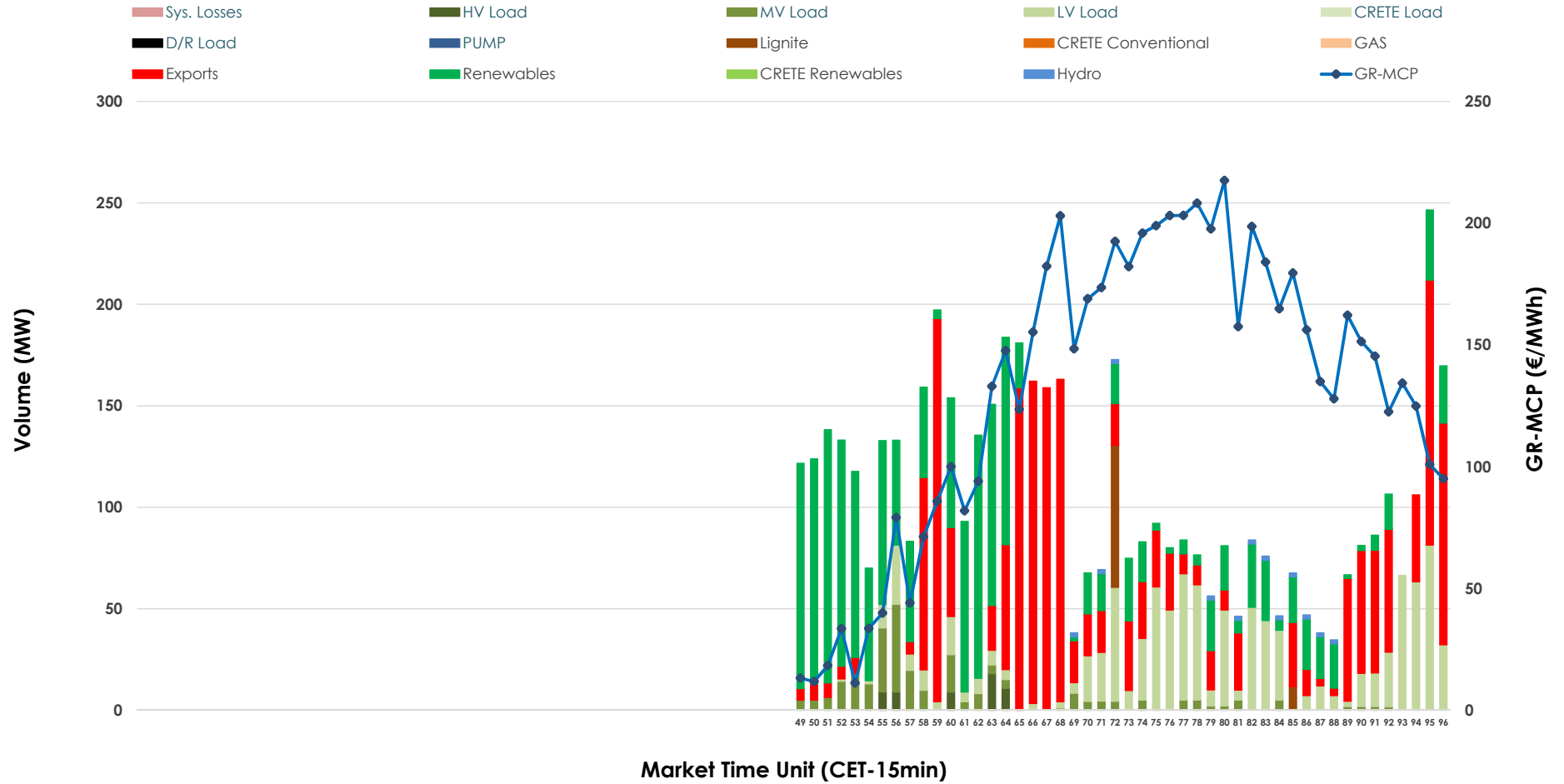


# IDA '3' Market Outlook

16.03.2026 IDA '3' Market - Sell



### 16.03.2026 IDA '3' Market - Buy



### GR Bidding Zone Weekly Figures

Delivery Day	10.03	11.03	12.03	13.03	14.03	15.03	16.03
	↗ 15%	↗ 21%	↗ 5%	↘ -45%	↗ 25%	↘ -6%	↗ 55%
<b>Avg.MCP (€/MWh)</b>	101.98	123.76	129.75	72.01	90.25	84.79	131.09
<b>Max.MCP (€/MWh)</b>	238.89	247.55	266.91	185.96	172.47	154.76	217.49
<b>Min.MCP (€/MWh)</b>	-25.24	-7.31	-29.99	-17.88	-9.52	-13.13	11.16
	↗ 35%	↘ -35%	↗ 63%	↗ 17%	↘ -1%	↘ -51%	↗ 99%
<b>Tot.Vol(GWh)</b>	2.13	1.39	2.26	2.65	2.61	1.29	2.57

### Trades by Order Type

Delivery Day		10.03	11.03	12.03	13.03	14.03	15.03	16.03	
<b>Ord Price Type</b>		<b>Sell &amp; Buy Trades in (GWh) per Price Type</b>							<b>(%)</b>
<b>PPT</b>	(S)	0.000	0.000	0.000	0.000	0.000	0.000	0.000	0.00%
<b>HBD</b>	(S)	0.747	0.399	1.044	1.304	1.299	0.607	1.094	85.14%
<b>BLK</b>	(S)	0.000	0.000	0.000	0.000	0.000	0.000	0.000	0.00%
<b>CPL</b>	(S)	0.321	0.296	0.086	0.020	0.007	0.038	0.191	14.86%
<b>PPT</b>	(B)	0.000	0.000	0.000	0.000	0.000	0.000	0.000	0.00%
<b>HBD</b>	(B)	0.924	0.467	0.601	0.689	0.457	0.321	0.799	62.20%
<b>BLK</b>	(B)	0.000	0.000	0.000	0.000	0.000	0.000	0.000	0.00%
<b>CPL</b>	(B)	0.143	0.228	0.528	0.635	0.848	0.323	0.486	37.80%
		<b>Sell &amp; Buy Orders Traded per Price Type</b>							<b>(%)</b>
<b>PPT</b>	(S)	0	0	0	0	0	0	0	0.00%
<b>HBD</b>	(S)	181	137	224	241	207	85	235	100.00%
<b>BLK</b>	(S)	0	0	0	0	0	0	0	0.00%
<b>PPT</b>	(B)	0	0	0	0	0	0	0	0.00%
<b>HBD</b>	(B)	234	245	167	127	121	107	174	100.00%
<b>BLK</b>	(B)	0	0	0	0	0	0	0	0.00%

- MCP** Market Clearing Price (€/MWh)
- PPT** Priority Price-Taking
- HBD** Hybrid
- BLK** Block
- CPL** Market Coupling Flow

### Trade's Volume Mix

		Sell - MWh		Buy - MWh	
<b>Lignite</b>	(1.1%)	14	20		(1.6%)
<b>Crete Conv.</b>	(0.0%)	0	0		(0.0%)
<b>Gas</b>	(26.9%)	346	0		(0.0%)
<b>Hydro</b>	(0.0%)	0	6		(0.5%)
<b>Imports</b>	(14.9%)	191			
<b>RES</b>	(28.6%)	367	439		(34.2%)
<b>Crete RES</b>	(0.0%)	0	0		(0.0%)
<b>HV Load</b>	(2.0%)	26	14		(1.1%)
<b>MV Load</b>	(19.0%)	244	66		(5.2%)
<b>LV Load</b>	(7.5%)	96	254		(19.7%)
<b>Crete Load</b>	(0.0%)	0	0		(0.0%)
<b>Pumping</b>	(0.0%)	0	0		(0.0%)
<b>Exports</b>				486	(37.8%)
<b>Sys.Losses</b>	(0.0%)	0	0		(0.0%)
<b>D/R Load</b>	(0.0%)	0	0		(0.0%)

