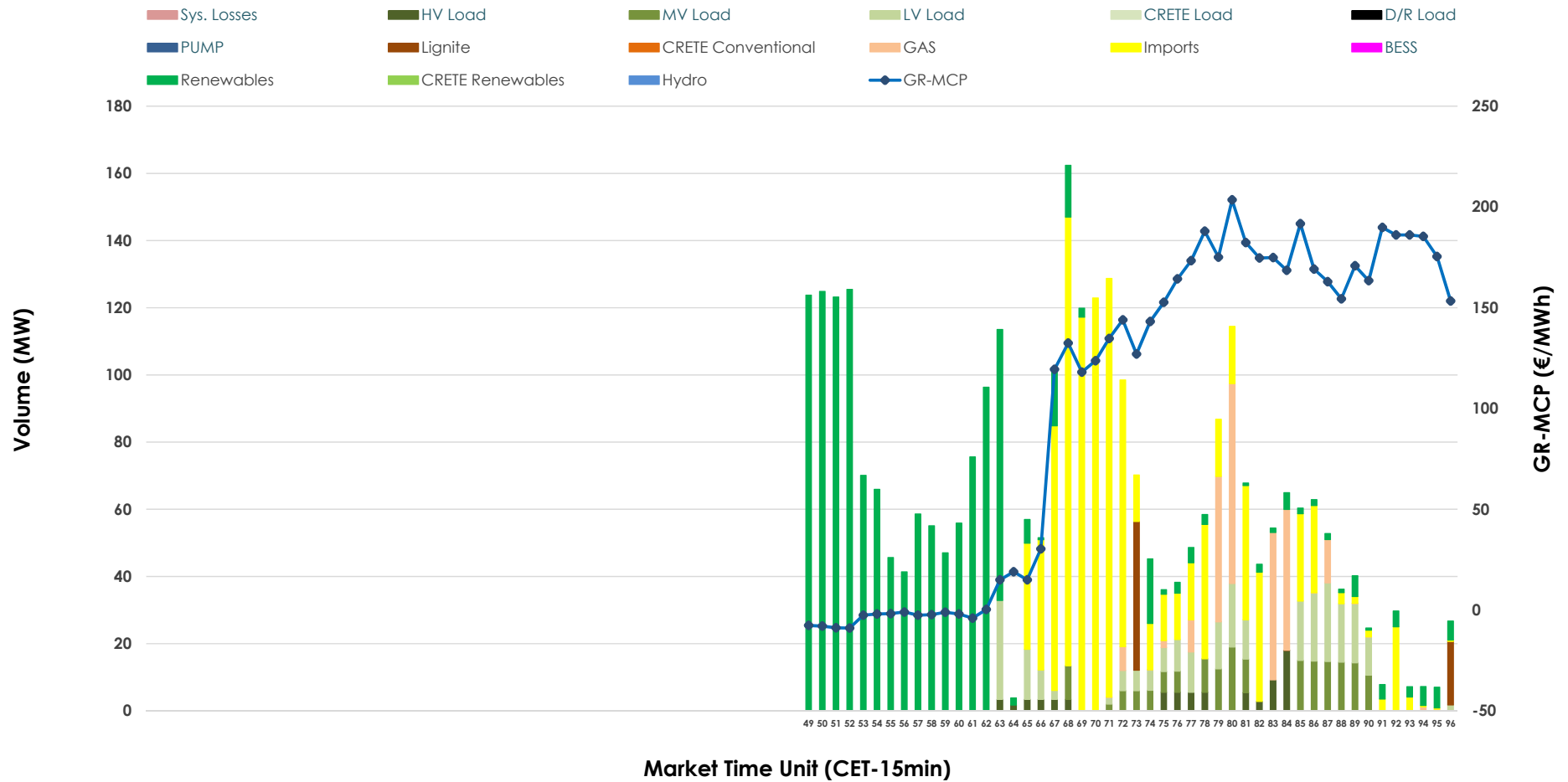


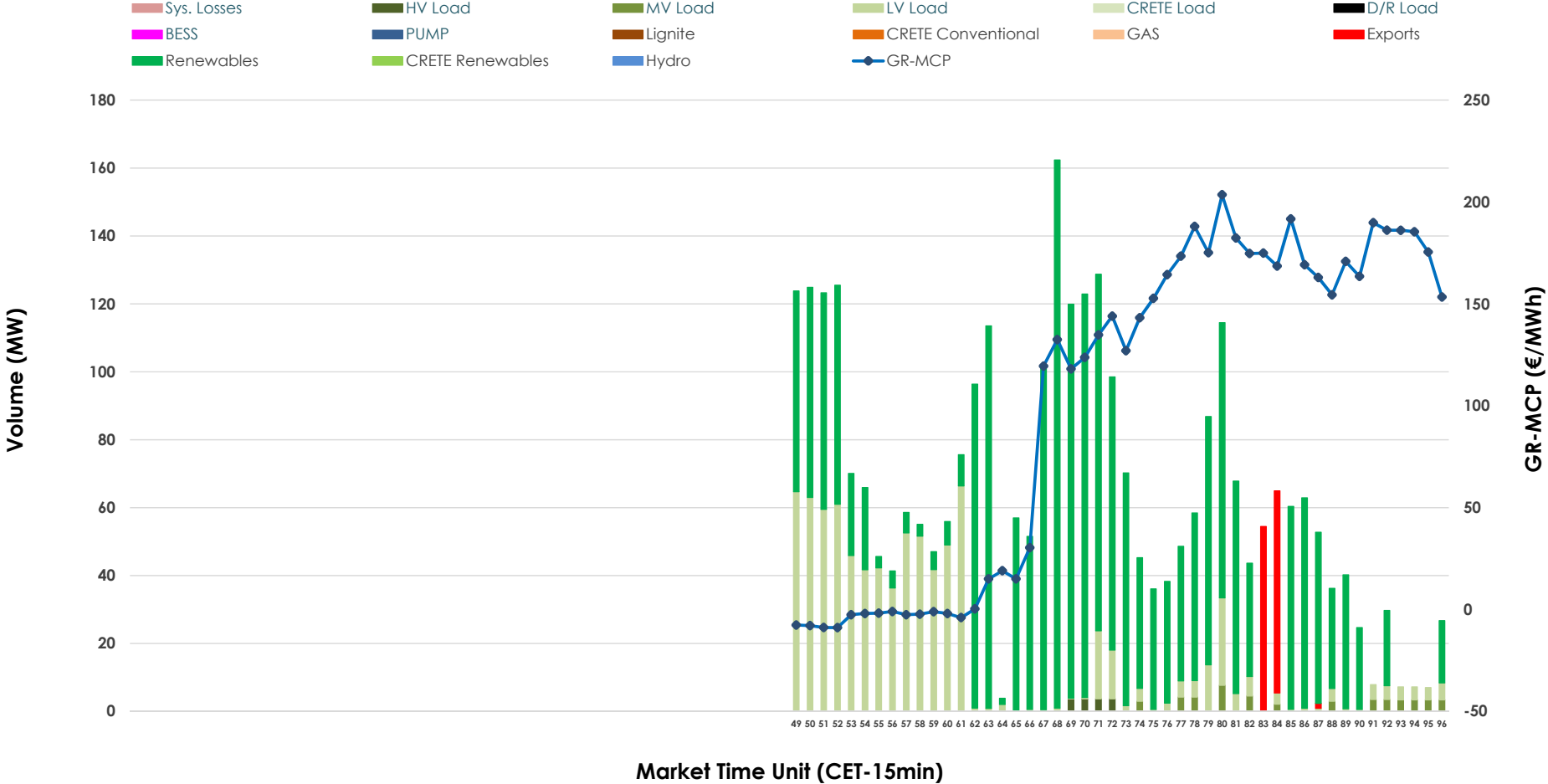


# IDA '3' Market Outlook

06.05.2026 IDA '3' Market - Sell



### 06.05.2026 IDA '3' Market - Buy



### GR Bidding Zone Weekly Figures

Delivery Day	30.04	01.05	02.05	03.05	04.05	05.05	06.05
	👇 -26%	👇 -28%	👆 22%	👇 -1%	👆 80%	👇 -5%	👇 -12%
<b>Avg.MCP (€/MWh)</b>	78.43	56.53	68.99	68.12	122.88	116.60	102.41
<b>Max.MCP (€/MWh)</b>	193.40	184.92	172.68	167.98	306.49	295.47	203.55
<b>Min.MCP (€/MWh)</b>	0.39	-12.84	-56.03	-16.76	-16.16	-5.71	-8.92
	👇 -44%	👇 -13%	👆 62%	➡️ 0%	👇 -8%	👇 -54%	👆 56%
<b>Tot.Vol(GWh)</b>	1.70	1.49	2.41	2.40	2.21	1.01	1.58

### Trades by Order Type

Delivery Day		30.04	01.05	02.05	03.05	04.05	05.05	06.05	
<b>Ord Price Type</b>		<b>Sell &amp; Buy Trades in (GWh) per Price Type</b>							<b>(%)</b>
<b>PPT</b>	(S)	0.000	0.000	0.000	0.000	0.000	0.000	0.000	0.00%
<b>HBD</b>	(S)	0.841	0.744	0.889	1.114	0.625	0.401	0.529	66.93%
<b>BLK</b>	(S)	0.000	0.000	0.000	0.000	0.000	0.000	0.000	0.00%
<b>CPL</b>	(S)	0.011	0.000	0.313	0.086	0.483	0.106	0.261	33.07%
<b>PPT</b>	(B)	0.000	0.000	0.000	0.000	0.000	0.000	0.000	0.00%
<b>HBD</b>	(B)	0.434	0.256	0.941	0.667	1.107	0.460	0.761	96.35%
<b>BLK</b>	(B)	0.000	0.000	0.000	0.000	0.000	0.000	0.000	0.00%
<b>CPL</b>	(B)	0.418	0.488	0.261	0.534	0.000	0.047	0.029	3.65%
		<b>Sell &amp; Buy Orders Traded per Price Type</b>							<b>(%)</b>
<b>PPT</b>	(S)	0	0	0	0	0	0	0	0.00%
<b>HBD</b>	(S)	233	183	166	149	192	115	100	100.00%
<b>BLK</b>	(S)	0	0	0	0	0	0	0	0.00%
<b>PPT</b>	(B)	0	0	0	0	0	0	0	0.00%
<b>HBD</b>	(B)	124	88	157	94	179	211	154	100.00%
<b>BLK</b>	(B)	0	0	0	0	0	0	0	0.00%

- MCP** Market Clearing Price (€/MWh)
- PPT** Priority Price-Taking
- HBD** Hybrid
- BLK** Block
- CPL** Market Coupling Flow

### Trade's Volume Mix

		Sell - MWh		Buy - MWh	
<b>Lignite</b>	(2.0%)	16	0		(0.0%)
<b>Crete Conv.</b>	(0.0%)	0	0		(0.0%)
<b>Gas</b>	(7.0%)	56	0		(0.0%)
<b>Hydro</b>	(0.0%)	0	0		(0.0%)
<b>Imports</b>	(33.1%)	261			
<b>RES</b>	(41.6%)	329	540		(68.3%)
<b>Crete RES</b>	(0.0%)	0	0		(0.0%)
<b>BESS</b>	(0.0%)	0	0		(0.0%)
<b>HV Load</b>	(2.4%)	19	4		(0.5%)
<b>MV Load</b>	(5.6%)	45	12		(1.6%)
<b>LV Load</b>	(8.2%)	65	205		(26.0%)
<b>Crete Load</b>	(0.0%)	0	0		(0.0%)
<b>Pumping</b>	(0.0%)	0	0		(0.0%)
<b>Exports</b>			29		(3.6%)
<b>Sys.Losses</b>	(0.0%)	0	0		(0.0%)
<b>D/R Load</b>	(0.0%)	0	0		(0.0%)

