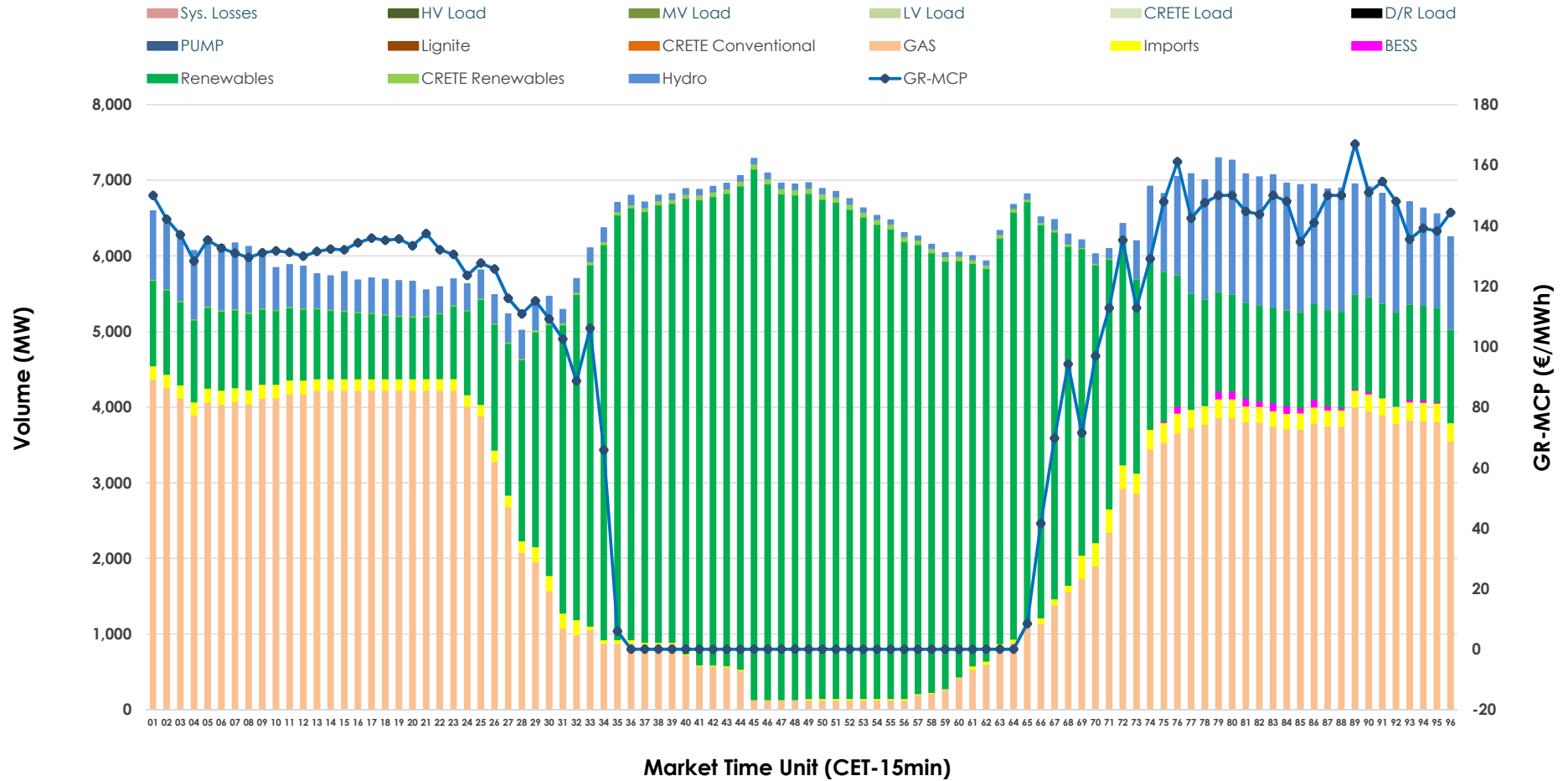


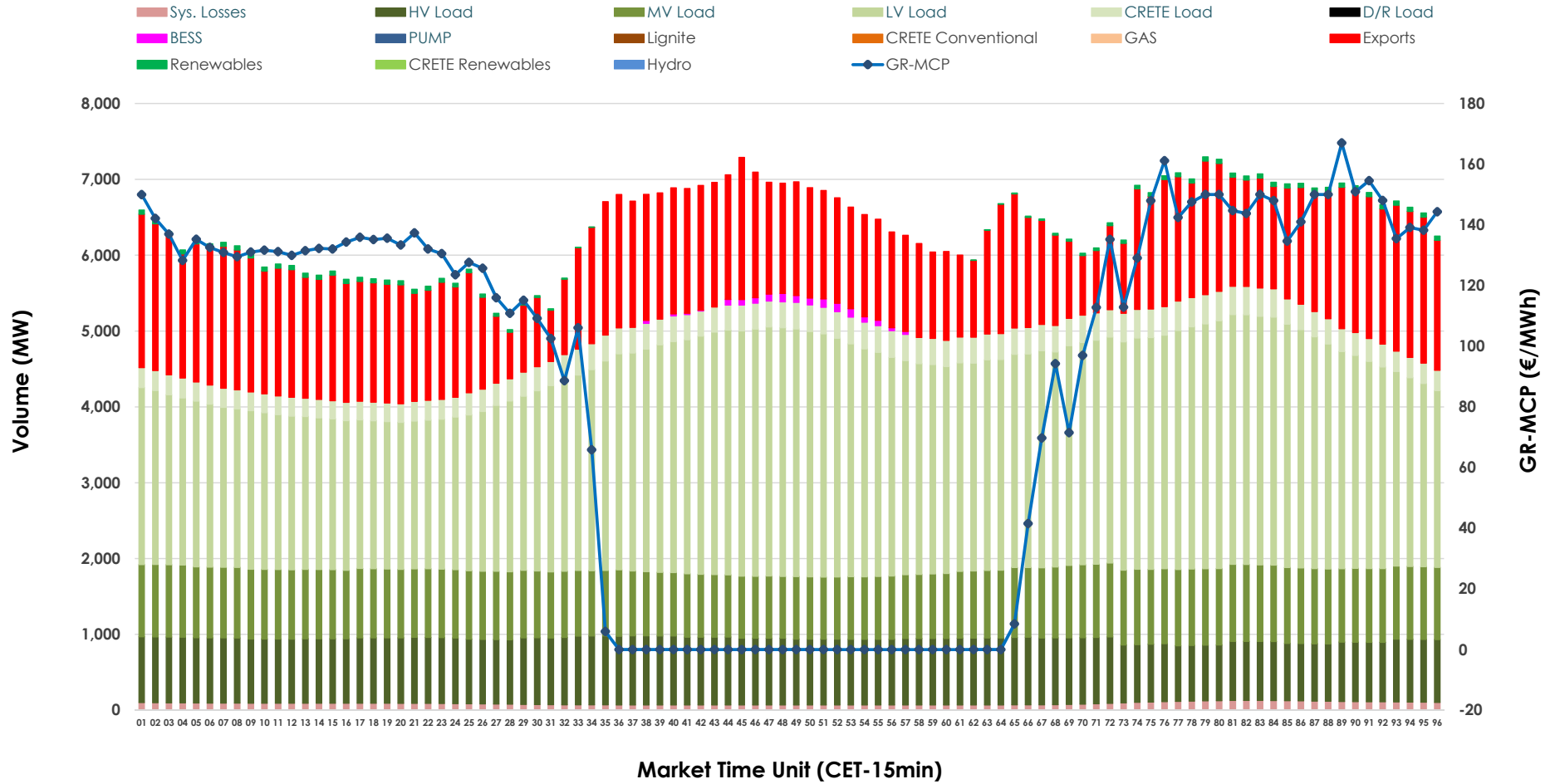


# Day-Ahead Market Outlook

31.05.2026 Day-Ahead Market - Sell



### 31.05.2026 Day-Ahead Market - Buy



### GR Bidding Zone Weekly Figures

Delivery Day	25.05	26.05	27.05	28.05	29.05	30.05	31.05
	↗ 22%	↗ 15%	↗ 13%	↘ -7%	↘ -7%	↗ 11%	↘ -6%
<b>Avg.MCP (€/MWh)</b>	73.44	84.59	95.98	89.64	83.77	92.62	87.36
<b>Max.MCP (€/MWh)</b>	174.16	214.80	277.76	199.16	173.41	216.79	166.99
<b>Min.MCP (€/MWh)</b>	-0.01	-0.01	-0.01	0.00	-0.01	-1.64	-0.01
	↗ 18%	↗ 7%	➡ -1%	↘ -2%	↗ 4%	↘ -13%	↘ -3%
<b>Tot.Vol(GWh)</b>	336.26	358.48	355.94	348.78	363.45	316.75	306.63

### Trades by Order Type

Delivery Day		25.05	26.05	27.05	28.05	29.05	30.05	31.05	
<b>Ord Price Type</b>		<b>Sell &amp; Buy Trades in (GWh) per Price Type</b>							<b>(%)</b>
<b>PPT</b>	(S)	76.606	78.984	68.767	62.856	71.215	67.224	63.025	41.11%
<b>HBD</b>	(S)	70.070	75.012	77.269	78.987	80.425	65.767	62.234	40.59%
<b>BLK</b>	(S)	21.452	25.245	31.936	32.486	30.087	25.384	28.056	18.30%
<b>CPL</b>	(S)	0.000	0.000	0.000	0.063	0.000	0.000	0.000	0.00%
<b>PPT</b>	(B)	16.106	15.384	15.153	15.640	15.607	15.170	13.900	9.07%
<b>HBD</b>	(B)	124.416	132.398	133.694	135.255	136.644	122.362	115.985	75.65%
<b>BLK</b>	(B)	0.000	0.000	0.000	0.000	0.000	0.000	0.000	0.00%
<b>CPL</b>	(B)	27.606	31.459	29.124	23.497	29.476	20.843	23.430	15.28%
		<b>Sell &amp; Buy Orders Traded per Price Type</b>							<b>(%)</b>
<b>PPT</b>	(S)	1693	1809	1828	1843	1765	1835	1814	36.29%
<b>HBD</b>	(S)	2977	3138	3360	3490	3295	3258	3170	63.41%
<b>BLK</b>	(S)	11	12	13	13	13	17	15	0.30%
<b>PPT</b>	(B)	2358	2362	2344	2370	2354	2346	2301	38.54%
<b>HBD</b>	(B)	3699	4095	4069	3997	4076	3982	3669	61.46%
<b>BLK</b>	(B)	0	0	0	0	0	0	0	0.00%

- MCP** Market Clearing Price (€/MWh)
- PPT** Priority Price-Taking
- HBD** Hybrid
- BLK** Block
- CPL** Market Coupling Flow

### Trade's Volume Mix

	Sell - MWh	Buy - MWh	
<b>Lignite</b>	0	0	(0.0%)
<b>Crete Conv.</b>	0	0	(0.0%)
<b>Gas</b>	58,948	0	(0.0%)
<b>Hydro</b>	13,721	0	(0.0%)
<b>Imports</b>	3,339		
<b>RES</b>	76,332	750	(0.5%)
<b>Crete RES</b>	701	0	(0.0%)
<b>BESS</b>	274	310	(0.2%)
<b>HV Load</b>	0	20,377	(13.3%)
<b>MV Load</b>	0	21,874	(14.3%)
<b>LV Load</b>	0	64,385	(42.0%)
<b>Crete Load</b>	0	7,606	(5.0%)
<b>Pumping</b>	0	0	(0.0%)
<b>Exports</b>		35,881	(23.4%)
<b>Sys.Losses</b>	0	2,133	(1.4%)
<b>D/R Load</b>	0	0	(0.0%)

