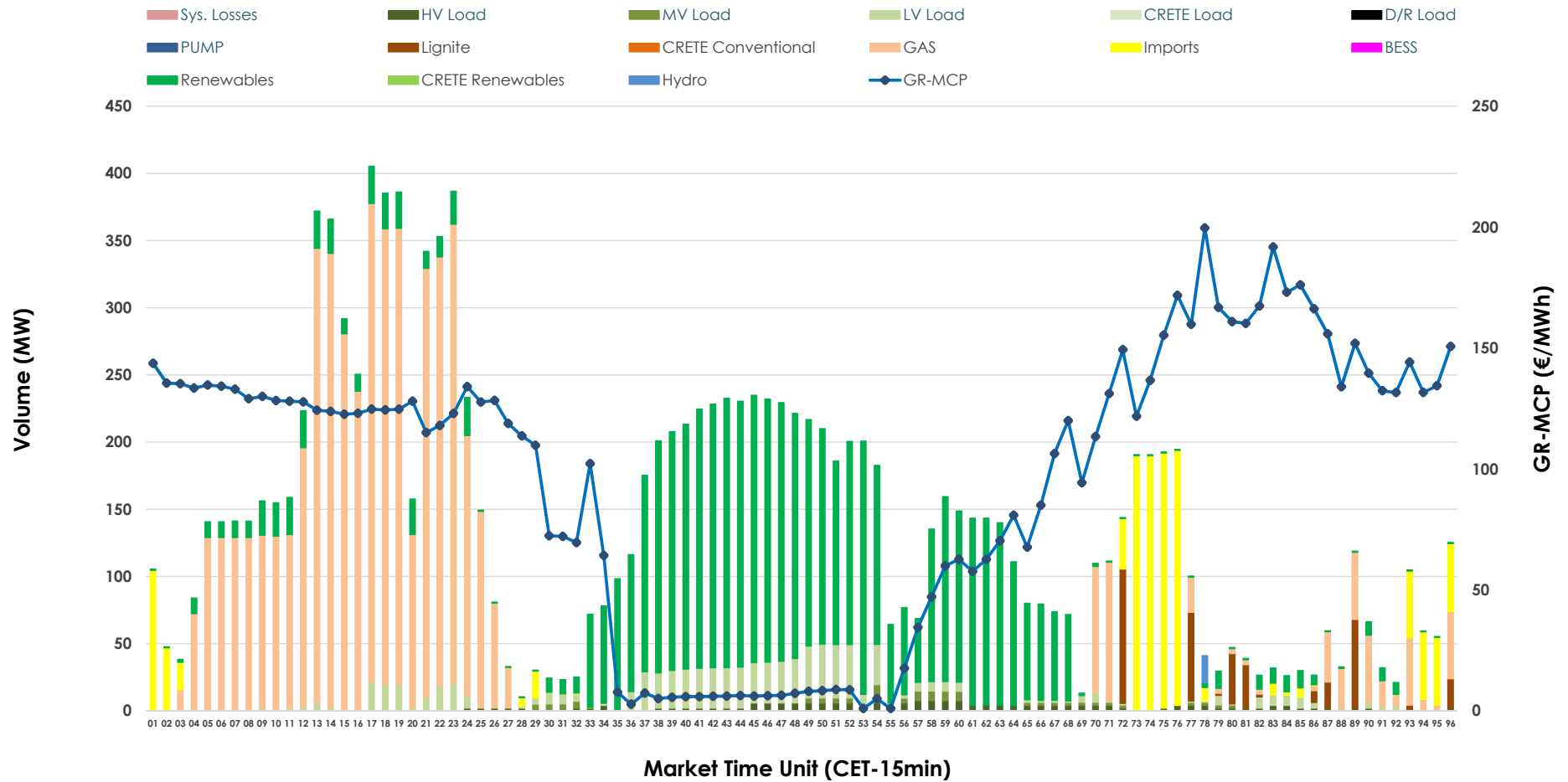


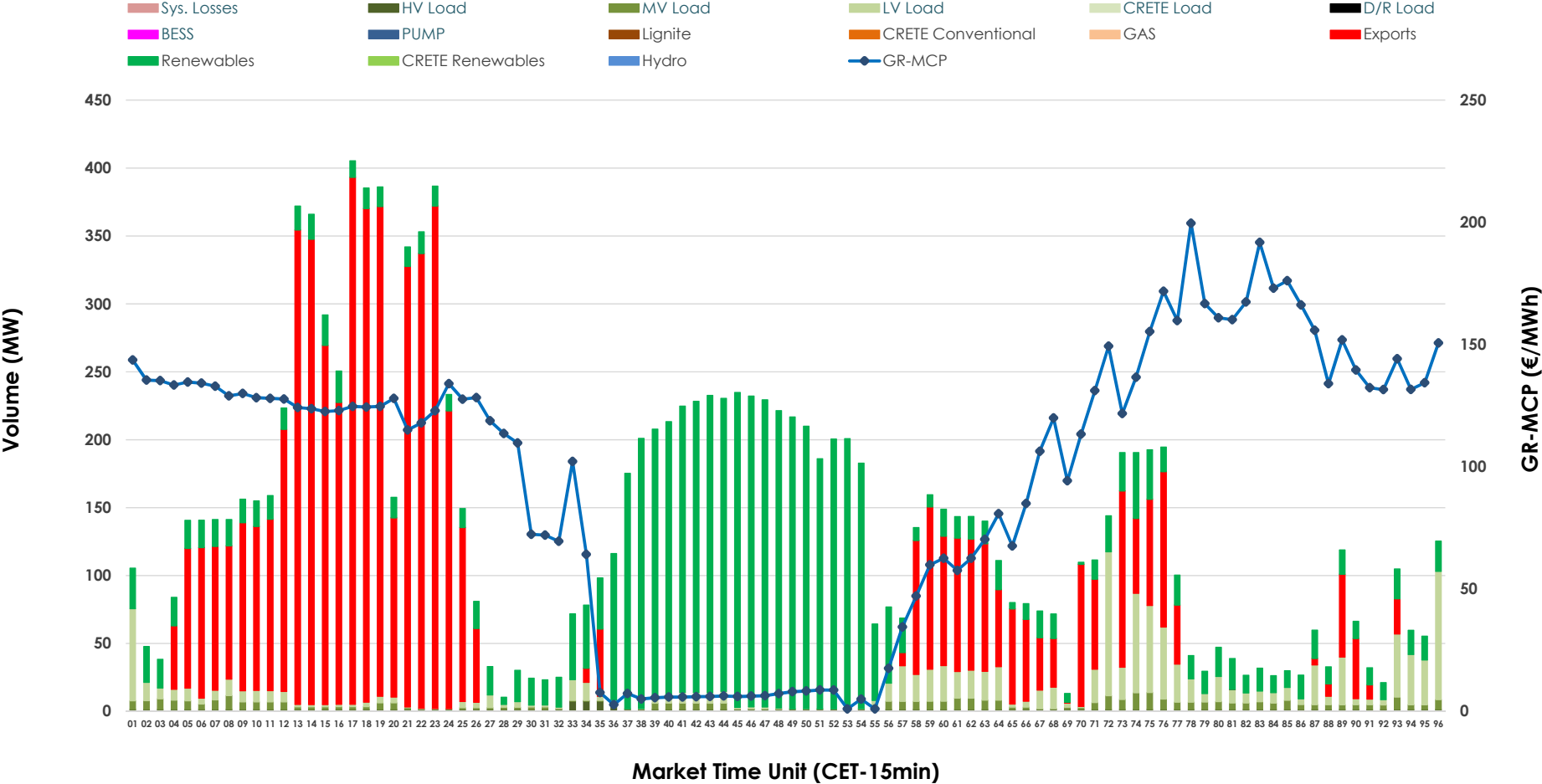


IDA '1' Market Outlook

08.06.2026 IDA '1' Market - Sell



08.06.2026 IDA '1' Market - Buy



GR Bidding Zone Weekly Figures

Delivery Day	02.06	03.06	04.06	05.06	06.06	07.06	08.06
	👇 -2%	👇 -12%	👉 4%	👉 31%	👇 -30%	👇 -31%	👆 74%
Avg.MCP (€/MWh)	95.04	83.58	86.77	114.04	80.04	55.54	96.43
Max.MCP (€/MWh)	173.10	154.37	219.59	187.06	156.50	142.61	199.66
Min.MCP (€/MWh)	-9.72	-10.09	1.23	29.00	-11.00	-14.00	1.00
	👇 -27%	👉 23%	👇 -34%	👉 23%	👉 15%	👉 30%	👉 7%
Tot.Vol(GWh)	4.35	5.34	3.50	4.29	4.93	6.42	6.87

Trades by Order Type

Delivery Day		02.06	03.06	04.06	05.06	06.06	07.06	08.06	
Ord Price Type		Sell & Buy Trades in (GWh) per Price Type							(%)
PPT	(S)	0.000	0.000	0.000	0.000	0.000	0.000	0.000	0.00%
HBD	(S)	1.893	2.333	0.551	1.285	2.180	1.634	3.130	91.07%
BLK	(S)	0.000	0.000	0.000	0.000	0.000	0.000	0.000	0.00%
CPL	(S)	0.280	0.338	1.200	0.862	0.286	1.574	0.307	8.93%
PPT	(B)	0.000	0.000	0.000	0.000	0.000	0.000	0.000	0.00%
HBD	(B)	1.808	1.998	1.626	1.655	1.325	3.074	1.796	52.26%
BLK	(B)	0.000	0.000	0.000	0.000	0.000	0.000	0.000	0.00%
CPL	(B)	0.365	0.673	0.125	0.492	1.142	0.134	1.641	47.74%
		Sell & Buy Orders Traded per Price Type							(%)
PPT	(S)	0	0	0	0	0	0	0	0.00%
HBD	(S)	123	466	216	208	209	202	369	100.00%
BLK	(S)	0	0	0	0	0	0	0	0.00%
PPT	(B)	0	0	0	0	0	0	0	0.00%
HBD	(B)	870	1055	850	889	797	731	1013	100.00%
BLK	(B)	0	0	0	0	0	0	0	0.00%

- MCP** Market Clearing Price (€/MWh)
- PPT** Priority Price-Taking
- HBD** Hybrid
- BLK** Block
- CPL** Market Coupling Flow

Trade's Volume Mix

	Sell - MWh	Buy - MWh	
Lignite (2.6%)	90	0	(0.0%)
Crete Conv. (0.0%)	0	0	(0.0%)
Gas (40.1%)	1,380	0	(0.0%)
Hydro (0.1%)	5	0	(0.0%)
Imports (8.9%)	307		
RES (39.6%)	1,363	1,341	(39.0%)
Crete RES (0.0%)	0	0	(0.0%)
BESS (0.0%)	0	0	(0.0%)
HV Load (1.5%)	52	42	(1.2%)
MV Load (0.8%)	29	90	(2.6%)
LV Load (6.2%)	212	323	(9.4%)
Crete Load (0.0%)	0	0	(0.0%)
Pumping (0.0%)	0	0	(0.0%)
Exports		1,641	(47.7%)
Sys.Losses (0.0%)	0	0	(0.0%)
D/R Load (0.0%)	0	0	(0.0%)

