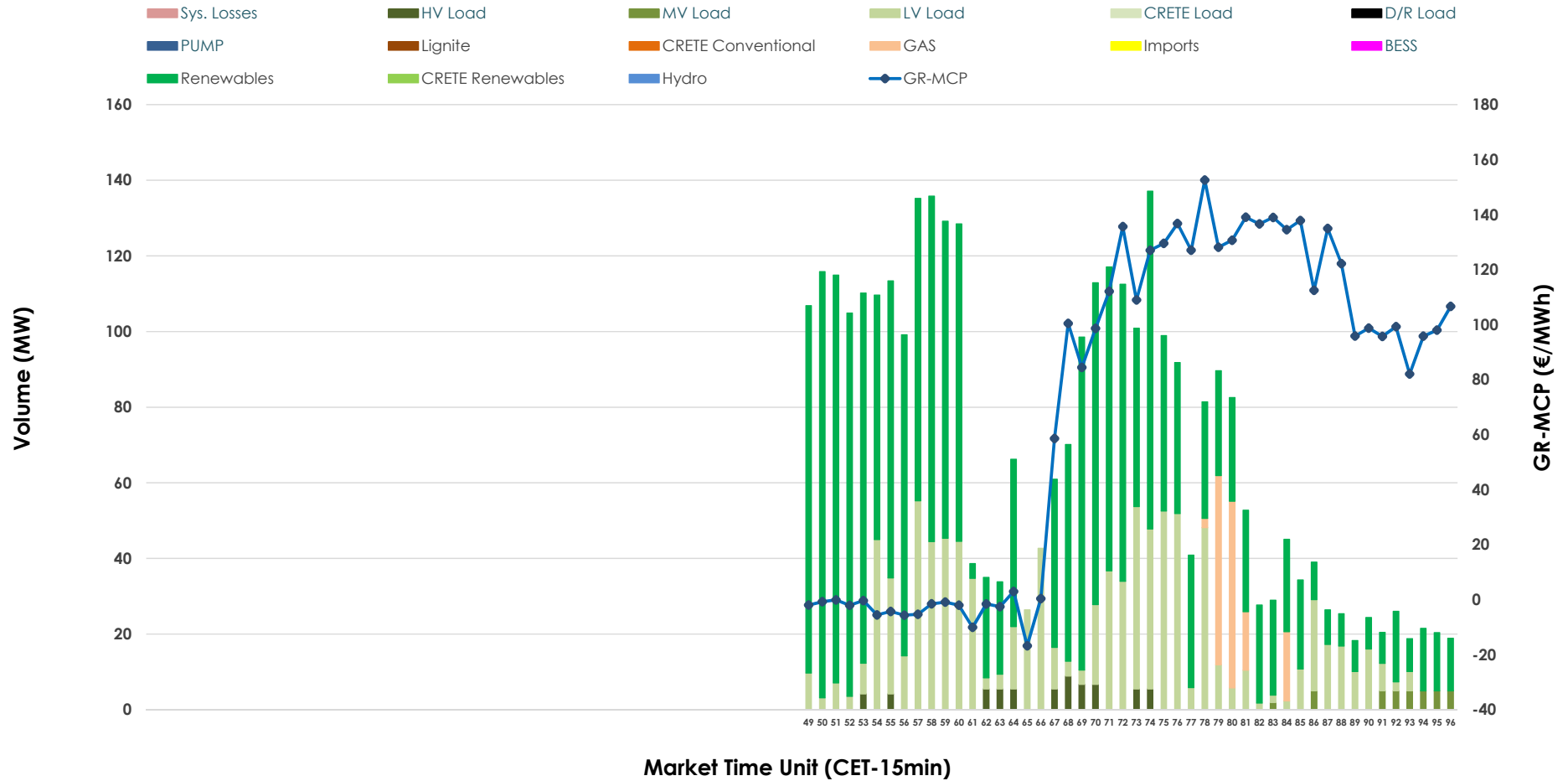


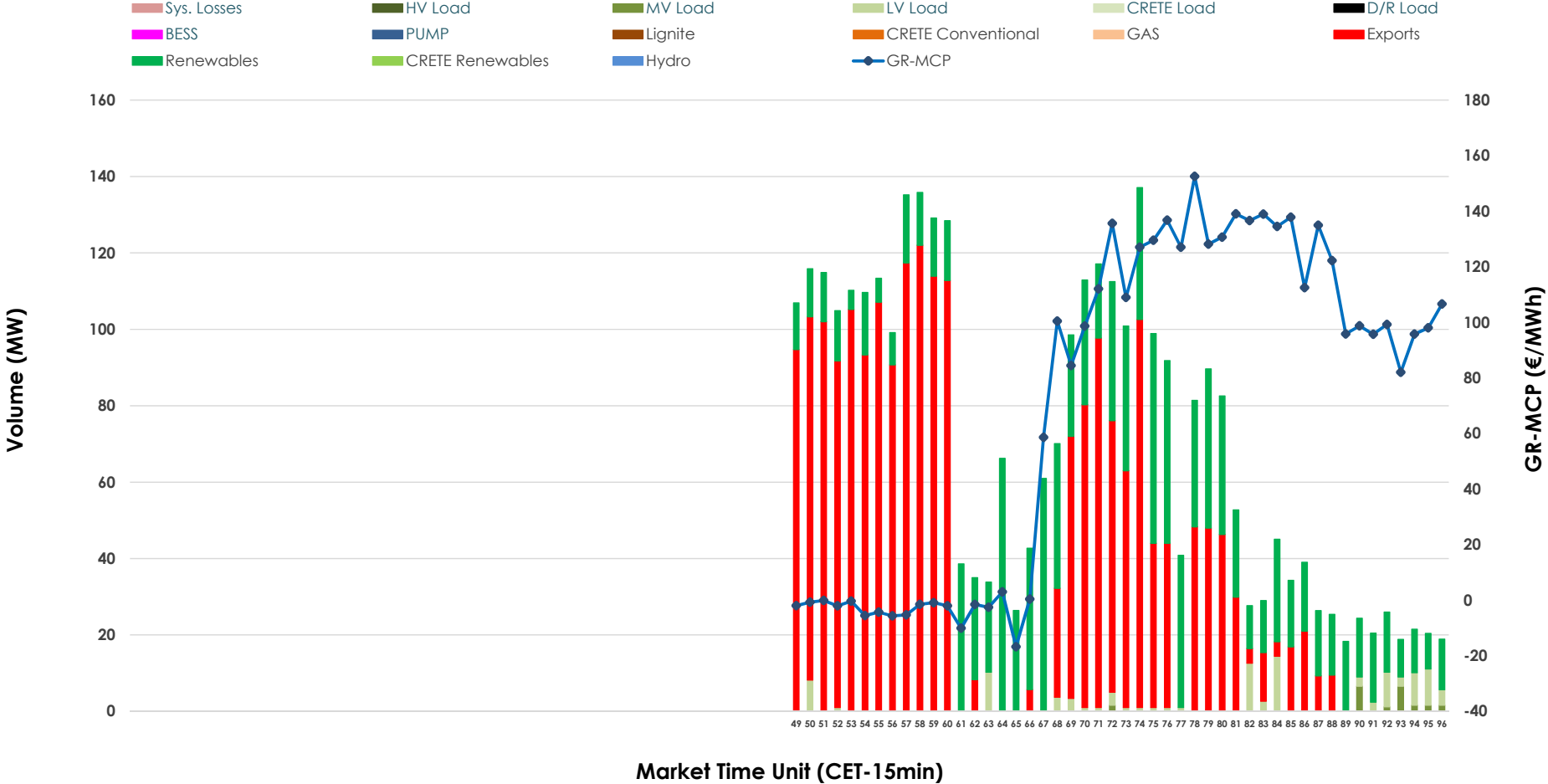


IDA '3' Market Outlook

29.05.2026 IDA '3' Market - Sell



29.05.2026 IDA '3' Market - Buy



GR Bidding Zone Weekly Figures

Delivery Day	23.05	24.05	25.05	26.05	27.05	28.05	29.05
	👇 -16%	👇 -13%	👆 12%	👆 8%	👆 47%	👇 -23%	👇 -18%
Avg.MCP (€/MWh)	72.12	62.70	70.53	76.50	112.62	86.25	70.87
Max.MCP (€/MWh)	171.24	154.90	167.51	190.92	269.90	205.07	152.55
Min.MCP (€/MWh)	-2.23	-16.98	-14.01	-9.34	-8.29	-6.67	-16.74
	👆 10%	👇 -15%	👆 103%	👆 51%	👇 -60%	👆 48%	👇 -39%
Tot.Vol(GWh)	1.80	1.53	3.11	4.72	1.87	2.77	1.69

Trades by Order Type

Delivery Day		23.05	24.05	25.05	26.05	27.05	28.05	29.05	
Ord Price Type		Sell & Buy Trades in (GWh) per Price Type							(%)
PPT	(S)	0.000	0.000	0.000	0.000	0.000	0.000	0.000	0.00%
HBD	(S)	0.858	0.616	1.038	2.324	0.427	0.934	0.847	100.00%
BLK	(S)	0.000	0.000	0.000	0.000	0.000	0.000	0.000	0.00%
CPL	(S)	0.040	0.150	0.519	0.034	0.509	0.449	0.000	0.00%
PPT	(B)	0.000	0.000	0.000	0.000	0.000	0.000	0.000	0.00%
HBD	(B)	0.566	0.418	1.318	1.882	0.893	1.365	0.322	37.98%
BLK	(B)	0.000	0.000	0.000	0.000	0.000	0.000	0.000	0.00%
CPL	(B)	0.332	0.349	0.240	0.476	0.043	0.018	0.526	62.02%
		Sell & Buy Orders Traded per Price Type							(%)
PPT	(S)	0	0	0	0	0	0	0	0.00%
HBD	(S)	167	119	166	141	115	144	167	100.00%
BLK	(S)	0	0	0	0	0	0	0	0.00%
PPT	(B)	0	0	0	0	0	0	0	0.00%
HBD	(B)	171	174	309	251	285	308	203	100.00%
BLK	(B)	0	0	0	0	0	0	0	0.00%

- MCP** Market Clearing Price (€/MWh)
- PPT** Priority Price-Taking
- HBD** Hybrid
- BLK** Block
- CPL** Market Coupling Flow

Trade's Volume Mix

		Sell - MWh	Buy - MWh	
Lignite	(0.0%)	0	0	(0.0%)
Crete Conv.	(0.0%)	0	0	(0.0%)
Gas	(4.0%)	34	0	(0.0%)
Hydro	(0.0%)	0	0	(0.0%)
Imports	(0.0%)	0	0	
RES	(65.2%)	553	290	(34.3%)
Crete RES	(0.0%)	0	0	(0.0%)
BESS	(0.0%)	0	0	(0.0%)
HV Load	(1.9%)	16	0	(0.0%)
MV Load	(1.1%)	9	5	(0.6%)
LV Load	(27.8%)	236	26	(3.1%)
Crete Load	(0.0%)	0	0	(0.0%)
Pumping	(0.0%)	0	0	(0.0%)
Exports			526	(62.0%)
Sys.Losses	(0.0%)	0	0	(0.0%)
D/R Load	(0.0%)	0	0	(0.0%)

