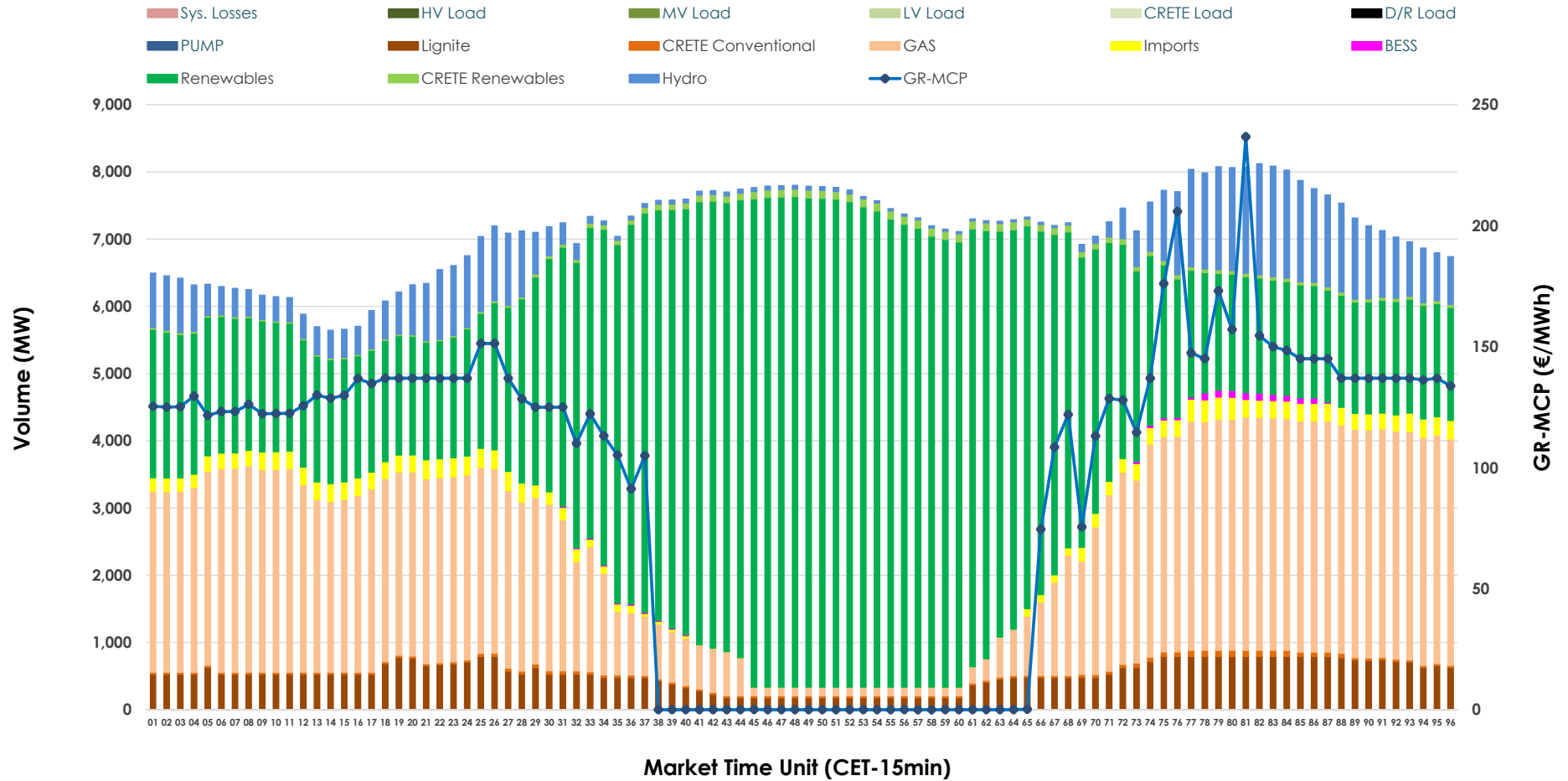


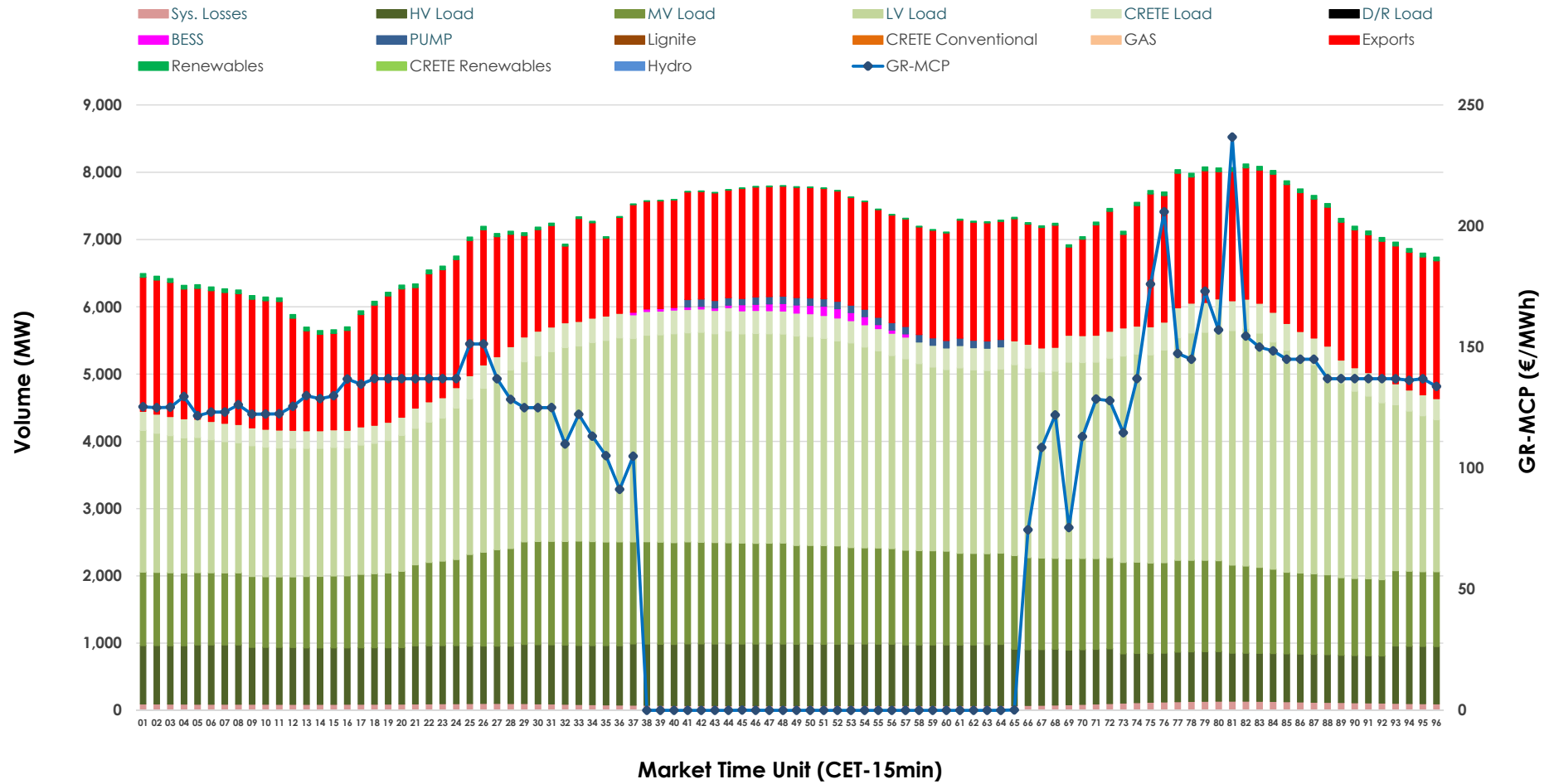


# Day-Ahead Market Outlook

14.05.2026 Day-Ahead Market - Sell



### 14.05.2026 Day-Ahead Market - Buy



### GR Bidding Zone Weekly Figures

Delivery Day	08.05	09.05	10.05	11.05	12.05	13.05	14.05
	↗ 1%	↘ -11%	↘ -16%	↗ 6%	↘ -19%	↗ 20%	↗ -1%
<b>Avg.MCP (€/MWh)</b>	122.10	109.01	91.94	97.12	78.99	95.00	94.38
<b>Max.MCP (€/MWh)</b>	180.08	220.88	208.60	191.00	196.70	187.34	236.73
<b>Min.MCP (€/MWh)</b>	54.19	0.00	-0.02	0.00	-0.10	0.00	0.00
	↗ 3%	↗ 1%	↘ -9%	↗ 12%	↗ 7%	↘ -2%	↗ 2%
<b>Tot.Vol(GWh)</b>	307.30	311.59	283.97	317.58	340.95	335.77	342.44

### Trades by Order Type

Delivery Day		08.05	09.05	10.05	11.05	12.05	13.05	14.05	
Ord Price Type		Sell & Buy Trades in (GWh) per Price Type							(%)
<b>PPT</b>	(S)	56.340	59.265	60.371	67.164	77.219	70.214	71.021	41.48%
<b>HBD</b>	(S)	61.406	71.643	57.624	69.769	74.127	78.723	72.208	42.17%
<b>BLK</b>	(S)	30.821	24.868	23.989	21.856	19.129	18.946	27.992	16.35%
<b>CPL</b>	(S)	5.083	0.022	0.000	0.000	0.000	0.000	0.000	0.00%
<b>PPT</b>	(B)	15.159	15.045	14.673	14.748	15.151	15.355	15.696	9.17%
<b>HBD</b>	(B)	124.069	119.139	108.171	122.215	129.213	128.880	127.499	74.46%
<b>BLK</b>	(B)	0.000	0.000	0.000	0.000	0.000	0.000	0.000	0.00%
<b>CPL</b>	(B)	14.422	21.613	19.138	21.826	26.110	23.648	28.027	16.37%
		Sell & Buy Orders Traded per Price Type							(%)
<b>PPT</b>	(S)	1702	1708	1716	1762	1764	1686	1757	33.89%
<b>HBD</b>	(S)	3461	3499	3114	3213	2989	3378	3419	65.94%
<b>BLK</b>	(S)	10	10	9	6	6	8	9	0.17%
<b>PPT</b>	(B)	2316	2392	2360	2322	2327	2367	2353	36.63%
<b>HBD</b>	(B)	4025	4063	3578	3881	4077	4041	4071	63.37%
<b>BLK</b>	(B)	0	0	0	0	0	0	0	0.00%

- MCP** Market Clearing Price (€/MWh)
- PPT** Priority Price-Taking
- HBD** Hybrid
- BLK** Block
- CPL** Market Coupling Flow

### Trade's Volume Mix

	Sell - MWh	Buy - MWh	
<b>Lignite</b> (7.3%)	12,475	0	(0.0%)
<b>Crete Conv.</b> (0.6%)	979	0	(0.0%)
<b>Gas</b> (28.7%)	49,117	0	(0.0%)
<b>Hydro</b> (7.5%)	12,911	0	(0.0%)
<b>Imports</b> (2.4%)	4,034		
<b>RES</b> (52.5%)	89,861	860	(0.5%)
<b>Crete RES</b> (0.9%)	1,547	0	(0.0%)
<b>BESS</b> (0.2%)	297	403	(0.2%)
<b>HV Load</b> (0.0%)	0	20,219	(11.8%)
<b>MV Load</b> (0.0%)	0	31,479	(18.4%)
<b>LV Load</b> (0.0%)	0	64,960	(37.9%)
<b>Crete Load</b> (0.0%)	0	8,220	(4.8%)
<b>Pumping</b> (0.0%)	0	656	(0.4%)
<b>Exports</b>		42,178	(24.6%)
<b>Sys.Losses</b> (0.0%)	0	2,247	(1.3%)
<b>D/R Load</b> (0.0%)	0	0	(0.0%)

