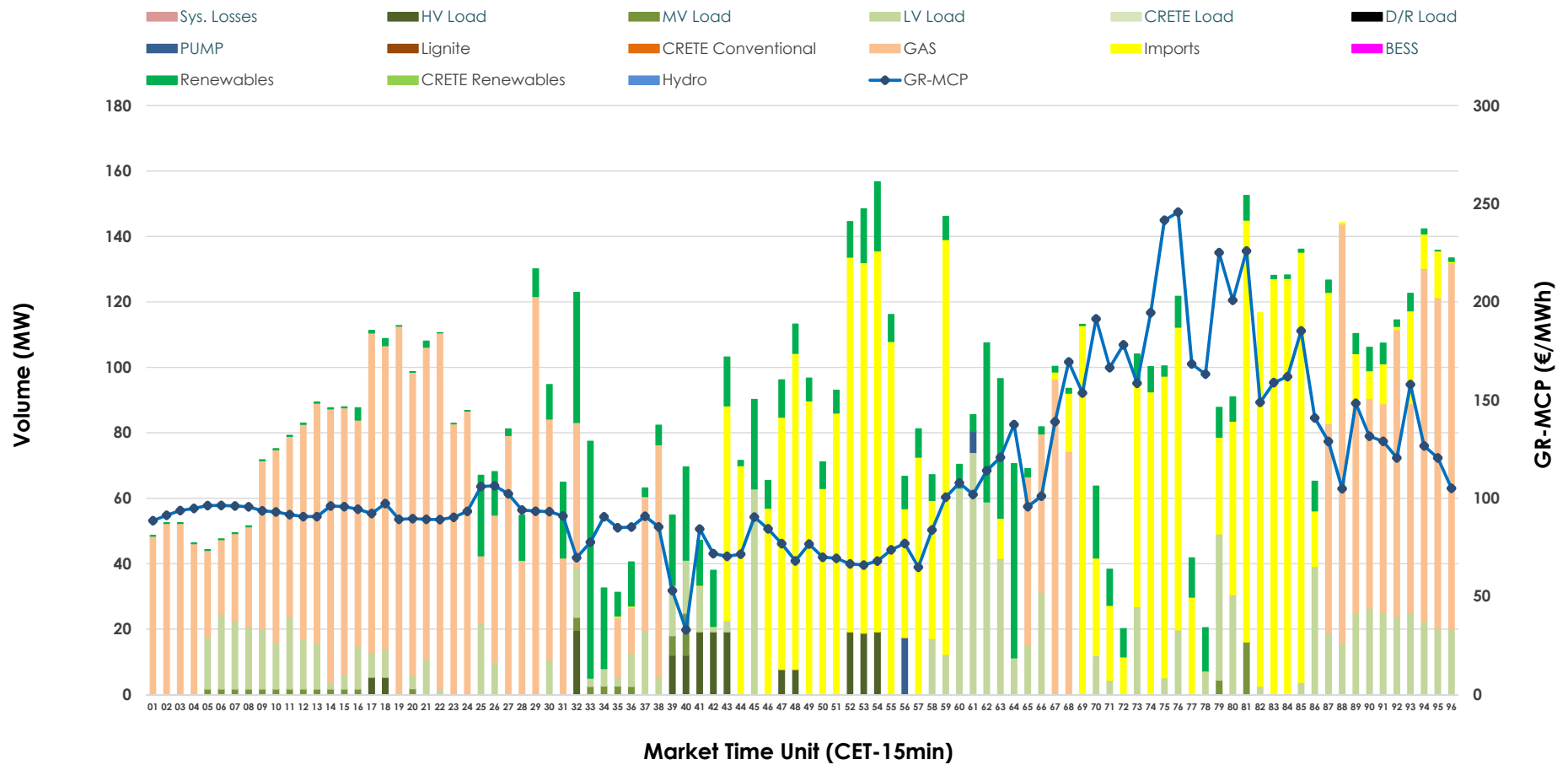


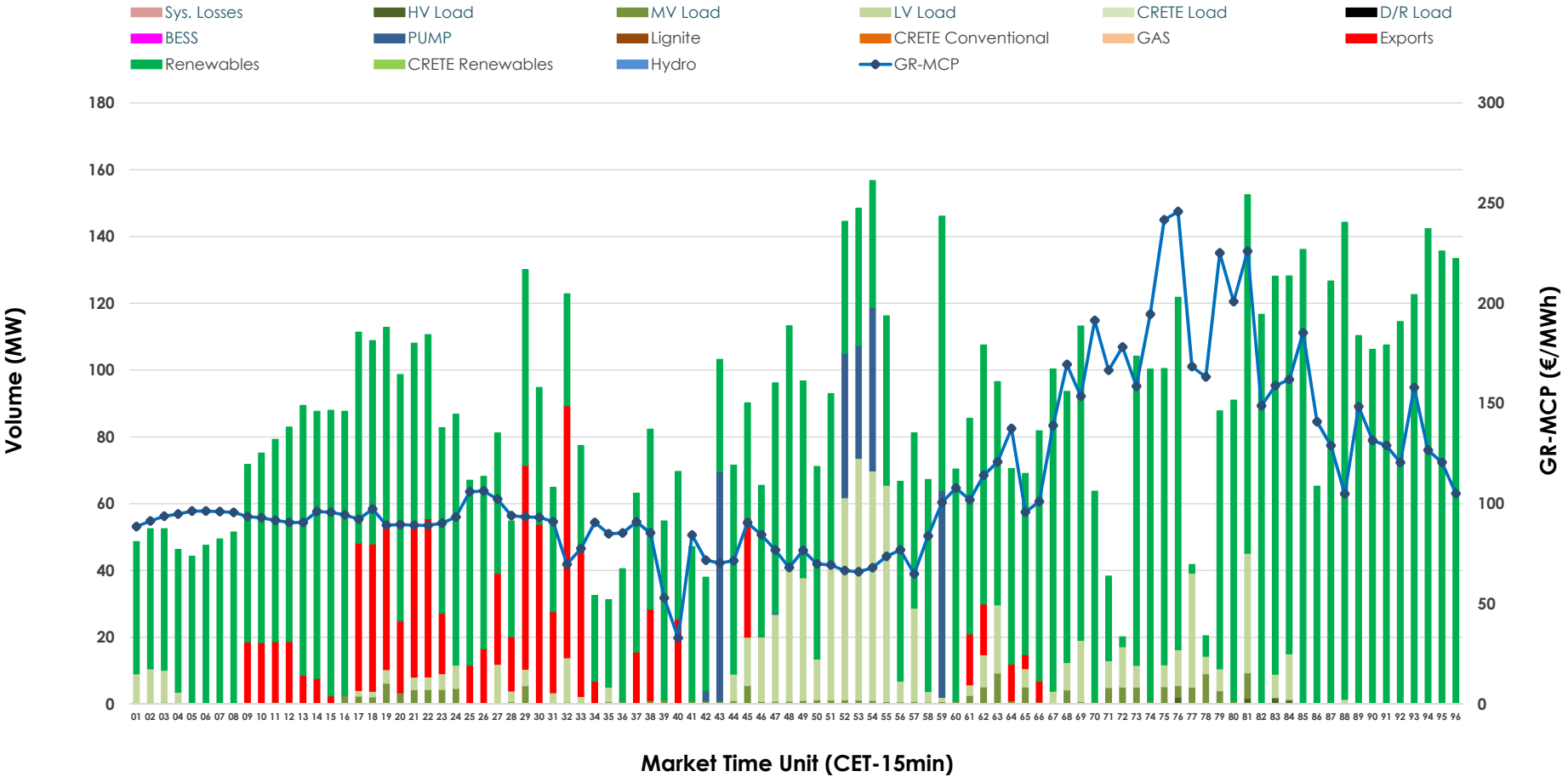


IDA '2' Market Outlook

20.03.2026 IDA '2' Market - Sell



20.03.2026 IDA '2' Market - Buy



GR Bidding Zone Weekly Figures

Delivery Day	14.03	15.03	16.03	17.03	18.03	19.03	20.03
	↗ 7%	↘ -6%	↕ 34%	↘ 11%	↘ -31%	↗ 17%	↗ 18%
Avg.MCP (€/MWh)	83.21	78.46	104.89	116.34	80.64	94.68	111.38
Max.MCP (€/MWh)	177.47	172.20	197.06	193.25	148.43	211.38	245.73
Min.MCP (€/MWh)	-20.66	-21.83	28.53	60.40	-10.62	5.30	33.00
	↘ -25%	↗ 30%	↘ -17%	↘ -27%	↗ 2%	↘ -9%	↗ 22%
Tot.Vol(GWh)	4.78	6.22	5.17	3.75	3.81	3.46	4.24

Trades by Order Type

Delivery Day		14.03	15.03	16.03	17.03	18.03	19.03	20.03	
Ord Price Type		Sell & Buy Trades in (GWh) per Price Type							(%)
PPT	(S)	0.000	0.000	0.000	0.000	0.000	0.000	0.000	0.00%
HBD	(S)	1.681	1.893	1.823	1.679	0.962	1.678	1.422	67.13%
BLK	(S)	0.000	0.000	0.000	0.000	0.000	0.000	0.000	0.00%
CPL	(S)	0.711	1.216	0.761	0.194	0.942	0.054	0.696	32.87%
PPT	(B)	0.000	0.000	0.000	0.000	0.000	0.000	0.000	0.00%
HBD	(B)	2.145	2.551	1.583	1.440	1.798	0.974	1.907	90.04%
BLK	(B)	0.000	0.000	0.000	0.000	0.000	0.000	0.000	0.00%
CPL	(B)	0.246	0.559	1.001	0.434	0.106	0.758	0.211	9.96%
		Sell & Buy Orders Traded per Price Type							(%)
PPT	(S)	0	0	0	0	0	0	0	0.00%
HBD	(S)	277	292	391	427	207	324	245	100.00%
BLK	(S)	0	0	0	0	0	0	0	0.00%
PPT	(B)	0	0	0	0	0	0	0	0.00%
HBD	(B)	376	577	341	584	550	435	473	100.00%
BLK	(B)	0	0	0	0	0	0	0	0.00%

- MCP** Market Clearing Price (€/MWh)
- PPT** Priority Price-Taking
- HBD** Hybrid
- BLK** Block
- CPL** Market Coupling Flow

Trade's Volume Mix

	Sell - MWh	Buy - MWh	
Lignite (0.0%)	0	0	(0.0%)
Crete Conv. (0.0%)	0	0	(0.0%)
Gas (39.6%)	838	0	(0.0%)
Hydro (0.0%)	0	0	(0.0%)
Imports (32.9%)	696		
RES (10.3%)	219	1,594	(75.3%)
Crete RES (0.0%)	0	0	(0.0%)
BESS (0.0%)	0	0	(0.0%)
HV Load (2.2%)	46	2	(0.1%)
MV Load (0.9%)	19	41	(1.9%)
LV Load (13.9%)	293	205	(9.7%)
Crete Load (0.0%)	0	0	(0.0%)
Pumping (0.3%)	6	65	(3.1%)
Exports		211	(10.0%)
Sys.Losses (0.0%)	0	0	(0.0%)
D/R Load (0.0%)	0	0	(0.0%)

