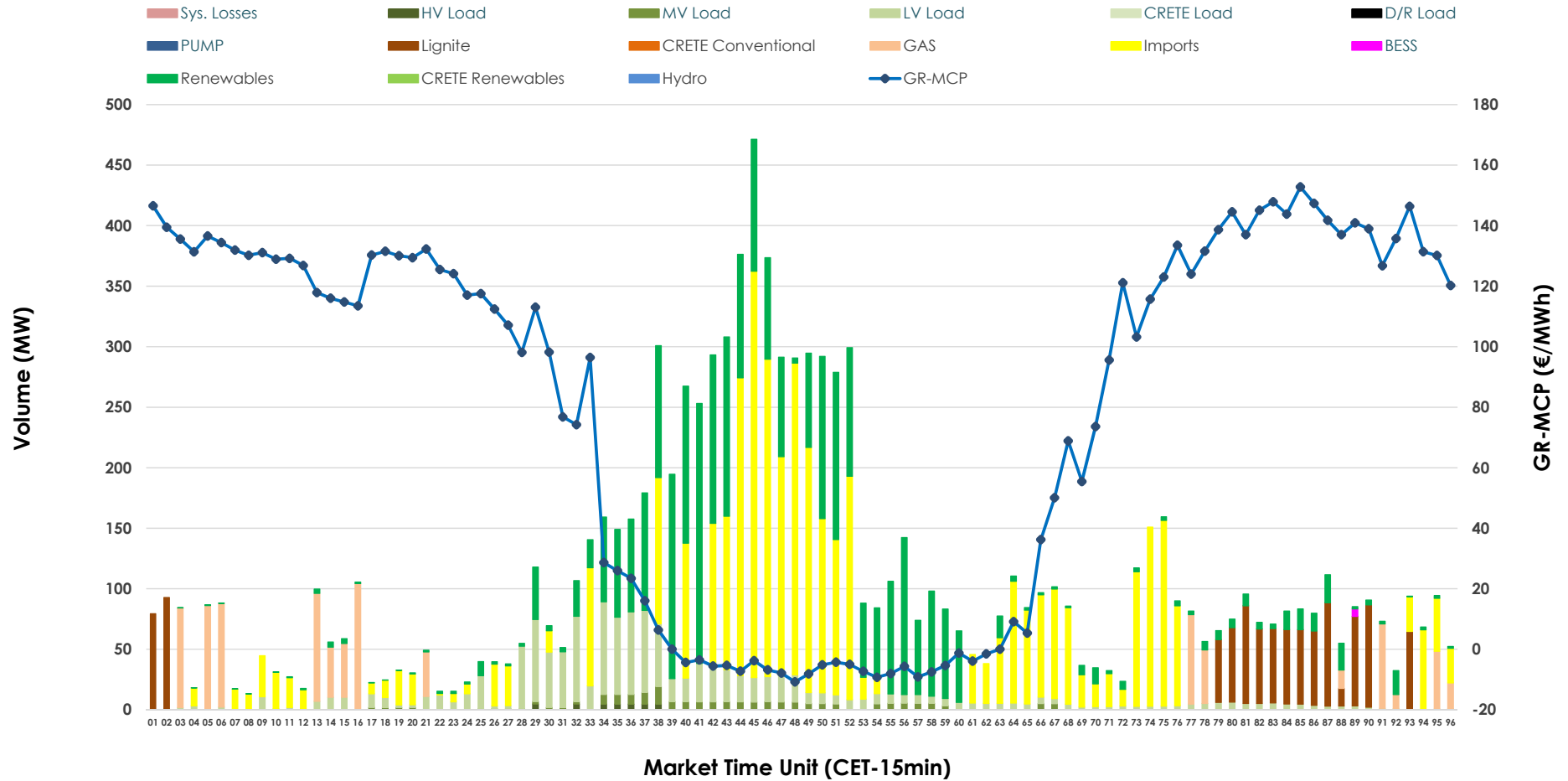


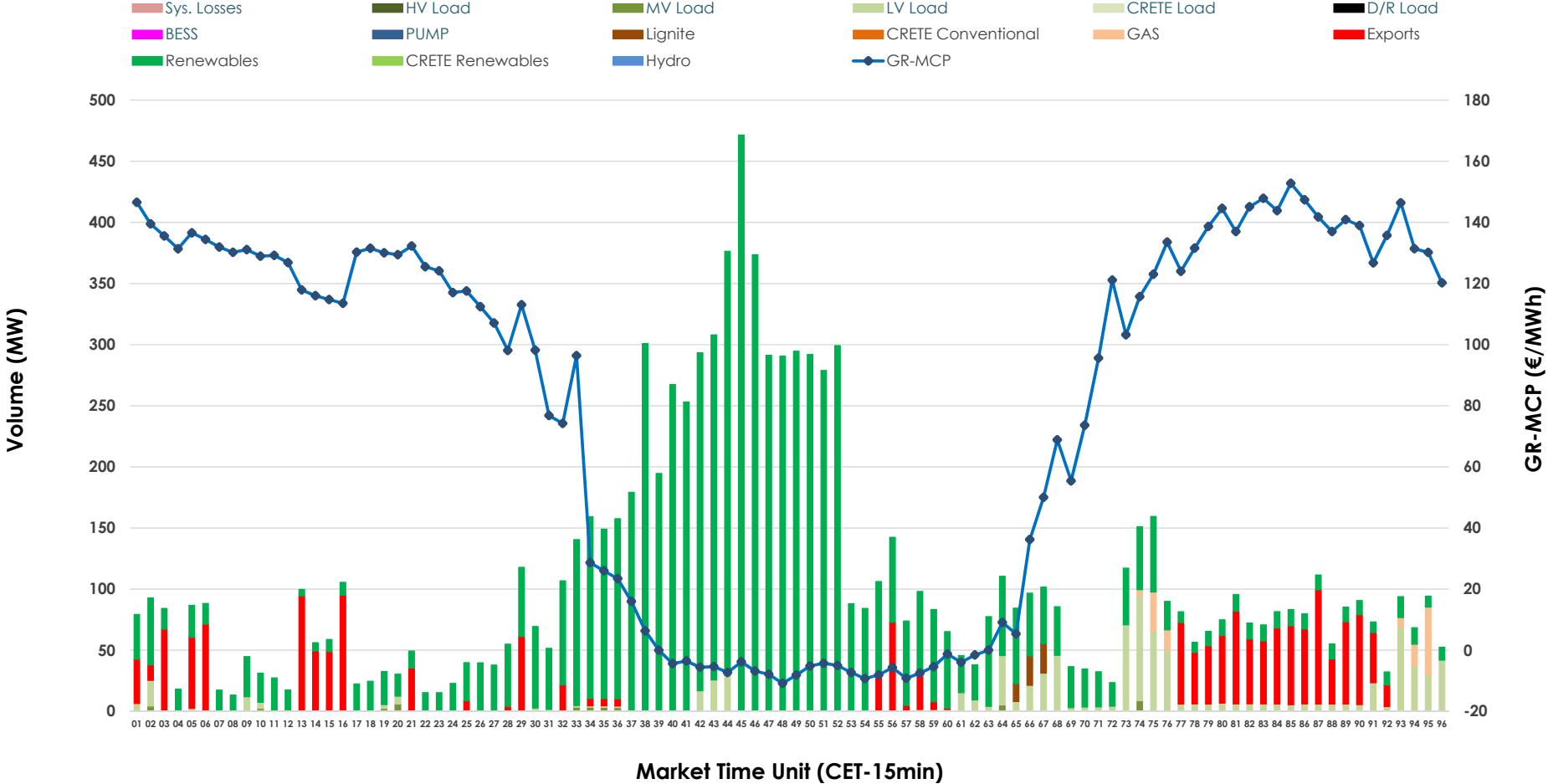


IDA '2' Market Outlook

06.06.2026 IDA '2' Market - Sell



06.06.2026 IDA '2' Market - Buy



GR Bidding Zone Weekly Figures

Delivery Day	31.05	01.06	02.06	03.06	04.06	05.06	06.06
	👇 -5%	👆 20%	👇 -7%	👇 -10%	👆 2%	👆 26%	👇 -28%
Avg.MCP (€/MWh)	86.46	103.88	96.79	86.72	88.19	111.27	80.15
Max.MCP (€/MWh)	159.14	212.74	173.58	155.00	210.77	181.27	152.78
Min.MCP (€/MWh)	-0.07	-6.67	0.75	-10.47	0.00	30.63	-10.82
	👇 -11%	👆 35%	👆 37%	👇 -49%	👆 13%	👇 -9%	👆 74%
Tot.Vol(GWh)	3.14	4.24	5.80	2.94	3.33	3.03	5.28

Trades by Order Type

Delivery Day		31.05	01.06	02.06	03.06	04.06	05.06	06.06	
Ord Price Type		Sell & Buy Trades in (GWh) per Price Type							(%)
PPT	(S)	0.000	0.000	0.000	0.000	0.000	0.000	0.000	0.00%
HBD	(S)	0.887	1.649	1.793	1.455	0.958	0.948	1.595	60.41%
BLK	(S)	0.000	0.000	0.000	0.000	0.000	0.000	0.000	0.00%
CPL	(S)	0.683	0.472	1.107	0.016	0.707	0.570	1.045	39.59%
PPT	(B)	0.000	0.000	0.000	0.000	0.000	0.000	0.000	0.00%
HBD	(B)	1.182	1.661	2.573	1.302	1.332	1.114	2.207	83.58%
BLK	(B)	0.000	0.000	0.000	0.000	0.000	0.000	0.000	0.00%
CPL	(B)	0.388	0.459	0.327	0.170	0.333	0.404	0.434	16.42%
		Sell & Buy Orders Traded per Price Type							(%)
PPT	(S)	0	0	0	0	0	0	0	0.00%
HBD	(S)	149	321	335	226	210	232	393	100.00%
BLK	(S)	0	0	0	0	0	0	0	0.00%
PPT	(B)	0	0	0	0	0	0	0	0.00%
HBD	(B)	357	592	736	418	380	483	655	100.00%
BLK	(B)	0	0	0	0	0	0	0	0.00%

- MCP** Market Clearing Price (€/MWh)
- PPT** Priority Price-Taking
- HBD** Hybrid
- BLK** Block
- CPL** Market Coupling Flow

Trade's Volume Mix

		Sell - MWh	Buy - MWh	
Lignite	(9.4%)	249	16	(0.6%)
Crete Conv.	(0.0%)	0	0	(0.0%)
Gas	(8.1%)	213	34	(1.3%)
Hydro	(0.0%)	0	0	(0.0%)
Imports	(39.6%)	1,045		
RES	(29.1%)	767	1,920	(72.7%)
Crete RES	(0.0%)	0	0	(0.0%)
BESS	(0.1%)	2	0	(0.0%)
HV Load	(0.3%)	8	0	(0.0%)
MV Load	(1.8%)	48	12	(0.4%)
LV Load	(11.7%)	308	226	(8.6%)
Crete Load	(0.0%)	0	0	(0.0%)
Pumping	(0.0%)	0	0	(0.0%)
Exports			434	(16.4%)
Sys.Losses	(0.0%)	0	0	(0.0%)
D/R Load	(0.0%)	0	0	(0.0%)

