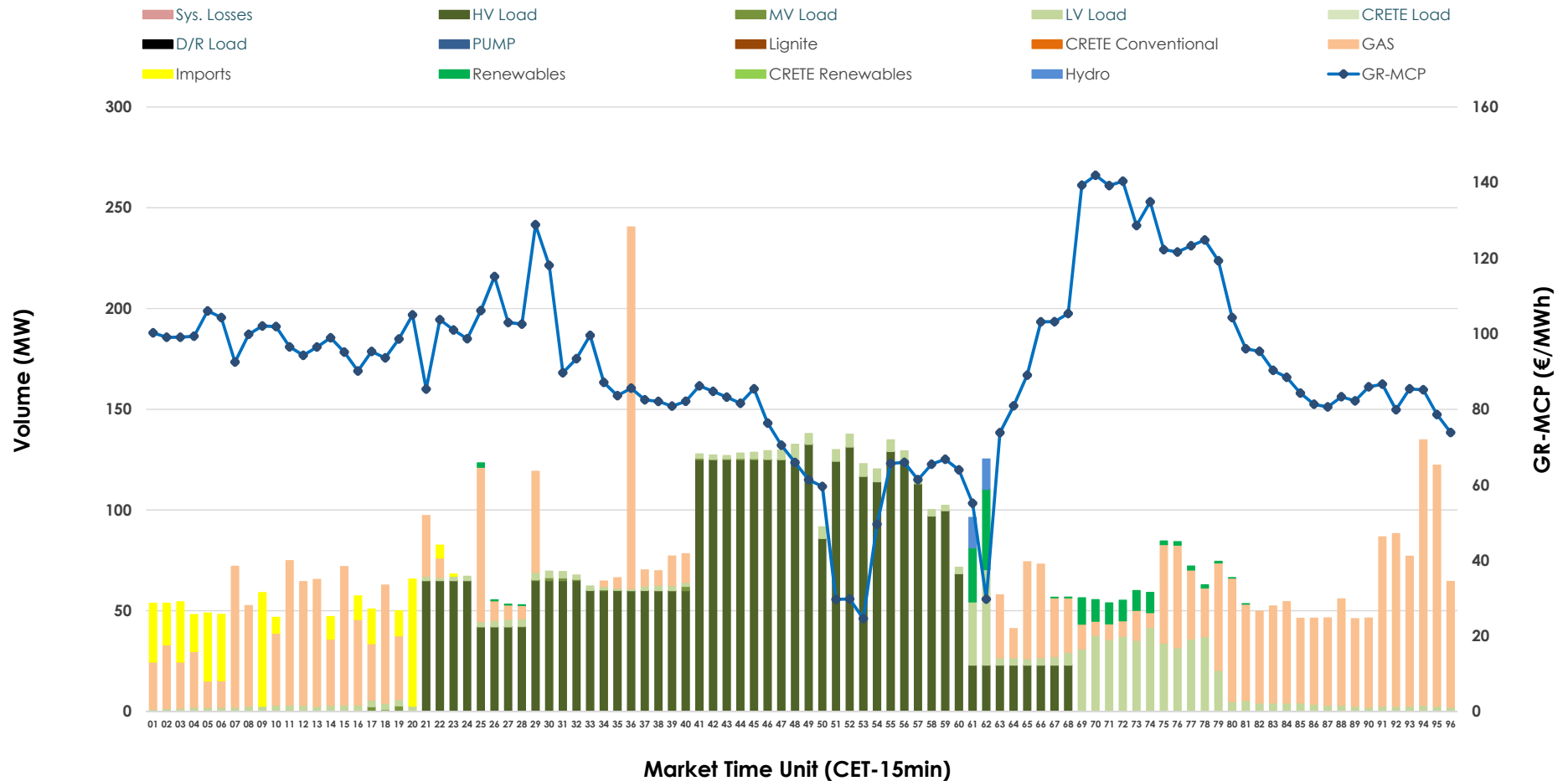


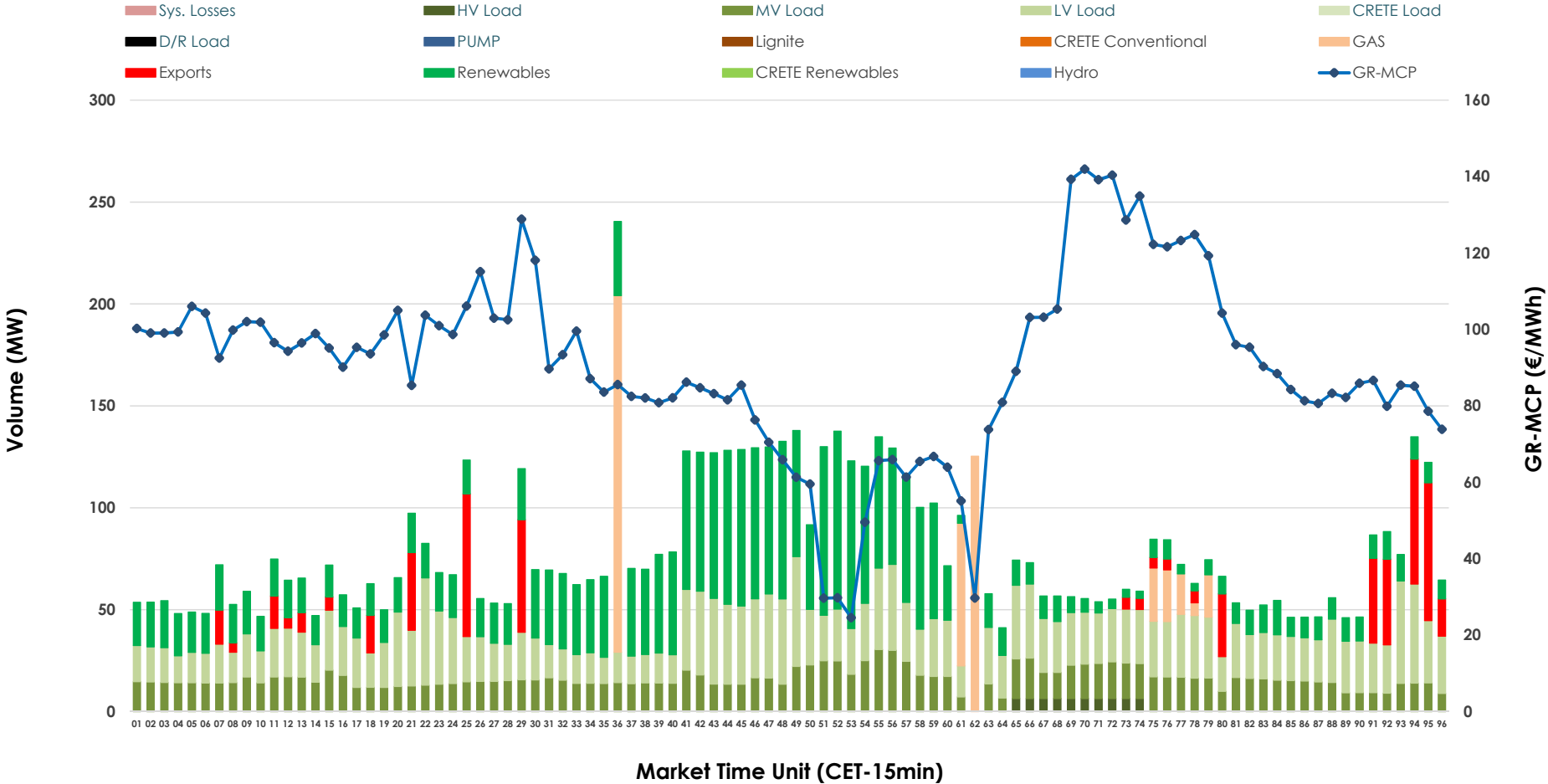


# IDA '1' Market Outlook

04.02.2026 IDA '1' Market - Sell



### 04.02.2026 IDA '1' Market - Buy



### GR Bidding Zone Weekly Figures

Delivery Day	29.01	30.01	31.01	01.02	02.02	03.02	04.02
	👇 -6%	👆 9%	👆 6%	👆 1%	👆 18%	👉 0%	👇 -23%
<b>Avg.MCP (€/MWh)</b>	85.73	93.43	98.89	100.31	118.10	118.41	90.74
<b>Max.MCP (€/MWh)</b>	177.61	163.33	152.60	143.74	251.72	216.88	141.94
<b>Min.MCP (€/MWh)</b>	-7.99	33.00	43.71	60.00	80.04	81.53	24.58
	👇 -18%	👆 134%	👇 -71%	👆 58%	👇 -36%	👆 38%	👆 12%
<b>Tot.Vol(GWh)</b>	3.58	8.38	2.46	3.89	2.48	3.43	3.83

### Trades by Order Type

Delivery Day		29.01	30.01	31.01	01.02	02.02	03.02	04.02	
<b>Ord Price Type</b>		<b>Sell &amp; Buy Trades in (GWh) per Price Type</b>							<b>(%)</b>
<b>PPT</b>	(S)	0.000	0.000	0.000	0.000	0.000	0.000	0.000	0.00%
<b>HBD</b>	(S)	1.786	4.172	1.076	1.868	0.922	1.212	1.828	95.41%
<b>BLK</b>	(S)	0.000	0.000	0.000	0.000	0.000	0.000	0.000	0.00%
<b>CPL</b>	(S)	0.003	0.016	0.156	0.077	0.320	0.501	0.088	4.59%
<b>PPT</b>	(B)	0.000	0.000	0.000	0.000	0.000	0.000	0.000	0.00%
<b>HBD</b>	(B)	1.777	3.915	1.033	1.156	1.163	1.262	1.784	93.10%
<b>BLK</b>	(B)	0.000	0.000	0.000	0.000	0.000	0.000	0.000	0.00%
<b>CPL</b>	(B)	0.013	0.273	0.200	0.789	0.079	0.451	0.132	6.90%
		<b>Sell &amp; Buy Orders Traded per Price Type</b>							<b>(%)</b>
<b>PPT</b>	(S)	0	0	0	0	0	0	0	0.00%
<b>HBD</b>	(S)	153	239	148	73	81	124	273	100.00%
<b>BLK</b>	(S)	0	0	0	0	0	0	0	0.00%
<b>PPT</b>	(B)	0	0	0	0	0	0	0	0.00%
<b>HBD</b>	(B)	932	771	642	726	732	920	1081	100.00%
<b>BLK</b>	(B)	0	0	0	0	0	0	0	0.00%

**MCP** Market Clearing Price (€/MWh)  
**PPT** Priority Price-Taking  
**HBD** Hybrid  
**BLK** Block  
**CPL** Market Coupling Flow

### Trade's Volume Mix

		Sell - MWh		Buy - MWh	
<b>Lignite</b>	(0.0%)	0	0	0	(0.0%)
<b>Crete Conv.</b>	(0.0%)	0	0	0	(0.0%)
<b>Gas</b>	(35.4%)	678	117		(6.1%)
<b>Hydro</b>	(0.4%)	8	0		(0.0%)
<b>Imports</b>	(4.6%)	88			
<b>RES</b>	(1.9%)	36	663		(34.6%)
<b>Crete RES</b>	(0.0%)	0	0		(0.0%)
<b>HV Load</b>	(48.1%)	922	16		(0.8%)
<b>MV Load</b>	(0.2%)	4	371		(19.4%)
<b>LV Load</b>	(9.5%)	182	617		(32.2%)
<b>Crete Load</b>	(0.0%)	0	0		(0.0%)
<b>Pumping</b>	(0.0%)	0	0		(0.0%)
<b>Exports</b>				132	(6.9%)
<b>Sys.Losses</b>	(0.0%)	0	0		(0.0%)
<b>D/R Load</b>	(0.0%)	0	0		(0.0%)

