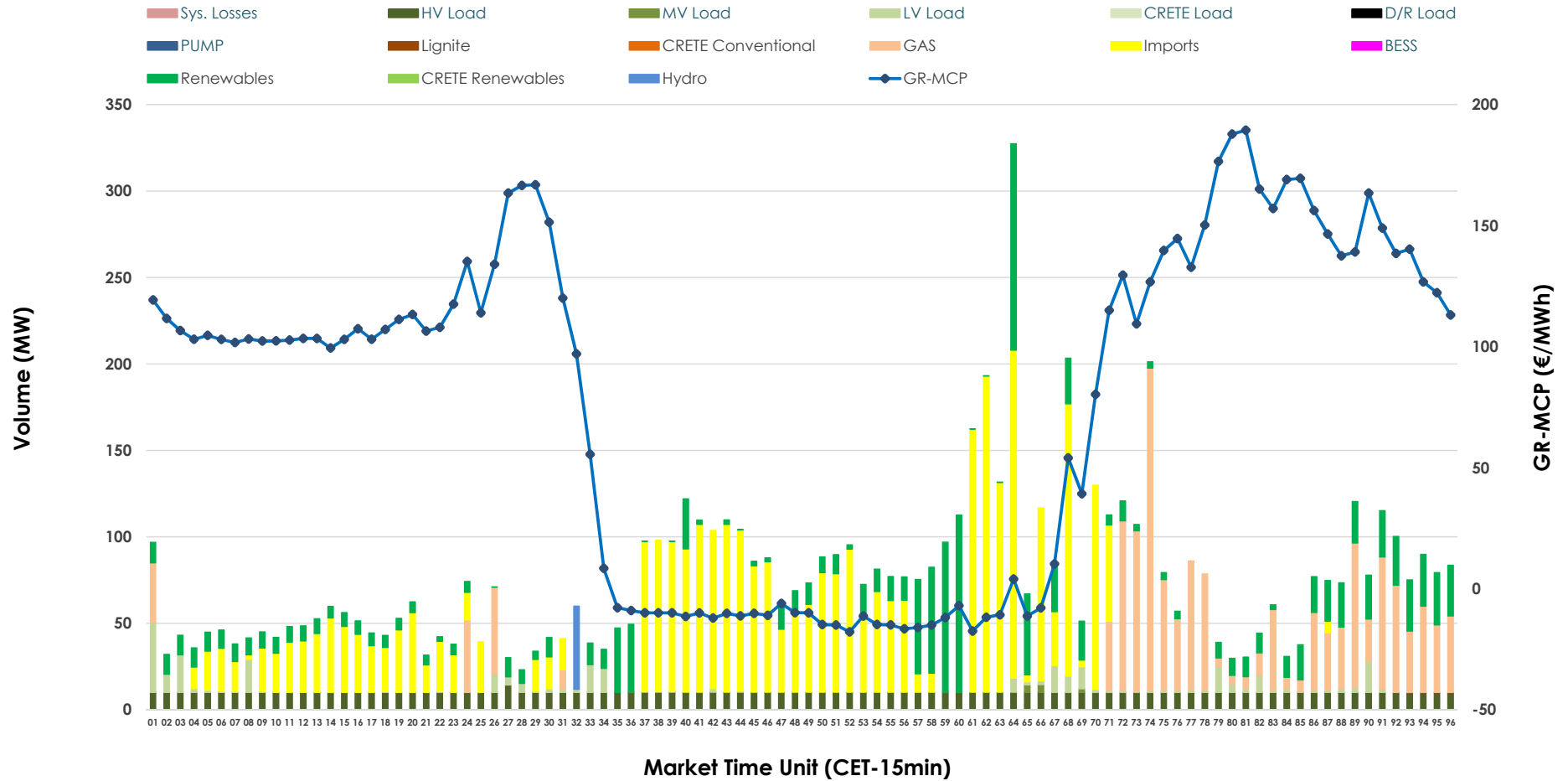


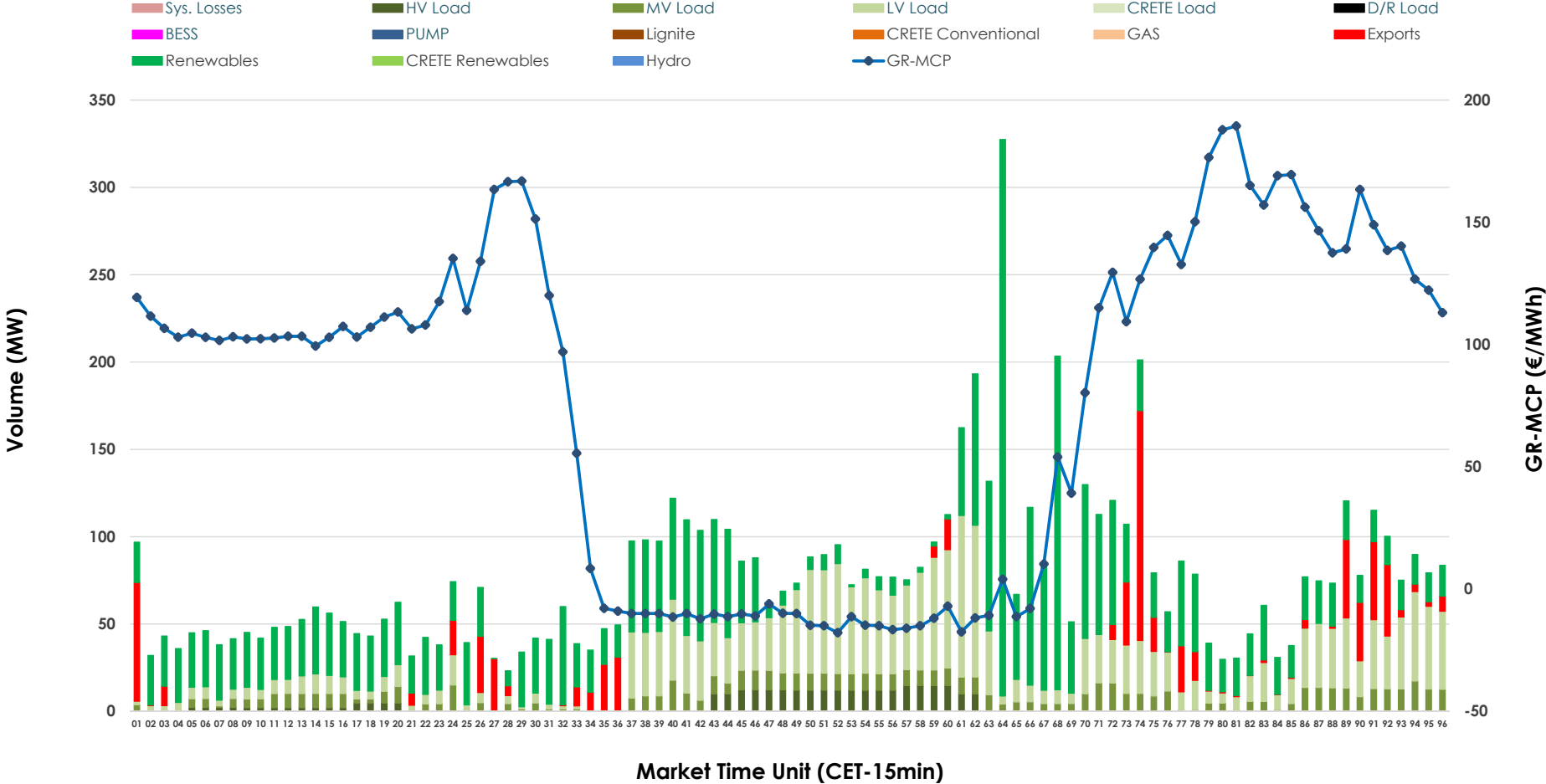


# IDA '1' Market Outlook

08.04.2026 IDA '1' Market - Sell



### 08.04.2026 IDA '1' Market - Buy



### GR Bidding Zone Weekly Figures

Delivery Day	02.04	03.04	04.04	05.04	06.04	07.04	08.04
	👉 -13%	👉 -5%	👇 -46%	👇 -56%	👆 116%	👉 24%	👉 -7%
<b>Avg.MCP (€/MWh)</b>	135.24	128.53	69.11	30.63	66.14	82.25	76.84
<b>Max.MCP (€/MWh)</b>	211.87	216.28	185.47	138.01	183.21	201.50	189.41
<b>Min.MCP (€/MWh)</b>	103.00	14.27	-7.10	-50.00	-34.93	-19.78	-17.84
	👇 -39%	👉 2%	👉 -8%	👉 20%	👉 -33%	👉 -1%	👉 -1%
<b>Tot.Vol(GWh)</b>	5.03	5.11	4.69	5.62	3.78	3.75	3.70

### Trades by Order Type

Delivery Day		02.04	03.04	04.04	05.04	06.04	07.04	08.04	
<b>Ord Price Type</b>		<b>Sell &amp; Buy Trades in (GWh) per Price Type</b>							<b>(%)</b>
<b>PPT</b>	(S)	0.000	0.000	0.000	0.000	0.000	0.000	0.000	0.00%
<b>HBD</b>	(S)	1.798	1.416	1.713	0.741	0.730	1.032	1.045	56.52%
<b>BLK</b>	(S)	0.000	0.000	0.000	0.000	0.000	0.000	0.000	0.00%
<b>CPL</b>	(S)	0.717	1.137	0.629	2.069	1.158	0.844	0.804	43.48%
<b>PPT</b>	(B)	0.000	0.000	0.000	0.000	0.000	0.000	0.000	0.00%
<b>HBD</b>	(B)	1.223	1.302	1.153	2.734	1.496	1.451	1.672	90.42%
<b>BLK</b>	(B)	0.000	0.000	0.000	0.000	0.000	0.000	0.000	0.00%
<b>CPL</b>	(B)	1.292	1.251	1.190	0.077	0.392	0.424	0.177	9.58%
		<b>Sell &amp; Buy Orders Traded per Price Type</b>							<b>(%)</b>
<b>PPT</b>	(S)	0	0	0	0	0	0	0	0.00%
<b>HBD</b>	(S)	277	381	412	120	164	122	247	100.00%
<b>BLK</b>	(S)	0	0	0	0	0	0	0	0.00%
<b>PPT</b>	(B)	0	0	0	0	0	0	0	0.00%
<b>HBD</b>	(B)	831	586	788	412	449	865	778	100.00%
<b>BLK</b>	(B)	0	0	0	0	0	0	0	0.00%

- MCP** Market Clearing Price (€/MWh)
- PPT** Priority Price-Taking
- HBD** Hybrid
- BLK** Block
- CPL** Market Coupling Flow

### Trade's Volume Mix

		Sell - MWh	Buy - MWh	
<b>Lignite</b>	(0.0%)	0	0	(0.0%)
<b>Crete Conv.</b>	(0.0%)	0	0	(0.0%)
<b>Gas</b>	(19.2%)	356	0	(0.0%)
<b>Hydro</b>	(0.7%)	12	0	(0.0%)
<b>Imports</b>	(43.5%)	804		
<b>RES</b>	(19.6%)	362	864	(46.7%)
<b>Crete RES</b>	(0.0%)	0	0	(0.0%)
<b>BESS</b>	(0.0%)	0	0	(0.0%)
<b>HV Load</b>	(13.0%)	241	73	(3.9%)
<b>MV Load</b>	(0.2%)	4	174	(9.4%)
<b>LV Load</b>	(3.8%)	70	562	(30.4%)
<b>Crete Load</b>	(0.0%)	0	0	(0.0%)
<b>Pumping</b>	(0.0%)	0	0	(0.0%)
<b>Exports</b>			177	(9.6%)
<b>Sys.Losses</b>	(0.0%)	0	0	(0.0%)
<b>D/R Load</b>	(0.0%)	0	0	(0.0%)

