

FORWARD ELECTRICITY PRODUCTS AUCTIONS SYSTEM

MONTHLY WHOLESALE AND RETAIL PENETRATION AND MARKET SHARE REPORT

March 2018



Table of Contents

.....	1
1. Establishment of the Forward Electricity Products Auctions System	6
2. FEPAS Register.....	6
2.1 Eligible Suppliers	6
2.2 Eligible Traders.....	7
2.3 Sellers.....	7
3. Yearly Quantities, Products Segmentation and Auctions Schedule.....	8
4. Auctions.....	11
4.1 Auction «2016A01».....	11
4.2 Auction «2017A01».....	14
4.3 Auction «2017A02».....	17
4.4 Auction «2017A03».....	20
4.5 Auction «2017A04».....	23
4.6 Auction «2018A01».....	26
5. Secondary Market	29
6. Nominations of Forward Monthly Sub-products	32
7. Supplementary Clearing of the Nominated Forward Daily/Hourly Sub-products in the Day-Ahead Market (DAS)	45
Weighted Average Price of Usage Declarations	45
Benefit of the Eligible Suppliers and Traders.....	46
Utilization Factor of Daily Sub-Products in DAS.....	48
Load Declaration Analysis in DAS Supplementary Clearing	53
8. Consumption Market Shares Evolution	55
Market Shares in Day-Ahead Scheduling (DAS)	55



Disclaimer

As part of its responsibilities as the Operator of the Forward Electricity Products Auction System (FEPAS) and according to the provisions of the relevant regulatory and legal framework, the Market Operator for Electricity S.A. (LAGIE) publishes the “Monthly Wholesale and Retail Penetration and Market Share Report”. The current report includes historical data concerning the operation of FEPAS which are derived from the records of LAGIE kept for the purposes of FEPAS. In addition, it includes Wholesale and Retail market data which are provided by the Transmission System Operator (ADMIE), the Hellenic Electricity Distribution Network Operator S.A. (HEDNO) and the AIA Electricity Grid Manager (EGM) for the purposes of FEPAS.

LAGIE makes every effort to ensure the correctness and accuracy of the data of its responsibility included in this Report. These data are very volatile electricity market parameters and are not under any circumstances a piece of commercial, business, legal or any other type of advice/recommendation of LAGIE to any party. LAGIE or any other person or legal entity acting on its behalf, bare no direct or indirect responsibility for any damage caused to any party by the use of the data included in the current report.

1. Establishment of the Forward Electricity Products Auctions System

The Forward Electricity Products Auctions System (FEPAS) was established by virtue of Law 4336/2015 and Law 4389/2016 in order to promote healthy competition in the Greek wholesale and retail electricity markets and decrease the relative market shares of the Public Power Corporation S.A. (PPC) under 50% by 2020. The FEPAS provides access for PPC competitors to Forward Electricity Products (with physical delivery obligation to the current day-ahead market structure) so that competitive portfolios to be deployed. The Operator of Electricity Market S.A. (LAGIE) is appointed as the Operator of the FEPAS having under its responsibility the registration of Market Participants, the operation of the Auctions, the Secondary Market, the Nominations and the Supplementary Clearing of the Forward Product's quantities taking into consideration the Nominations and the relative Auction Prices and System Marginal Prices.

The Power Exchange Code for Forward Electricity Products Auctions System (PECFEPAS) was approved by the Regulatory Authority of Greece by September 2016 (RAE Decision 329/2016). The first Auction for a Forward Electricity Product was conducted by LAGIE at 25/10/2016.

2. FEPAS Register

The Alternative Suppliers, Traders and the PPC are participating in FEPAS by accepting the terms of the PECFEPAS and entering at the same time the FEPAS Register as Eligible Suppliers, Eligible Traders and Seller. Currently the FEPAS Register includes thirty-three (33) Participants, i.e.: 24 Eligible Suppliers, 8 Eligible Traders and PPC as the single-seller of the Forward Products. Until the delivery month this report refers to the FEPAS Register consisted of the following Participants:

2.1 Eligible Suppliers

A/A	PARTICIPANT	REGISTERED
1	ALPIQ ENERGY SE	24.02.2017
2	ECONOMIC GROWTH ΑΝΩΝΥΜΗ ΕΤΑΙΡΕΙΑ ΕΞΕΙΔΙΚΕΥΜΕΝΩΝ ΜΕΛΕΤΩΝ ΚΑΙ ΣΥΜΒΟΥΛΕΥΤΙΚΩΝ ΥΠΗΡΕΣΙΩΝ	28.11.2016
3	ENEL GREEN POWER HELLAS ΠΡΟΜΗΘΕΙΑ Α.Ε.	22.12.2017
4	ELPEDISON ΠΑΡΑΓΩΓΗ ΗΛΕΚΤΡΙΚΗΣ ΕΝΕΡΓΕΙΑΣ ΑΝΩΝΥΜΗ ΕΤΑΙΡΕΙΑ	18.10.2016
5	EUNICE TRADING A.E.	14.07.2017
6	GEN-I ATHENS Μ.Ε.Π.Ε.	03.07.2017
7	GREEK ENVIRONMENTAL & ENERGY NETWORK ΑΝΩΝΥΜΗ ΕΤΑΙΡΕΙΑ	12.10.2016
8	GREENSTEEL-CEDALION COMMODITIES A.E.	16.11.2016
9	INTERBETON CONSTRUCTION MATERIALS S.A.	19.10.2016
10	KEN ΠΑΡΑΓΩΓΗ ΚΑΙ ΕΜΠΟΡΙΑ ΕΝΕΡΓΕΙΑΚΩΝ ΠΡΟΪΟΝΤΩΝ ΑΝΩΝΥΜΗ ΕΤΑΙΡΕΙΑ	05.01.2017
11	NATURAL GAS - HELLENIC ENERGY COMPANY	06.10.2017
12	NECO A.E.	20.10.2017
13	NOVAERA ENERGY A.E.	18.10.2016
14	NRG TRADING HOUSE S.A.	18.10.2016
15	PROTERGIA ΘΕΡΜΟΗΛΕΚΤΡΙΚΗ ΑΝΩΝΥΜΗ ΕΤΑΙΡΕΙΑ	03.07.2017
16	VOLTERRA A.E.	19.10.2016
17	VOLTON ΕΛΛΗΝΙΚΗ ΕΝΕΡΓΕΙΑΚΗ ΑΝΩΝΥΜΗ ΕΤΑΙΡΕΙΑ	05.01.2017

A/A	PARTICIPANT	REGISTERED
18	WATT AND VOLT A.E.	19.10.2016
19	BIENER A.E. ΕΝΕΡΓΕΙΑΚΕΣ ΕΠΙΧΕΙΡΗΣΕΙΣ ΑΝΩΝΥΜΗ ΕΤΑΙΡΕΙΑ	18.10.2016
20	ΕΛΛΗΝΙΚΑ ΤΑΧΥΔΡΟΜΕΙΑ ΑΕ	19.10.2016
21	ZENIO GAS & LIGHT	20.09.2017
22	ΗΡΩΝ ΘΕΡΜΟΗΛΕΚΤΡΙΚΗ Α.Ε.	18.10.2016
23	ΜΥΤΙΛΗΝΑΙΟΣ ΑΝΩΝΥΜΟΣ ΕΤΑΙΡΕΙΑ - ΟΜΙΛΟΣ ΕΠΙΧΕΙΡΗΣΕΩΝ	07.07.2017
24	ΟΤΕ ΑΚΙΝΗΤΑ ΑΝΩΝΥΜΗ ΕΤΑΙΡΕΙΑ	16.11.2016

2.2 Eligible Traders

A/A	PARTICIPANT	REGISTERED
1	DANSKE COMMODITIES A/S	26.09.2017
2	ELEKTRICNI FINANCNI TIM d.o.o.	14.11.2017
3	ENSCO S.A.	15.02.2017
4	EZPADA S.R.O.	28.03.2017
5	LE TRADING A.S.	28.09.2017
6	SENTRADE A.E.	25.10.2016
7	ΙΩΑΝΝΗΣ ΠΑΝΑΓΙΩΤΟΠΟΥΛΟΣ ΣΟΛΑΡΙΣ ΕΝΕΡΓΕΙΑΚΗ ΑΝΩΝΥΜΗ ΕΤΑΙΡΕΙΑ	28.11.2017
8	ΤΕΡΝΑ ΕΝΕΡΓΕΙΑΚΗ ΑΒΕΤΕ	14.11.2017

2.3 Sellers

I/I	PARTICIPANT	REGISTERED
1	ΔΗΜΟΣΙΑ ΕΠΙΧΕΙΡΗΣΗ ΗΛΕΚΤΡΙΣΜΟΥ Α.Ε.	19.10.2016

3. Yearly Quantities, Products Segmentation and Auctions Schedule

According to Law 4389/2016 and the provisions of PECFEPAS the Yearly Quantities released as Forward Electricity Products in the Auctions are calculated yearly, on the basis of the relative decrease of the PPC market shares by the end of each year, taking into consideration the consumption volume of the Interconnected System and Network. Table.1 summarizes the targets set out for the yearly decrease of PPC market shares having as a reference point the PPC market share of August 2015.

Table.1 Yearly targets for PPC market share reduction

	Mandatory Pool				EU Target Model	
Month / Year	08/2015	12/2016	12/2017	12/2018	12/2019	2020
Retail market decrease target		-8%	-12%	-13%	-13%	
Retail Market Share	95,24%	87,24%	75,24%	62,24%	49,24%	

The Yearly Quantities to be auctioned are the result of the “Yearly targets for PPC market share reduction” multiplied by the total volume of the Interconnected System of the previous year. The Yearly Quantities to be auctioned, their segmentation into Forward Electricity Products with physical delivery and the Auctions’ Schedule, are approved by the Regulatory Authority of Energy (RAE), following the relative LAGIE proposals (Article 138, Law 4389/2016).

Table.2 Updated Yearly Quantities of Electricity Products to be auctioned

	Mandatory Pool				EU Target Model	
Month / Year	08/2015	12/2016	12/2017	12/2018	12/2019	2020
Yearly Quantities (%) into Forward Electricity Products Auctions		8%	16%	19%	22%	

According to RAE Decisions 353/2016, 619/2016, and 1091/2017, following a Public Consultation on LAGIE’s proposals, the yearly quantities for 2016, 2017 and 2018 were set to 460 MWh/h, 681 MWh/h and 1126 MWh/h respectively. Moreover, these Yearly Quantities were segmented into distinct Forward Electricity Products and the Auctions’ Timetable was determined, as depicted in Table 3.

According to Article 135 of Law 4389/2016 as amended and is in force by article 101 of Law 4472/2017, in case the decrease in PPC’S share in the retail market of the Interconnected System is less or more than two (2) percentage points from the decrease target of the relevant semester, as defined by dividing the yearly decrease target into half year decrease targets, the Regulatory Authority – according to the Provisions of Article 138 of Law 4389/2016 - increases or decreases equivalently the quantities to be auctioned during the first semester after the reference semester.

According to Article 101 of Law N.4472/2017, the Yearly Quantities of Electricity Products to be auctioned, as a percentage (%) of the total volume of the Interconnected System of the previous year depicted in Table.2, are re-adjusted. The Auction Schedule has been modified by RAE decision **817/2017**, following the relative LAGIE proposal, taking into account both the Yearly Quantities increment by four (4) percentage points according to the Provisions of Law N.4472/2017 (referring to quantities with physical delivery corresponding to December 2017), and the Yearly Quantities increment as a result of the deviation of 4.25% from Yearly decrease target of PPC’S shares confirmed in June 2017 by the Market Operator in accordance with the provisions of article 135 of Law 4389/2016. Table 3 depicts the updated Auctions’ Schedule.

The Auction Schedule for the year 2018 has been modified by RAE decision **82/2018**, following the relative LAGIE proposal, taking into account the Yearly Quantities increment as a result of the deviation of 10.1% target of PPC’S shares concerning the second Semester of 2017 which has confirmed in January 2018 by the Market Operator in accordance with the provisions of article 135 of Law 4389/2016. Table 3 depicts the updated 2018 Auctions’ Schedule.

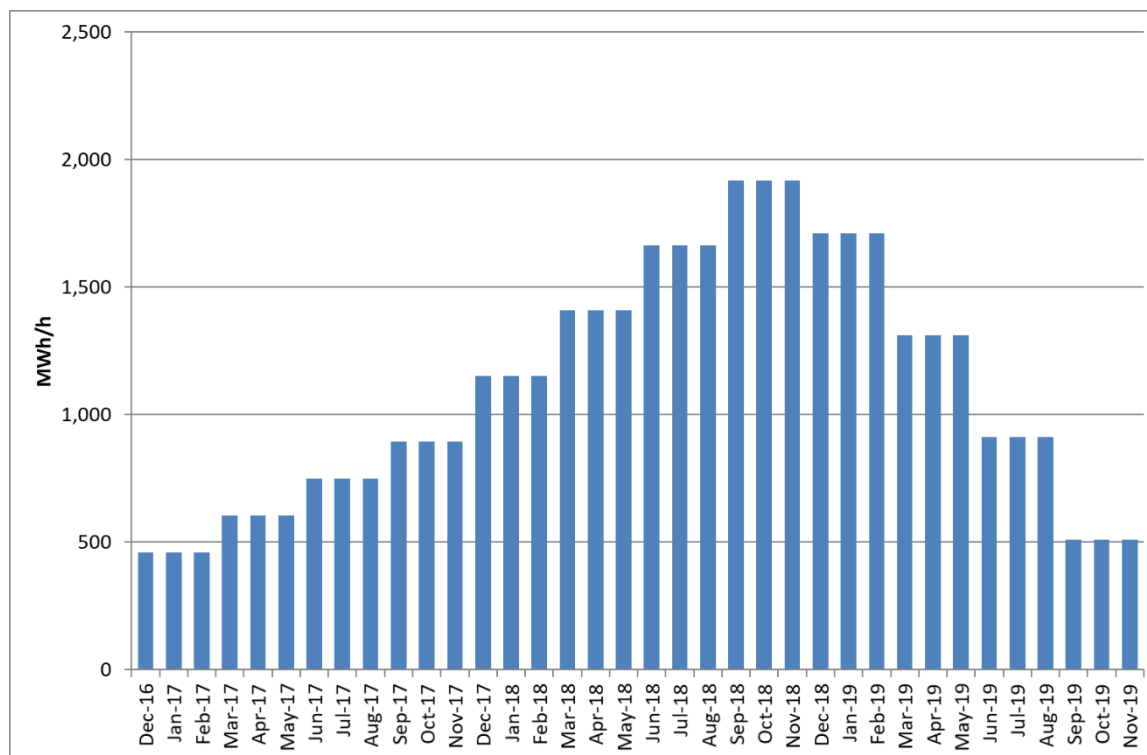
Table.3 Forward Products and Auctions Schedule

Forward Product	Volume (MWh)	Quantity (MWh/h)	Physical Delivery Period	Auction Day	RAE Decision
2016A01P01*	4.029.600	460	20161201-20171130	25/10/2016	353/2016
2017A01P01*	1.270.200	145	20170301-20180228	31/01/2017	619/2016
2017A02P02*	1.270.200	145	20170601-20180531	26/04/2017	619/2016
2017A03P03*	1.270.200	145	20170901-20180831	19/07/2017	619/2016
2017A04P04*	6.289.680	718	20171201-20181130	25/10/2017	817/2017
2018A01P01*	3.504.000	400	20180301-20190228	07/02/2018	82/2018
2018A02P02	3.504.000	400	20180601-20190531	18/04/2018	82/2018
2018A03P03	3.504.000	400	20180901-20190831	18/07/2018	82/2018
2018A04P04	4.476.360	511	20181201-20191130	17/10/2018	82/2018

(*) Forward Products already auctioned by end of January 2018.

Figure.1 depicts the segmentation of the Yearly Quantities into Forward Electricity Products.

Figure.1 Segmentation of approved Forward Electricity Products to the Physical Delivery Months



4. Auctions

According to the relative RAE decisions 353/216, 619/2016, 817/2017, and 82/2018 (summarized in Table.3) during the fifteen (16) months LAGIE has conducted three (6) Auctions for five distinct Forward Products.

4.1 Auction «2016A01»

The Auction «2016A01» was conducted at October 25th 2016. The product «2016A01P01» was auctioned according to the approved Technical Specifications (RAE Decision 393/2016). The Technical Details of the Auction Specifications, the Auctions Procedure and Results are summarized as follows.

Technical Specifications and procedure for the Auction «2016A01»

Auction	Required Participation Guarantees (€)	Auction Type	Gate Open	Gate Close	Gate Extensions /Duration
2016A01	451.758,50	American / Yankee Auction	25/10/2016 12:00	25/10/2016 12:30	Yes/ 3minutes

Bids Technical Specifications for the Auction «2016A01»

Auction	Minimum Allocation Quantity (MWh/h)	Minimum Bid Quantity (MWh/h)	Minimum Bid Price Tic (€/MWh)
2016A01	1	1	0,01

Specifications of Forward Product «2016A0P01»

Forward Product	Volume (MWh)	Quantity (MWh/h)	Physical Delivery Period	Reserve Price (€/MWh)
2016A01P01	4.029.600	460	01/12/2016-30/11/2017	37,37*

(*) According to the Ministerial Decision, ΑΠΕΗΛ/Γ/Φ1/οικ.182348/24.08.2016 (Government Gazette B' 2848)

Summary of Auction Bids for Auction «2016A01»

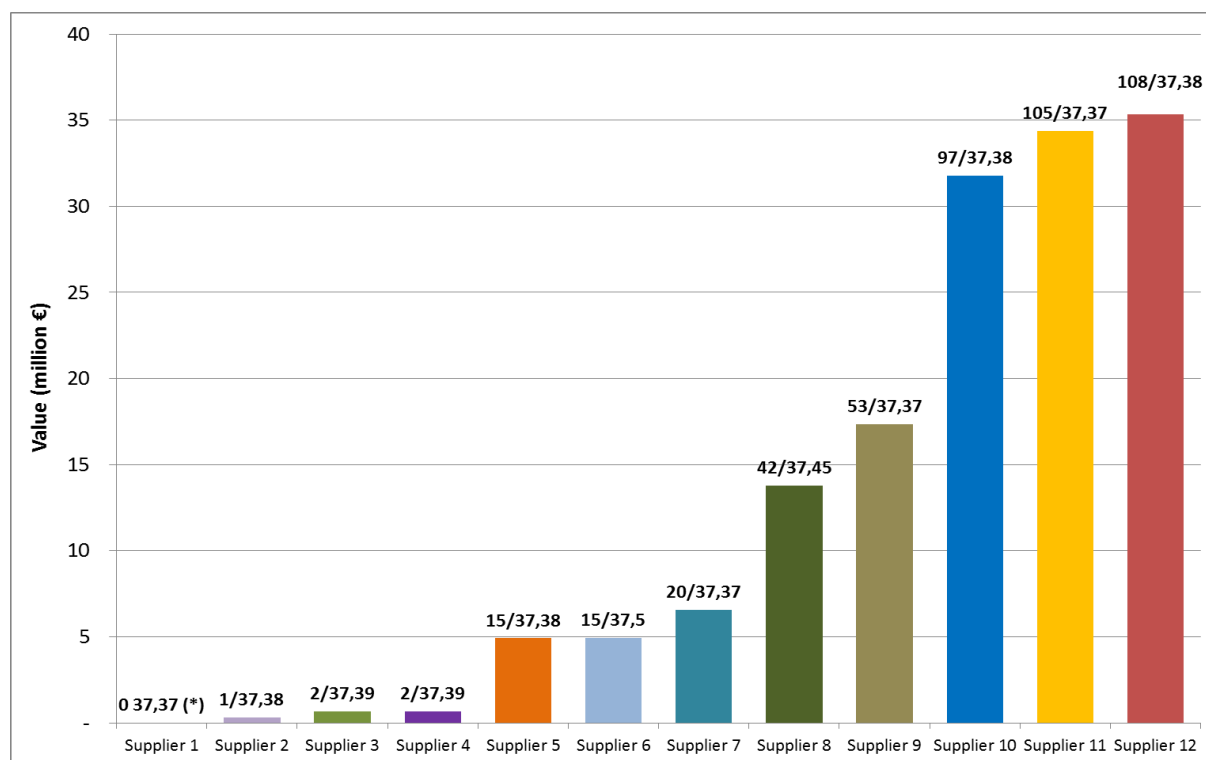
Auction	Participants	Valid Bids	Invalid Bids	Total Allocated Quantity
2016A01	12	27	0	460 (100%)
	Best Bid Price	Max Allocated Quantity	Max Requested Quantity	Total Requested Quantity /Total Allocated Quantity
	37,50	108	108	473/ 460

Summary of Auction Process for Auction «2016A01»

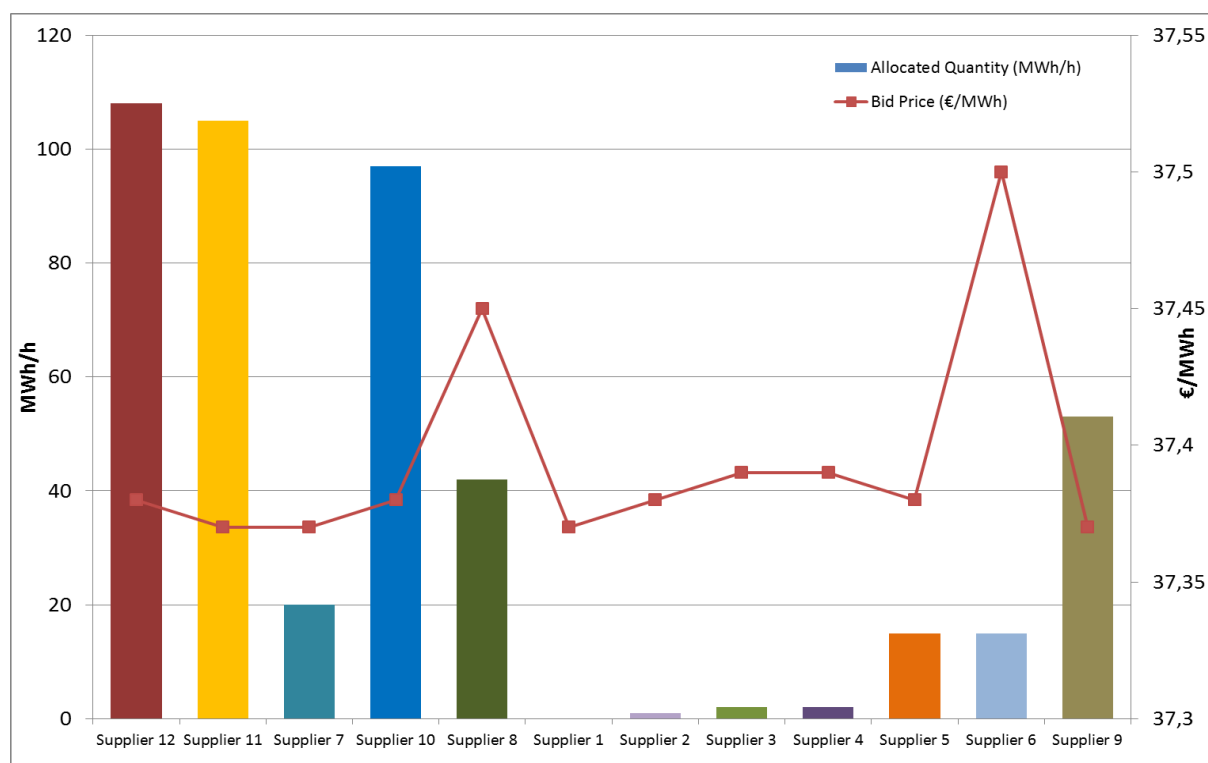
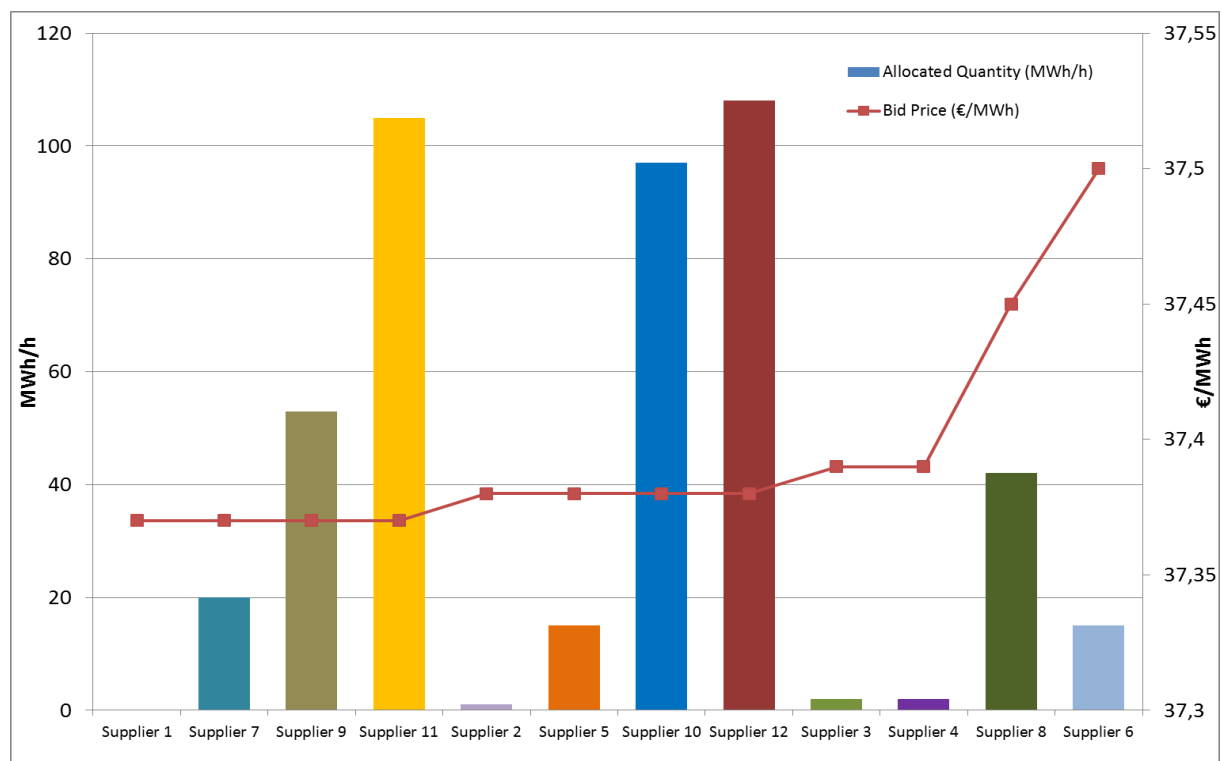
Auction	Gate Open	Gate Close	Extensions	Objections
2016A01	25/10/2016 12:00	25/10/2016 12:42	4	0

Table.4 Bids Final Classification Table for Auction «2016A01»

Bid ID	Requested Quantity	Allocated Quantity	Bid Price	Date	Time
250531	15	15	37,50	25/10/2016	12:32:43
250505	42	42	37,45	25/10/2016	12:00:27
250519	2	2	37,39	25/10/2016	12:23:02
250528	2	2	37,39	25/10/2016	12:27:13
250498	108	108	37,38	25/10/2016	12:00:09
250504	97	97	37,38	25/10/2016	12:00:24
250530	15	15	37,38	25/10/2016	12:32:24
250518	1	1	37,38	25/10/2016	12:22:21
250499	105	105	37,37	25/10/2016	12:00:09
250534	53	53	37,37	25/10/2016	12:38:16
250500	23	20	37,37	25/10/2016	12:00:11
250510	10	0	37,37	25/10/2016	12:02:03

Figure.2 Valuation of Bids Allocated for Auction «2016A01P01»


(*) Allocated Quantity (MWh/h) and Bid Price (€/MWh)

Figure.3 Final Classification of Bids for Auction «2016A01» (sorted to the submission time)

Figure.4 Final Classification of Bids for Auction «2016A01» (sorted to the Bid Price)


4.2 Auction «2017A01»

The Auction «2017A01» was conducted at January 31st 2017. The product «2017A01P01» was auctioned according to the approved Technical Specifications (RAE Decision 21/2017). The Technical Details of the Auction Specifications, the Auctions Procedure and Results are summarized as follows.

Technical Specifications and procedure for the Auction «2017A01»

Auction	Required Participation Guarantees (€)	Auction Type	Gate Open	Gate Close	Gate Extensions /Duration
2017A01	142.402,13	American / Yankee Auction	31/01/2017 12:00	31/01/2017 12:30	Yes/ 3mins

Bids Technical Specifications for the Auction «2017A01»

Auction	Minimum Allocation Quantity (MWh/h)	Minimum Bid Quantity (MWh/h)	Minimum Bid Price Tic (€/MWh)
2017A01	1	1	0,01

Specifications of Forward Product «2017A0P01»

Forward Product	Volume (MWh)	Quantity (MWh/h)	Physical Delivery Period	Reserve Price (€/MWh)
2017A0P01	1.270.200	145	01/03/2017-28/02/2018	37,37*

(*) According to the Ministerial Decision, ΑΠΕΗΛ/Γ/Φ1/οικ.182348/24.08.2016 (Government Gazette B' 2848)

Summary of Auction Bids for Auction «2017A01»

Auction	Participants	Valid Bids	Invalid Bids	Total Allocated Quantity
2017A01	14	2.214	506	145 (100%)
	Best Bid Price	Max Allocated Quantity	Max Requested Quantity	Total Requested Quantity /Total Allocated Quantity
	41,14	33	48	161/145

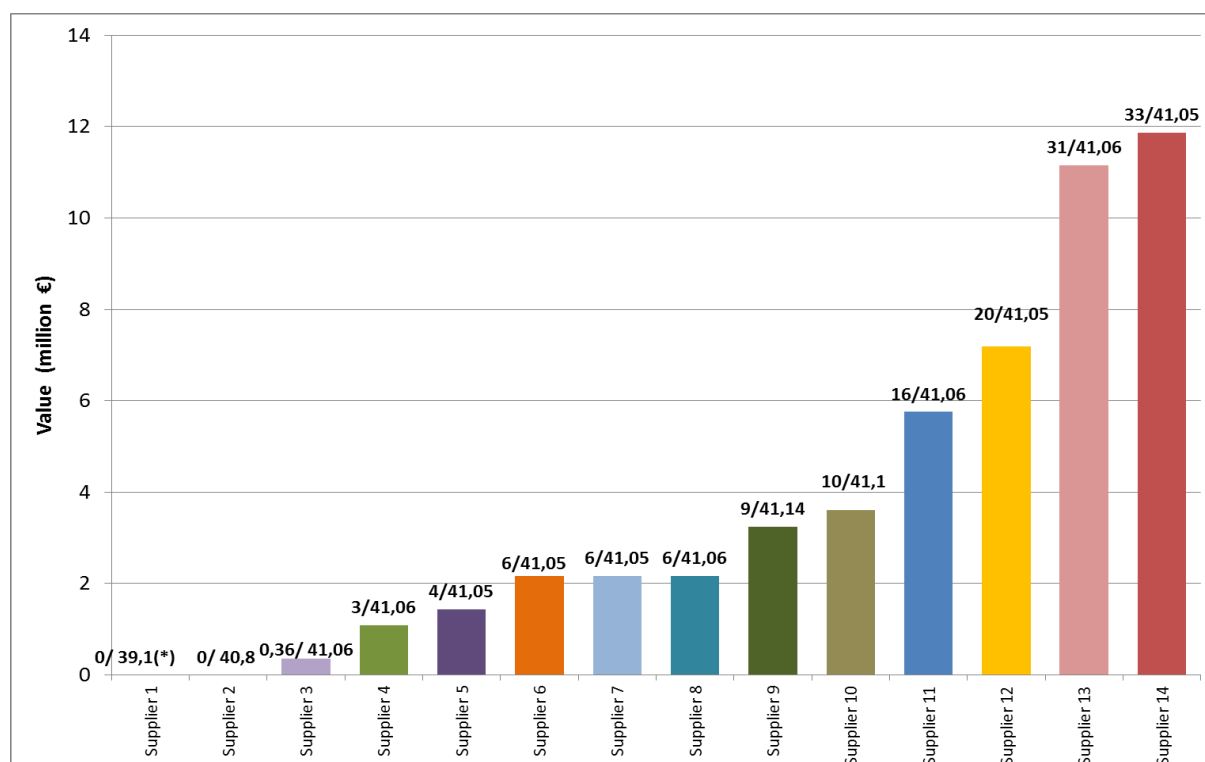
Summary of Auction Process for Auction «2017A01»

Auction	Gate Open	Gate Close	Extensions	Objections
2017A01	31/01/2017 12:00	31/01/2017 17:30	100	0

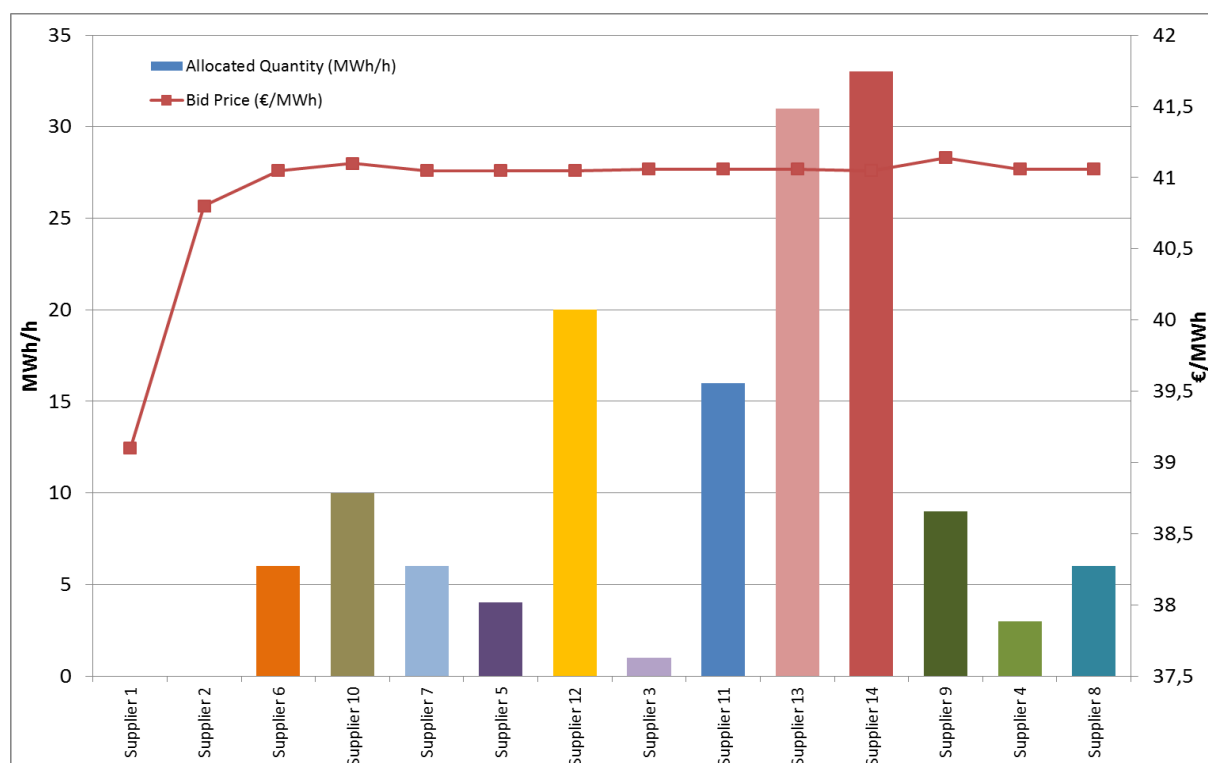
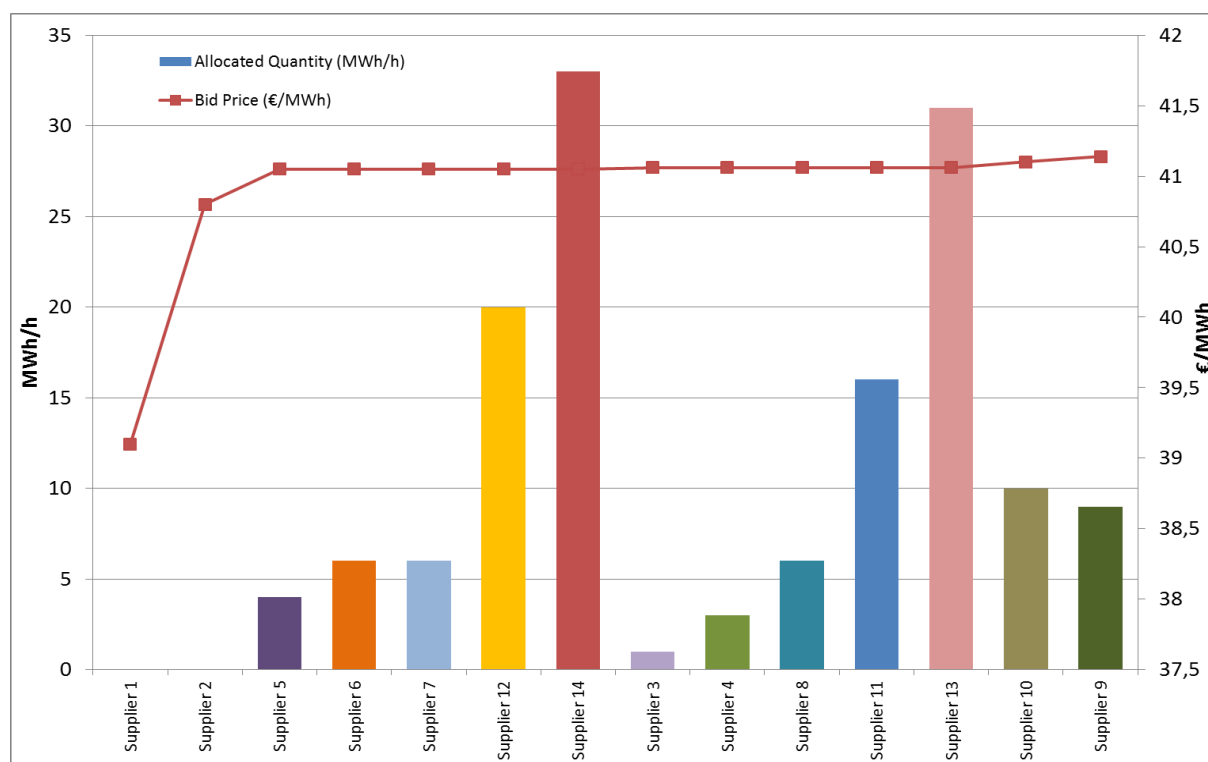
Table.5 Bids Final Classification Table for Auction «2017A01»

Bid ID	Requested Quantity	Allocated Quantity	Bid Price	Date	Time
261542	9	9	41,14	31/1/2017	17:23:50
261509	10	10	41,10	31/1/2017	16:58:24
261540	31	31	41,06	31/1/2017	17:23:16
261539	16	16	41,06	31/1/2017	17:18:27
261544	6	6	41,06	31/1/2017	17:24:04
261543	3	3	41,06	31/1/2017	17:23:53
261536	1	1	41,06	31/1/2017	17:17:43
261541	33	33	41,05	31/1/2017	17:23:43
261533	20	20	41,05	31/1/2017	17:12:35
261507	6	6	41,05	31/1/2017	16:55:19
261527	6	6	41,05	31/1/2017	17:08:16
261532	6	4	41,05	31/1/2017	17:09:04
261375	1	0	40,80	31/1/2017	16:08:59
260508	13	0	39,10	31/1/2017	14:00:03

Figure.5 Valuation of Bids Allocated for Auction «2017A01P01»



(*) Allocated Quantity (MWh/h) and Bid Price (€/MWh)

Figure.6 Final Classification of Bids for Auction «2017A01» (sorted to the submission time)

Figure.7 Final Classification of Bids for Auction «2017A01» (sorted to the Bid Price)


4.3 Auction «2017A02»

The Auction «2017A02» was conducted at April 26th 2017. The product «2017A02P02» was auctioned according to the approved Technical Specifications (RAE Decision 298/2017). The Technical Details of the Auction Specifications, the Auctions Procedure and Results are summarized as follows.

Technical Specifications and procedure for the Auction «2017A02»

Auction	Required Participation Guarantees (€)	Auction Type	Gate Open	Gate Close	Gate Extensions /Duration
2017A02	142.402,13	American / Yankee Auction	26/04/2017 12:00	26/04/2017 12:30	Yes/ 3minutes

Bids Technical Specifications for the Auction «2017A02»

Auction	Minimum Allocation Quantity (MWh/h)	Minimum Bid Quantity (MWh/h)	Minimum Bid Price Tic (€/MWh)
2017A02	1	1	0,05

Specifications of Forward Product «2017A02P02»

Forward Product	Volume (MWh)	Quantity (MWh/h)	Physical Delivery Period	Reserve Price (€/MWh)
2017A02P02	1.270.200	145	01/06/2017-31/05/2018	37,37*

(*) According to the Ministerial Decision, ΑΠΕΗΛ/Γ/Φ1/οικ.182348/24.08.2016 (Government Gazette B' 2848)

Summary of Auction Bids for Auction «2017A02»

Auction	Participants	Valid Bids	Invalid Bids	Total Allocated Quantity
2017A02	11	507	40	145 (100%)
	Best Bid Price	Max Allocated Quantity	Max Requested Quantity	Total Requested Quantity /Total Allocated Quantity
	40,02	30	46	156/145

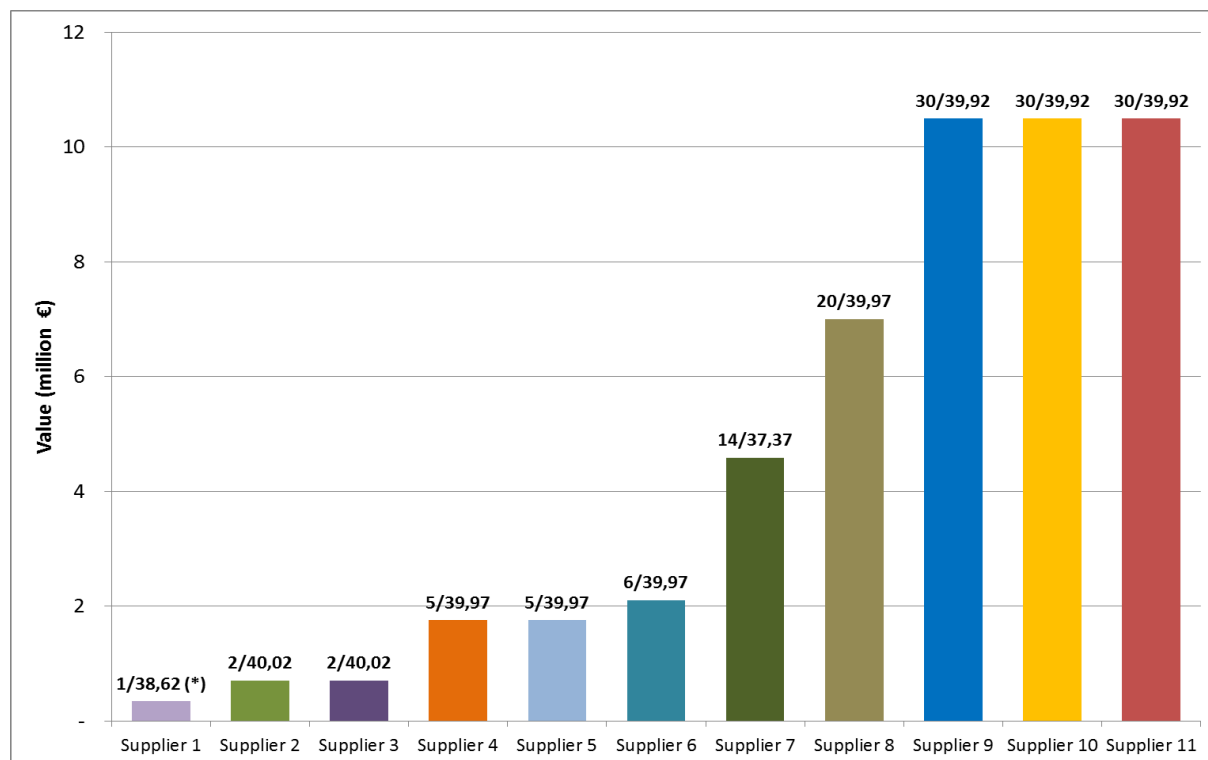
Summary of Auction Process for Auction «2017A02»

Auction	Gate Open	Gate Close	Extensions	Objections
2017A02	26/04/2017 12:00	26/04/2017 14:42	44	0

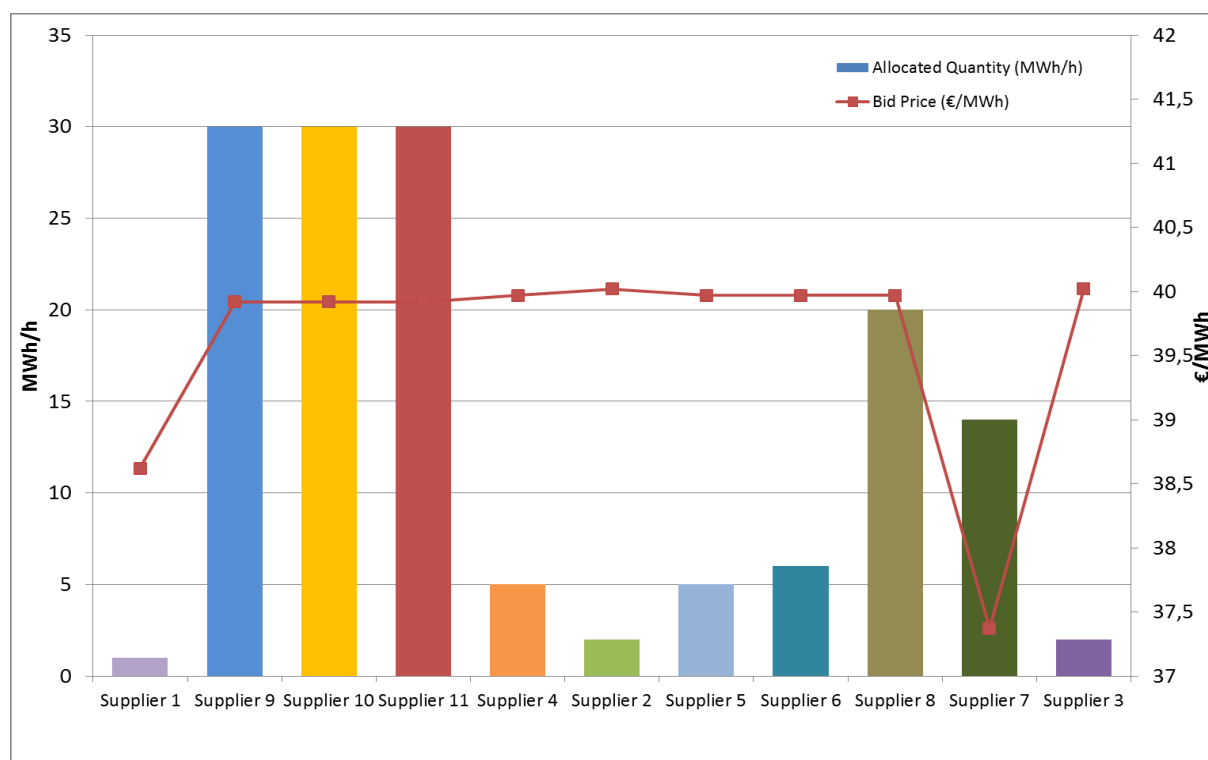
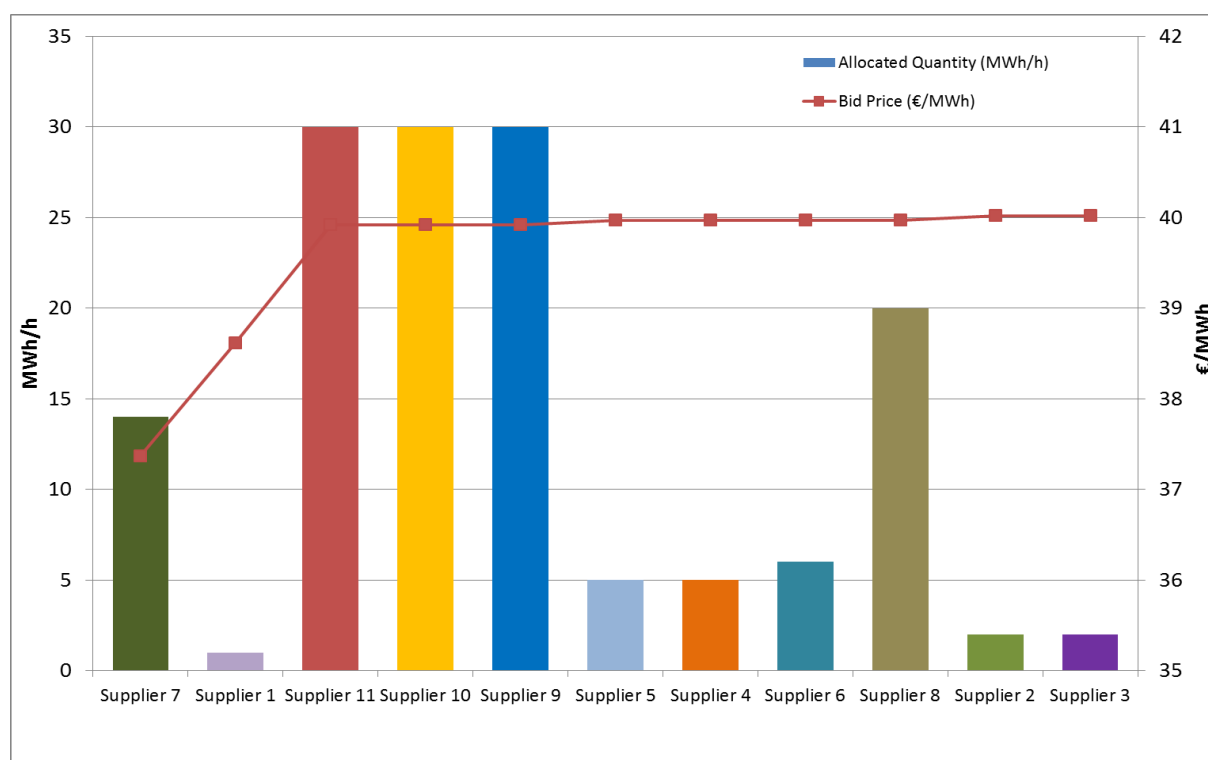
Table.6 Bids Final Classification Table for Auction «2017A02»

Bid ID	Requested Quantity	Allocated Quantity	Bid Price	Date	Time
268564	2	2	40,02	26/4/2017	14:35:52
268569	2	2	40,02	26/4/2017	14:36:58
268567	20	20	39,97	26/4/2017	14:36:15
268566	6	6	39,97	26/4/2017	14:36:02
268563	5	5	39,97	26/4/2017	14:35:40
268565	5	5	39,97	26/4/2017	14:35:56
268554	30	30	39,92	26/4/2017	14:32:59
268561	30	30	39,92	26/4/2017	14:35:21
268562	30	30	39,92	26/4/2017	14:35:33
268316	1	1	38,62	26/4/2017	13:07:13
268568	25	14	37,37	26/4/2017	14:36:41

Figure.8 Valuation of Bids Allocated for Auction «2017A02P02»



(*) Allocated Quantity (MWh/h) and Bid Price (€/MWh)

Figure.9 Final Classification of Bids for Auction «2017A02» (sorted to the submission time)

Figure.10 Final Classification of Bids for Auction «2017A02» (sorted to the Bid Price)


4.4 Auction «2017A03»

The Auction «2017A03» was conducted at July 19th 2017. The product «2017A03P03» was auctioned according to the approved Technical Specifications (RAE Decision **571/2017**). The Technical Details of the Auction Specifications, the Auctions Procedure and Results are summarized as follows.

Technical Specifications and procedure for the Auction «2017A03»

Auction	Required Participation Guarantees (€)	Auction Type	Gate Open	Gate Close	Gate Extensions /Duration
2017A03	122.129,73	American / Yankee Auction	19/07/2017 12:00	19/07/2017 12:30	Yes/ 3minutes

Bids Technical Specifications for the Auction «2017A03»

Auction	Minimum Allocation Quantity (MWh/h)	Minimum Bid Quantity (MWh/h)	Minimum Bid Price Tic (€/MWh)
2017A03	1	1	0,05

Specifications of Forward Product «2017A03P03»

Forward Product	Volume (MWh)	Quantity (MWh/h)	Physical Delivery Period	Reserve Price (€/MWh)
2017A03P03	1.270.200	145	01/09/2017-31/08/2018	32,05*

(*) According to the Ministerial Decision, ΑΠΕΗΛ/Γ/Φ1/οικ.178634/04.07.2017 (Government Gazette B' 2278/04.07.2017)

Summary of Auction Bids for Auction «2017A03»

Auction	Participants	Valid Bids	Invalid Bids	Total Allocated Quantity
2017A03	18	1615	1181	145 (100%)
	Best Bid Price	Max Allocated Quantity	Max Requested Quantity	Total Requested Quantity /Total Allocated Quantity
	43,05	25	145	164/145

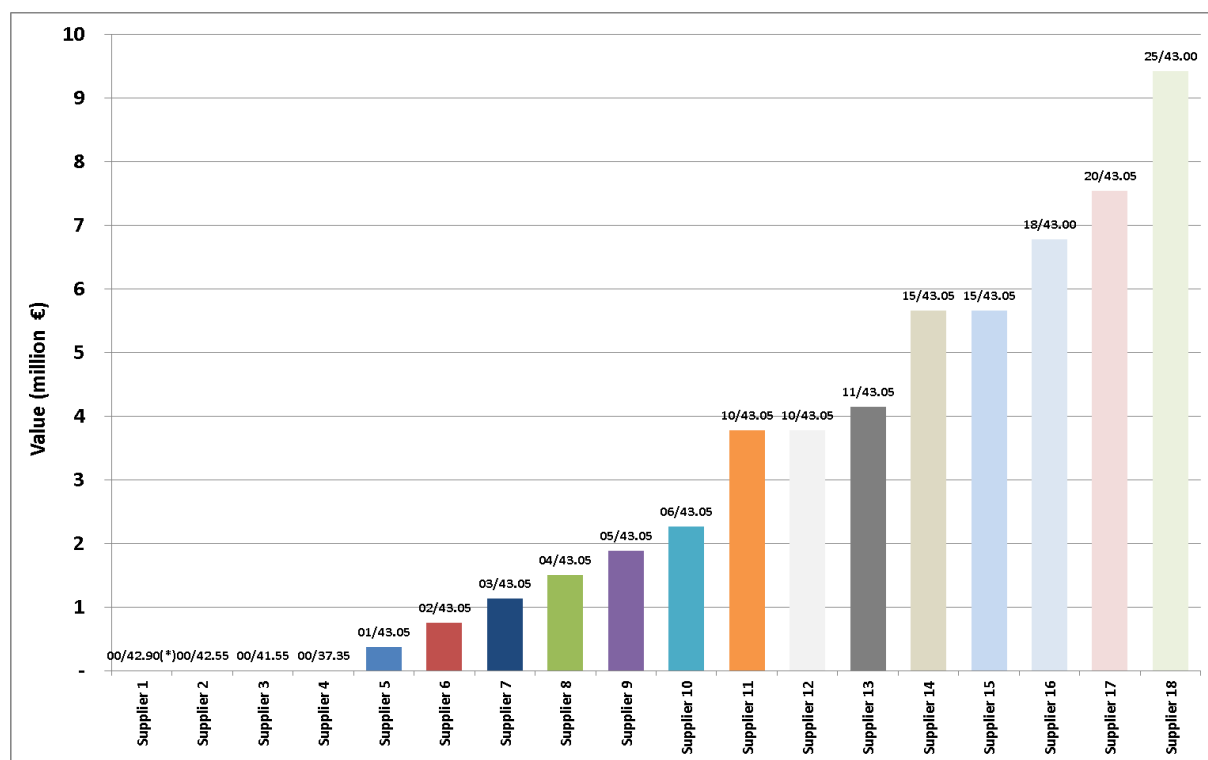
Summary of Auction Process for Auction «2017A03»

Auction	Gate Open	Gate Close	Extensions	Objections
2017A03	19/07/2017 12:00	19/07/2017 15:15	55	0

Table.7 Bids Final Classification Table for Auction «2017A03»

Bid ID	Requested Quantity	Allocated Quantity	Bid Price	Date	Time
274260	1	1	43,05	19/7/2017	14:57:30
274261	2	2	43,05	19/7/2017	14:57:46
274263	3	3	43,05	19/7/2017	15:00:22
274264	4	4	43,05	19/7/2017	15:00:50
274265	5	5	43,05	19/7/2017	15:01:12
274266	6	6	43,05	19/7/2017	15:01:21
274267	10	10	43,05	19/7/2017	15:01:31
274270	10	10	43,05	19/7/2017	15:03:32
274269	11	11	43,05	19/7/2017	15:03:07
274271	15	15	43,05	19/7/2017	15:06:56
274272	15	15	43,05	19/7/2017	15:08:37
274273	20	20	43,05	19/7/2017	15:09:04
274241	20	18	43,00	19/7/2017	14:50:32
274268	25	25	43,00	19/7/2017	15:02:27
274224	4	0	42,90	19/7/2017	14:32:45
274103	10	0	42,55	19/7/2017	13:50:51
273876	1	0	41,55	19/7/2017	13:06:07
273039	2	0	37,35	19/7/2017	12:18:40

Figure.11 Valuation of Bids Allocated for Auction «2017A03P03»



(*) Allocated Quantity (MWh/h) and Bid Price (€/MWh)

Figure.12 Final Classification of Bids for Auction «2017A03» (sorted to the submission time)

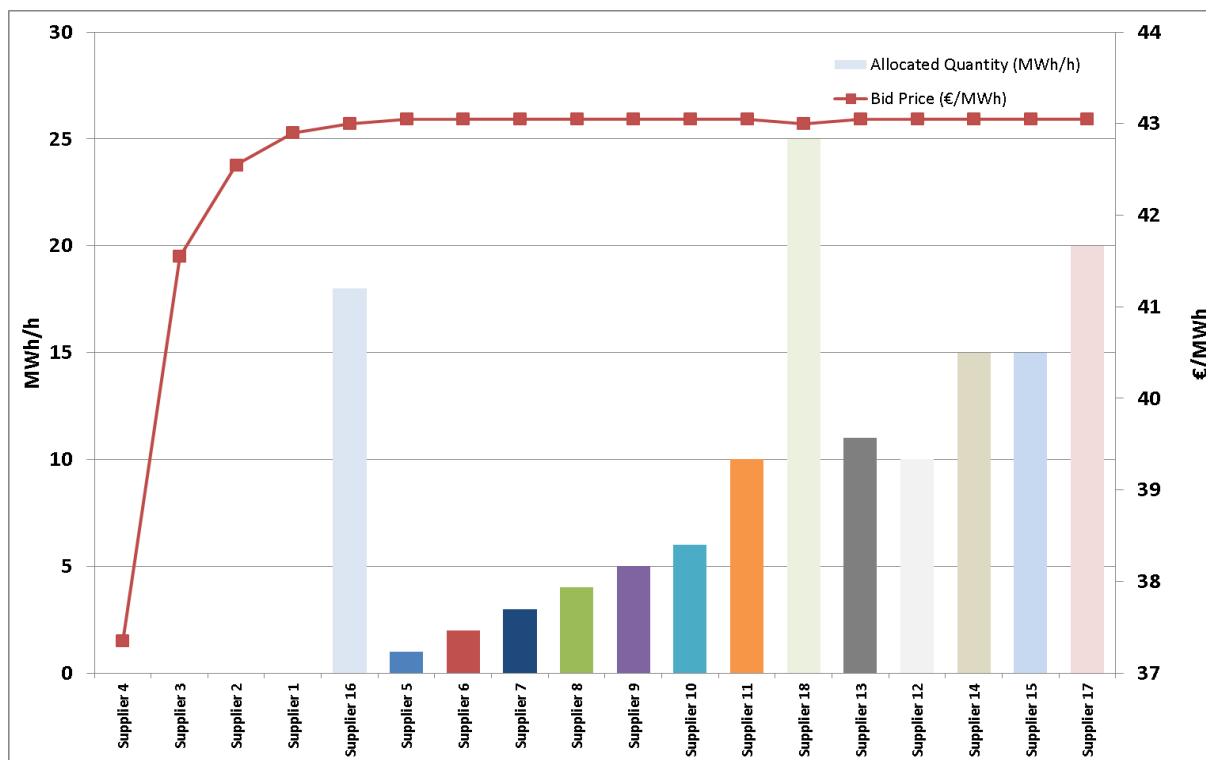
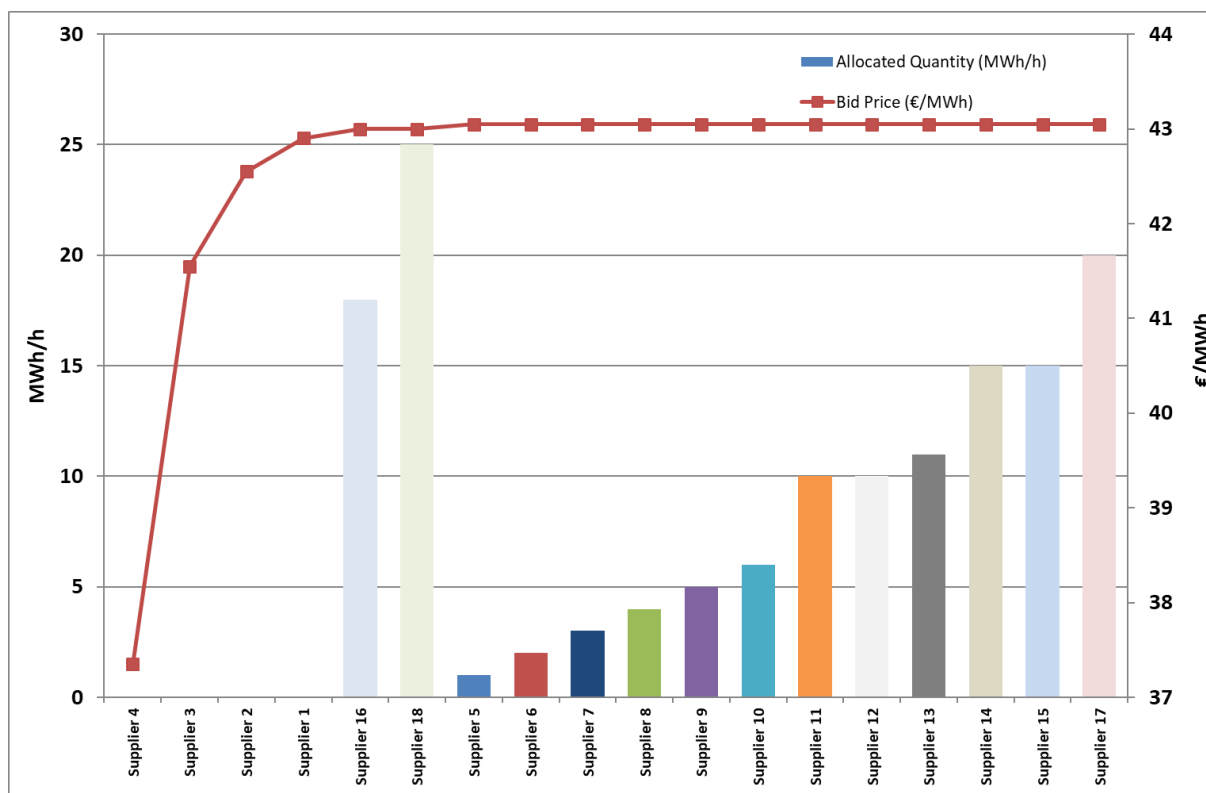


Figure.13 Final Classification of Bids for Auction «2017A03» (sorted to the Bid Price)



4.5 Auction «2017A04»

The Auction «2017A04» was conducted at October 25th 2017. The product «2017A04P04» was auctioned according to the approved Technical Specifications (RAE Decision **870/2017**). The Technical Details of the Auction Specifications, the Auctions Procedure and Results are summarized as follows.

Technical Specifications and procedure for the Auction «2017A04»

Auction	Required Participation Guarantees (€)	Auction Type	Gate Open	Gate Close	Gate Extensions /Duration
2017A04	604.752,73	American / Yankee Auction	25/10/2017 12:00	25/10/2017 12:30	Yes/ 3minutes

Bids Technical Specifications for the Auction «2017A04»

Auction	Minimum Allocation Quantity (MWh/h)	Minimum Bid Quantity (MWh/h)	Minimum Bid Price Tic (€/MWh)
2017A04	1	1	0,05

Specifications of Forward Product «2017A04P04»

Forward Product	Volume (MWh)	Quantity (MWh/h)	Physical Delivery Period	Reserve Price (€/MWh)
2017A04P04	6.289.680	718	01/12/2017 – 30/11/2018	32,05*

(*) According to the Ministerial Decision, ΑΠΕΗΛ/Γ/Φ1/οικ.178634/04.07.2017 (Government Gazette Β' 2278/04.07.2017)

Summary of Auction Bids for Auction «2017A04»

Auction	Participants	Valid Bids	Invalid Bids	Total Allocated Quantity
2017A04	19	5097	92	718 (100%)
	Best Bid Price	Max Allocated Quantity	Max Requested Quantity	Total Requested Quantity /Total Allocated Quantity
	45,25	160	311	739/718

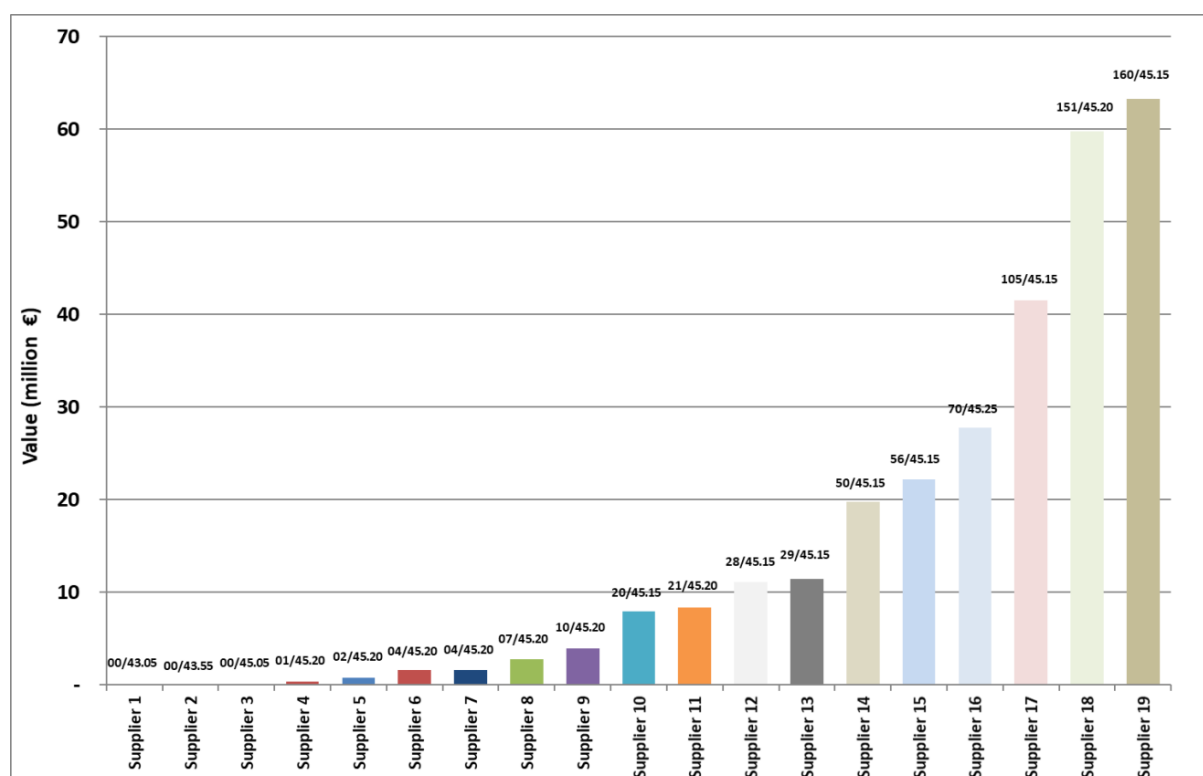
Summary of Auction Process for Auction «2017A04»

Auction	Gate Open	Gate Close	Extensions	Objections
2017A04	25/10/2017 12:00	26/10/2017 01:03	251	0

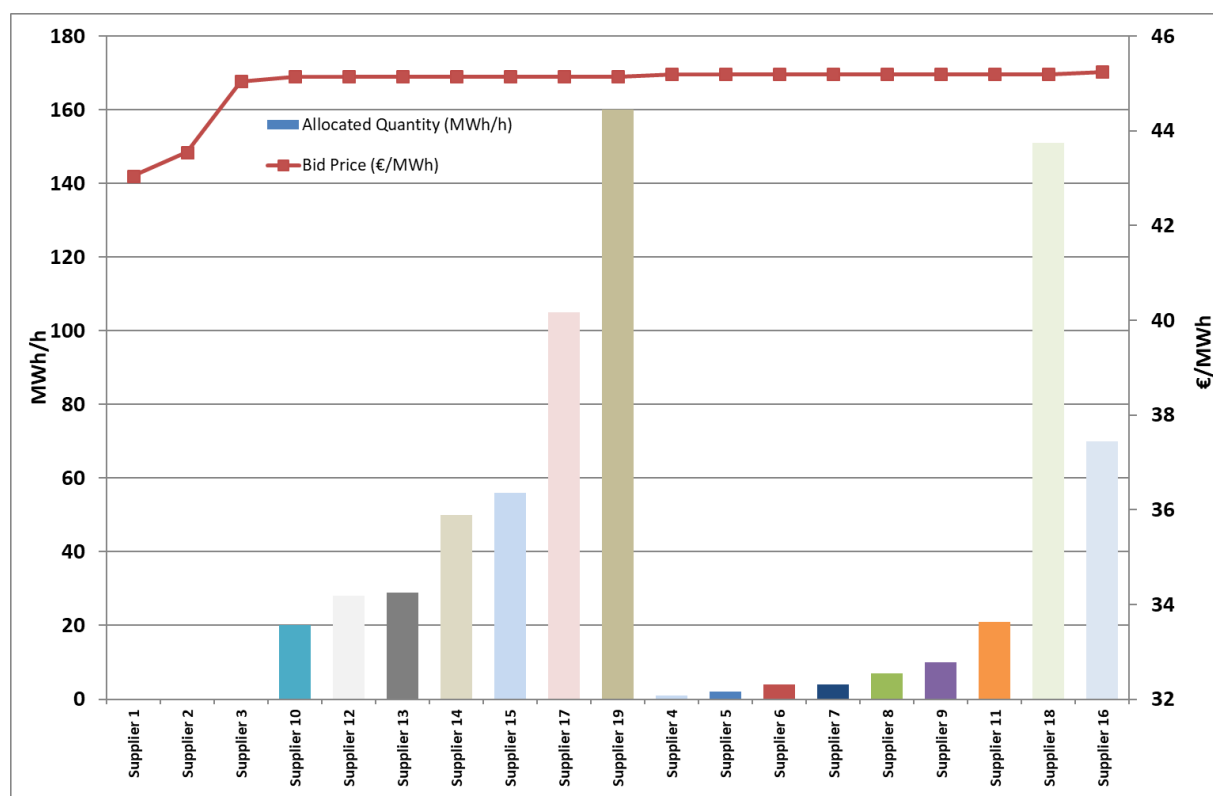
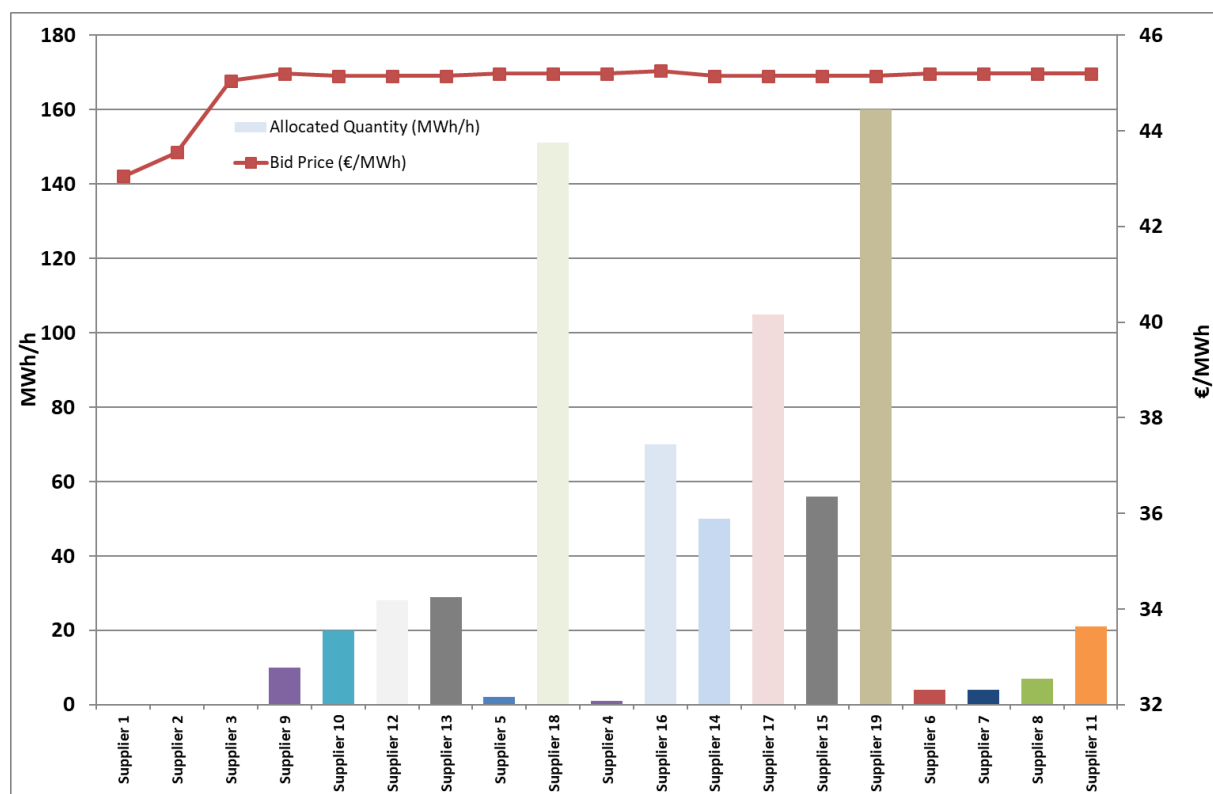
Table.8 Bids Final Classification Table for Auction «2017A04»

Bid ID	Requested Quantity	Allocated Quantity	Bid Price	Date	Time
286616	70	70	45,25	26/10/2017	0:39:53
286604	151	151	45,2	26/10/2017	0:26:05
286629	21	21	45,2	26/10/2017	0:57:09
286587	10	10	45,2	26/10/2017	0:12:07
286628	7	7	45,2	26/10/2017	0:56:57
286626	4	4	45,2	26/10/2017	0:55:34
286627	4	4	45,2	26/10/2017	0:55:48
286602	2	2	45,2	26/10/2017	0:23:29
286610	1	1	45,2	26/10/2017	0:32:41
286625	160	160	45,15	26/10/2017	0:54:13
286623	105	105	45,15	26/10/2017	0:51:15
286624	56	56	45,15	26/10/2017	0:53:31
286619	50	50	45,15	26/10/2017	0:46:56
286599	29	29	45,15	26/10/2017	0:22:36
286594	28	28	45,15	26/10/2017	0:19:54
286591	25	20	45,15	26/10/2017	0:16:32
286555	5	0	45,05	25/10/2017	23:44:05
285821	8	0	43,55	25/10/2017	19:46:42
285521	3	0	43,05	25/10/2017	18:47:35

Figure.14 Valuation of Bids Allocated for Auction «2017A04P04»



(*) Allocated Quantity (MWh/h) and Bid Price (€/MWh)

Figure.15 Final Classification of Bids for Auction «2017A04» (sorted to the submission time)

Figure.16 Final Classification of Bids for Auction «2017A04» (sorted to the Bid Price)


4.6 Auction «2018A01»

The Auction «2018A01» was conducted at February 7th 2018. The product «2018A01P01» was auctioned according to the approved Technical Specifications (RAE Decision 83/2018). The Technical Details of the Auction Specifications, the Auctions Procedure and Results are summarized as follows.

Technical Specifications and procedure for the Auction «2018A01»

Auction	Required Participation Guarantees (€)	Auction Type	Gate Open	Gate Close	Gate Extensions /Duration
2018A01	336.910	American / Yankee Auction	07/02/2018 12:00	07/02/2018 12:30	Yes/ 3minutes

Bids Technical Specifications for the Auction «2018A01»

Auction	Minimum Allocation Quantity (MWh/h)	Minimum Bid Quantity (MWh/h)	Minimum Bid Price Tic (€/MWh)
2018A01	1	1	0,1

Specifications of Forward Product «2018A01P01»

Forward Product	Volume (MWh)	Quantity (MWh/h)	Physical Delivery Period	Reserve Price (€/MWh)
2018A01P01	3.504.000	400	01/03/2018 – 28/02/2019	32,05*

(*) According to the Ministerial Decision, ΑΠΕΗΛ/Γ/Φ1/οικ.178634/04.07.2017 (Government Gazette B' 2278/04.07.2017)

Summary of Auction Bids for Auction «2018A01»

Auction	Participants	Valid Bids	Invalid Bids	Total Allocated Quantity
2018A01	17	1879	33	400 (100%)
	Best Bid Price	Max Allocated Quantity	Max Requested Quantity	Total Requested Quantity /Total Allocated Quantity
	41.45	131	200	412/400

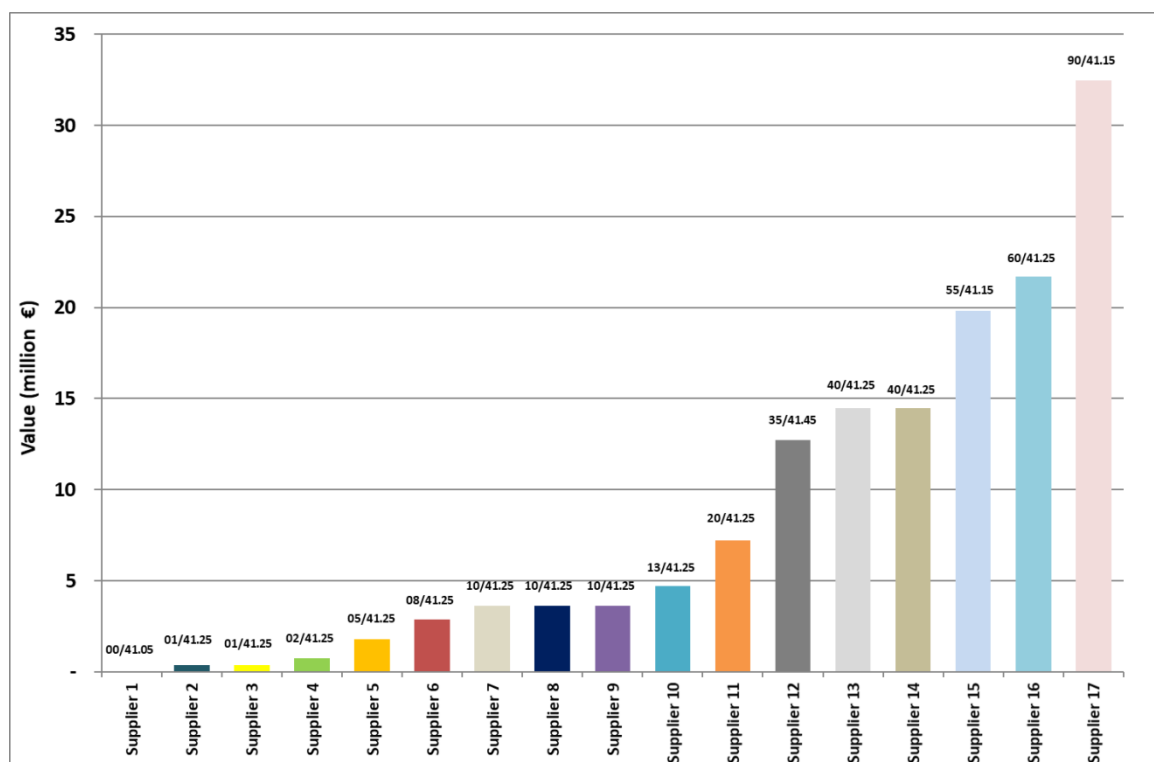
Summary of Auction Process for Auction «2018A01»

Auction	Gate Open	Gate Close	Extensions	Objections
2018A01	07/02/2018 12:00	07/02/2018 14:27	39	0

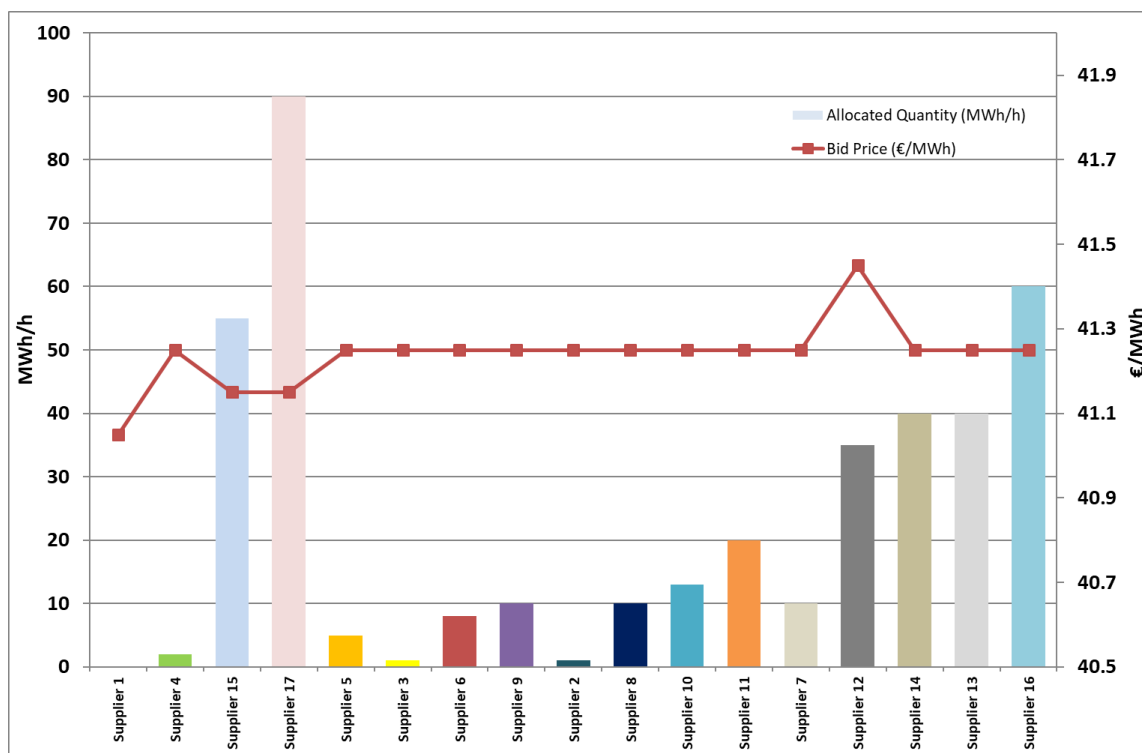
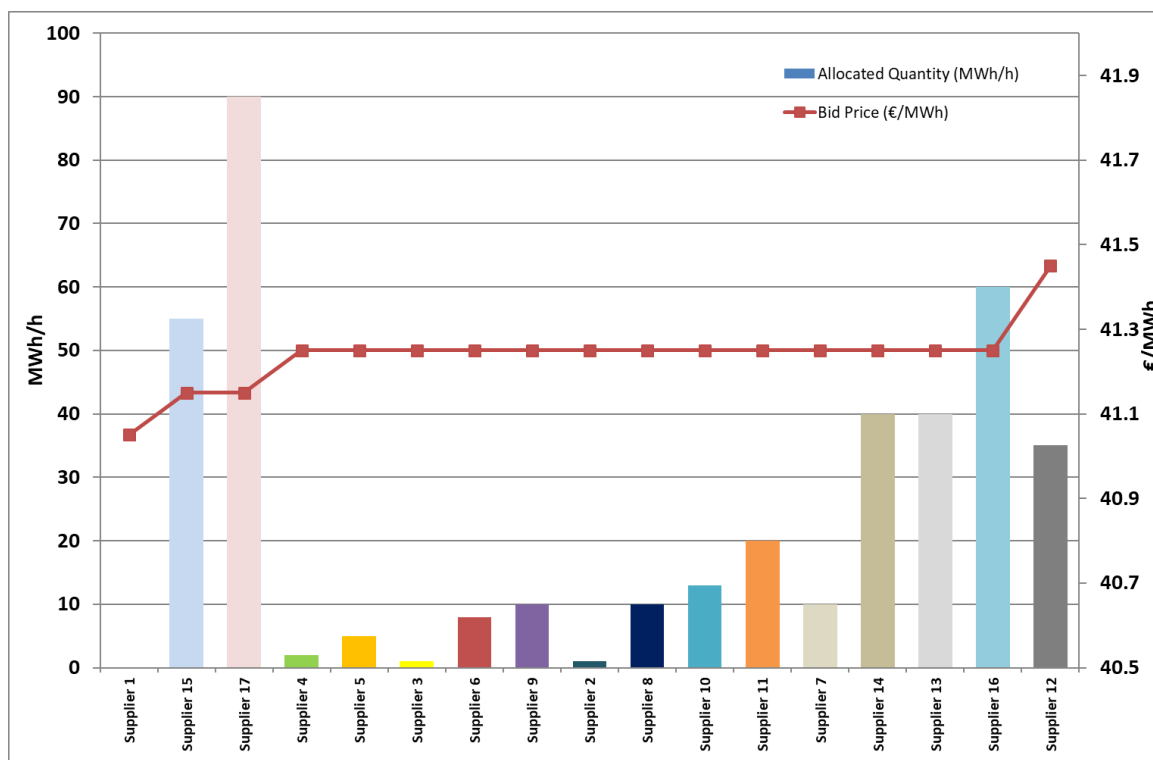
Table.9 Bids Final Classification Table for Auction «2018A01»

Bid ID	Requested Quantity	Allocated Quantity	Bid Price	Date	Time
297659	60	60	41,25	07/02/2018	14:22:18
297657	40	40	41,25	07/02/2018	14:21:17
297656	40	40	41,25	07/02/2018	14:20:55
297655	35	35	41,45	07/02/2018	14:20:23
297654	10	10	41,25	07/02/2018	14:20:13
297653	20	20	41,25	07/02/2018	14:19:47
297651	13	13	41,25	07/02/2018	14:19:39
297650	10	10	41,25	07/02/2018	14:18:58
297649	1	1	41,25	07/02/2018	14:18:04
297648	10	10	41,25	07/02/2018	14:17:47
297645	8	8	41,25	07/02/2018	14:15:26
297643	1	1	41,25	07/02/2018	14:15:04
297642	5	5	41,25	07/02/2018	14:15:02
297641	90	90	41,15	07/02/2018	14:14:53
297640	61	55	41,15	07/02/2018	14:14:27
297620	2	2	41,25	07/02/2018	14:01:10
297594	6	0	41,05	07/02/2018	13:46:52

Figure.17 Valuation of Bids Allocated for Auction «2018A01P01»



(*) Allocated Quantity (MWh/h) and Bid Price (€/MWh)

Figure.18 Final Classification of Bids for Auction «2018A01» (sorted to the submission time)

Figure.19 Final Classification of Bids for Auction «2018A01» (sorted to the Bid Price)




5. Secondary Market

A Secondary Market where both Eligible Suppliers and Eligible Traders can transparently exchange quantities of Monthly Forward Sub-Products has been established and operates continuously. The following Table.10 summarizes the Secondary Market operation for each Delivery Month for each Forward Product.

Table.10 FEPAS Secondary Market Summary for Monthly Forward Sub-products up to 03/2018

Delivery Month	Forward Product	No. of Transfers	Transferred Quantities (MWh/h)	Quantity (MWh/h)	WAvg Transfer Price (€/MWh)	Wavg Bid Price (€/MWh)
2016 12 Gate Closure: 16/11/16 15:00	2016A01P01	2	17	460	38.059	37.5
2017 01 Gate Closure: 15/12/16 15:00	2016A01P01	2	12	460	39	37.5
2017 02 Gate Closure: 17/01/17 15:00	2016A01P01	2	11	460	42	37.5
2017 03 Gate Closure: 15/02/17 15:00	2016A01P01	2	9	460	41.111	37.5
	2017A01P01	4	19	145	41.612	41.056
2017 04 Gate Closure: 17/03/17 15:00	2016A01P01	2	9	460	40.222	37.5
	2017A01P01	4	19	145	41.122	41.056
2017 05 Gate Closure: 18/04/17 15:00	2016A01P01	3	8	460	41.5	37.5
	2017A01P01	5	24	145	41.655	41.055
2017 06 Gate Closure: 17/05/17 15:00	2016A01P01	1	6	460	39.5	37.5
	2017A01P01	4	12	145	41.323	41.056
	2017A02P02	1	3	145	39.97	39.97
2017 07 Gate Closure: 18/06/17 15:00	2016A01P01	2	9	460	46.733	37.442
	2017A01P01	5	22	145	44.677	41.055
2017 08 Gate Closure: 18/07/17 15:00	2016A01P01	1	6	460	42.5	37.5
	2017A01P01	3	14	145	42.5	41.057
2017 09 Gate Closure: 16/08/17 15:00	2016A01P01	1	9	460	39	37.5
	2017A01P01	3	15	145	42.48	41.057
	2017A03P03	5	39	145	44.013	43.05
2017 10 Gate Closure: 18/09/17 15:00	2016A01P01	2	9	460	41.333	37.5
	2017A01P01	3	13	145	42.346	41.058
	2017A03P03	8	38	145	43.766	43.05
2017 11 Gate Closure: 18/10/17 15:00	2016A01P01	1	7	460	44.55	37.5
	2017A01P01	3	14	145	42.929	41.059
	2017A03P03	5	39	145	44.633	43.05
2017 12 Gate Closure: 15/11/17 15:00	2017A01P01	4	20	145	46.64	41.056
	2017A03P03	4	27	145	44.333	43.05
	2017A04P04	13	140	718	50.14	45.166
2018 01 Gate Closure: 15/12/17 15:00	2017A01P01	4	18	145	46.739	41.057
	2017A03P03	4	27	145	46.074	43.05
	2017A04P04	14	135	718	50.039	45.159
2018 02 Gate Closure: 17/01/18 15:00	2017A01P01	3	15	145	43.52	41.058
	2017A03P03	2	25	145	45.34	43.05
	2017A04P04	13	87	718	48.571	45.167
2018 03 Gate Closure: 17/02/18 15:00	2017A03P03	2	25	145	45.34	43.05
	2017A04P04	6	42	718	48.411	45.164
	2018A01P01	8	44	400	41.932	41.295

Where:

Transfers: Number of Transfers effectuated.

Transferred Quantities (MWh/h): Total Quantity of the Monthly Forward Sub-products transferred in the Secondary Market.



WAvg Transfer Price (€/MWh):	Weighted Average Price of the Transfers effectuated.
WAvg Bid Price (€/MWh):	Weighted Average Price of the Auction Bids (related to the Primary Market).
Gate Opening/Closure:	Date and Time of Gate Open/Close for the Secondary Market operation and Transfers relevant to the Delivery Month.

6. Nominations of Forward Monthly Sub-products

The Nominations of Monthly Sub-products are effectuated after the Secondary Market Gate Closure of the relevant Delivery Month. The holders of Monthly Forward Sub-products are nominating the usage of quantities of the Monthly Sub-products for physical delivery on a monthly basis (for each Dispatch Day and Dispatch Period of the delivery month). The following Table.11 summarizes the Usage Declarations provided by the Eligible Suppliers and Traders under the Nomination process for each Delivery Month and for each Forward Product.

Table.11a FEPAS Nominations Usage Declarations Summary for Monthly Forward Sub-products -12/2016

ELIGIBLE SUPPLIER	PRODUCT CODE	TOTAL NOM USG MW	PRODUCT USG_DCL_SHARE
Elig.Supplier_01	2016A01P01	110	23.91%
Elig.Supplier_02	2016A01P01	108	23.48%
Elig.Supplier_03	2016A01P01	97	21.09%
Elig.Supplier_04	2016A01P01	49	10.65%
Elig.Supplier_05	2016A01P01	53	11.52%
Elig.Supplier_06	2016A01P01	20	4.35%
Elig.Supplier_07	2016A01P01	15	3.26%
Elig.Supplier_11	2016A01P01	3	0.65%
Elig.Supplier_12	2016A01P01	2	0.44%
Elig.Supplier_15	2016A01P01	1	0.22%
Elig.Supplier_17	2016A01P01	2	0.44%

* Eligible suppliers and traders ranking is updated every month according to Table 12.of this report.

Table.11b FEPAS Nominations Usage Declarations Summary for Monthly Forward Sub-products -01/2017

ELIGIBLE SUPPLIER	PRODUCT CODE	TOTAL NOM USG MW	PRODUCT USG_DCL_SHARE
Elig.Supplier_01	2016A01P01	105	22.83%
Elig.Supplier_02	2016A01P01	108	23.48%
Elig.Supplier_03	2016A01P01	97	21.09%
Elig.Supplier_04	2016A01P01	49	10.65%
Elig.Supplier_05	2016A01P01	53	11.52%
Elig.Supplier_06	2016A01P01	20	4.35%
Elig.Supplier_07	2016A01P01	20	4.35%
Elig.Supplier_11	2016A01P01	3	0.65%
Elig.Supplier_12	2016A01P01	2	0.44%
Elig.Supplier_15	2016A01P01	1	0.22%
Elig.Supplier_17	2016A01P01	2	0.44%

* Eligible suppliers and traders ranking is updated every month according to Table 12.of this report.

Table.11c FEPAS Nominations Usage Declarations Summary for Monthly Forward Sub-products - 02/2017

ELIGIBLE SUPPLIER	PRODUCT CODE	TOTAL NOM USG MW	PRODUCT USG_DCL_SHARE
Elig.Supplier_01	2016A01P01	111	24.13%
Elig.Supplier_02	2016A01P01	108	23.48%
Elig.Supplier_03	2016A01P01	97	21.09%
Elig.Supplier_04	2016A01P01	47	10.22%
Elig.Supplier_05	2016A01P01	53	11.52%



Elig.Supplier_06	2016A01P01	20	4.35%
Elig.Supplier_07	2016A01P01	15	3.26%
Elig.Supplier_11	2016A01P01	4	0.87%
Elig.Supplier_12	2016A01P01	2	0.44%
Elig.Supplier_15	2016A01P01	1	0.22%
Elig.Supplier_17	2016A01P01	2	0.44%

* Eligible suppliers and traders ranking is updated every month according to Table 12.of this report.

Table.11d FEPAS Nominations Usage Declarations Summary for Monthly Forward Sub-products - 03/2017

ELIGIBLE SUPPLIER	PRODUCT CODE	TOTAL NOM USG MW	PRODUCT USG_DCL_SHARE
Elig.Supplier_01	2016A01P01	113	24.57%
Elig.Supplier_01	2017A01P01	24	16.55%
Elig.Supplier_02	2016A01P01	108	23.48%
Elig.Supplier_02	2017A01P01	33	22.76%
Elig.Supplier_03	2016A01P01	97	21.09%
Elig.Supplier_03	2017A01P01	31	21.38%
Elig.Supplier_04	2016A01P01	42	9.13%
Elig.Supplier_04	2017A01P01	15	10.35%
Elig.Supplier_05	2016A01P01	53	11.52%
Elig.Supplier_05	2017A01P01	6	4.14%
Elig.Supplier_06	2016A01P01	20	4.35%
Elig.Supplier_06	2017A01P01	6	4.14%
Elig.Supplier_07	2016A01P01	15	3.26%
Elig.Supplier_07	2017A01P01	6	4.14%
Elig.Supplier_08	2017A01P01	10	6.90%
Elig.Supplier_09	2017A01P01	2	1.38%
Elig.Supplier_10	2017A01P01	9	6.21%
Elig.Supplier_11	2016A01P01	6	1.30%
Elig.Supplier_12	2016A01P01	3	0.65%
Elig.Supplier_14	2017A01P01	1	0.69%
Elig.Supplier_15	2016A01P01	1	0.22%
Elig.Supplier_16	2017A01P01	1	0.69%
Elig.Supplier_17	2016A01P01	2	0.44%
Elig.Supplier_17	2017A01P01	1	0.69%

* Eligible suppliers and traders ranking is updated every month according to Table 12.of this report.

Table.11e FEPAS Nominations Usage Declarations Summary for Monthly Forward Sub-products - 04/2017

ELIGIBLE SUPPLIER	PRODUCT CODE	TOTAL NOM USG MW	PRODUCT USG_DCL_SHARE
Elig.Supplier_01	2016A01P01	113	24.57%
Elig.Supplier_01	2017A01P01	27	18.62%
Elig.Supplier_02	2016A01P01	108	23.48%
Elig.Supplier_02	2017A01P01	33	22.76%
Elig.Supplier_03	2016A01P01	97	21.09%
Elig.Supplier_03	2017A01P01	31	21.38%
Elig.Supplier_04	2016A01P01	42	9.13%
Elig.Supplier_04	2017A01P01	12	8.28%
Elig.Supplier_05	2016A01P01	53	11.52%
Elig.Supplier_05	2017A01P01	6	4.14%
Elig.Supplier_06	2016A01P01	20	4.35%
Elig.Supplier_06	2017A01P01	6	4.14%

Elig.Supplier_07	2016A01P01	15	3.26%
Elig.Supplier_07	2017A01P01	6	4.14%
Elig.Supplier_08	2017A01P01	10	6.90%
Elig.Supplier_09	2017A01P01	2	1.38%
Elig.Supplier_10	2017A01P01	9	6.21%
Elig.Supplier_11	2016A01P01	6	1.30%
Elig.Supplier_12	2016A01P01	3	0.65%
Elig.Supplier_14	2017A01P01	1	0.69%
Elig.Supplier_15	2016A01P01	1	0.22%
Elig.Supplier_16	2017A01P01	1	0.69%
Elig.Supplier_17	2016A01P01	2	0.44%
Elig.Supplier_17	2017A01P01	1	0.69%

* Eligible suppliers and traders ranking is updated every month according to Table 12.of this report.

Table.11f FEPAS Nominations Usage Declarations Summary for Monthly Forward Sub-products - 05/2017

ELIGIBLE SUPPLIER	PRODUCT CODE	TOTAL NOM USG MW	PRODUCT USG_DCL_SHARE
Elig.Supplier_01	2016A01P01	109	23.70%
Elig.Supplier_01	2017A01P01	29	20.00%
Elig.Supplier_02	2016A01P01	108	23.48%
Elig.Supplier_02	2017A01P01	33	22.76%
Elig.Supplier_03	2016A01P01	97	21.09%
Elig.Supplier_03	2017A01P01	31	21.38%
Elig.Supplier_04	2016A01P01	45	9.78%
Elig.Supplier_04	2017A01P01	15	10.35%
Elig.Supplier_05	2016A01P01	53	11.52%
Elig.Supplier_05	2017A01P01	1	0.69%
Elig.Supplier_06	2016A01P01	20	4.35%
Elig.Supplier_06	2017A01P01	6	4.14%
Elig.Supplier_07	2016A01P01	15	3.26%
Elig.Supplier_07	2017A01P01	6	4.14%
Elig.Supplier_08	2017A01P01	10	6.90%
Elig.Supplier_09	2017A01P01	2	1.38%
Elig.Supplier_10	2017A01P01	9	6.21%
Elig.Supplier_11	2016A01P01	7	1.52%
Elig.Supplier_12	2016A01P01	3	0.65%
Elig.Supplier_14	2017A01P01	1	0.69%
Elig.Supplier_15	2016A01P01	1	0.22%
Elig.Supplier_16	2017A01P01	1	0.69%
Elig.Supplier_17	2016A01P01	2	0.44%
Elig.Supplier_17	2017A01P01	1	0.69%

* Eligible suppliers and traders ranking is updated every month according to Table 12.of this report.

Table.11g FEPAS Nominations Usage Declarations Summary for Monthly Forward Sub-products - 06/2017

ELIGIBLE SUPPLIER	PRODUCT CODE	TOTAL NOM USG MW	PRODUCT USG_DCL_SHARE
Elig.Supplier_01	2016A01P01	111	24.13%
Elig.Supplier_01	2017A01P01	25	17.24%
Elig.Supplier_01	2017A02P02	33	22.76%
Elig.Supplier_02	2016A01P01	108	23.48%
Elig.Supplier_02	2017A01P01	33	22.76%
Elig.Supplier_02	2017A02P02	30	20.69%

Elig.Supplier_03	2016A01P01	97	21.09%
Elig.Supplier_03	2017A01P01	31	21.38%
Elig.Supplier_03	2017A02P02	30	20.69%
Elig.Supplier_04	2016A01P01	42	9.13%
Elig.Supplier_04	2017A01P01	12	8.28%
Elig.Supplier_04	2017A02P02	20	13.79%
Elig.Supplier_05	2016A01P01	53	11.52%
Elig.Supplier_05	2017A01P01	6	4.14%
Elig.Supplier_05	2017A02P02	14	9.66%
Elig.Supplier_06	2016A01P01	20	4.35%
Elig.Supplier_06	2017A01P01	6	4.14%
Elig.Supplier_06	2017A02P02	6	4.14%
Elig.Supplier_07	2016A01P01	15	3.26%
Elig.Supplier_07	2017A01P01	11	7.59%
Elig.Supplier_07	2017A02P02	5	3.45%
Elig.Supplier_08	2017A01P01	5	3.45%
Elig.Supplier_09	2017A01P01	3	2.07%
Elig.Supplier_09	2017A02P02	2	1.38%
Elig.Supplier_10	2017A01P01	9	6.21%
Elig.Supplier_10	2017A02P02	2	1.38%
Elig.Supplier_11	2016A01P01	9	1.96%
Elig.Supplier_12	2016A01P01	2	0.44%
Elig.Supplier_12	2017A02P02	2	1.38%
Elig.Supplier_14	2017A01P01	2	1.38%
Elig.Supplier_15	2016A01P01	1	0.22%
Elig.Supplier_16	2017A01P01	1	0.69%
Elig.Supplier_16	2017A02P02	1	0.69%
Elig.Supplier_17	2016A01P01	2	0.44%
Elig.Supplier_17	2017A01P01	1	0.69%

* Eligible suppliers and traders ranking is updated every month according to Table 12.of this report.

Table.11h FEPAS Nominations Usage Declarations Summary for Monthly Forward Sub-products - 07/2017

ELIGIBLE SUPPLIER	PRODUCT CODE	TOTAL NOM USG MW	PRODUCT USG_DCL_SHARE
Elig.Supplier_01	2016A01P01	114	24.78%
Elig.Supplier_01	2017A01P01	28	19.31%
Elig.Supplier_01	2017A02P02	30	20.69%
Elig.Supplier_02	2016A01P01	108	23.48%
Elig.Supplier_02	2017A01P01	33	22.76%
Elig.Supplier_02	2017A02P02	30	20.69%
Elig.Supplier_03	2016A01P01	97	21.09%
Elig.Supplier_03	2017A01P01	31	21.38%
Elig.Supplier_03	2017A02P02	30	20.69%
Elig.Supplier_04	2016A01P01	42	9.13%
Elig.Supplier_04	2017A01P01	10	6.90%
Elig.Supplier_04	2017A02P02	20	13.79%
Elig.Supplier_05	2016A01P01	49	10.65%
Elig.Supplier_05	2017A02P02	14	9.66%
Elig.Supplier_06	2016A01P01	20	4.35%
Elig.Supplier_06	2017A01P01	6	4.14%
Elig.Supplier_06	2017A02P02	6	4.14%
Elig.Supplier_07	2016A01P01	15	3.26%
Elig.Supplier_07	2017A01P01	8	5.52%

Elig.Supplier_07	2017A02P02	5	3.45%
Elig.Supplier_08	2017A01P01	10	6.90%
Elig.Supplier_09	2017A01P01	2	1.38%
Elig.Supplier_09	2017A02P02	5	3.45%
Elig.Supplier_10	2017A01P01	9	6.21%
Elig.Supplier_10	2017A02P02	2	1.38%
Elig.Supplier_11	2016A01P01	10	2.17%
Elig.Supplier_12	2016A01P01	2	0.44%
Elig.Supplier_12	2017A02P02	2	1.38%
Elig.Supplier_14	2017A01P01	2	1.38%
Elig.Supplier_15	2016A01P01	1	0.22%
Elig.Supplier_16	2017A01P01	3	2.07%
Elig.Supplier_16	2017A02P02	1	0.69%
Elig.Supplier_17	2016A01P01	2	0.44%
Elig.Supplier_17	2017A01P01	1	0.69%
Elig.Trader_04	2017A01P01	2	1.38%

* Eligible suppliers and traders ranking is updated every month according to Table 12.of this report.

Table.11i FEPAS Nominations Usage Declarations Summary for Monthly Forward Sub-products - 08/2017

ELIGIBLE SUPPLIER	PRODUCT CODE	TOTAL NOM USG MW	PRODUCT USG_DCL_SHARE
Elig.Supplier_01	2016A01P01	111	24.13%
Elig.Supplier_01	2017A01P01	22	15.17%
Elig.Supplier_01	2017A02P02	30	20.69%
Elig.Supplier_02	2016A01P01	108	23.48%
Elig.Supplier_02	2017A01P01	33	22.76%
Elig.Supplier_02	2017A02P02	30	20.69%
Elig.Supplier_03	2016A01P01	97	21.09%
Elig.Supplier_03	2017A01P01	31	21.38%
Elig.Supplier_03	2017A02P02	30	20.69%
Elig.Supplier_04	2016A01P01	42	9.13%
Elig.Supplier_04	2017A01P01	10	6.90%
Elig.Supplier_04	2017A02P02	20	13.79%
Elig.Supplier_05	2016A01P01	53	11.52%
Elig.Supplier_05	2017A01P01	6	4.14%
Elig.Supplier_05	2017A02P02	14	9.66%
Elig.Supplier_06	2016A01P01	20	4.35%
Elig.Supplier_06	2017A01P01	6	4.14%
Elig.Supplier_06	2017A02P02	6	4.14%
Elig.Supplier_07	2016A01P01	15	3.26%
Elig.Supplier_07	2017A01P01	8	5.52%
Elig.Supplier_07	2017A02P02	5	3.45%
Elig.Supplier_08	2017A01P01	10	6.90%
Elig.Supplier_09	2017A01P01	4	2.76%
Elig.Supplier_09	2017A02P02	5	3.45%
Elig.Supplier_10	2017A01P01	9	6.21%
Elig.Supplier_10	2017A02P02	2	1.38%
Elig.Supplier_11	2016A01P01	9	1.96%
Elig.Supplier_12	2016A01P01	2	0.44%
Elig.Supplier_12	2017A02P02	2	1.38%
Elig.Supplier_14	2017A01P01	2	1.38%
Elig.Supplier_15	2016A01P01	1	0.22%
Elig.Supplier_16	2017A01P01	3	2.07%

Elig.Supplier_16	2017A02P02	1	0.69%
Elig.Supplier_17	2016A01P01	2	0.44%
Elig.Supplier_17	2017A01P01	1	0.69%

* Eligible suppliers and traders ranking is updated every month according to Table 12.of this report.

Table.11j FEPAS Nominations Usage Declarations Summary for Monthly Forward Sub-products - 09/2017

ELIGIBLE SUPPLIER	PRODUCT CODE	TOTAL NOM USG MW	PRODUCT USG_DCL_SHARE
Elig.Supplier_01	2016A01P01	114	24.78%
Elig.Supplier_01	2017A01P01	20	13.79%
Elig.Supplier_01	2017A02P02	30	20.69%
Elig.Supplier_01	2017A03P03	24	16.55%
Elig.Supplier_02	2016A01P01	108	23.48%
Elig.Supplier_02	2017A01P01	33	22.76%
Elig.Supplier_02	2017A02P02	30	20.69%
Elig.Supplier_02	2017A03P03	25	17.24%
Elig.Supplier_03	2016A01P01	97	21.09%
Elig.Supplier_03	2017A01P01	31	21.38%
Elig.Supplier_03	2017A02P02	30	20.69%
Elig.Supplier_03	2017A03P03	15	10.35%
Elig.Supplier_04	2016A01P01	42	9.13%
Elig.Supplier_04	2017A01P01	10	6.90%
Elig.Supplier_04	2017A02P02	20	13.79%
Elig.Supplier_04	2017A03P03	18	12.41%
Elig.Supplier_05	2016A01P01	53	11.52%
Elig.Supplier_05	2017A01P01	6	4.14%
Elig.Supplier_05	2017A02P02	14	9.66%
Elig.Supplier_05	2017A03P03	11	7.59%
Elig.Supplier_06	2016A01P01	20	4.35%
Elig.Supplier_06	2017A01P01	6	4.14%
Elig.Supplier_06	2017A02P02	6	4.14%
Elig.Supplier_06	2017A03P03	15	10.35%
Elig.Supplier_07	2016A01P01	15	3.26%
Elig.Supplier_07	2017A01P01	11	7.59%
Elig.Supplier_07	2017A02P02	5	3.45%
Elig.Supplier_07	2017A03P03	6	4.14%
Elig.Supplier_08	2017A01P01	10	6.90%
Elig.Supplier_08	2017A03P03	16	11.03%
Elig.Supplier_09	2017A01P01	4	2.76%
Elig.Supplier_09	2017A02P02	5	3.45%
Elig.Supplier_10	2017A01P01	9	6.21%
Elig.Supplier_10	2017A02P02	2	1.38%
Elig.Supplier_10	2017A03P03	3	2.07%
Elig.Supplier_11	2016A01P01	6	1.30%
Elig.Supplier_12	2016A01P01	2	0.44%
Elig.Supplier_12	2017A02P02	2	1.38%
Elig.Supplier_13	2017A03P03	5	3.45%
Elig.Supplier_14	2017A01P01	1	0.69%
Elig.Supplier_14	2017A03P03	2	1.38%
Elig.Supplier_15	2016A01P01	1	0.22%
Elig.Supplier_15	2017A03P03	1	0.69%
Elig.Supplier_16	2017A01P01	3	2.07%
Elig.Supplier_16	2017A02P02	1	0.69%



Elig.Supplier_17	2016A01P01	2	0.44%
Elig.Supplier_17	2017A01P01	1	0.69%
Elig.Trader_03	2017A03P03	4	2.76%

* Eligible suppliers and traders ranking is updated every month according to Table 12.of this report.

Table.11k FEPAS Nominations Usage Declarations Summary for Monthly Forward Sub-products - 10/2017

ELIGIBLE SUPPLIER	PRODUCT CODE	TOTAL NOM USG MW	PRODUCT USG_DCL_SHARE
Elig.Supplier_01	2016A01P01	111	24.13%
Elig.Supplier_01	2017A01P01	23	15.86%
Elig.Supplier_01	2017A02P02	30	20.69%
Elig.Supplier_01	2017A03P03	26	17.93%
Elig.Supplier_02	2016A01P01	108	23.48%
Elig.Supplier_02	2017A01P01	33	22.76%
Elig.Supplier_02	2017A02P02	30	20.69%
Elig.Supplier_02	2017A03P03	25	17.24%
Elig.Supplier_03	2016A01P01	97	21.09%
Elig.Supplier_03	2017A01P01	31	21.38%
Elig.Supplier_03	2017A02P02	30	20.69%
Elig.Supplier_03	2017A03P03	15	10.35%
Elig.Supplier_04	2016A01P01	45	9.78%
Elig.Supplier_04	2017A01P01	10	6.90%
Elig.Supplier_04	2017A02P02	20	13.79%
Elig.Supplier_04	2017A03P03	20	13.79%
Elig.Supplier_05	2016A01P01	53	11.52%
Elig.Supplier_05	2017A01P01	6	4.14%
Elig.Supplier_05	2017A02P02	14	9.66%
Elig.Supplier_05	2017A03P03	13	8.97%
Elig.Supplier_06	2016A01P01	20	4.35%
Elig.Supplier_06	2017A01P01	6	4.14%
Elig.Supplier_06	2017A02P02	6	4.14%
Elig.Supplier_06	2017A03P03	15	10.35%
Elig.Supplier_07	2016A01P01	15	3.26%
Elig.Supplier_07	2017A01P01	6	4.14%
Elig.Supplier_07	2017A02P02	5	3.45%
Elig.Supplier_07	2017A03P03	6	4.14%
Elig.Supplier_08	2017A01P01	10	6.90%
Elig.Supplier_08	2017A03P03	12	8.28%
Elig.Supplier_09	2017A01P01	6	4.14%
Elig.Supplier_09	2017A02P02	5	3.45%
Elig.Supplier_09	2017A03P03	1	0.69%
Elig.Supplier_10	2017A01P01	9	6.21%
Elig.Supplier_10	2017A02P02	2	1.38%
Elig.Supplier_10	2017A03P03	3	2.07%
Elig.Supplier_11	2016A01P01	6	1.30%
Elig.Supplier_12	2016A01P01	2	0.44%
Elig.Supplier_12	2017A02P02	2	1.38%
Elig.Supplier_13	2017A03P03	5	3.45%
Elig.Supplier_14	2017A01P01	2	1.38%
Elig.Supplier_14	2017A03P03	2	1.38%
Elig.Supplier_15	2016A01P01	1	0.22%
Elig.Supplier_15	2017A03P03	1	0.69%
Elig.Supplier_16	2017A01P01	2	1.38%



Elig.Supplier_16	2017A02P02	1	0.69%
Elig.Supplier_17	2016A01P01	2	0.44%
Elig.Supplier_17	2017A01P01	1	0.69%
Elig.Trader_03	2017A03P03	1	0.69%

* Eligible suppliers and traders ranking is updated every month according to Table 12.of this report.

Table.11I FEPAS Nominations Usage Declarations Summary for Monthly Forward Sub-products - 11/2017

ELIGIBLE SUPPLIER	PRODUCT CODE	TOTAL NOM USG MW	PRODUCT USG_DCL_SHARE
Elig.Supplier_01	2016A01P01	112	24.35%
Elig.Supplier_01	2017A01P01	22	15.17%
Elig.Supplier_01	2017A02P02	30	20.69%
Elig.Supplier_01	2017A03P03	29	20.00%
Elig.Supplier_02	2016A01P01	108	23.48%
Elig.Supplier_02	2017A01P01	33	22.76%
Elig.Supplier_02	2017A02P02	30	20.69%
Elig.Supplier_02	2017A03P03	25	17.24%
Elig.Supplier_03	2016A01P01	97	21.09%
Elig.Supplier_03	2017A01P01	31	21.38%
Elig.Supplier_03	2017A02P02	30	20.69%
Elig.Supplier_03	2017A03P03	15	10.35%
Elig.Supplier_04	2016A01P01	42	9.13%
Elig.Supplier_04	2017A01P01	10	6.90%
Elig.Supplier_04	2017A02P02	20	13.79%
Elig.Supplier_04	2017A03P03	18	12.41%
Elig.Supplier_05	2016A01P01	53	11.52%
Elig.Supplier_05	2017A01P01	6	4.14%
Elig.Supplier_05	2017A02P02	14	9.66%
Elig.Supplier_05	2017A03P03	11	7.59%
Elig.Supplier_06	2016A01P01	20	4.35%
Elig.Supplier_06	2017A01P01	6	4.14%
Elig.Supplier_06	2017A02P02	6	4.14%
Elig.Supplier_06	2017A03P03	15	10.35%
Elig.Supplier_07	2016A01P01	15	3.26%
Elig.Supplier_07	2017A01P01	6	4.14%
Elig.Supplier_07	2017A02P02	5	3.45%
Elig.Supplier_07	2017A03P03	6	4.14%
Elig.Supplier_08	2017A01P01	10	6.90%
Elig.Supplier_08	2017A03P03	10	6.90%
Elig.Supplier_09	2017A01P01	6	4.14%
Elig.Supplier_09	2017A02P02	5	3.45%
Elig.Supplier_10	2017A01P01	9	6.21%
Elig.Supplier_10	2017A02P02	2	1.38%
Elig.Supplier_10	2017A03P03	3	2.07%
Elig.Supplier_11	2016A01P01	8	1.74%
Elig.Supplier_12	2016A01P01	2	0.44%
Elig.Supplier_12	2017A02P02	2	1.38%
Elig.Supplier_13	2017A03P03	5	3.45%
Elig.Supplier_14	2017A01P01	2	1.38%
Elig.Supplier_14	2017A03P03	2	1.38%
Elig.Supplier_15	2016A01P01	1	0.22%
Elig.Supplier_15	2017A03P03	1	0.69%
Elig.Supplier_16	2017A01P01	1	0.69%

Elig.Supplier_16	2017A02P02	1	0.69%
Elig.Supplier_17	2016A01P01	2	0.44%
Elig.Supplier_17	2017A01P01	1	0.69%
Elig.Trader_03	2017A01P01	2	1.38%
Elig.Trader_03	2017A03P03	5	3.45%

* Eligible suppliers and traders ranking is updated every month according to Table 12.of this report.

Table.11p FEPAS Nominations Usage Declarations Summary for Monthly Forward Sub-products - 12/2017

ELIGIBLE SUPPLIER	PRODUCT CODE	TOTAL NOM USG MW	PRODUCT USG_DCL_SHARE
Elig.Supplier_01	2017A01P01	22	15.17%
Elig.Supplier_01	2017A02P02	30	20.69%
Elig.Supplier_01	2017A03P03	20	13.79%
Elig.Supplier_01	2017A04P04	140	19.50%
Elig.Supplier_02	2017A01P01	33	22.76%
Elig.Supplier_02	2017A02P02	30	20.69%
Elig.Supplier_02	2017A03P03	25	17.24%
Elig.Supplier_02	2017A04P04	125	17.41%
Elig.Supplier_03	2017A01P01	31	21.38%
Elig.Supplier_03	2017A02P02	30	20.69%
Elig.Supplier_03	2017A03P03	15	10.35%
Elig.Supplier_03	2017A04P04	151	21.03%
Elig.Supplier_04	2017A01P01	10	6.90%
Elig.Supplier_04	2017A02P02	20	13.79%
Elig.Supplier_04	2017A03P03	18	12.41%
Elig.Supplier_04	2017A04P04	65	9.05%
Elig.Supplier_05	2017A01P01	6	4.14%
Elig.Supplier_05	2017A02P02	14	9.66%
Elig.Supplier_05	2017A03P03	11	7.59%
Elig.Supplier_05	2017A04P04	56	7.80%
Elig.Supplier_06	2017A01P01	6	4.14%
Elig.Supplier_06	2017A02P02	6	4.14%
Elig.Supplier_06	2017A03P03	15	10.35%
Elig.Supplier_06	2017A04P04	24	3.34%
Elig.Supplier_07	2017A01P01	6	4.14%
Elig.Supplier_07	2017A02P02	5	3.45%
Elig.Supplier_07	2017A03P03	6	4.14%
Elig.Supplier_07	2017A04P04	28	3.90%
Elig.Supplier_08	2017A01P01	10	6.90%
Elig.Supplier_08	2017A03P03	10	6.90%
Elig.Supplier_08	2017A04P04	10	1.39%
Elig.Supplier_09	2017A01P01	6	4.14%
Elig.Supplier_09	2017A02P02	5	3.45%
Elig.Supplier_09	2017A03P03	10	6.90%
Elig.Supplier_09	2017A04P04	20	2.79%
Elig.Supplier_10	2017A01P01	9	6.21%
Elig.Supplier_10	2017A02P02	2	1.38%
Elig.Supplier_10	2017A03P03	3	2.07%
Elig.Supplier_11	2017A03P03	4	2.76%
Elig.Supplier_11	2017A04P04	11	1.53%
Elig.Supplier_12	2017A02P02	2	1.38%
Elig.Supplier_13	2017A03P03	5	3.45%
Elig.Supplier_13	2017A04P04	10	1.39%

Elig.Supplier_14	2017A03P03	1	0.69%
Elig.Supplier_14	2017A04P04	4	0.56%
Elig.Supplier_15	2017A03P03	1	0.69%
Elig.Supplier_15	2017A04P04	2	0.28%
Elig.Supplier_16	2017A01P01	1	0.69%
Elig.Supplier_16	2017A02P02	1	0.69%
Elig.Supplier_17	2017A01P01	1	0.69%
Elig.Supplier_17	2017A04P04	1	0.14%
Elig.Supplier_19	2017A04P04	2	0.28%
Elig.Trader_01	2017A04P04	45	6.27%
Elig.Trader_02	2017A01P01	4	2.76%
Elig.Trader_02	2017A03P03	1	0.69%
Elig.Trader_02	2017A04P04	24	3.34%

* Eligible suppliers and traders ranking is updated every month according to Table 12.of this report.

Table.11q FEPAS Nominations Usage Declarations Summary for Monthly Forward Sub-products - 01/2018

ELIGIBLE SUPPLIER	PRODUCT CODE	TOTAL NOM USG MW	PRODUCT USG_DCL_SHARE
Elig.Supplier_01	2017A01P01	22	15.17%
Elig.Supplier_01	2017A02P02	30	20.69%
Elig.Supplier_01	2017A03P03	20	13.79%
Elig.Supplier_01	2017A04P04	154	21.45%
Elig.Supplier_02	2017A01P01	33	22.76%
Elig.Supplier_02	2017A02P02	30	20.69%
Elig.Supplier_02	2017A03P03	25	17.24%
Elig.Supplier_02	2017A04P04	115	16.02%
Elig.Supplier_03	2017A01P01	31	21.38%
Elig.Supplier_03	2017A02P02	30	20.69%
Elig.Supplier_03	2017A03P03	15	10.35%
Elig.Supplier_03	2017A04P04	146	20.33%
Elig.Supplier_04	2017A01P01	10	6.90%
Elig.Supplier_04	2017A02P02	20	13.79%
Elig.Supplier_04	2017A03P03	18	12.41%
Elig.Supplier_04	2017A04P04	70	9.75%
Elig.Supplier_05	2017A01P01	6	4.14%
Elig.Supplier_05	2017A02P02	14	9.66%
Elig.Supplier_05	2017A03P03	11	7.59%
Elig.Supplier_05	2017A04P04	56	7.80%
Elig.Supplier_06	2017A01P01	6	4.14%
Elig.Supplier_06	2017A02P02	6	4.14%
Elig.Supplier_06	2017A03P03	15	10.35%
Elig.Supplier_06	2017A04P04	24	3.34%
Elig.Supplier_07	2017A01P01	6	4.14%
Elig.Supplier_07	2017A02P02	5	3.45%
Elig.Supplier_07	2017A03P03	6	4.14%
Elig.Supplier_07	2017A04P04	28	3.90%
Elig.Supplier_08	2017A01P01	10	6.90%
Elig.Supplier_08	2017A03P03	10	6.90%
Elig.Supplier_08	2017A04P04	19	2.65%
Elig.Supplier_09	2017A01P01	6	4.14%
Elig.Supplier_09	2017A02P02	5	3.45%
Elig.Supplier_09	2017A03P03	10	6.90%
Elig.Supplier_09	2017A04P04	10	1.39%

Elig.Supplier_10	2017A01P01	9	6.21%
Elig.Supplier_10	2017A02P02	2	1.38%
Elig.Supplier_10	2017A03P03	3	2.07%
Elig.Supplier_11	2017A03P03	4	2.76%
Elig.Supplier_11	2017A04P04	21	2.93%
Elig.Supplier_12	2017A02P02	2	1.38%
Elig.Supplier_13	2017A04P04	10	1.39%
Elig.Supplier_14	2017A01P01	1	0.69%
Elig.Supplier_14	2017A03P03	1	0.69%
Elig.Supplier_14	2017A04P04	4	0.56%
Elig.Supplier_15	2017A03P03	1	0.69%
Elig.Supplier_15	2017A04P04	2	0.28%
Elig.Supplier_16	2017A01P01	1	0.69%
Elig.Supplier_16	2017A02P02	1	0.69%
Elig.Supplier_17	2017A01P01	1	0.69%
Elig.Supplier_17	2017A04P04	1	0.14%
Elig.Supplier_19	2017A04P04	2	0.28%
Elig.Supplier_20	2017A04P04	1	0.14%
Elig.Trader_01	2017A04P04	45	6.27%
Elig.Trader_02	2017A01P01	3	2.07%
Elig.Trader_02	2017A03P03	6	4.14%
Elig.Trader_02	2017A04P04	10	1.39%

* Eligible suppliers and traders ranking is updated every month according to Table 12.of this report.

Table.11p FEPAS Nominations Usage Declarations Summary for Monthly Forward Sub-products - 02/2018

ELIGIBLE SUPPLIER	PRODUCT CODE	TOTAL NOM USG MW	PRODUCT USG_DCL_SHARE
Elig.Supplier_01	2017A01P01	22	15.17%
Elig.Supplier_01	2017A02P02	30	20.69%
Elig.Supplier_01	2017A03P03	20	13.79%
Elig.Supplier_01	2017A04P04	157	21.87%
Elig.Supplier_02	2017A01P01	33	22.76%
Elig.Supplier_02	2017A02P02	30	20.69%
Elig.Supplier_02	2017A03P03	25	17.24%
Elig.Supplier_02	2017A04P04	150	20.89%
Elig.Supplier_03	2017A01P01	31	21.38%
Elig.Supplier_03	2017A02P02	30	20.69%
Elig.Supplier_03	2017A03P03	15	10.35%
Elig.Supplier_03	2017A04P04	141	19.64%
Elig.Supplier_04	2017A01P01	10	6.90%
Elig.Supplier_04	2017A02P02	20	13.79%
Elig.Supplier_04	2017A03P03	18	12.41%
Elig.Supplier_04	2017A04P04	70	9.75%
Elig.Supplier_05	2017A01P01	6	4.14%
Elig.Supplier_05	2017A02P02	14	9.66%
Elig.Supplier_05	2017A03P03	11	7.59%
Elig.Supplier_05	2017A04P04	56	7.80%
Elig.Supplier_06	2017A01P01	6	4.14%
Elig.Supplier_06	2017A02P02	6	4.14%
Elig.Supplier_06	2017A03P03	15	10.35%
Elig.Supplier_06	2017A04P04	29	4.04%
Elig.Supplier_07	2017A01P01	6	4.14%
Elig.Supplier_07	2017A02P02	5	3.45%

Elig.Supplier_07	2017A03P03	6	4.14%
Elig.Supplier_07	2017A04P04	28	3.90%
Elig.Supplier_08	2017A01P01	10	6.90%
Elig.Supplier_08	2017A03P03	10	6.90%
Elig.Supplier_08	2017A04P04	15	2.09%
Elig.Supplier_09	2017A01P01	6	4.14%
Elig.Supplier_09	2017A02P02	5	3.45%
Elig.Supplier_09	2017A03P03	10	6.90%
Elig.Supplier_09	2017A04P04	12	1.67%
Elig.Supplier_10	2017A01P01	9	6.21%
Elig.Supplier_10	2017A02P02	2	1.38%
Elig.Supplier_10	2017A03P03	3	2.07%
Elig.Supplier_11	2017A03P03	4	2.76%
Elig.Supplier_11	2017A04P04	29	4.04%
Elig.Supplier_12	2017A02P02	2	1.38%
Elig.Supplier_13	2017A04P04	10	1.39%
Elig.Supplier_14	2017A01P01	1	0.69%
Elig.Supplier_14	2017A03P03	2	1.38%
Elig.Supplier_14	2017A04P04	4	0.56%
Elig.Supplier_15	2017A03P03	1	0.69%
Elig.Supplier_15	2017A04P04	2	0.28%
Elig.Supplier_16	2017A01P01	1	0.69%
Elig.Supplier_16	2017A02P02	1	0.69%
Elig.Supplier_17	2017A01P01	1	0.69%
Elig.Supplier_17	2017A04P04	1	0.14%
Elig.Supplier_18	2017A04P04	2	0.28%
Elig.Supplier_20	2017A04P04	2	0.28%
Elig.Trader_01	2017A04P04	10	1.39%
Elig.Trader_02	2017A03P03	5	3.45%
Elig.Trader_03	2017A01P01	3	2.07%

* Eligible suppliers and traders ranking is updated every month according to Table 12.of this report.

Table.11r FEPAS Nominations Usage Declarations Summary for Monthly Forward Sub-products - 03/2018

ELIGIBLE SUPPLIER	PRODUCT CODE	TOTAL NOM USG MW	PRODUCT USG_DCL_SHARE
Elig.Supplier_01	2017A02P02	30	20.69%
Elig.Supplier_01	2017A03P03	20	13.79%
Elig.Supplier_01	2017A04P04	120	16.71%
Elig.Supplier_01	2018A01P01	90	22.50%
Elig.Supplier_02	2017A02P02	30	20.69%
Elig.Supplier_02	2017A03P03	25	17.24%
Elig.Supplier_02	2017A04P04	160	22.28%
Elig.Supplier_02	2018A01P01	60	15.00%
Elig.Supplier_03	2017A02P02	30	20.69%
Elig.Supplier_03	2017A03P03	15	10.35%
Elig.Supplier_03	2017A04P04	151	21.03%
Elig.Supplier_03	2018A01P01	40	10.00%
Elig.Supplier_04	2017A02P02	20	13.79%
Elig.Supplier_04	2017A03P03	18	12.41%
Elig.Supplier_04	2017A04P04	70	9.75%
Elig.Supplier_04	2018A01P01	25	6.25%
Elig.Supplier_05	2017A02P02	14	9.66%
Elig.Supplier_05	2017A03P03	11	7.59%

Elig.Supplier_05	2017A04P04	56	7.80%
Elig.Supplier_05	2018A01P01	55	13.75%
Elig.Supplier_06	2017A02P02	6	4.14%
Elig.Supplier_06	2017A03P03	15	10.35%
Elig.Supplier_06	2017A04P04	29	4.04%
Elig.Supplier_06	2018A01P01	13	3.25%
Elig.Supplier_07	2017A02P02	5	3.45%
Elig.Supplier_07	2017A03P03	6	4.14%
Elig.Supplier_07	2017A04P04	29	4.04%
Elig.Supplier_07	2018A01P01	15	3.75%
Elig.Supplier_08	2017A03P03	10	6.90%
Elig.Supplier_08	2017A04P04	15	2.09%
Elig.Supplier_08	2018A01P01	15	3.75%
Elig.Supplier_09	2017A02P02	5	3.45%
Elig.Supplier_09	2017A03P03	10	6.90%
Elig.Supplier_09	2017A04P04	30	4.18%
Elig.Supplier_09	2018A01P01	15	3.75%
Elig.Supplier_10	2017A02P02	2	1.38%
Elig.Supplier_10	2017A03P03	3	2.07%
Elig.Supplier_10	2017A04P04	4	0.56%
Elig.Supplier_10	2018A01P01	8	2.00%
Elig.Supplier_11	2017A03P03	4	2.76%
Elig.Supplier_11	2017A04P04	21	2.93%
Elig.Supplier_11	2018A01P01	40	10.00%
Elig.Supplier_12	2017A02P02	2	1.38%
Elig.Supplier_12	2018A01P01	1	0.25%
Elig.Supplier_13	2017A04P04	10	1.39%
Elig.Supplier_13	2018A01P01	10	2.50%
Elig.Supplier_14	2017A03P03	2	1.38%
Elig.Supplier_14	2017A04P04	4	0.56%
Elig.Supplier_14	2018A01P01	2	0.50%
Elig.Supplier_15	2017A03P03	1	0.69%
Elig.Supplier_15	2017A04P04	2	0.28%
Elig.Supplier_16	2017A02P02	1	0.69%
Elig.Supplier_16	2018A01P01	1	0.25%
Elig.Supplier_17	2017A04P04	1	0.14%
Elig.Supplier_17	2018A01P01	2	0.50%
Elig.Supplier_18	2018A01P01	4	1.00%
Elig.Supplier_19	2017A04P04	5	0.70%
Elig.Trader_01	2017A04P04	10	1.39%
Elig.Trader_02	2017A03P03	5	3.45%
Elig.Trader_03	2017A04P04	1	0.14%
Elig.Trader_03	2018A01P01	4	1.00%

Where:

TOTAL NOM USG (MW):

Total Quantity of Usage Declarations (Nominated Quantity) for the Monthly Sub-product.

PRODUCT_USG_DCL_SHARE (%):

Total Quantity of Usage Declarations (Nominated Quantity) for the Monthly Sub-product as a percentage of the Total Sub-product quantity.

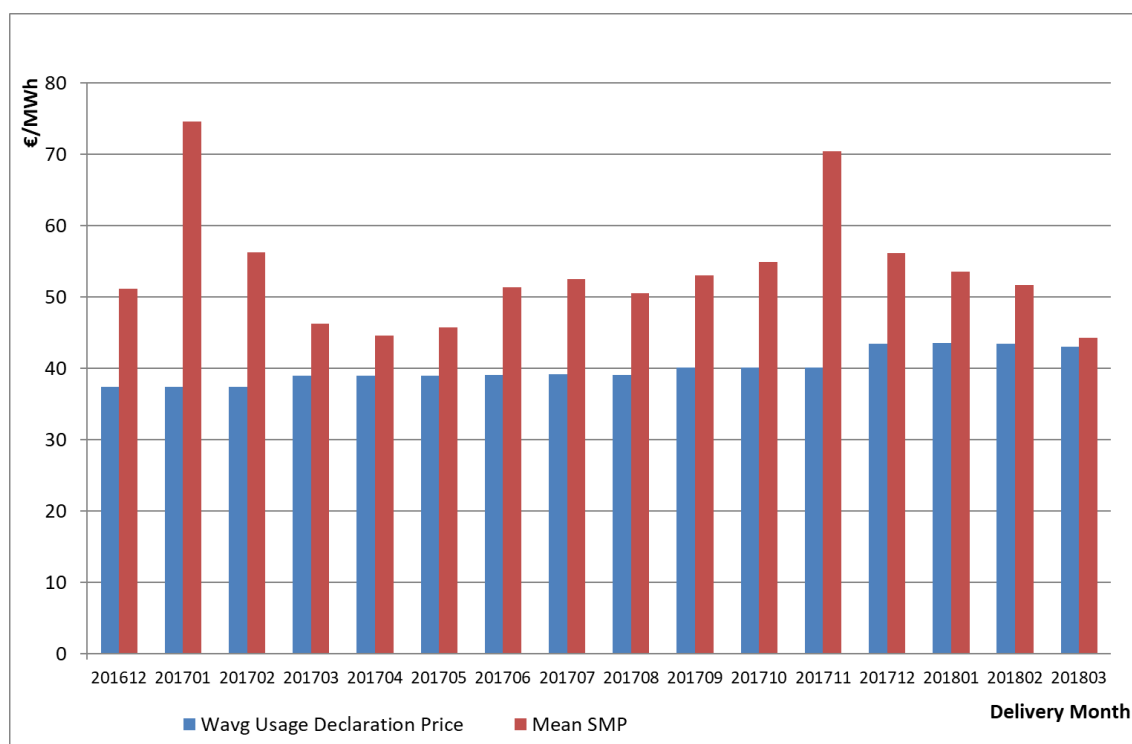
7. Supplementary Clearing of the Nominated Forward Daily/Hourly Sub-products in the Day-Ahead Market (DAS)

The market cycle of the Forward Electricity Products is concluded with the Supplementary Clearing of the Nominated Forward Daily/Hourly Sub-products in the Day-Ahead Market (DAS). Taking into consideration the actual market participation of the Eligible Suppliers and Traders (Load Declarations for domestic consumers and exports), the quantities of the Nominated Monthly Forward Sub-products, the valuation of the quantities via the FEPAS Bid Prices and DAS SMP prices LAGIE calculates the benefit/loss for each Eligible Supplier and Trader as specified in the PECFEPAS provisions.

Weighted Average Price of Usage Declarations

Figure 20. illustrates the Monthly Average System Marginal Price of the Day-Ahead Market (SMP in red colour) and the Weighted Monthly Average Price of the quantities of the effectuated Usage Declarations/Nominations (in blue colour) related to the corresponding Bid Auction Price. The Secondary Market Prices are not included in the latter.

Figure.20 Weighted Monthly Average Price of the effectuated Usage Declarations/Nominations and Monthly Average System Marginal Price of the DAS



Benefit of the Eligible Suppliers and Traders

Table.12 summarizes the benefit (or equivalently the transfer of market surplus of PPC) of the Eligible Suppliers and Traders, for each Delivery Month and in Total, up to March 2018. Column ‘DAS_DAEP’ presents the original valuation of their total Day-Ahead Energy Purchases in (€) while the column “NASC+NASC_OBLM” presents the relative to the quantities of the Usage Declarations Net Amounts of the Supplementary Clearing which represent the aforesaid benefit. The Secondary Market prices are not used under the Supplementary Clearing. The Net Amounts of the Supplementary clearing correspond to the 92% of the valuation of the Usage Declarations (the 8% is prepaid by the Eligible Suppliers to PPC).

Table.12 Benefit of the Eligible Suppliers and Traders according to the DAS Supplementary Clearing results

	12 2016		First Quarter 2017			Second Quarter 2017			Third Quarter 2017			Fourth Quarter 2017			01 2018			02 2018		03 2018			12 2016 – 03 2018	
Delivery Month	DAS_DAEP (€)	NASC + NASC OBLM (€)	DAS_DAEP (€)	NASC +	NASC OBLM (€)	DAS_DAEP (€)	NASC +	NASC OBLM (€)	DAS_DAEP (€)	NASC +	NASC OBLM (€)	DAS_DAEP (€)	NASC +	NASC OBLM (€)	DAS_DAEP (€)	NASC +	NASC OBLM (€)	DAS_DAEP (€)	NASC + NASC OBLM (€)	DAS_DAEP (€)	NASC + NASC OBLM (€)	NASC + NASC OBLM (€)	NASC + NASC OBLM (€)	
Elig.Supplier_01	7,078,327	- 1,367,094	23,030,923	-	5,901,807	19,766,991	-	3,950,893	26,840,011	-	6,369,191	30,029,092	-	9,843,697	9,645,214	-2166243.039	8,801,378	-1716728.875	8,250,884	-930411.6124	-	-	32,246,065	
Elig.Supplier_02	6,411,493	- 1,321,806	23,007,156	-	5,919,033	19,524,237	-	3,924,610	26,602,320	-	6,441,228	30,487,492	-	9,916,110	8,744,768	-1971683.543	8,298,278	-1731825.258	8,038,543	-897009.2792	-	-	32,123,305	
Elig.Supplier_03	6,089,371	- 1,205,193	24,280,127	-	5,368,249	18,896,774	-	3,626,571	25,747,180	-	5,914,237	30,350,201	-	9,191,821	9,926,561	-2100901.12	8,361,726	-1607636.076	7,759,700	-733710.9929	-	-	29,748,318	
Elig.Supplier_04	2,134,288	- 573,107	7,452,556	-	2,563,578	6,797,191	-	1,601,960	9,992,997	-	2,755,641	12,730,585	-	4,658,225	4,687,462	-1159199.249	4,151,304	-906300.4945	4,074,020	-469474.7636	-	-	14,687,485	
Elig.Supplier_05	2,043,143	- 546,503	9,038,702	-	2,830,052	6,913,649	-	1,719,715	9,077,410	-	2,780,792	11,811,957	-	4,301,439	3,614,421	-859961.8657	3,170,268	-678844.343	3,486,327	-463720.9606	-	-	14,181,029	
Elig.Supplier_06	1,290,481	- 248,643	4,666,922	-	1,105,530	4,554,052	-	744,715	6,560,251	-	1,309,835	7,158,852	-	2,334,849	2,343,831	-505058.544	2,235,264	-432186.47	2,305,198	-209090.3012	-	-	6,889,908	
Elig.Supplier_07	1,749,159	- 185,805	5,196,926	-	975,762	3,538,863	-	629,736	5,933,926	-	1,068,884	5,472,324	-	1,709,853	1,796,575	-435281.3966	1,504,224	-329766.5145	1,745,657	-189405.1004	-	-	5,524,493	
Elig.Supplier_08	-	-	2,282,147	-	39,939	9,738,963	-	93,066	14,638,126	-	445,769	13,148,971	-	873,453	1,763,933	-215133.1904	3,583,355	-275196.481	5,510,878	-115718.7854	-	-	2,058,275	
Elig.Supplier_09	-	-	50,905	-	9,466	283,321	-	60,925	796,735	-	209,465	2,688,329	-	830,562	1,150,667	-285359.7676	1,118,321	-254233.3197	1,097,749	-104535.6276	-	-	1,754,547	
Elig.Supplier_10	-	-	357,718	-	47,008	1,276,530	-	188,599	2,121,181	-	365,082	2,153,533	-	549,428	694,083	-143712.605	621,139	-115197.3193	557,800	-50665.11052	-	-	1,459,691	
Elig.Supplier_11	103,512	- 32,971	386,632	-	150,075	380,170	-	86,825	600,160	-	168,082	1,722,217	-	443,478	1,244,831	-201093.8484	1,296,201	-206571.5807	1,267,755	-138369.3309	-	-	1,428,066	
Elig.Trader_01	-	-	-	-	-	-	-	-	-	-	1,680,478	-	443,627	1,044,304	-240554.7133	215,720	-41712.0363	107,765	-12078.5679	-	-	737,972		
Elig.Supplier_12	88,261	- 22,435	304,594	-	114,811	337,400	-	89,180	455,607	-	143,673	443,680	-	183,424	79,953	-24335.60729	70,011	-19630.53852	75,418	-12078.57028	-	-	609,567	
Elig.Supplier_13	-	-	-	-	-	-	-	-	462,497	-	46,770	1,969,634	-	321,722	398,292	-88959.47	379,090	-67781.87	704,885	-66082	-	-	591,315	
Elig.Trader_02	-	-	-	-	-	-	-	-	-	-	-	2,329,844	-	281,082	1,672,984	-171700.4145	1,545,365	-40382.455	1,308,103	-18430.99	-	-	511,596	
Elig.Supplier_14	-	-	7,325	-	1,406	89,101	-	20,589	315,692	-	66,046	642,332	-	172,385	328,757	-56557.71089	290,817	-47643.65029	319,789	-22651.79644	-	-	387,280	
Elig.Supplier_15	62,496	- 12,425	258,178	-	53,377	168,701	-	27,958	210,076	-	48,674	330,046	-	108,207	131,891	-28056.801	116,463	-21571.041	104,261	-7485.662	-	-	307,756	
Elig.Supplier_16	-	-	21,233	-	3,811	215,174	-	31,599	441,560	-	106,337	337,605	-	109,134	79,713	-23106.16699	68,595	-18498.0734	64,494	-10634.52992	-	-	303,120	
Elig.Supplier_17	102,435	- 20,695	368,404	-	84,786	306,369	-	28,673	336,418	-	46,338	374,510	-	67,643	103,564	-17363.41634	95,364	-14208.71237	93,856	-4345.740466	-	-	284,054	
Elig.Trader_03	-	-	-	-	-	-	-	-	154,316	-	37,416	408,893	-	162,277	-	0	105,522	-27938.913	165,380	-19987.71148	-	-	247,619	
Elig.Supplier_18	-	-	-	-	-	-	-	-	-	-	-	-	-	-	49,322	-9632.473513	102,372	-13382.00116	198,108	-19234.7	-	-	42,249	
Elig.Supplier_19	-	-	-	-	-	-	-	-	-	-	-	-	-	-	38,775	-7484.965644	75,162	-11370.62414	89,558	-3415.478904	-	-	22,271	
Elig.Supplier_20	-	-	-	-	-	-	-	-	-	-	-	90,979	-	21,708	-	0	-	0	-	0	-	-	21,708	
Elig.Trader_04	-	-	-	-	-	-	-	-	1,432,065	-	13,299	-	-	-	-	0	-	0	-	0	-	-	13,299	
Total	27,152,965	- 5,536,678	100,710,448	-	25,168,689	92,787,486	-	16,825,616	132,718,528	-	28,337,359	156,361,554	-	46,524,123	49,539,901	- 10,711,380	46,205,938	- 8,578,607	47,326,131	- 4,498,538	-	-	146,180,989	

Where:

DAS_DAEP (€): The debit of the eligible Supplier/ Trader for the Load Declarations which were included in DAS during the reference month of physical delivery.

NASC+NASC_OBLM (€): The net value of the debits/credit of the eligible Supplier/ Trader from the Supplementary DAS clearing according to article 41 of the Power Exchange Code for Forward Electricity Products Auctions, which represent the benefit from the usage of the Forward Products over the physical delivery month.

The final debit of the eligible Supplier/ Trader is equal to: DAS_DAEP+NASC+NASC OBLM

Utilization Factor of Daily Sub-Products in DAS

According to article 14 of PECFEPAS the Forward Electricity Products are defined as base products, i.e. with a fixed quantity for each dispatch period in its duration, which must be delivered physically and the aim of the Mechanism is to use these Products to meet the base load needs. For the monitoring of the right usage of the Products, the Market Operator has defined an Utilization Factor $UF_{i,t}$ for every Use Beneficiary (Holder) i for every dispatch period t :

$$UF_{i,t} = \frac{\min(\sum_{u=1}^U DAOD_{i,u,t}, \sum_a^A \sum_s^S NQ_{i,m,s,a})}{\sum_a^A \sum_s^S NQ_{i,m,s,a}}$$

Where:

$NQ_{i,m,s,a}$	The quantity of monthly sub-forwards, in MWh/h, of use declaration s from Holder i for the month m . The quantity corresponds to the total or part of the purchase declaration of the final classification table of purchase declarations of auction a for forward p .
$DAOD_{i,u,t}$	Load declaration u of Holder i submitted to DAS for dispatch period t for customers that consume energy in the interconnected system and network and/or load declaration u for exports, without prejudice to Article 40(2), provided that this declaration has been included in the DAS schedule of dispatch day d .

Figure.21, Table.13 and Table.14 illustrate the fluctuation of the Mean Hourly Utilization Factor of the Daily Sub-products:

- For all Holders and delivery months December 2016 – March 2018
- For each Holder during period: 01/12/2016 – 31/03/2018

The Utilization Factor is calculated:

- For all days (Avg Hourly UF (All-Days))
- For working days only (Avg Hourly UF (Working-Days)).

Figure.21a Mean Hourly Utilization Factor of Daily Sub-Products for every physical delivery month.



Figure.21b Mean Hourly Utilization Factor of Daily Sub-Products for every physical delivery month.





Table.13 Mean Hourly Utilization Factor of Daily Sub-Products for every physical delivery month.

Delivery month		1	2	3	4	5	6	7	8	9	10	11	12	13	14	15	16	17	18	19	20	21	22	23	24	Avg. UFs
201612	All Days	88%	86%	86%	86%	86%	86%	90%	93%	95%	96%	97%	97%	97%	97%	96%	96%	96%	96%	96%	96%	95%	94%	91%	89%	93%
	Working Days	89%	87%	87%	87%	87%	87%	93%	97%	99%	99%	99%	99%	99%	99%	99%	99%	99%	99%	98%	98%	98%	97%	92%	91%	95%
201701	All Days	92%	90%	90%	90%	89%	89%	92%	96%	97%	98%	98%	98%	98%	98%	98%	98%	98%	98%	98%	98%	98%	97%	95%	94%	95%
	Working Days	93%	91%	90%	90%	89%	90%	95%	99%	100%	100%	100%	100%	100%	100%	100%	100%	100%	100%	100%	99%	99%	98%	95%	94%	97%
201702	All Days	92%	92%	92%	92%	92%	92%	94%	96%	97%	98%	98%	99%	99%	98%	98%	98%	97%	97%	97%	97%	97%	93%	92%	96%	96%
	Working Days	93%	92%	92%	92%	92%	92%	96%	98%	98%	99%	100%	100%	100%	100%	99%	99%	99%	99%	98%	98%	98%	93%	93%	97%	97%
201703	All Days	81%	79%	79%	79%	79%	79%	81%	84%	86%	87%	87%	87%	87%	87%	86%	86%	85%	85%	86%	86%	86%	85%	81%	80%	84%
	Working Days	82%	80%	80%	80%	80%	80%	84%	86%	88%	90%	90%	90%	90%	89%	89%	89%	89%	88%	89%	88%	88%	87%	82%	81%	86%
201704	All Days	85%	84%	83%	82%	82%	82%	84%	87%	88%	89%	89%	90%	90%	90%	90%	89%	88%	88%	87%	88%	89%	89%	87%	85%	87%
	Working Days	87%	85%	84%	84%	84%	85%	88%	91%	93%	93%	94%	94%	94%	94%	94%	93%	93%	92%	92%	92%	92%	92%	89%	87%	90%
201705	All Days	90%	88%	87%	87%	86%	86%	88%	90%	92%	94%	94%	94%	95%	95%	94%	93%	93%	93%	92%	91%	93%	93%	90%	89%	91%
	Working Days	89%	89%	88%	87%	87%	88%	90%	93%	94%	96%	96%	96%	96%	96%	96%	95%	95%	95%	95%	94%	95%	94%	91%	90%	93%
201706	All Days	86%	82%	80%	80%	80%	80%	82%	85%	89%	91%	92%	92%	92%	92%	91%	91%	90%	90%	90%	90%	90%	90%	87%	85%	87%
	Working Days	87%	84%	82%	82%	82%	82%	85%	89%	93%	95%	96%	96%	96%	96%	96%	96%	95%	95%	94%	94%	94%	93%	89%	88%	91%
201707	All Days	85%	84%	84%	84%	84%	84%	85%	86%	91%	93%	94%	94%	94%	94%	94%	94%	94%	94%	93%	93%	93%	93%	91%	89%	90%
	Working Days	86%	85%	85%	85%	85%	86%	87%	90%	96%	97%	98%	98%	98%	98%	98%	98%	97%	97%	97%	97%	97%	96%	93%	91%	93%
201708	All Days	92%	91%	91%	91%	91%	91%	91%	93%	94%	95%	95%	96%	96%	96%	95%	95%	95%	94%	94%	94%	94%	94%	92%	92%	93%
	Working Days	93%	92%	91%	91%	92%	92%	93%	95%	96%	97%	97%	98%	98%	98%	98%	97%	97%	97%	96%	96%	96%	96%	95%	94%	95%
201709	All Days	91%	92%	91%	91%	91%	91%	92%	94%	96%	97%	97%	98%	98%	98%	97%	97%	97%	96%	96%	96%	96%	96%	94%	92%	95%
	Working Days	92%	92%	92%	91%	91%	92%	94%	96%	98%	99%	99%	100%	100%	100%	100%	99%	99%	99%	99%	98%	98%	98%	95%	94%	96%
201710	All Days	87%	84%	84%	83%	83%	83%	85%	89%	92%	94%	94%	94%	94%	95%	94%	93%	93%	93%	92%	93%	94%	93%	89%	88%	90%
	Working Days	88%	86%	85%	84%	84%	85%	88%	93%	96%	97%	98%	98%	98%	98%	98%	97%	97%	97%	96%	97%	97%	95%	91%	90%	93%
201711	All Days	94%	92%	92%	91%	91%	91%	93%	96%	98%	98%	98%	98%	98%	98%	98%	98%	98%	98%	98%	97%	97%	97%	96%	95%	96%
	Working Days	95%	93%	93%	92%	92%	93%	96%	99%	100%	100%	100%	100%	100%	100%	100%	100%	100%	100%	99%	98%	98%	98%	96%	96%	97%
201712	All Days	95%	92%	91%	91%	90%	91%	93%	94%	96%	96%	97%	97%	97%	96%	96%	96%	96%	97%	97%	97%	97%	96%	95%	94%	95%
	Working Days	95%	93%	93%	92%	92%	93%	96%	98%	99%	99%	99%	99%	99%	99%	99%	99%	99%	99%	99%	99%	98%	98%	96%	95%	97%
201801	All Days	89%	86%	85%	84%	84%	85%	87%	90%	91%	92%	92%	92%	92%	91%	91%	91%	91%	91%	92%	92%	92%	91%	88%	87%	89%
	Working Days	90%	87%	86%	86%	86%	86%	90%	93%	94%	95%	95%	95%	94%	94%	94%	94%	94%	94%	95%	95%	95%	93%	91%	90%	92%
201802	All Days	93%	91%	90%	90%	90%	91%	94%	95%	96%	96%	96%	96%	96%	96%	95%	95%	95%	96%	96%	96%	96%	96%	93%	92%	94%
	Working Days	95%	93%	92%	92%	92%	93%	97%	99%	99%	99%	99%	99%	99%	99%	99%	99%	99%	99%	99%	99%	99%	99%	96%	95%	97%
201803	All Days	82%	78%	77%	76%	76%	76%	79%	84%	86%	87%	87%	87%	87%	87%	86%	85%	85%	85%	86%	86%	86%	84%	81%	80%	83%
	Working Days	83%	79%	78%	78%	78%	79%	82%	88%	90%	91%	91%	91%	91%	91%	90%	90%	89%	89%	89%	90%	90%	88%	84%	83%	86%



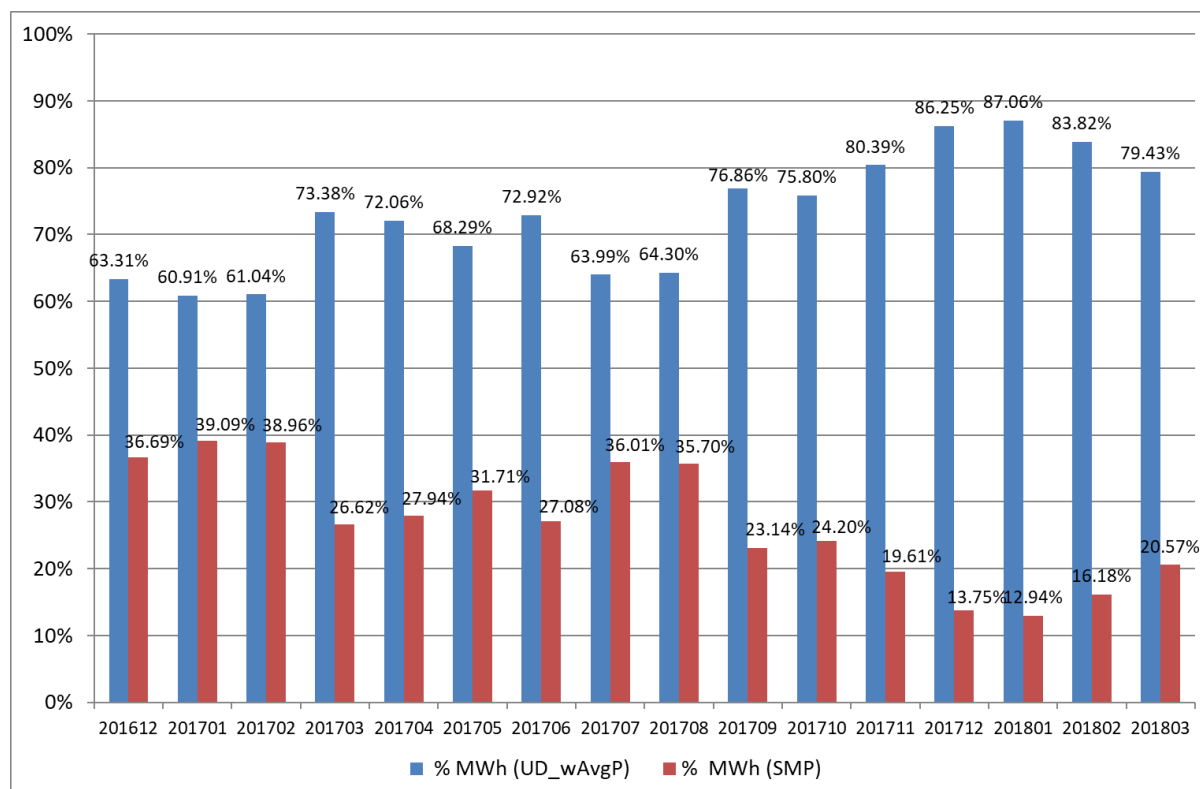
Table.14 Mean Hourly Utilization Factor of Daily Sub-Products for every eligible supplier/ trader for the period: 01/12/2016 – 31/03/2018

Eligible Supplier/ Trader	days	1	2	3	4	5	6	7	8	9	10	11	12	13	14	15	16	17	18	19	20	21	22	23	24	Avg. UFs
Elig.Supplier_01	All Days	98%	97%	96%	95%	95%	95%	97%	98%	99%	99%	99%	99%	99%	99%	99%	99%	99%	99%	99%	99%	99%	99%	98%	98%	
Elig.Supplier_01	Working Days	98%	97%	97%	96%	96%	97%	98%	99%	100%	100%	100%	100%	100%	100%	100%	100%	100%	100%	100%	100%	100%	100%	99%	99%	
Elig.Supplier_02	All Days	97%	95%	94%	93%	93%	94%	95%	96%	97%	97%	98%	98%	98%	97%	97%	97%	97%	97%	97%	98%	98%	97%	97%	97%	
Elig.Supplier_02	Working Days	98%	97%	96%	96%	96%	96%	98%	100%	100%	100%	100%	100%	100%	100%	100%	100%	100%	100%	100%	100%	100%	100%	99%	99%	
Elig.Supplier_03	All Days	97%	96%	96%	96%	95%	96%	96%	97%	98%	98%	99%	99%	99%	99%	98%	98%	98%	98%	99%	99%	99%	98%	98%	98%	
Elig.Supplier_03	Working Days	98%	98%	97%	97%	97%	97%	98%	99%	100%	100%	100%	100%	100%	100%	100%	100%	100%	100%	100%	100%	100%	99%	99%	99%	
Elig.Supplier_04	All Days	96%	93%	93%	93%	93%	92%	93%	96%	97%	98%	98%	98%	98%	98%	98%	98%	98%	98%	98%	98%	99%	99%	98%	97%	
Elig.Supplier_04	Working Days	95%	93%	94%	94%	94%	93%	95%	98%	99%	99%	99%	99%	99%	99%	99%	99%	99%	99%	99%	99%	100%	99%	98%	97%	
Elig.Supplier_05	All Days	94%	93%	93%	93%	93%	93%	94%	95%	96%	97%	97%	97%	97%	97%	97%	97%	97%	97%	97%	97%	97%	96%	95%	95%	
Elig.Supplier_05	Working Days	95%	94%	93%	93%	93%	93%	95%	97%	98%	99%	99%	99%	99%	99%	99%	98%	98%	98%	98%	98%	98%	97%	96%	96%	
Elig.Supplier_06	All Days	98%	98%	98%	98%	98%	98%	98%	99%	99%	99%	99%	99%	99%	99%	99%	99%	99%	99%	99%	99%	99%	99%	99%	99%	
Elig.Supplier_06	Working Days	99%	99%	99%	98%	98%	99%	99%	100%	100%	100%	100%	100%	100%	100%	100%	100%	100%	100%	100%	100%	100%	100%	99%	100%	
Elig.Supplier_07	All Days	97%	95%	94%	94%	93%	94%	95%	96%	98%	99%	99%	99%	99%	99%	99%	99%	99%	99%	99%	99%	99%	98%	97%	97%	
Elig.Supplier_07	Working Days	97%	95%	94%	94%	93%	94%	95%	98%	99%	100%	100%	100%	100%	100%	100%	100%	100%	100%	100%	100%	100%	100%	98%	97%	
Elig.Supplier_08	All Days	88%	79%	78%	78%	79%	78%	78%	79%	85%	87%	88%	87%	86%	86%	87%	87%	87%	86%	86%	89%	91%	91%	87%	83%	
Elig.Supplier_08	Working Days	90%	85%	84%	84%	84%	84%	84%	85%	92%	96%	96%	93%	93%	92%	93%	93%	94%	92%	93%	95%	96%	95%	92%	89%	
Elig.Supplier_09	All Days	82%	79%	79%	79%	78%	78%	79%	81%	84%	85%	86%	87%	87%	87%	86%	85%	85%	85%	85%	86%	87%	86%	85%	83%	
Elig.Supplier_09	Working Days	82%	81%	80%	81%	80%	80%	83%	86%	90%	92%	92%	93%	93%	93%	92%	91%	91%	91%	91%	92%	92%	92%	91%	89%	
Elig.Supplier_10	All Days	96%	90%	87%	84%	82%	83%	89%	95%	98%	100%	100%	100%	100%	100%	100%	100%	99%	99%	100%	100%	100%	100%	100%	96%	
Elig.Supplier_10	Working Days	96%	89%	86%	83%	82%	84%	90%	98%	100%	100%	100%	100%	100%	100%	100%	100%	100%	100%	100%	100%	100%	100%	100%	96%	
Elig.Supplier_11	All Days	68%	65%	64%	63%	61%	61%	65%	69%	73%	76%	78%	79%	80%	81%	79%	78%	77%	76%	76%	76%	77%	75%	73%	71%	
Elig.Supplier_11	Working Days	68%	64%	63%	62%	60%	60%	64%	70%	76%	79%	82%	83%	84%	84%	84%	82%	81%	80%	79%	78%	79%	77%	73%	71%	
Elig.Supplier_12	All Days	96%	96%	96%	96%	96%	96%	96%	96%	97%	97%	97%	97%	97%	97%	97%	97%	96%	96%	96%	96%	96%	96%	96%	96%	
Elig.Supplier_12	Working Days	96%	96%	96%	96%	96%	96%	96%	97%	98%	98%	98%	98%	98%	98%	98%	97%	97%	97%	97%	97%	97%	97%	97%	97%	
Elig.Supplier_13	All Days	100%	100%	100%	100%	100%	100%	100%	100%	100%	100%	100%	99%	100%	100%	100%	100%	100%	100%	100%	100%	99%	100%	100%	100%	
Elig.Supplier_13	Working Days	99%	100%	100%	100%	100%	100%	100%	100%	100%	100%	100%	99%	100%	100%	100%	100%	100%	100%	100%	100%	99%	100%	100%	100%	
Elig.Supplier_14	All Days	77%	74%	72%	70%	69%	70%	74%	78%	81%	85%	86%	87%	87%	87%	86%	85%	84%	84%	84%	85%	86%	86%	83%	81%	
Elig.Supplier_14	Working Days	73%	70%	69%	67%	66%	67%	73%	79%	82%	86%	87%	87%	88%	88%	87%	86%	84%	84%	85%	85%	85%	85%	82%	79%	
Elig.Supplier_15	All Days	100%	100%	100%	100%	100%	100%	100%	100%	100%	100%	100%	100%	100%	100%	100%	100%	100%	100%	100%	100%	100%	100%	100%	100%	
Elig.Supplier_15	Working Days	100%	100%	100%	100%	100%	100%	100%	100%	100%	100%	100%	100%	100%	100%	100%	100%	100%	100%	100%	100%	100%	100%	100%	100%	
Elig.Supplier_16	All Days	85%	83%	82%	82%	84%	85%	88%	90%	92%	93%	94%	94%	95%	95%	94%	94%	93%	93%	92%	92%	92%	92%	89%	86%	
Elig.Supplier_16	Working Days	86%	85%	84%	84%	87%	88%	91%	93%	95%	97%	97%	97%	97%	97%	97%	97%	97%	96%	95%	95%	94%	94%	91%	89%	
Elig.Supplier_17	All Days	61%	63%	63%	62%	63%	64%	74%	88%	92%	92%	91%	91%	91%	91%	86%	84%	86%	86%	83%	80%	80%	74%	48%	46%	
Elig.Supplier_17	Working Days	61%	63%	62%	61%	62%	63%	83%	100%	100%	100%	100%	100%	100%	100%	100%	98%	98%	98%	95%	90%	89%	81%	46%	44%	
Elig.Supplier_18	All Days	96%	96%	96%	96%	96%	96%	96%	96%	96%	96%	96%	96%	96%	96%	96%	96%	96%	96%	96%	96%	96%	96%	96%	96%	
Elig.Supplier_18	Working Days	96%	96%	96%	96%	96%	96%	96%	96%	96%	96%	96%	96%	96%	96%	96%	96%	96%	96%	96%	96%	96%	96%	96%	96%	
Elig.Supplier_20	All Days	97%	100%	100%	100%	100%	100%	100%	100%	100%	100%	100%	100%	100%	100%	100%	100%	100%	100%	100%	100%	100%	100%	100%	100%	
Elig.Supplier_20	Working Days	95%	100%	100%	100%	100%	100%	100%	100%	100%	100%	100%	100%	100%	100%	100%	100%	100%	100%	100%	100%	100%	100%	100%	100%	
Elig.Supplier_19	All Days	91%	89%	88%	88%	88%	89%	92%	95%	96%	97%	97%	97%	96%	96%	96%	96%	96%	96%	96%	96%	95%	93%	92%	94%	
Elig.Supplier_19	Working Days	91%	89%	88%	88%	88%	89%	92%	95%	96%	97%	97%	97%	96%	96%	96%	96%	96%	96%	96%	96%	95%	93%	92%	94%	
Elig.Trader_01	All Days	64%	51%	51%	51%	52%	52%	53%	57%	57%	58%	58%	58%	58%	58%	58%	58%	58%	58%	58%	58%	57%	56%	54%	54%	
Elig.Trader_01	Working Days	66%	57%	57%	57%	57%	58%	60%	66%	66%	66%	66%	66%	66%	66%	66%	66%	66%	66%	66%	66%	64%	62%	61%	60%	
Elig.Trader_02	All Days	98%	94%	93%	93%	93%	93%	92%	95%	97%	97%	97%	96%	95%	95%	96%	96%	96%	96%	96%	97%	97%	95%	95%	95%	
Elig.Trader_02	Working Days	96%	91%	91%	91%	91%	91%	91%	94%	100%	100%	100%	99%	97%	97%	98%	99%	97%	97%	97%	98%	98%	97%	97%	96%	
Elig.Trader_03	All Days	90%	91%	91%	91%	91%	91%	91%	92%	92%	93%	93%	93%	93%	93%	93%	93%	93%	93%	93%	93%	93%	91%	91%	91%	
Elig.Trader_03	Working Days	86%	90%	90%	90%	90%	90%	90%	92%	92%	93%	93%	93%	93%	93%	93%	93%	93%	93%	93%	93%	93%	90%	90%	91%	
Elig.Trader_04	All Days	0%	3%	6%	6%	6%	6%	3%	6%	61%	77%	84%	84%	84%	81%	81%	81%	81%	81%	81%	81%	87%	87%	87%	74%	
Elig.Trader_04	Working Days	0%	5%	10%	10%	10%	10%	5%	10%	86%	100%	100%	100%	100%	100%	100%	100%	100%	100%	100%	100%	100%	100%	100%	81%	

Load Declaration Analysis in DAS Supplementary Clearing

Figure.22 illustrates the Percentage of Load Declarations in DAS which cleared with the Weighted Average Price of Usage Declarations (UD_wAvgP) compared to the equivalent percentage cleared with the SMP, during DAS Supplementary Clearing for the Delivery Months: December 2016 – March 2018 (for all Eligible Suppliers/ Traders). Table.15 presents the results for each Eligible Supplier/ Trader and Delivery Month.

Figure.22 Percentage of Load Declarations cleared with SMP and Weighted Average Price of Usage declarations in DAS Supplementary Clearing (all Holders)



**Table.15 Percentage of Load Declarations cleared with SMP and Weighted Average Price of Usage Declarations in DAS Supplementary Clearing (per Holder and Delivery Month)**

Participant	201612		First Quarter 2017		Second Quarter 2017		Third Quarter 2017		Fourth Quarter 2017		201801		201802		201803		201612-201803	
	% MWh (UD_wAvgP)	% MWh (SMP)	% MWh (UD_wAvgP)	% MWh (SMP)	% MWh (UD_wAvgP)	% MWh (SMP)	% MWh (UD_wAvgP)	% MWh (SMP)	% MWh (UD_wAvgP)	% MWh (SMP)	% MWh (UD_wAvgP)	% MWh (SMP)	% MWh (UD_wAvgP)	% MWh (SMP)	% MWh (UD_wAvgP)	% MWh (SMP)	% MWh (UD_wAvgP)	% MWh (SMP)
Elig.Supplier_01	60.50%	39.50%	67.46%	32.54%	77.51%	22.49%	74.76%	25.24%	91.59%	8.41%	91.40%	8.60%	89.48%	10.52%	86.037%	13.963%	78.891%	21.109%
Elig.Supplier_02	63.99%	36.01%	67.86%	32.14%	78.50%	21.50%	77.15%	22.85%	88.98%	11.02%	89.07%	10.93%	93.40%	6.60%	93.457%	6.543%	80.234%	19.766%
Elig.Supplier_03	61.87%	38.13%	59.45%	40.55%	75.64%	24.36%	73.28%	26.72%	86.00%	14.00%	85.66%	14.34%	86.87%	13.13%	89.179%	10.821%	75.803%	24.197%
Elig.Supplier_04	81.89%	18.11%	87.20%	12.80%	92.33%	7.67%	88.49%	11.51%	98.58%	1.42%	98.91%	1.09%	98.05%	1.95%	94.677%	5.323%	93.026%	6.974%
Elig.Supplier_05	79.74%	20.26%	78.56%	21.44%	90.99%	9.01%	92.58%	7.42%	96.38%	3.62%	93.01%	6.99%	93.41%	6.59%	95.535%	4.465%	89.958%	10.042%
Elig.Supplier_06	59.57%	40.43%	60.97%	39.03%	63.98%	36.02%	64.49%	35.51%	91.54%	8.46%	85.46%	14.54%	86.77%	13.23%	88.502%	11.498%	73.744%	26.256%
Elig.Supplier_07	34.58%	65.42%	49.96%	50.04%	70.69%	29.31%	59.15%	40.85%	89.35%	10.65%	97.95%	2.05%	99.30%	0.70%	94.957%	5.043%	70.548%	29.452%
Elig.Supplier_08			11.34%	88.66%	6.75%	93.25%	11.79%	88.21%	25.64%	74.36%	53.69%	46.31%	35.11%	64.89%	21.997%	78.003%	17.442%	82.558%
Elig.Supplier_09			100.00%	0.00%	92.58%	7.42%	91.18%	8.82%	96.90%	3.10%	94.05%	5.95%	96.66%	3.34%	93.053%	6.947%	94.008%	5.992%
Elig.Supplier_10			72.35%	27.65%	72.67%	27.33%	62.98%	37.02%	78.63%	21.37%	72.34%	27.66%	71.07%	28.93%	74.450%	25.550%	69.407%	30.593%
Elig.Supplier_11	95.18%	4.82%	88.80%	11.20%	81.02%	18.98%	83.24%	16.76%	82.15%	17.85%	71.42%	28.58%	78.95%	21.05%	86.640%	13.360%	79.058%	20.942%
Elig.Trader_01									100.00%	0.00%	99.39%	0.61%	93.84%	6.16%	61.662%	38.338%	97.598%	2.402%
Elig.Supplier_12	76.88%	23.12%	95.04%	4.96%	98.84%	1.16%	99.73%	0.27%	100.00%	0.00%	97.55%	2.45%	97.61%	2.39%	96.561%	3.439%	97.292%	2.708%
Elig.Supplier_13							41.55%	58.45%	57.74%	42.26%	99.93%	0.07%	91.95%	8.05%	94.158%	5.842%	71.787%	28.213%
Elig.Trader_02									100.00%	0.00%	42.54%	57.46%	11.68%	88.32%	11.827%	88.173%	31.074%	68.926%
Elig.Supplier_14			100.00%	0.00%	98.89%	1.11%	78.41%	21.59%	88.09%	11.91%	72.00%	28.00%	76.10%	23.90%	76.231%	23.769%	77.858%	22.142%
Elig.Supplier_15	62.48%	37.52%	51.98%	48.02%	62.04%	37.96%	73.40%	26.60%	94.64%	5.36%	90.87%	9.13%	89.70%	10.30%	94.535%	5.465%	77.228%	22.772%
Elig.Supplier_16			98.60%	1.40%	64.81%	35.19%	84.06%	15.94%	88.58%	11.42%	91.44%	8.56%	91.84%	8.16%	93.756%	6.244%	82.259%	17.741%
Elig.Supplier_17	60.06%	39.94%	51.79%	48.21%	38.32%	61.68%	43.38%	56.62%	52.84%	47.16%	65.09%	34.91%	63.59%	36.41%	41.987%	58.013%	48.155%	51.845%
Elig.Trader_03							98.97%	1.03%	92.03%	7.97%			98.78%	1.22%	98.285%	1.715%	95.942%	4.058%
Elig.Supplier_18											88.26%	11.74%	67.87%	32.13%	65.473%	34.527%	68.993%	31.007%
Elig.Supplier_19	-										85.78%	14.22%	74.79%	25.21%	59.878%	40.122%	69.568%	30.432%
Elig.Supplier_20									100.00%	0.00%							91.672%	8.328%
Elig.Trader_04							3.15%	96.85%									3.151%	96.849%
Total	63.315%	36.685%	65.424%	34.576%	71.121%	28.879%	68.279%	31.721%	85.367%	14.633%	87.059%	12.941%	83.824%	16.176%	79.425%	20.575%	74.391%	25.609%

8. Consumption Market Shares Evolution

According to the provisions of Art. 7 and Art. 52 of the PECFEPAS, LAGIE is calculating the Consumption Market Shares of the Eligible Suppliers and reports the decrease of the PPC market share in the Wholesale and Retail Market. The DAS Consumption Market Shares reflects the volume of the Load Declarations of the Eligible Supplies and PPC submitted in the Day-Ahead Market (DAS) for domestic consumers for each Voltage Level.

Additional analysis regarding the penetration of the Eligible Suppliers in the retail market, including actual meter data and number of represented consumers per category of PECFEPAS Art. 7, will be provided at the time of this information being available by the System and Network Operators.

Market Shares in Day-Ahead Scheduling (DAS)

The evolution of the DAS Consumption Market Shares for the Eligible Suppliers and PPC illustrated in the following figures and tables concerns the period October 2016 – March 2018 (i.e. starting at the first Auction Month and up to the month relevant to this report). The relevant market shares on the August 2015 are also included in the report. The evolution of the presented market shares reflects accordingly the seasonality of the represented consumers’ loads.

Figure.23 Percentage (%) of the total DAS Consumption for each Eligible Supplier for the period October 2016 – March 2018 (including (%) for August 2015).

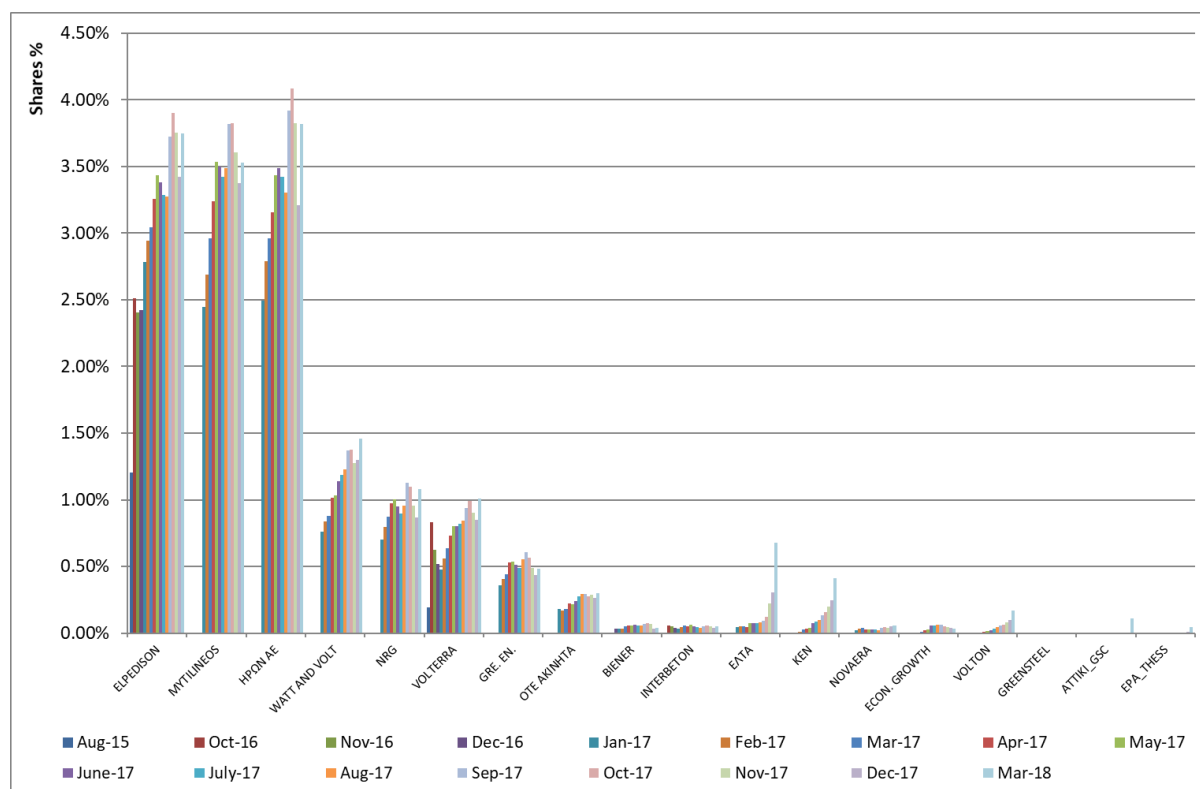


Figure.24 Percentage (%) of the total Consumption for PPC for the period October 2016 – March 2018 (including the reference (%) for August 2015 and projection according to targets).

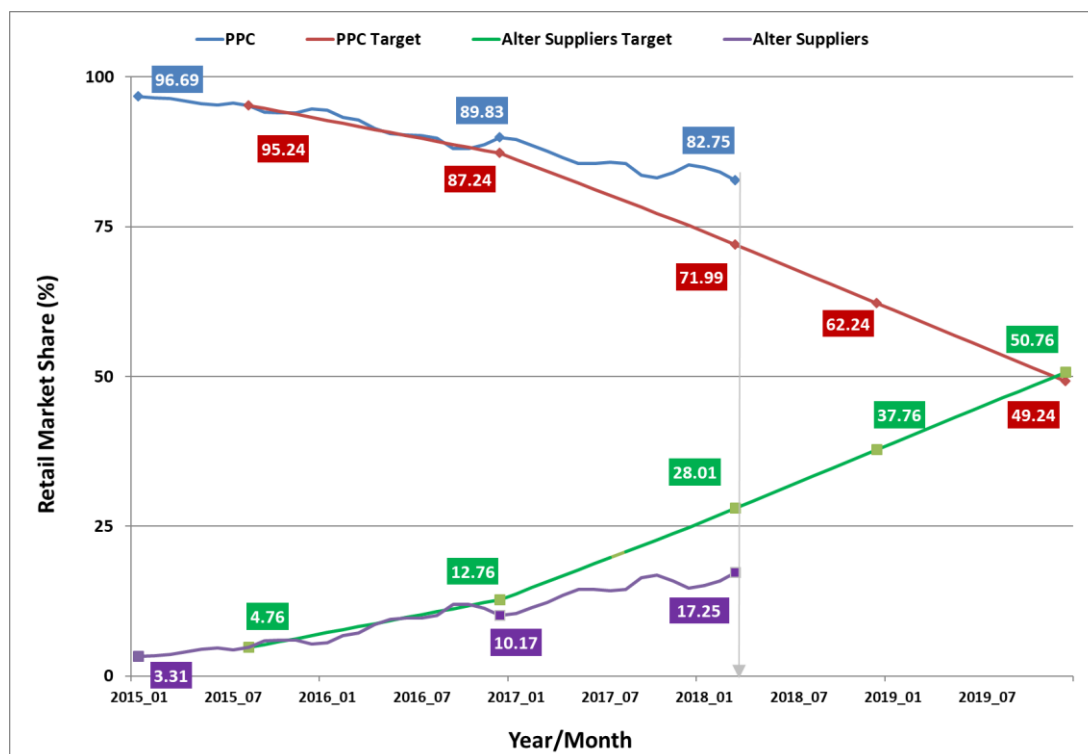


Table.16a Suppliers Consumption Market Shares (%) in DAS for each Load Level (HV-MV-LV) for the Interconnected System and Network for August 2015

Supplier	Year	Month	Monthly Quantities				Monthly Share			
			HV (MWh)	MV (MWh)	LV (MWh)	DAS-Consumption (MWh)	HV-Share (%)	MV-Share (%)	LV-Share (%)	DAS-Consumption (%)
ΔΕΗ	2015	8	496,011	941,990	2,987,473	4,425,474	99.65%	90.09%	96.26%	95.24%
ΔΕΗ ΠΚΥ	2015	8			11,596	11,596			0.37%	0.25%
ΗΡΩΝ	2015	8		36,176	31,544	67,720		3.46%	1.02%	1.46%
ELPEDISON	2015	8		23,775	32,096	55,870		2.27%	1.03%	1.20%
PROTERGIA	2015	8	106	28,809	16,838	45,753	0.02%	2.76%	0.54%	0.98%
GRE.EN	2015	8			11,261	11,261			0.36%	0.24%
WATT & VOLT	2015	8		1,217	8,933	10,150		0.12%	0.29%	0.22%
VOLTERRA	2015	8		9,003		9,003		0.86%		0.19%
NRG	2015	8		4,331	3,846	8,177		0.41%	0.12%	0.18%
ELPEDISON POWER	2015	8	782			782	0.16%			0.02%
HERON II VIOTIAS	2015	8	420			420	0.08%			0.01%
KORINTHOS POWER	2015	8	414			414	0.08%			0.01%
NOVAERA	2015	8		173		173		0.02%		0.00%
TITAN	2015	8		79		79		0.01%		0.00%
Totals :			497,733	1,045,552	3,103,586	4,646,871	100.00%	100.00%	100.00%	100.00%

Table.16b Suppliers Consumption Market Shares (%) in DAS for each Load Level (HV-MV-LV) for the Interconnected System and Network for the period October 2016 – December 2016

Supplier	Year	Month	Monthly Quantities				Monthly Share			
			HV (MWh)	MV (MWh)	LV (MWh)	DAS-Consumption (MWh)	HV-Share (%)	MV-Share (%)	LV-Share (%)	DAS-Consumption (%)
ΔΕΗ	2016	10	550,091	661,860	2,099,059	3,311,010	99.84%	68.91%	93.23%	87.99%
ΔΕΗ ΠΚΥ	2016	10			6,990	6,990			0.31%	0.19%
ΗΡΩΝ	2016	10		86,260	29,810	116,069		8.98%	1.32%	3.08%
PROTERGIA	2016	10	15	84,418	29,061	113,494	0.00%	8.79%	1.29%	3.02%
ELPEDISON	2016	10	700	53,613	40,258	94,571	0.13%	5.58%	1.79%	2.51%
NRG	2016	10		27,269	8,605	35,874		2.84%	0.38%	0.95%
VOLTERRA	2016	10		31,252		31,252		3.25%		0.83%
WATT & VOLT	2016	10		3,323	21,544	24,868		0.35%	0.96%	0.66%
GRE.EN	2016	10		8,602	9,034	17,636		0.90%	0.40%	0.47%
OTE AKINHΤΑ	2016	10			6,080	6,080			0.27%	0.16%
INTERBETON	2016	10		2,127	0	2,128		0.22%	0.00%	0.06%
ΕΛΤΑ	2016	10		829	1,050	1,879		0.09%	0.05%	0.05%
NOVAERA	2016	10		851		851		0.09%		0.02%
KORINTHOS POWER	2016	10	89			89	0.02%			0.00%
HERON II VIOTIAS	2016	10	52			52	0.01%			0.00%
Totals :			550,947	960,404	2,251,492	3,762,843	100.00%	100.00%	100.00%	100.00%
ΔΕΗ	2016	11	529,694	718,072	2,277,282	3,525,048	99.83%	71.84%	93.10%	88.65%
ΔΕΗ ΠΚΥ	2016	11			4,824	4,824			0.20%	0.12%
PROTERGIA	2016	11	243	80,651	37,921	118,815	0.05%	8.07%	1.55%	2.99%
ΗΡΩΝ	2016	11		86,170	30,446	116,616		8.62%	1.24%	2.93%
ELPEDISON	2016	11	425	50,217	44,965	95,606	0.08%	5.02%	1.84%	2.40%
NRG	2016	11		22,508	8,835	31,343		2.25%	0.36%	0.79%
WATT & VOLT	2016	11		5,392	25,366	30,758		0.54%	1.04%	0.77%
VOLTERRA	2016	11		24,742		24,742		2.48%		0.62%
GRE.EN	2016	11		8,007	8,762	16,769		0.80%	0.36%	0.42%
OTE AKINHΤΑ	2016	11			6,725	6,725			0.27%	0.17%
INTERBETON	2016	11		2,100	22	2,122		0.21%	0.00%	0.05%
ΕΛΤΑ	2016	11		686	932	1,617		0.07%	0.04%	0.04%
NOVAERA	2016	11		952		952		0.10%		0.02%
HERON II VIOTIAS	2016	11	171			171	0.03%			0.00%
KORINTHOS POWER	2016	11	78			78	0.01%			0.00%
Totals :			530,611	999,495	2,446,080	3,976,186	100.00%	100.00%	100.00%	100.00%
ΔΕΗ	2016	12	543,917	905,552	2,871,855	4,321,324	98.60%	77.11%	93.10%	89.83%
ΔΕΗ ΠΚΥ	2016	12			4,592	4,592			0.15%	0.10%
PROTERGIA	2016	12		76,066	53,491	129,558		6.48%	1.73%	2.69%
ELPEDISON	2016	12	7,642	51,734	57,242	116,619	1.39%	4.41%	1.86%	2.42%
ΗΡΩΝ	2016	12		77,368	35,584	112,952		6.59%	1.15%	2.35%
WATT & VOLT	2016	12		5,676	31,131	36,806		0.48%	1.01%	0.77%
NRG	2016	12		20,792	11,074	31,867		1.77%	0.36%	0.66%
VOLTERRA	2016	12		24,978		24,978		2.13%		0.52%
GRE.EN	2016	12		6,531	10,402	16,933		0.56%	0.34%	0.35%
OTE AKINHΤΑ	2016	12			8,164	8,164			0.26%	0.17%
ΕΛΤΑ	2016	12		826	1,166	1,991		0.07%	0.04%	0.04%
INTERBETON	2016	12		1,916	29	1,945		0.16%	0.00%	0.04%
VIENER	2016	12		1,724		1,724		0.15%		0.04%
NOVAERA	2016	12		1,191		1,191		0.10%		0.02%
KORINTHOS POWER	2016	12	90			90	0.02%			0.00%
Totals :			551,649	1,174,355	3,084,730	4,810,734	100.00%	100.00%	100.00%	100.00%

Table.16c Suppliers Market Shares (%) per voltage level (HV-MV-LV) in the Interconnected System based on their Load Declaration in DAS for the period January 2017 – March 2017

Supplier	Year	Month	Monthly Quantities				Monthly Share			
			HV (MWh)	MV (MWh)	LV (MWh)	DAS-Consumption (MWh)	HV-Share (%)	MV-Share (%)	LV-Share (%)	DAS-Consumption (%)
ΔΕΗ	2017	1	502.991	953.348	3.082.453	4.538.792	98,50%	78,56%	92,20%	89,57%
ΔΕΗ ΠΚΥ	2017	1			4.380	4.380			0,13%	0,09%
ELPEDISON	2017	1	7.665	54.549	78.968	141.182	1,50%	4,49%	2,36%	2,79%
ΗΡΩΝ	2017	1		76.151	50.235	126.386		6,27%	1,50%	2,49%
PROTERGIA	2017	1		68.168	55.897	124.065		5,62%	1,67%	2,45%
WATT & VOLT	2017	1		3.934	34.604	38.538		0,32%	1,04%	0,76%
NRG	2017	1		21.583	14.083	35.666		1,78%	0,42%	0,70%
VOLTERRA	2017	1		24.303		24.303		2,00%		0,48%
GRE.EN	2017	1		6.133	12.024	18.157		0,51%	0,36%	0,36%
ΟΤΕ ΑΚΙΝΗΤΑ	2017	1			9.105	9.105			0,27%	0,18%
ΕΛΤΑ	2017	1		902	1.305	2.207		0,07%	0,04%	0,04%
INTERBETON	2017	1		1.727	23	1.751		0,14%	0,00%	0,03%
VIENER	2017	1		1.574		1.574		0,13%		0,03%
NOVAERA	2017	1		1.197		1.197		0,10%		0,02%
Totals :			510.656	1.213.570	3.343.076	5.067.302	100,00%	100,00%	100,00%	100,00%
ΔΕΗ	2017	2	488.343	753.137	2.435.077	3.676.557	98,58%	74,29%	92,13%	88,55%
ΔΕΗ ΠΚΥ	2017	2			3.806	3.806			0,14%	0,09%
ELPEDISON	2017	2	7.009	56.513	58.613	122.135	1,42%	5,57%	2,22%	2,94%
ΗΡΩΝ	2017	2		75.120	40.757	115.877		7,41%	1,54%	2,79%
PROTERGIA	2017	2	4	66.249	45.261	111.514	0,00%	6,54%	1,71%	2,69%
WATT & VOLT	2017	2		6.253	28.533	34.785		0,62%	1,08%	0,84%
NRG	2017	2		21.263	11.806	33.069		2,10%	0,45%	0,80%
VOLTERRA	2017	2		23.157		23.157		2,28%		0,56%
GRE.EN	2017	2		5.911	10.842	16.753		0,58%	0,41%	0,40%
ΟΤΕ ΑΚΙΝΗΤΑ	2017	2			7.153	7.153			0,27%	0,17%
ΕΛΤΑ	2017	2		799	1.210	2.009		0,08%	0,05%	0,05%
INTERBETON	2017	2		1.805	21	1.826		0,18%	0,00%	0,04%
VIENER	2017	2		1.485		1.485		0,15%		0,04%
NOVAERA	2017	2		1.369		1.369		0,14%		0,03%
KEN	2017	2		477	0	477		0,05%	0,00%	0,01%
ECON.GROWTH	2017	2		178	7	185		0,02%	0,00%	0,00%
VOLTON	2017	2			7	7			0,00%	0,00%
Totals :			495.356	1.013.717	2.643.092	4.152.165	100,00%	100,00%	100,00%	100,00%
ΔΕΗ	2017	3	553.655	724.337	2.341.932	3.619.924	98,56%	70,61%	92,12%	87,65%
ΔΕΗ ΠΚΥ	2017	3			5.150	5.150			0,20%	0,12%
ELPEDISON	2017	3	7.865	66.260	51.451	125.576	1,40%	6,46%	2,02%	3,04%
PROTERGIA	2017	3	107	76.411	45.808	122.325	0,02%	7,45%	1,80%	2,96%
ΗΡΩΝ	2017	3		85.901	36.305	122.206		8,37%	1,43%	2,96%
WATT & VOLT	2017	3		7.289	29.113	36.403		0,71%	1,15%	0,88%
NRG	2017	3		24.200	11.895	36.095		2,36%	0,47%	0,87%
VOLTERRA	2017	3		26.237		26.237		2,56%		0,64%
GRE.EN	2017	3		6.806	11.526	18.332		0,66%	0,45%	0,44%
ΟΤΕ ΑΚΙΝΗΤΑ	2017	3			7.606	7.606			0,30%	0,18%
INTERBETON	2017	3		2.248	23	2.272		0,22%	0,00%	0,06%
VIENER	2017	3		2.226		2.226		0,22%		0,05%
ΕΛΤΑ	2017	3		834	1.245	2.078		0,08%	0,05%	0,05%
NOVAERA	2017	3		1.523		1.523		0,15%		0,04%
KEN	2017	3		1.010	87	1.097		0,10%	0,00%	0,03%
ECON.GROWTH	2017	3		449	11	460		0,04%	0,00%	0,01%
VOLTON	2017	3		115	42	157		0,01%	0,00%	0,00%
KORINTHOS POWER	2017	3	110			110	0,02%			0,00%
Totals :			561.737	1.025.847	2.542.196	4.129.779	100,00%	100,00%	100,00%	100,00%

Table.16d Suppliers Market Shares (%) per voltage level (HV-MV-LV) in the Interconnected System based on their Load Declaration in DAS for the period April 2017 – June 2017

Supplier	Year	Month	Monthly Quantities				Monthly Share			
			HV (MWh)	MV (MWh)	LV (MWh)	DAS-Consumption (MWh)	HV-Share (%)	MV-Share (%)	LV-Share (%)	DAS-Consumption (%)
ΔΕΗ	2017	4	442,092	533,766	1,725,809	2,701,667	98.46%	69.24%	90.59%	86.45%
ΔΕΗ ΠΚΥ	2017	4			5,290	5,290			0.28%	0.17%
ELPEDISON	2017	4	6,796	50,575	44,428	101,799	1.51%	6.56%	2.33%	3.26%
MYTILINEOS	2017	4	15	61,938	39,176	101,129	0.00%	8.03%	2.06%	3.24%
ΗΡΩΝ	2017	4		65,652	32,992	98,644		8.52%	1.73%	3.16%
WATT & VOLT	2017	4		4,972	26,737	31,709		0.64%	1.40%	1.01%
NRG	2017	4		19,587	10,777	30,364		2.54%	0.57%	0.97%
VOLTERRA	2017	4		22,883		22,883		2.97%		0.73%
GRE.EN	2017	4		5,008	11,595	16,604		0.65%	0.61%	0.53%
OTE AKINHTA	2017	4			6,988	6,988			0.37%	0.22%
VIENER	2017	4		1,819		1,819		0.24%		0.06%
INTERBETON	2017	4		1,666	20	1,686		0.22%	0.00%	0.05%
ΕΛΤΑ	2017	4		559	798	1,357		0.07%	0.04%	0.04%
KEN	2017	4		778	183	961		0.10%	0.01%	0.03%
NOVAERA	2017	4		946		946		0.12%		0.03%
ECON.GROWTH	2017	4		657	108	765		0.09%	0.01%	0.02%
VOLTON	2017	4		88	165	253		0.01%	0.01%	0.01%
KORINTHOS POWER	2017	4	84			84	0.02%			0.00%
Totals :			448,987	770,895	1,905,066	3,124,948	100.00%	100.00%	100.00%	100.00%
ΔΕΗ	2017	5	552,541	644,076	2,082,420	3,279,036	98.57%	65.94%	90.67%	85.52%
ΔΕΗ ΠΚΥ	2017	5			6,608	6,608			0.29%	0.17%
MYTILINEOS	2017	5	103	87,258	48,138	135,499	0.02%	8.93%	2.10%	3.53%
ΗΡΩΝ	2017	5		93,250	38,451	131,701		9.55%	1.67%	3.44%
ELPEDISON	2017	5	7,924	72,129	51,532	131,584	1.41%	7.38%	2.24%	3.43%
WATT & VOLT	2017	5		7,476	32,216	39,692		0.77%	1.40%	1.04%
NRG	2017	5		25,957	12,483	38,440		2.66%	0.54%	1.00%
VOLTERRA	2017	5		30,833		30,833		3.16%		0.80%
GRE.EN	2017	5		6,520	13,938	20,458		0.67%	0.61%	0.53%
OTE AKINHTA	2017	5			8,354	8,354			0.36%	0.22%
ΕΛΤΑ	2017	5		1,524	1,433	2,957		0.16%	0.06%	0.08%
INTERBETON	2017	5		2,271	38	2,309		0.23%	0.00%	0.06%
VIENER	2017	5		2,270		2,270		0.23%		0.06%
KEN	2017	5		1,152	444	1,596		0.12%	0.02%	0.04%
NOVAERA	2017	5		1,128		1,128		0.12%		0.03%
ECON.GROWTH	2017	5		874	188	1,061		0.09%	0.01%	0.03%
VOLTON	2017	5		101	392	493		0.01%	0.02%	0.01%
KORINTHOS POWER	2017	5	10			10	0.00%			0.00%
Totals :			560,578	976,818	2,296,635	3,834,031	100.00%	100.00%	100.00%	100.00%
ΔΕΗ	2017	6	550,994	719,276	2,325,535	3,595,805	98.58%	66.55%	90.62%	85.49%
ΔΕΗ ΠΚΥ	2017	6			5,098	5,098			0.20%	0.12%
MYTILINEOS	2017	6	175	92,778	54,163	147,116	0.03%	8.58%	2.11%	3.50%
ΗΡΩΝ	2017	6		101,626	45,022	146,648		9.40%	1.75%	3.49%
ELPEDISON	2017	6	7,781	77,155	57,268	142,204	1.39%	7.14%	2.23%	3.38%
WATT & VOLT	2017	6		9,127	38,708	47,835		0.84%	1.51%	1.14%
NRG	2017	6		27,882	12,196	40,079		2.58%	0.48%	0.95%
VOLTERRA	2017	6		33,737		33,737		3.12%		0.80%
GRE.EN	2017	6		6,842	14,776	21,617		0.63%	0.58%	0.51%
OTE AKINHTA	2017	6			10,112	10,112			0.39%	0.24%
ΕΛΤΑ	2017	6		1,720	1,549	3,269		0.16%	0.06%	0.08%
KEN	2017	6		2,292	764	3,057		0.21%	0.03%	0.07%
VIENER	2017	6		2,718		2,718		0.25%		0.06%
ECON.GROWTH	2017	6		2,170	285	2,454		0.20%	0.01%	0.06%
INTERBETON	2017	6		1,997	74	2,071		0.18%	0.00%	0.05%
NOVAERA	2017	6		1,205		1,205		0.11%		0.03%
VOLTON	2017	6		355	670	1,024		0.03%	0.03%	0.02%
GREENSTEEL	2017	6		2	0	2		0.00%	0.00%	0.00%
Totals :			558,950	1,080,883	2,566,219	4,206,052	100.00%	100.00%	100.00%	100.00%

Table.16e Suppliers Market Shares (%) per voltage level (HV-MV-LV) in the Interconnected System based on their Load Declaration in DAS for the period July - October 2017

			Monthly Quantities					Monthly Share		
Supplier	Year	Month	HV (MWh)	MV (MWh)	LV (MWh)	DAS-Consumption (MWh)	HV-Share (%)	MV-Share (%)	LV-Share (%)	DAS-Consumption (%)
Totals :			558,950	1,080,883	2,566,219	4,206,052	100.00%	100.00%	100.00%	100.00%
ΔΕΗ	2017	7	489,502	916,467	2,963,075	4,369,044	98.38%	69.17%	90.50%	85.72%
ΔΕΗ ΠΚΥ	2017	7			5,136	5,136			0.16%	0.10%
ΗΡΘΝ	2017	7		114,587	59,677	174,265		8.65%	1.82%	3.42%
ELPEDISON	2017	7	7,969	85,705	73,900	167,574	1.60%	6.47%	2.26%	3.29%
MYTILINEOS	2017	7	67	103,129	71,143	174,339	0.01%	7.78%	2.17%	3.42%
WATT & VOLT	2017	7		10,641	49,714	60,356		0.80%	1.52%	1.18%
NRG	2017	7		30,313	15,432	45,745		2.29%	0.47%	0.90%
VOLTERRA	2017	7		41,722		41,722		3.15%		0.82%
GRE.EN	2017	7		8,200	16,794	24,994		0.62%	0.51%	0.49%
OTE AKINHTA	2017	7			14,177	14,177			0.43%	0.28%
KEN	2017	7		2,861	1,541	4,402		0.22%	0.05%	0.09%
ΕΛΤΑ	2017	7		1,910	1,911	3,821		0.14%	0.06%	0.07%
VIENER	2017	7		2,964		2,964		0.22%		0.06%
ECON.GROWTH	2017	7		2,476	385	2,861		0.19%	0.01%	0.06%
INTERBETON	2017	7		2,182	78	2,260		0.16%	0.00%	0.04%
VOLTON	2017	7		450	1,229	1,679		0.03%	0.04%	0.03%
NOVAERA	2017	7		1,354		1,354		0.10%		0.03%
GREENSTEEL	2017	7		5	1	6		0.00%	0.00%	0.00%
Totals :			497,538	1,324,968	3,274,193	5,096,699	100.00%	100.00%	100.00%	100.00%
ΔΕΗ	2017	8	438,607	875,508	2,830,659	4,144,774	98.34%	69.93%	89.95%	85.55%
ΔΕΗ ΠΚΥ	2017	8			5,218	5,218			0.17%	0.11%
MYTILINEOS	2017	8	4	99,050	69,828	168,883	0.00%	7.91%	2.22%	3.49%
ΗΡΘΝ	2017	8		99,123	60,982	160,104		7.92%	1.94%	3.30%
ELPEDISON	2017	8	7,390	76,881	74,416	158,687	1.66%	6.14%	2.36%	3.28%
WATT & VOLT	2017	8		8,135	51,246	59,381		0.65%	1.63%	1.23%
NRG	2017	8		29,568	16,839	46,407		2.36%	0.54%	0.96%
VOLTERRA	2017	8		40,744		40,744		3.25%		0.84%
GRE.EN	2017	8		9,907	16,848	26,755		0.79%	0.54%	0.55%
OTE AKINHTA	2017	8			14,351	14,351			0.46%	0.30%
KEN	2017	8		2,453	2,206	4,659		0.20%	0.07%	0.10%
ΕΛΤΑ	2017	8		1,866	2,092	3,958		0.15%	0.07%	0.08%
ECON.GROWTH	2017	8		2,613	408	3,021		0.21%	0.01%	0.06%
VIENER	2017	8		2,897		2,897		0.23%		0.06%
VOLTON	2017	8		289	1,815	2,104		0.02%	0.06%	0.04%
INTERBETON	2017	8		1,927	79	2,006		0.15%	0.00%	0.04%
NOVAERA	2017	8		1,034		1,034		0.08%		0.02%
GREENSTEEL	2017	8		7	2	9		0.00%	0.00%	0.00%
Totals :			446,001	1,252,003	3,146,988	4,844,991	100.00%	100.00%	100.00%	100.00%
ΔΕΗ	2017	9	467,213	692,058	2,237,593	3,396,864	98.26%	64.38%	88.97%	83.56%
ΔΕΗ ΠΚΥ	2017	9			5,754	5,754			0.23%	0.14%
ΗΡΘΝ	2017	9		104,675	54,516	159,191		9.74%	2.17%	3.92%
MYTILINEOS	2017	9		94,115	61,087	155,201		8.76%	2.43%	3.82%
ELPEDISON	2017	9	8,261	80,434	62,625	151,319	1.74%	7.48%	2.49%	3.72%
WATT & VOLT	2017	9		11,725	43,986	55,711		1.09%	1.75%	1.37%
NRG	2017	9		30,991	14,890	45,881		2.88%	0.59%	1.13%
VOLTERRA	2017	9		38,225		38,225		3.56%		0.94%
GRE.EN	2017	9		8,866	15,783	24,649		0.82%	0.63%	0.61%
OTE AKINHTA	2017	9			11,922	11,922			0.47%	0.29%
KEN	2017	9		3,221	2,318	5,539		0.30%	0.09%	0.14%
ΕΛΤΑ	2017	9		1,530	2,141	3,671		0.14%	0.09%	0.09%
VIENER	2017	9		2,888		2,888		0.27%		0.07%
ECON.GROWTH	2017	9		2,116	440	2,556		0.20%	0.02%	0.06%
VOLTON	2017	9		423	1,807	2,230		0.04%	0.07%	0.05%
INTERBETON	2017	9		2,034	76	2,110		0.19%	0.00%	0.05%
NOVAERA	2017	9		1,601		1,601		0.15%		0.04%
GREENSTEEL	2017	9		11	2	13		0.00%	0.00%	0.00%
Totals :			475,474	1,074,912	2,514,940	4,065,325	100.00%	100.00%	100.00%	100.00%
ΔΕΗ	2017	10	509,503	631,061	2,040,378	3,180,942	96.86%	63.00%	88.81%	83.16%
ΔΕΗ ΠΚΥ	2017	10			5,997	5,997			0.26%	0.16%
ΗΡΘΝ	2017	10		106,074	50,146	156,220		10.59%	2.18%	4.08%
ELPEDISON	2017	10	15,974	77,135	56,081	149,189	3.04%	7.70%	2.44%	3.90%
MYTILINEOS	2017	10	523	88,949	56,791	146,263	0.10%	8.88%	2.47%	3.82%
WATT & VOLT	2017	10		10,979	41,558	52,537		1.10%	1.81%	1.37%
NRG	2017	10		28,140	13,777	41,916		2.81%	0.60%	1.10%
VOLTERRA	2017	10		37,843		37,843		3.78%		0.99%
GRE.EN	2017	10		7,512	14,146	21,658		0.75%	0.62%	0.57%
OTE AKINHTA	2017	10			10,639	10,639			0.46%	0.28%
KEN	2017	10		3,071	3,032	6,102		0.31%	0.13%	0.16%
ΕΛΤΑ	2017	10		2,225	2,456	4,681		0.22%	0.11%	0.12%
VIENER	2017	10		2,910		2,910		0.29%		0.08%
VOLTON	2017	10		367	2,120	2,487		0.04%	0.09%	0.07%
INTERBETON	2017	10		2,161	79	2,240		0.22%	0.00%	0.06%
ECON.GROWTH	2017	10		1,637	320	1,957		0.16%	0.01%	0.05%
NOVAERA	2017	10		1,653		1,653		0.16%		0.04%
GREENSTEEL	2017	10		6	1	7		0.00%	0.00%	0.00%
Totals :			526,000	1,001,721	2,297,520	3,825,241	100.00%	100.00%	100.00%	100.00%

Table.16f Suppliers Market Shares (%) per voltage level (HV-MV-LV) in the Interconnected System based on their Load Declaration in DAS for the period November - December 2017

Supplier	Year	Month	Monthly Quantities			Monthly Share				
			HV (MWh)	MV (MWh)	LV (MWh)	DAS-Consumption (MWh)	HV-Share (%)	MV-Share (%)	LV-Share (%)	DAS-Consumption (%)
ΔΕΗ	2017	11	523,115	689,391	2,228,996	3,441,502	96.85%	66.50%	88.56%	84.07%
ΔΕΗ ΠΚΥ	2017	11			5,743	5,743			0.23%	0.14%
ΗΡΩΝ	2017	11		102,301	54,302	156,603		9.87%	2.16%	3.83%
ELPEDISON	2017	11	16,202	73,175	64,256	153,633	3.00%	7.06%	2.55%	3.75%
MYTILINEOS	2017	11	840	80,058	66,656	147,554	0.16%	7.72%	2.65%	3.60%
WATT & VOLT	2017	11		7,833	44,427	52,260		0.76%	1.77%	1.28%
NRG	2017	11		24,963	14,249	39,212		2.41%	0.57%	0.96%
VOLTERRA	2017	11		36,899		36,899		3.56%		0.90%
GRE.EN	2017	11		6,193	13,821	20,014		0.60%	0.55%	0.49%
OTE AKINHTA	2017	11			11,673	11,673			0.46%	0.29%
ΕΛΤΑ	2017	11		4,948	4,066	9,014		0.48%	0.16%	0.22%
KEN	2017	11		2,816	5,297	8,113		0.27%	0.21%	0.20%
VOLTON	2017	11		389	2,901	3,290		0.04%	0.12%	0.08%
VIENER	2017	11		2,831		2,831		0.27%		0.07%
INTERBETON	2017	11		2,029	78	2,107		0.20%	0.00%	0.05%
ECON.GROWTH	2017	11		1,348	470	1,818		0.13%	0.02%	0.04%
NOVAERA	2017	11		1,569		1,569		0.15%		0.04%
GREENSTEEL	2017	11		7	1	8		0.00%	0.00%	0.00%
Totals :			540,157	1,036,751	2,516,938	4,093,845	100.00%	100.00%	100.00%	100.00%
ΔΕΗ		12	516,382	799,193	2,584,010	3,899,585	97.09%	71.49%	88.50%	85.34%
ΔΕΗ ΠΚΥ	2017	12			6,288	6,288			0.22%	0.14%
ELPEDISON	2017	12	14,777	66,526	74,954	156,257	2.78%	5.95%	2.57%	3.42%
MYTILINEOS	2017	12	668	73,577	79,832	154,077	0.13%	6.58%	2.73%	3.37%
ΗΡΩΝ	2017	12		85,122	61,423	146,545		7.61%	2.10%	3.21%
WATT & VOLT	2017	12		7,333	51,940	59,273		0.66%	1.78%	1.30%
NRG	2017	12		24,013	15,525	39,537		2.15%	0.53%	0.87%
VOLTERRA	2017	12		38,871		38,871		3.48%		0.85%
GRE.EN	2017	12		5,964	13,883	19,846		0.53%	0.48%	0.43%
ΕΛΤΑ	2017	12		7,418	6,576	13,993		0.66%	0.23%	0.31%
OTE AKINHTA	2017	12			11,975	11,975			0.41%	0.26%
KEN	2017	12		2,530	8,749	11,280		0.23%	0.30%	0.25%
VOLTON	2017	12		370	4,172	4,542		0.03%	0.14%	0.10%
NOVAERA	2017	12				2,286		0.20%		0.05%
ECON.GROWTH	2017	12		1,189	532	1,721		0.11%	0.02%	0.04%
INTERBETON	2017	12		1,592	80	1,672		0.14%	0.00%	0.04%
VIENER	2017	12		1,490		1,490		0.13%		0.03%
ΕΡΑ_THESS	2017	12		460		460		0.04%		0.01%
KORINTHOS POWER	2017	12	10			10	0.00%			0.00%
GREENSTEEL	2017	12		3	0	4		0.00%	0.00%	0.00%
Totals :			531,837	1,115,650	2,919,939	4,569,712	100.00%	100.00%	100.00%	100.00%

Table.16f Suppliers Market Shares (%) per voltage level (HV-MV-LV) in the Interconnected System based on their Load Declaration in DAS for January 2018

Supplier	Year	Month	Monthly Quantities			Monthly Share				
			HV (MWh)	MV (MWh)	LV (MWh)	DAS-Consumption (MWh)	HV-Share (%)	MV-Share (%)	LV-Share (%)	DAS-Consumption (%)
ΔΕΗ	2018	1	496,837	810,451	2,655,098	3,962,386	96.57%	70.93%	88.15%	84.86%
ΔΕΗ ΠΚΥ	2018	1			6,537	6,537			0.22%	0.14%
ELPEDISON	2018	1	16,952	67,480	77,950	162,382	3.29%	5.91%	2.59%	3.48%
MYTILINEOS	2018	1	719	72,322	85,863	158,904	0.14%	6.33%	2.85%	3.40%
ΗΡΩΝ	2018	1		82,502	66,684	149,186		7.22%	2.21%	3.20%
WATT & VOLT	2018	1		10,172	52,199	62,370		0.89%	1.73%	1.34%
NRG	2018	1		25,886	15,749	41,635		2.27%	0.52%	0.89%
VOLTERRA	2018	1		40,766		40,766		3.57%		0.87%
ΕΛΤΑ	2018	1		15,634	7,453	23,087		1.37%	0.25%	0.49%
GRE.EN	2018	1		6,166	14,080	20,246		0.54%	0.47%	0.43%
KEN	2018	1		2,762	11,187	13,949		0.24%	0.37%	0.30%
OTE AKINHTA	2018	1			12,826	12,826			0.43%	0.27%
VOLTON	2018	1		404	5,669	6,074		0.04%	0.19%	0.13%
NOVAERA	2018	1		2,211		2,211		0.19%		0.05%
INTERBETON	2018	1		1,838	83	1,921		0.16%	0.00%	0.04%
VIENER	2018	1		1,493		1,493		0.13%		0.03%
ECON.GROWTH	2018	1		1,012	468	1,480		0.09%	0.02%	0.03%
ΕΡΑ ΑΤΤΙΚΗΣ	2018	1		917		917		0.08%		0.02%
ZENIO	2018	1		588	128	716		0.05%	0.00%	0.02%
Totals :			514,508	1,142,605	3,011,974	4,669,087	100.00%	100.00%	100.00%	100.00%

Table.16g Suppliers Market Shares (%) per voltage level (HV-MV-LV) in the Interconnected System based on their Load Declaration in DAS for February - March 2018

			Monthly Quantities				Monthly Share			
Supplier	Year	Month	HV (MWh)	MV (MWh)	LV (MWh)	DAS-Consumption (MWh)	HV-Share (%)	MV-Share (%)	LV-Share (%)	DAS-Consumption (%)
Totals :			514,508	1,142,605	3,011,974	4,669,087	100.00%	100.00%	100.00%	100.00%
ΔΕΗ	2018	2	478,223	699,761	2,292,491	3,470,474	96.86%	68.74%	87.63%	84.08%
ΔΕΗ ΠΚΥ	2018	2			6,542	6,542			0.25%	0.16%
ELPEDISON	2018	2	14,702	62,431	70,530	147,663	2.98%	6.13%	2.70%	3.58%
MYTILINEOS	2018	2	810	68,298	73,519	142,627	0.16%	6.71%	2.81%	3.46%
ΗΡΩΝ	2018	2		77,121	63,167	140,288		7.58%	2.41%	3.40%
WATT & VOLT	2018	2		10,930	46,825	57,755		1.07%	1.79%	1.40%
NRG	2018	2		24,708	14,583	39,290		2.43%	0.56%	0.95%
VOLTERRA	2018	2		38,608		38,608		3.79%		0.94%
ΕΛΤΑ	2018	2		17,847	6,948	24,795		1.75%	0.27%	0.60%
GRE.EN	2018	2		5,825	12,721	18,546		0.57%	0.49%	0.45%
KEN	2018	2		2,781	10,980	13,761		0.27%	0.42%	0.33%
ΟΤΕ ΑΚΙΝΗΤΑ	2018	2			11,865	11,865			0.45%	0.29%
VOLTON	2018	2		349	5,215	5,564		0.03%	0.20%	0.13%
NOVAERA	2018	2		2,143		2,143		0.21%		0.05%
ΕΠΑ ΑΤΤΙΚΗΣ	2018	2		1,962		1,962		0.19%		0.05%
INTERBETON	2018	2		1,749	75	1,823		0.17%	0.00%	0.04%
ZENIO	2018	2		1,192	236	1,427		0.12%	0.01%	0.03%
VIENER	2018	2		1,354		1,354		0.13%		0.03%
GROWTH	2018	2		898	419	1,317		0.09%	0.02%	0.03%
Totals :			493,735	1,017,956	2,616,115	4,127,807	100.00%	100.00%	100.00%	100.00%
ΔΕΗ	2018	3	543,109	673,398	2,206,130	3,422,636	96.75%	65.18%	86.79%	82.75%
ΔΕΗ ΠΚΥ	2018	3			9,187	9,187			0.36%	0.22%
ΗΡΩΝ	2018	3		88,793	69,110	157,902		8.59%	2.72%	3.82%
ELPEDISON	2018	3	17,545	67,793	69,655	154,992	3.13%	6.56%	2.74%	3.75%
MYTILINEOS	2018	3	656	76,788	68,592	146,035	0.12%	7.43%	2.70%	3.53%
WATT & VOLT	2018	3		12,396	48,022	60,418		1.20%	1.89%	1.46%
NRG	2018	3		29,042	15,624	44,667		2.81%	0.61%	1.08%
VOLTERRA	2018	3		41,800		41,800		4.05%		1.01%
ΕΛΤΑ	2018	3		20,293	7,712	28,005		1.96%	0.30%	0.68%
GRE.EN	2018	3		6,249	13,716	19,965		0.60%	0.54%	0.48%
KEN	2018	3		3,364	13,684	17,047		0.33%	0.54%	0.41%
ΟΤΕ ΑΚΙΝΗΤΑ	2018	3			12,351	12,351			0.49%	0.30%
VOLTON	2018	3		377	6,733	7,111		0.04%	0.26%	0.17%
ΕΠΑ ΑΤΤΙΚΗΣ	2018	3		4,408	135	4,543		0.43%	0.01%	0.11%
NOVAERA	2018	3		2,358		2,358		0.23%		0.06%
INTERBETON	2018	3		1,994	83	2,078		0.19%	0.00%	0.05%
ZENIO	2018	3		1,388	580	1,968		0.13%	0.02%	0.05%
VIENER	2018	3		1,688		1,688		0.16%		0.04%
GROWTH	2018	3		976	466	1,442		0.09%	0.02%	0.03%
EUNICE_TRADING	2018	3			21	21			0.00%	0.00%
KORINTHOS POWER	2018	3	20			20	0.00%			0.00%
Totals :			561,330	1,033,105	2,541,800	4,136,234	100.00%	100.00%	100.00%	100.00%