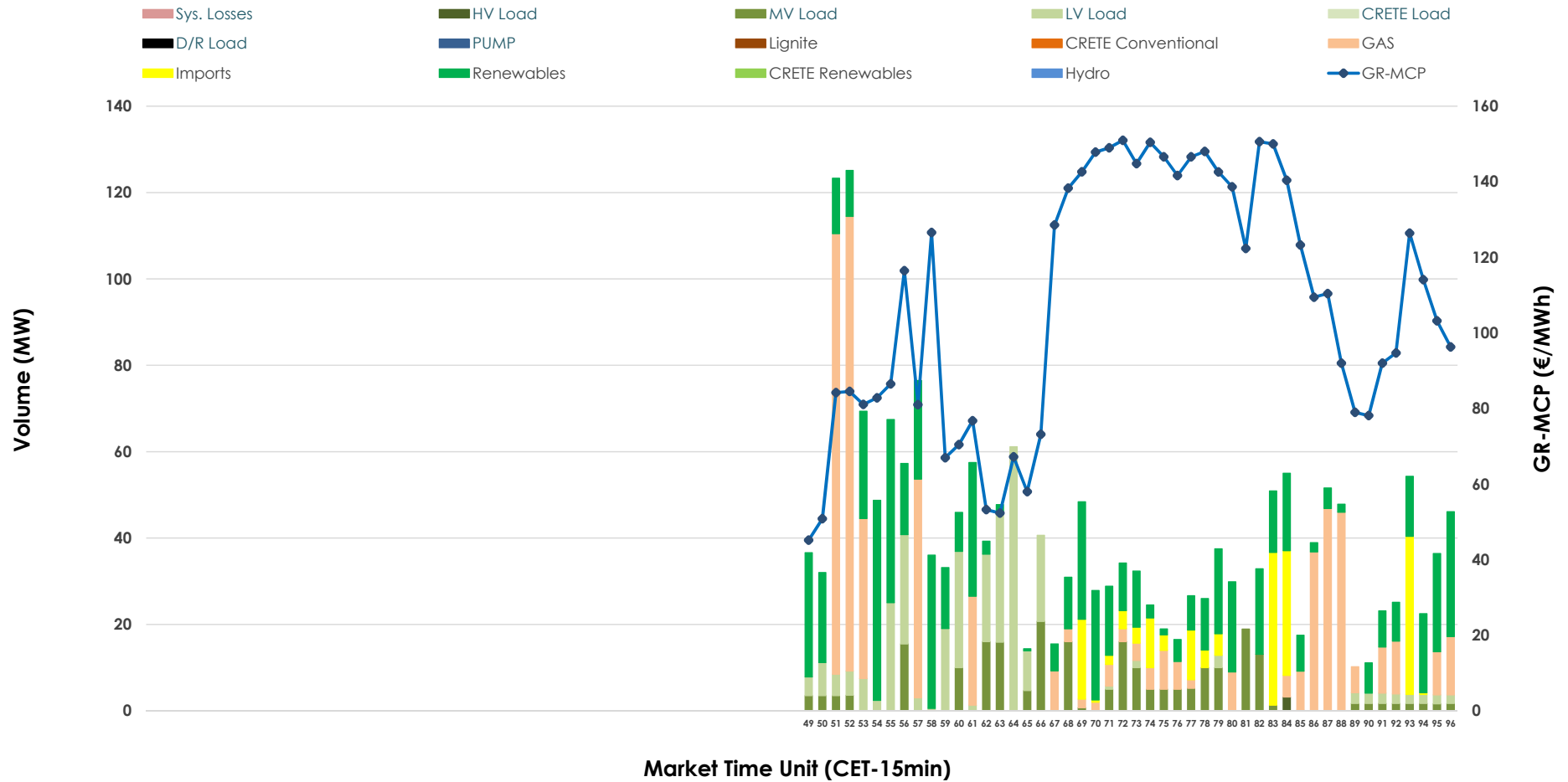


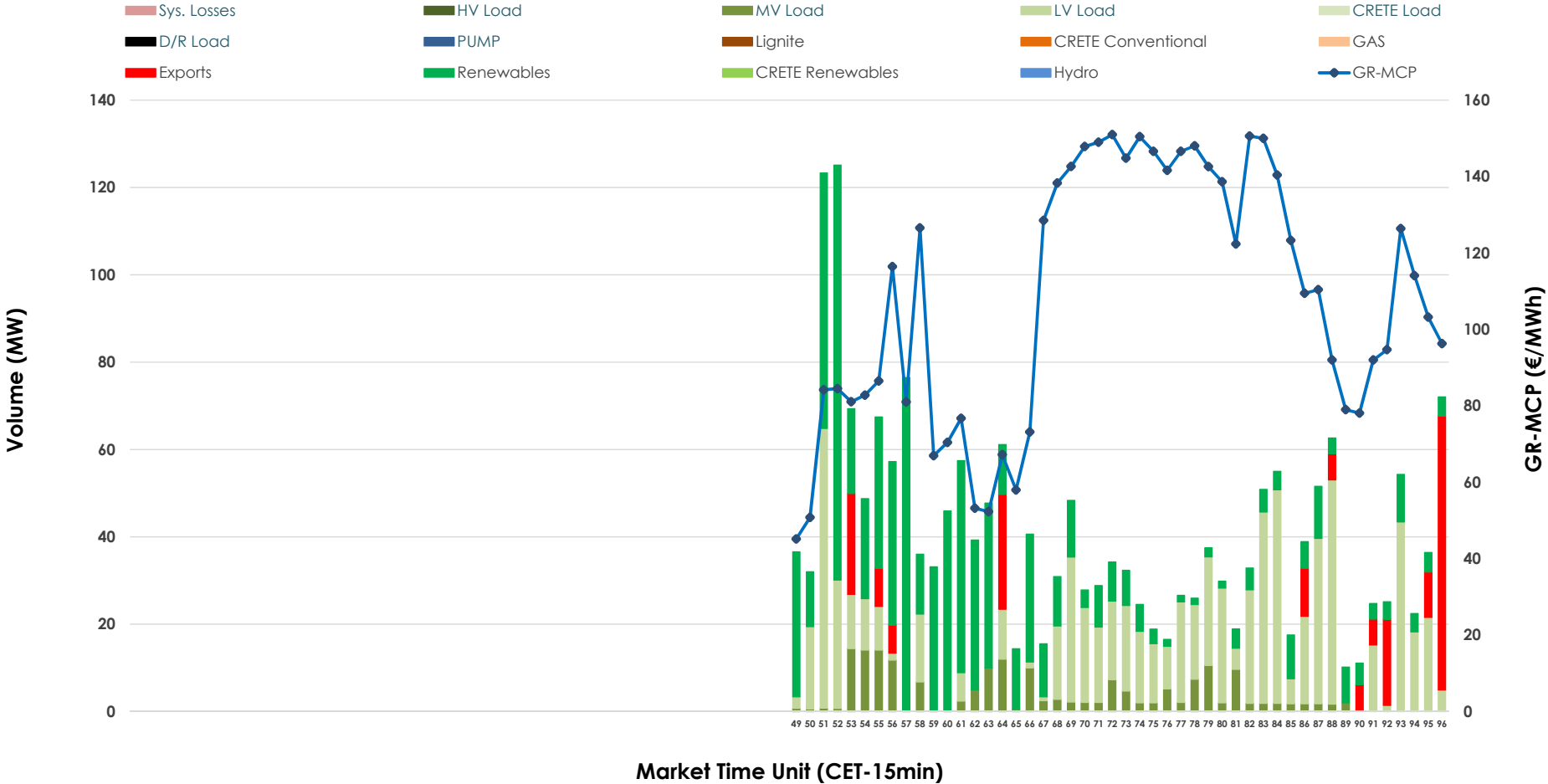


# IDA '3' Market Outlook

30.01.2026 IDA '3' Market - Sell



### 30.01.2026 IDA '3' Market - Buy



### GR Bidding Zone Weekly Figures

Delivery Day	24.01	25.01	26.01	27.01	28.01	29.01	30.01
	👇 -22%	👇 -26%	👆 6%	👆 16%	👇 -21%	👇 -22%	👆 43%
<b>Avg.MCP (€/MWh)</b>	134.62	99.17	105.52	122.71	96.53	75.38	107.42
<b>Max.MCP (€/MWh)</b>	158.82	138.36	207.65	208.50	152.00	115.58	150.97
<b>Min.MCP (€/MWh)</b>	103.80	2.90	58.16	43.40	49.88	0.10	45.17
	👇 -16%	👆 6%	👇 -23%	👆 16%	👇 -54%	👆 32%	👇 -24%
<b>Tot.Vol(GWh)</b>	2.30	2.43	1.87	2.18	1.00	1.32	1.00

### Trades by Order Type

Delivery Day		24.01	25.01	26.01	27.01	28.01	29.01	30.01	
<b>Ord Price Type</b>		<b>Sell &amp; Buy Trades in (GWh) per Price Type</b>							<b>(%)</b>
<b>PPT</b>	(S)	0.000	0.000	0.000	0.000	0.000	0.000	0.000	0.00%
<b>HBD</b>	(S)	0.798	0.682	0.924	0.945	0.461	0.641	0.457	91.68%
<b>BLK</b>	(S)	0.000	0.000	0.000	0.000	0.000	0.000	0.000	0.00%
<b>CPL</b>	(S)	0.351	0.532	0.014	0.144	0.039	0.018	0.042	8.32%
<b>PPT</b>	(B)	0.000	0.000	0.000	0.000	0.000	0.000	0.000	0.00%
<b>HBD</b>	(B)	0.653	1.013	0.929	0.423	0.458	0.652	0.452	90.66%
<b>BLK</b>	(B)	0.000	0.000	0.000	0.000	0.000	0.000	0.000	0.00%
<b>CPL</b>	(B)	0.496	0.201	0.008	0.666	0.041	0.007	0.047	9.34%
		<b>Sell &amp; Buy Orders Traded per Price Type</b>							<b>(%)</b>
<b>PPT</b>	(S)	0	0	0	0	0	0	0	0.00%
<b>HBD</b>	(S)	249	195	193	164	127	107	178	100.00%
<b>BLK</b>	(S)	0	0	0	0	0	0	0	0.00%
<b>PPT</b>	(B)	0	0	0	0	0	0	0	0.00%
<b>HBD</b>	(B)	189	219	306	271	163	414	208	100.00%
<b>BLK</b>	(B)	0	0	0	0	0	0	0	0.00%

**MCP** Market Clearing Price (€/MWh)  
**PPT** Priority Price-Taking  
**HBD** Hybrid  
**BLK** Block  
**CPL** Market Coupling Flow

### Trade's Volume Mix

		Sell - MWh		Buy - MWh	
<b>Lignite</b>	(0.0%)	0	0	0	(0.0%)
<b>Crete Conv.</b>	(0.0%)	0	0	0	(0.0%)
<b>Gas</b>	(29.5%)	144	0	0	(0.0%)
<b>Hydro</b>	(0.0%)	0	0	0	(0.0%)
<b>Imports</b>	(8.5%)	42	0	0	(0.0%)
<b>RES</b>	(34.7%)	170	209	209	(42.0%)
<b>Crete RES</b>	(0.0%)	0	0	0	(0.0%)
<b>HV Load</b>	(0.2%)	1	0	0	(0.0%)
<b>MV Load</b>	(11.9%)	58	46	46	(9.2%)
<b>LV Load</b>	(15.2%)	74	197	197	(39.5%)
<b>Crete Load</b>	(0.0%)	0	0	0	(0.0%)
<b>Pumping</b>	(0.0%)	0	0	0	(0.0%)
<b>Exports</b>		0	47	47	(9.3%)
<b>Sys.Losses</b>	(0.0%)	0	0	0	(0.0%)
<b>D/R Load</b>	(0.0%)	0	0	0	(0.0%)

