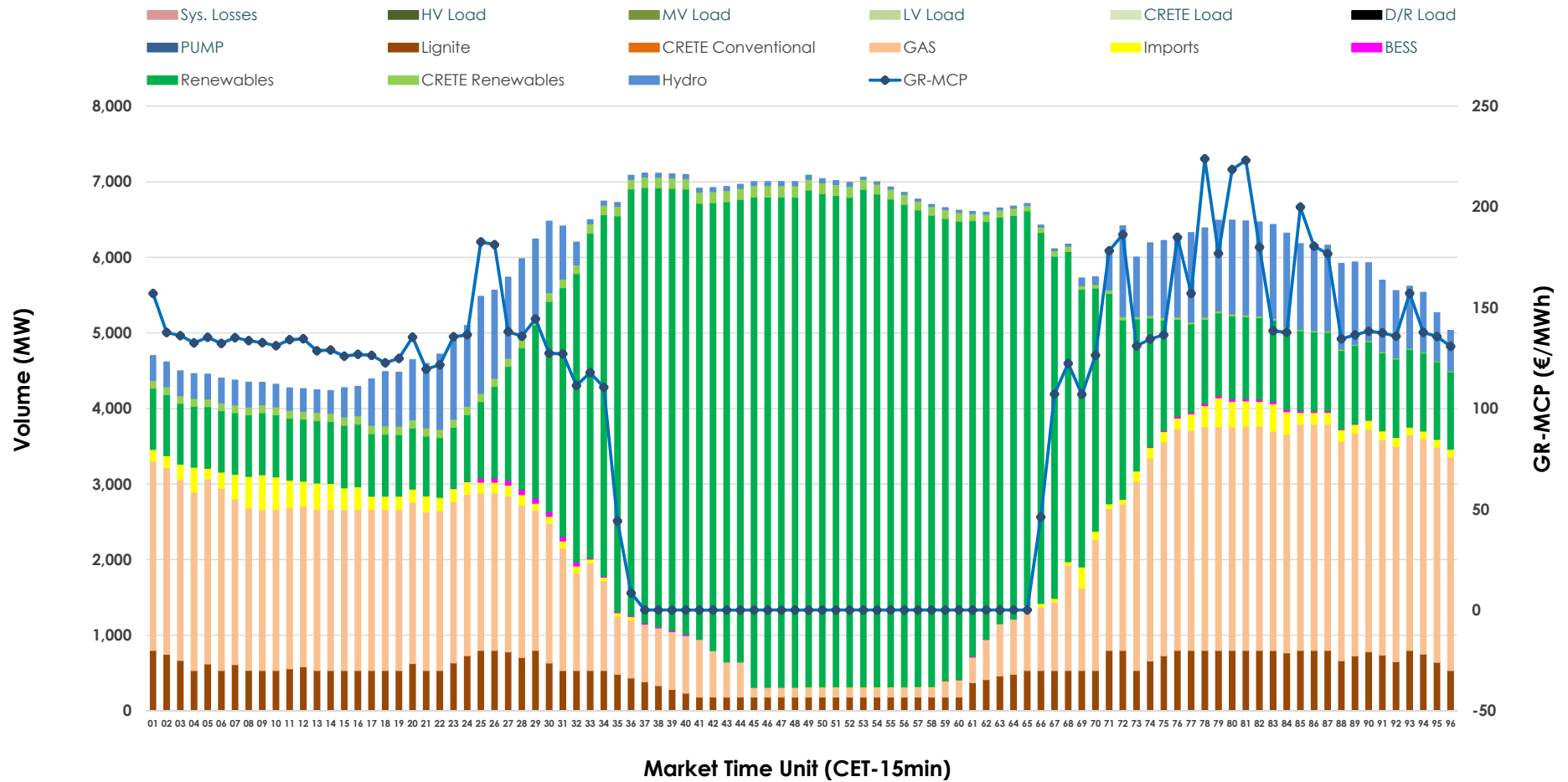


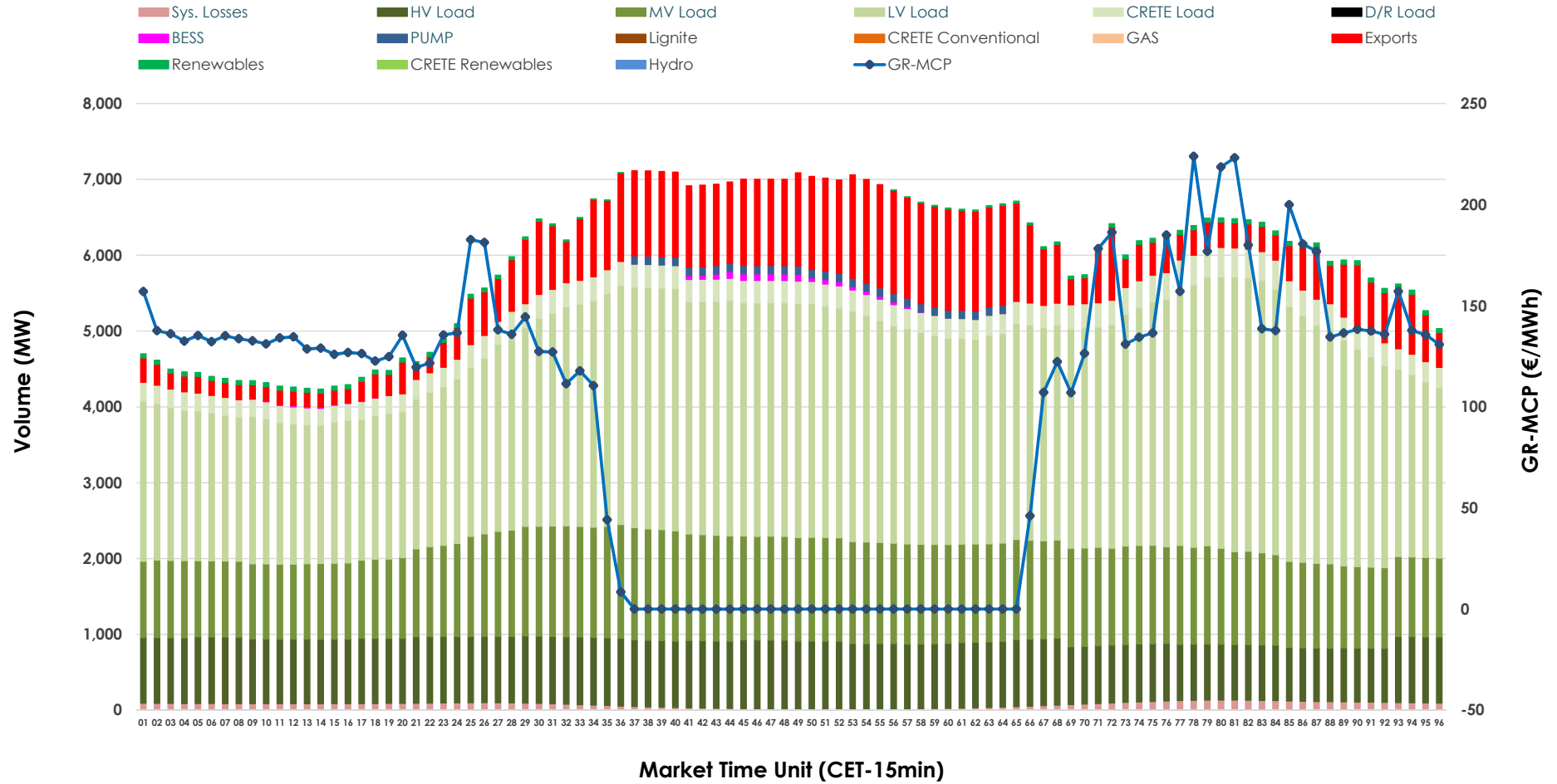


Day-Ahead Market Outlook

29.04.2026 Day-Ahead Market - Sell



29.04.2026 Day-Ahead Market - Buy



GR Bidding Zone Weekly Figures

Delivery Day	23.04	24.04	25.04	26.04	27.04	28.04	29.04
	👇 -23%	👇 -13%	👇 -27%	👇 -12%	👆 64%	👇 -5%	👆 28%
Avg.MCP (€/MWh)	88.12	76.59	55.72	48.85	80.06	75.66	97.01
Max.MCP (€/MWh)	238.11	232.13	186.45	137.70	221.32	195.51	223.89
Min.MCP (€/MWh)	0.00	-19.68	-50.00	-50.00	-2.01	-2.50	-0.01
	👆 8%	👇 -6%	👇 -10%	👇 -10%	👆 20%	👆 2%	👉 0%
Tot.Vol(GWh)	307.65	289.22	259.84	232.86	278.90	285.73	285.20

Trades by Order Type

Delivery Day		23.04	24.04	25.04	26.04	27.04	28.04	29.04	
Ord Price Type		Sell & Buy Trades in (GWh) per Price Type							(%)
PPT	(S)	53.859	58.112	61.249	48.107	58.220	56.503	50.135	35.16%
HBD	(S)	64.423	56.577	41.071	34.796	58.208	56.663	60.517	42.44%
BLK	(S)	27.200	26.900	16.577	15.757	22.261	29.032	31.075	21.79%
CPL	(S)	8.343	3.021	11.024	17.768	0.761	0.665	0.873	0.61%
PPT	(B)	12.529	12.315	12.979	12.240	13.139	12.556	12.132	8.51%
HBD	(B)	138.995	124.015	113.788	102.435	115.820	118.971	121.569	85.25%
BLK	(B)	0.000	0.000	0.000	0.000	0.000	0.000	0.000	0.00%
CPL	(B)	2.301	8.279	3.154	1.752	10.491	11.337	8.899	6.24%
		Sell & Buy Orders Traded per Price Type							(%)
PPT	(S)	1645	1653	1549	1592	1641	1657	1691	34.53%
HBD	(S)	3014	2583	2261	2302	2690	2787	3191	65.16%
BLK	(S)	14	15	8	6	11	13	15	0.31%
PPT	(B)	2217	2275	2245	2258	2307	2293	2311	36.40%
HBD	(B)	4532	4111	4272	3997	3817	4129	4038	63.60%
BLK	(B)	0	0	0	0	0	0	0	0.00%

- MCP** Market Clearing Price (€/MWh)
- PPT** Priority Price-Taking
- HBD** Hybrid
- BLK** Block
- CPL** Market Coupling Flow

Trade's Volume Mix

	Sell - MWh	Buy - MWh	
Lignite (8.9%)	12,701	0	(0.0%)
Crete Conv. (0.0%)	0	0	(0.0%)
Gas (28.4%)	40,452	0	(0.0%)
Hydro (8.3%)	11,895	0	(0.0%)
Imports (2.2%)	3,186		
RES (50.4%)	71,931	817	(0.6%)
Crete RES (1.5%)	2,180	0	(0.0%)
BESS (0.2%)	254	292	(0.2%)
HV Load (0.0%)	0	20,159	(14.1%)
MV Load (0.0%)	0	29,705	(20.8%)
LV Load (0.0%)	0	65,113	(45.7%)
Crete Load (0.0%)	0	6,987	(4.9%)
Pumping (0.0%)	0	770	(0.5%)
Exports		16,945	(11.9%)
Sys.Losses (0.0%)	0	1,812	(1.3%)
D/R Load (0.0%)	0	0	(0.0%)

