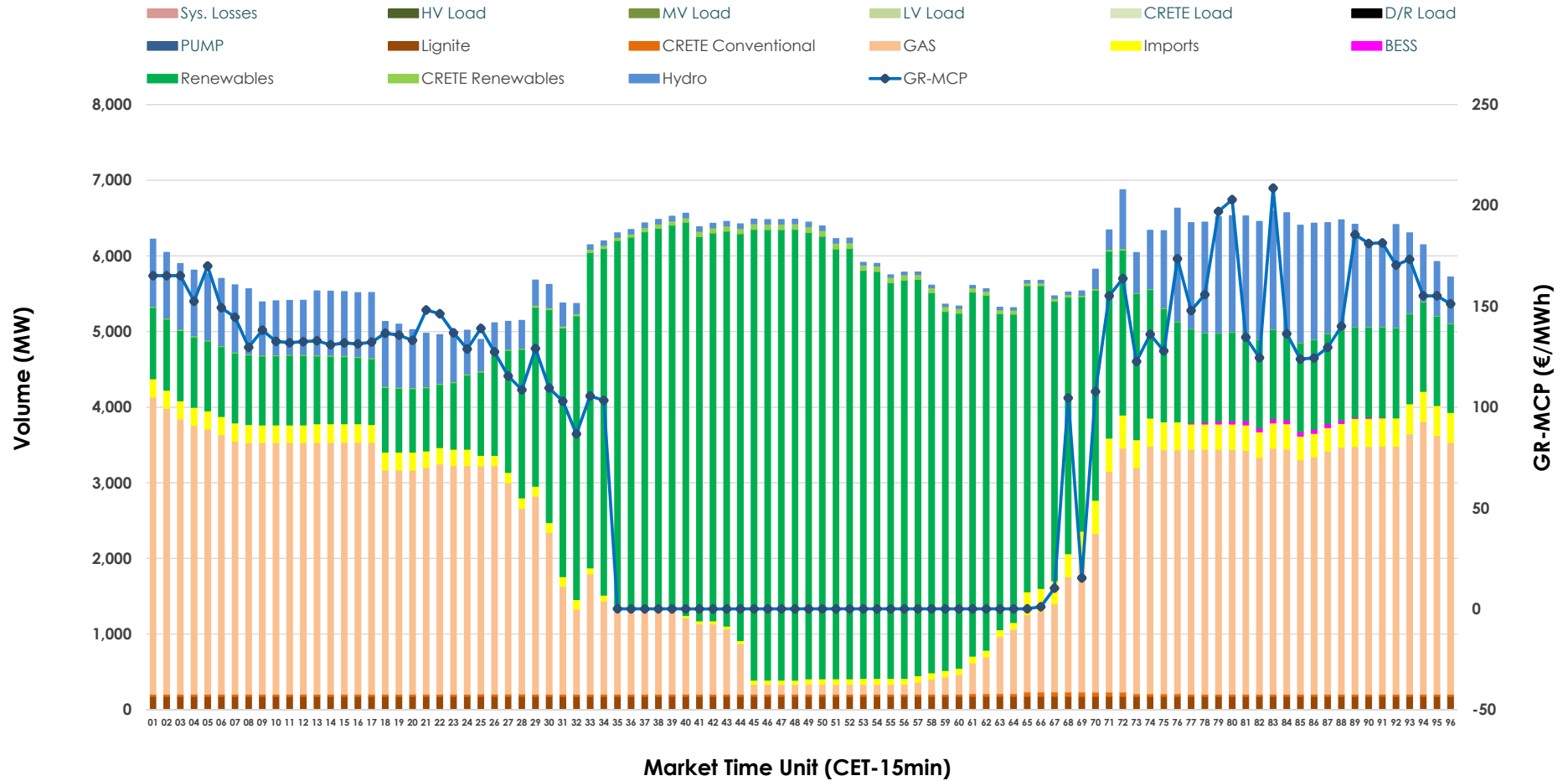


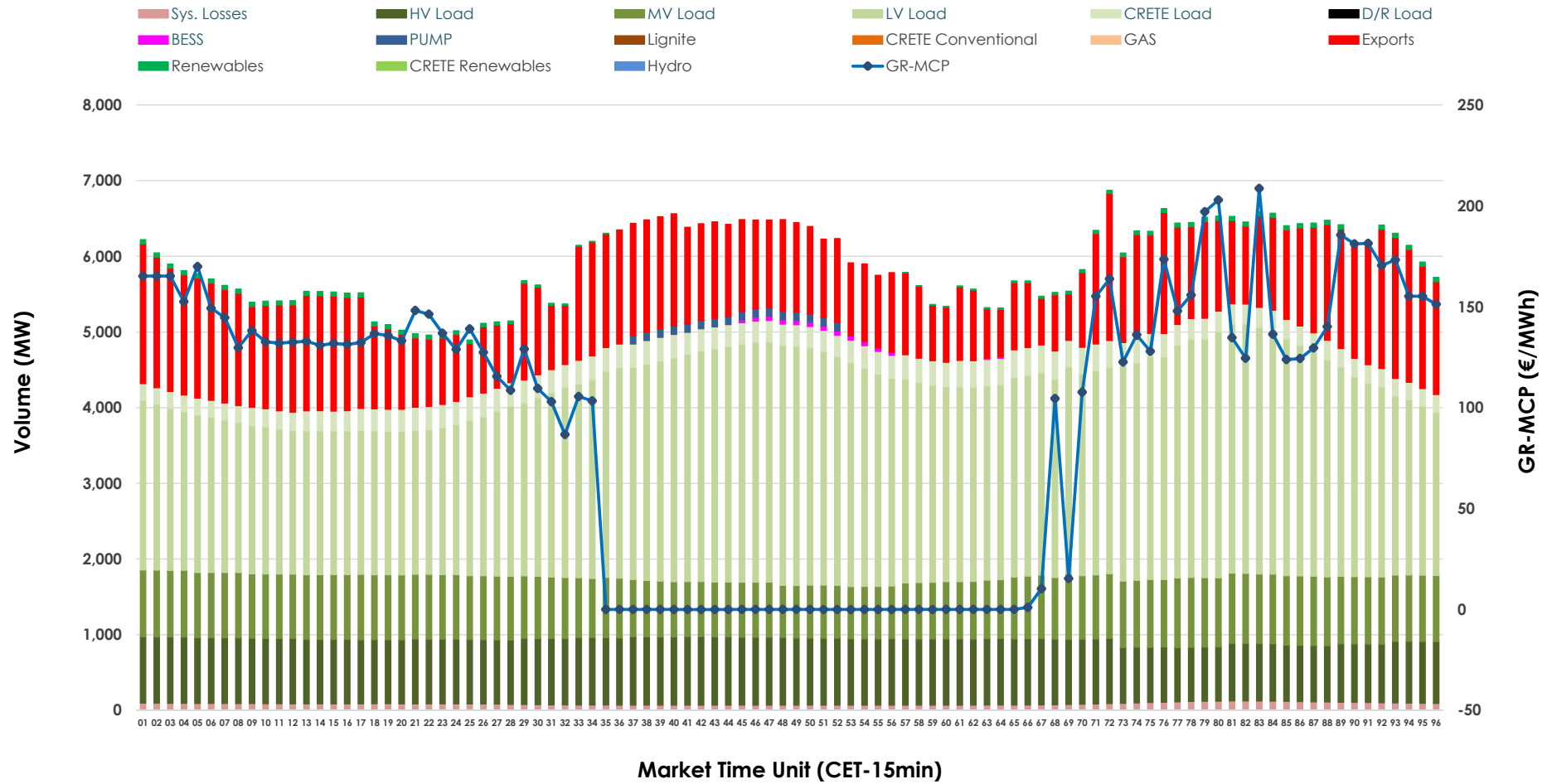


# Day-Ahead Market Outlook

10.05.2026 Day-Ahead Market - Sell



### 10.05.2026 Day-Ahead Market - Buy



### GR Bidding Zone Weekly Figures

Delivery Day	04.05	05.05	06.05	07.05	08.05	09.05	10.05
	↑ 45%	→ 0%	↔ 4%	↗ 17%	↘ 1%	↓ -11%	↓ -16%
<b>Avg.MCP (€/MWh)</b>	98.94	98.73	103.01	120.39	122.10	109.01	91.94
<b>Max.MCP (€/MWh)</b>	263.41	257.05	205.60	176.89	180.08	220.88	208.60
<b>Min.MCP (€/MWh)</b>	-0.10	-0.01	0.00	11.00	54.19	0.00	-0.02
	↗ 4%	↘ -1%	↘ -3%	↗ 1%	↗ 3%	↗ 1%	↘ -9%
<b>Tot.Vol(GWh)</b>	311.19	307.32	296.65	298.95	307.30	311.59	283.97

### Trades by Order Type

Delivery Day		04.05	05.05	06.05	07.05	08.05	09.05	10.05	
<b>Ord Price Type</b>		<b>Sell &amp; Buy Trades in (GWh) per Price Type</b>							<b>(%)</b>
<b>PPT</b>	(S)	59.921	56.144	52.370	54.293	56.340	59.265	60.371	42.52%
<b>HBD</b>	(S)	73.103	67.017	69.505	60.788	61.406	71.643	57.624	40.58%
<b>BLK</b>	(S)	21.897	29.691	25.317	34.136	30.821	24.868	23.989	16.90%
<b>CPL</b>	(S)	0.675	0.807	1.136	0.258	5.083	0.022	0.000	0.00%
<b>PPT</b>	(B)	15.057	14.815	15.325	15.121	15.159	15.045	14.673	10.33%
<b>HBD</b>	(B)	128.647	126.916	124.454	122.238	124.069	119.139	108.171	76.19%
<b>BLK</b>	(B)	0.000	0.000	0.000	0.000	0.000	0.000	0.000	0.00%
<b>CPL</b>	(B)	11.892	11.928	8.547	12.116	14.422	21.613	19.138	13.48%
		<b>Sell &amp; Buy Orders Traded per Price Type</b>							<b>(%)</b>
<b>PPT</b>	(S)	1552	1728	1667	1689	1702	1708	1716	35.46%
<b>HBD</b>	(S)	3146	3211	3430	3600	3461	3499	3114	64.35%
<b>BLK</b>	(S)	13	10	9	13	10	10	9	0.19%
<b>PPT</b>	(B)	2308	2296	2317	2324	2316	2392	2360	39.74%
<b>HBD</b>	(B)	4037	4157	3947	4001	4025	4063	3578	60.26%
<b>BLK</b>	(B)	0	0	0	0	0	0	0	0.00%

- MCP** Market Clearing Price (€/MWh)
- PPT** Priority Price-Taking
- HBD** Hybrid
- BLK** Block
- CPL** Market Coupling Flow

### Trade's Volume Mix

	Sell - MWh	Buy - MWh	
<b>Lignite</b> (3.0%)	4,248	0	(0.0%)
<b>Crete Conv.</b> (0.6%)	792	0	(0.0%)
<b>Gas</b> (36.7%)	52,087	0	(0.0%)
<b>Hydro</b> (9.6%)	13,671	0	(0.0%)
<b>Imports</b> (3.6%)	5,093		
<b>RES</b> (45.9%)	65,192	799	(0.6%)
<b>Crete RES</b> (0.5%)	752	0	(0.0%)
<b>BESS</b> (0.1%)	148	169	(0.1%)
<b>HV Load</b> (0.0%)	0	20,275	(14.3%)
<b>MV Load</b> (0.0%)	0	19,787	(13.9%)
<b>LV Load</b> (0.0%)	0	61,882	(43.6%)
<b>Crete Load</b> (0.0%)	0	6,920	(4.9%)
<b>Pumping</b> (0.0%)	0	440	(0.3%)
<b>Exports</b>		29,631	(20.9%)
<b>Sys.Losses</b> (0.0%)	0	2,080	(1.5%)
<b>D/R Load</b> (0.0%)	0	0	(0.0%)

