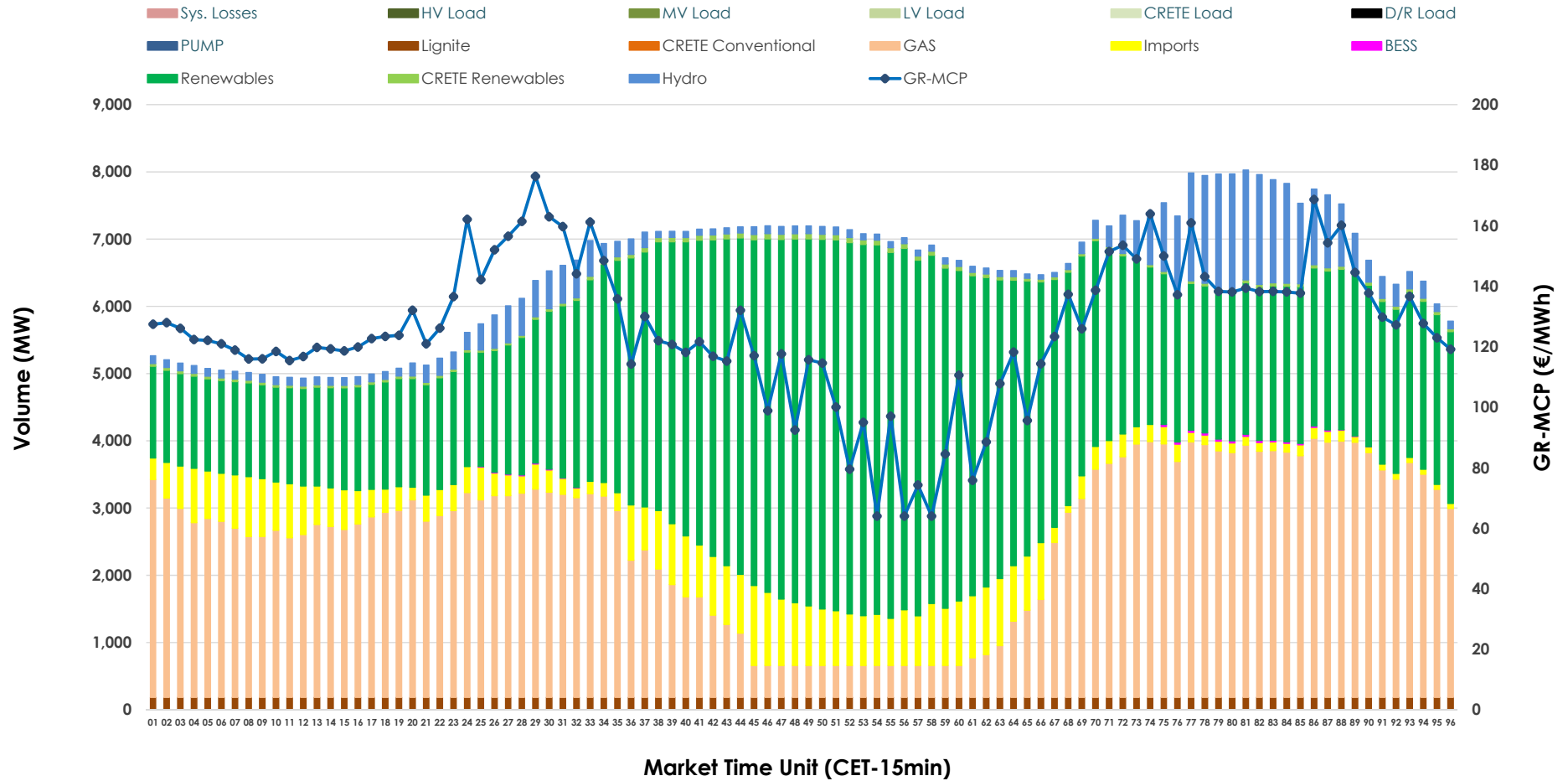


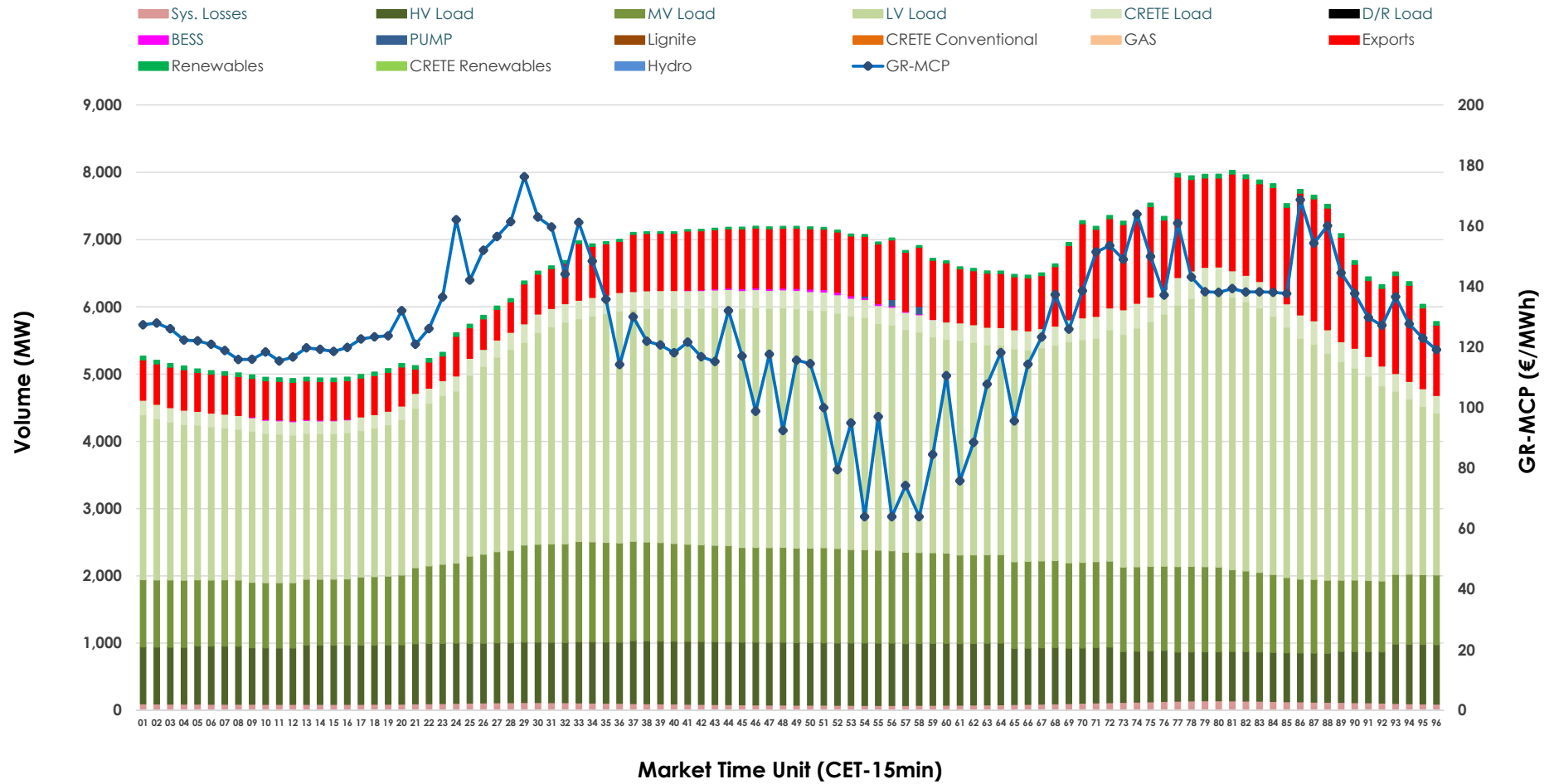


# Day-Ahead Market Outlook

15.04.2026 Day-Ahead Market - Sell



### 15.04.2026 Day-Ahead Market - Buy



### GR Bidding Zone Weekly Figures

Delivery Day	09.04	10.04	11.04	12.04	13.04	14.04	15.04
	↗ 17%	↘ 1%	↘ -8%	↘ -9%	↗ 13%	↗ 47%	↘ -5%
<b>Avg.MCP (€/MWh)</b>	94.31	95.30	87.39	79.79	90.06	132.81	125.87
<b>Max.MCP (€/MWh)</b>	186.55	195.45	187.36	157.05	167.43	245.16	176.29
<b>Min.MCP (€/MWh)</b>	-0.20	-11.00	0.00	-0.41	0.00	15.01	64.00
	➔ 0%	↘ -5%	↘ -16%	↘ -4%	↗ 9%	↗ 17%	↗ 5%
<b>Tot.Vol(GWh)</b>	307.58	293.32	245.55	234.70	254.95	298.65	312.79

### Trades by Order Type

Delivery Day		09.04	10.04	11.04	12.04	13.04	14.04	15.04	
Ord Price Type		Sell & Buy Trades in (GWh) per Price Type							(%)
<b>PPT</b>	(S)	46.078	45.843	36.771	39.180	44.572	44.451	45.887	29.34%
<b>HBD</b>	(S)	66.565	63.588	51.590	49.183	54.680	66.771	65.234	41.71%
<b>BLK</b>	(S)	29.612	27.799	23.858	17.179	21.227	33.965	35.606	22.77%
<b>CPL</b>	(S)	11.536	9.432	10.557	11.806	6.996	4.140	9.669	6.18%
<b>PPT</b>	(B)	14.403	14.353	13.243	12.221	12.074	12.075	12.730	8.14%
<b>HBD</b>	(B)	128.131	117.012	106.422	96.846	104.111	127.172	133.448	85.33%
<b>BLK</b>	(B)	0.000	0.000	0.000	0.000	0.000	0.000	0.000	0.00%
<b>CPL</b>	(B)	11.257	15.297	3.111	8.282	11.289	10.080	10.218	6.53%
		Sell & Buy Orders Traded per Price Type							(%)
<b>PPT</b>	(S)	1484	1489	1463	1465	1461	1495	1488	31.32%
<b>HBD</b>	(S)	3007	2818	2888	2576	2768	3229	3247	68.34%
<b>BLK</b>	(S)	14	13	12	12	13	19	16	0.34%
<b>PPT</b>	(B)	2345	2358	2369	2374	2349	2309	2317	35.93%
<b>HBD</b>	(B)	4014	4151	4083	4193	4291	4088	4131	64.07%
<b>BLK</b>	(B)	0	0	0	0	0	0	0	0.00%

- MCP** Market Clearing Price (€/MWh)
- PPT** Priority Price-Taking
- HBD** Hybrid
- BLK** Block
- CPL** Market Coupling Flow

### Trade's Volume Mix

	Sell - MWh	Buy - MWh	
<b>Lignite</b> (2.8%)	4,392	0	(0.0%)
<b>Crete Conv.</b> (0.0%)	0	0	(0.0%)
<b>Gas</b> (36.7%)	57,326	0	(0.0%)
<b>Hydro</b> (5.8%)	9,073	0	(0.0%)
<b>Imports</b> (7.8%)	12,183		
<b>RES</b> (46.1%)	72,145	1,042	(0.7%)
<b>Crete RES</b> (0.7%)	1,159	0	(0.0%)
<b>BESS</b> (0.1%)	119	139	(0.1%)
<b>HV Load</b> (0.0%)	0	20,640	(13.2%)
<b>MV Load</b> (0.0%)	0	29,637	(19.0%)
<b>LV Load</b> (0.0%)	0	74,212	(47.5%)
<b>Crete Load</b> (0.0%)	0	6,598	(4.2%)
<b>Pumping</b> (0.0%)	0	57	(0.0%)
<b>Exports</b>		21,638	(13.8%)
<b>Sys.Losses</b> (0.0%)	0	2,432	(1.6%)
<b>D/R Load</b> (0.0%)	0	0	(0.0%)

