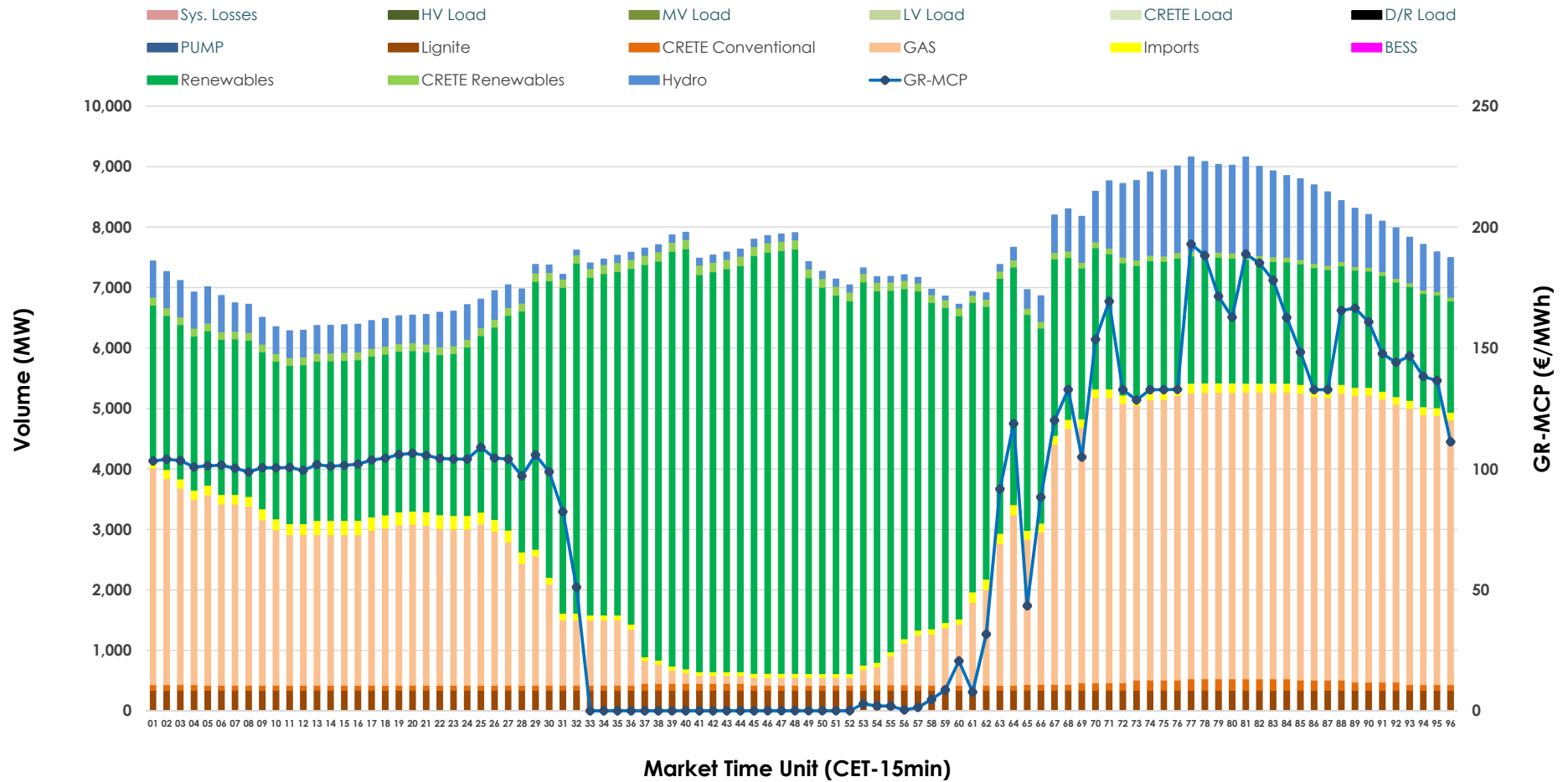


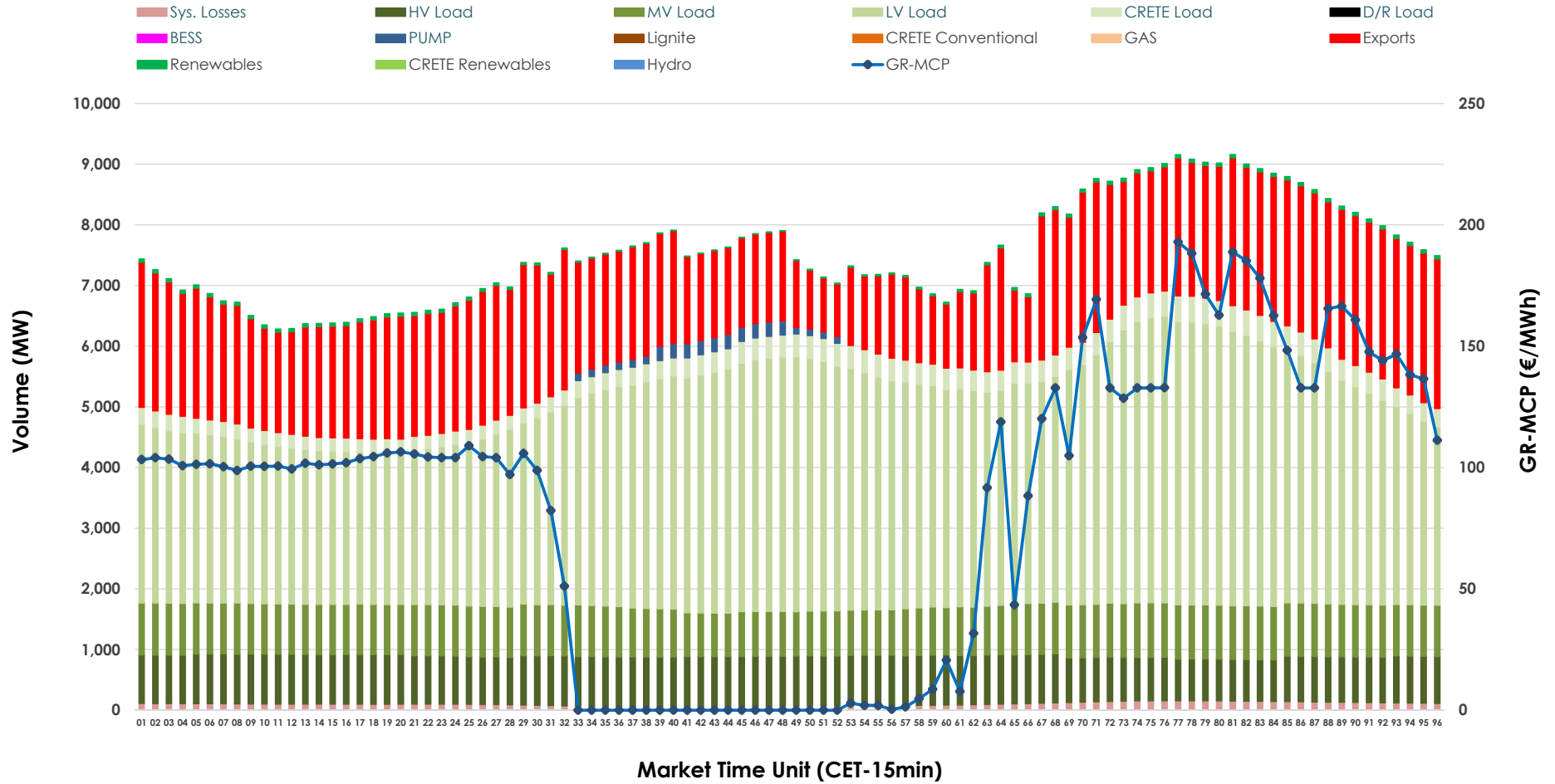


# Day-Ahead Market Outlook

22.03.2026 Day-Ahead Market - Sell



## 22.03.2026 Day-Ahead Market - Buy



### GR Bidding Zone Weekly Figures

Delivery Day	16.03	17.03	18.03	19.03	20.03	21.03	22.03
	↗ 20%	↗ 16%	↘ -22%	↗ 11%	↘ 11%	↘ -14%	↘ -12%
<b>Avg.MCP (€/MWh)</b>	100.39	116.20	90.85	101.23	112.04	96.67	84.78
<b>Max.MCP (€/MWh)</b>	199.21	212.05	167.11	219.70	250.73	176.61	192.93
<b>Min.MCP (€/MWh)</b>	11.01	40.40	3.88	3.34	13.00	0.00	0.00
	↗ 4%	↗ 17%	→ 0%	↘ -2%	↗ 5%	↘ -2%	↘ -9%
<b>Tot.Vol(GWh)</b>	338.55	395.97	395.77	386.01	405.85	396.49	362.14

### Trades by Order Type

Delivery Day		16.03	17.03	18.03	19.03	20.03	21.03	22.03	
<b>Ord Price Type</b>		<b>Sell &amp; Buy Trades in (GWh) per Price Type</b>							<b>(%)</b>
<b>PPT</b>	(S)	71.660	84.654	94.196	93.438	96.577	90.130	82.949	45.81%
<b>HBD</b>	(S)	63.406	76.425	69.505	74.421	78.081	79.261	67.215	37.12%
<b>BLK</b>	(S)	29.721	36.898	28.203	20.366	28.178	28.856	30.904	17.07%
<b>CPL</b>	(S)	4.488	0.007	5.982	4.778	0.092	0.000	0.000	0.00%
<b>PPT</b>	(B)	13.684	14.050	13.302	13.670	13.501	14.027	13.092	7.23%
<b>HBD</b>	(B)	136.429	147.286	150.765	153.841	153.779	145.947	132.444	73.15%
<b>BLK</b>	(B)	0.000	0.000	0.000	0.000	0.000	0.000	0.000	0.00%
<b>CPL</b>	(B)	19.163	36.648	33.819	25.492	35.647	38.273	35.532	19.62%
		<b>Sell &amp; Buy Orders Traded per Price Type</b>							<b>(%)</b>
<b>PPT</b>	(S)	1814	1949	1927	2001	2050	1902	1902	40.15%
<b>HBD</b>	(S)	3131	3142	2970	3003	3049	2881	2817	59.47%
<b>BLK</b>	(S)	10	21	12	8	13	16	18	0.38%
<b>PPT</b>	(B)	2255	2260	2251	2246	2233	2232	2217	34.73%
<b>HBD</b>	(B)	3949	4043	4238	4109	4064	4095	4167	65.27%
<b>BLK</b>	(B)	0	0	0	0	0	0	0	0.00%

- MCP** Market Clearing Price (€/MWh)
- PPT** Priority Price-Taking
- HBD** Hybrid
- BLK** Block
- CPL** Market Coupling Flow

### Trade's Volume Mix

		Sell - MWh	Buy - MWh	
<b>Lignite</b>	(4.5%)	8,160	0	(0.0%)
<b>Crete Conv.</b>	(1.4%)	2,587	0	(0.0%)
<b>Gas</b>	(33.9%)	61,421	0	(0.0%)
<b>Hydro</b>	(7.2%)	12,958	0	(0.0%)
<b>Imports</b>	(1.8%)	3,341		
<b>RES</b>	(49.6%)	89,732	986	(0.5%)
<b>Crete RES</b>	(1.6%)	2,869	0	(0.0%)
<b>BESS</b>	(0.0%)	0	0	(0.0%)
<b>HV Load</b>	(0.0%)	0	18,972	(10.5%)
<b>MV Load</b>	(0.0%)	0	19,844	(11.0%)
<b>LV Load</b>	(0.0%)	0	84,477	(46.7%)
<b>Crete Load</b>	(0.0%)	0	7,645	(4.2%)
<b>Pumping</b>	(0.0%)	0	885	(0.5%)
<b>Exports</b>			45,824	(25.3%)
<b>Sys.Losses</b>	(0.0%)	0	2,436	(1.3%)
<b>D/R Load</b>	(0.0%)	0	0	(0.0%)

