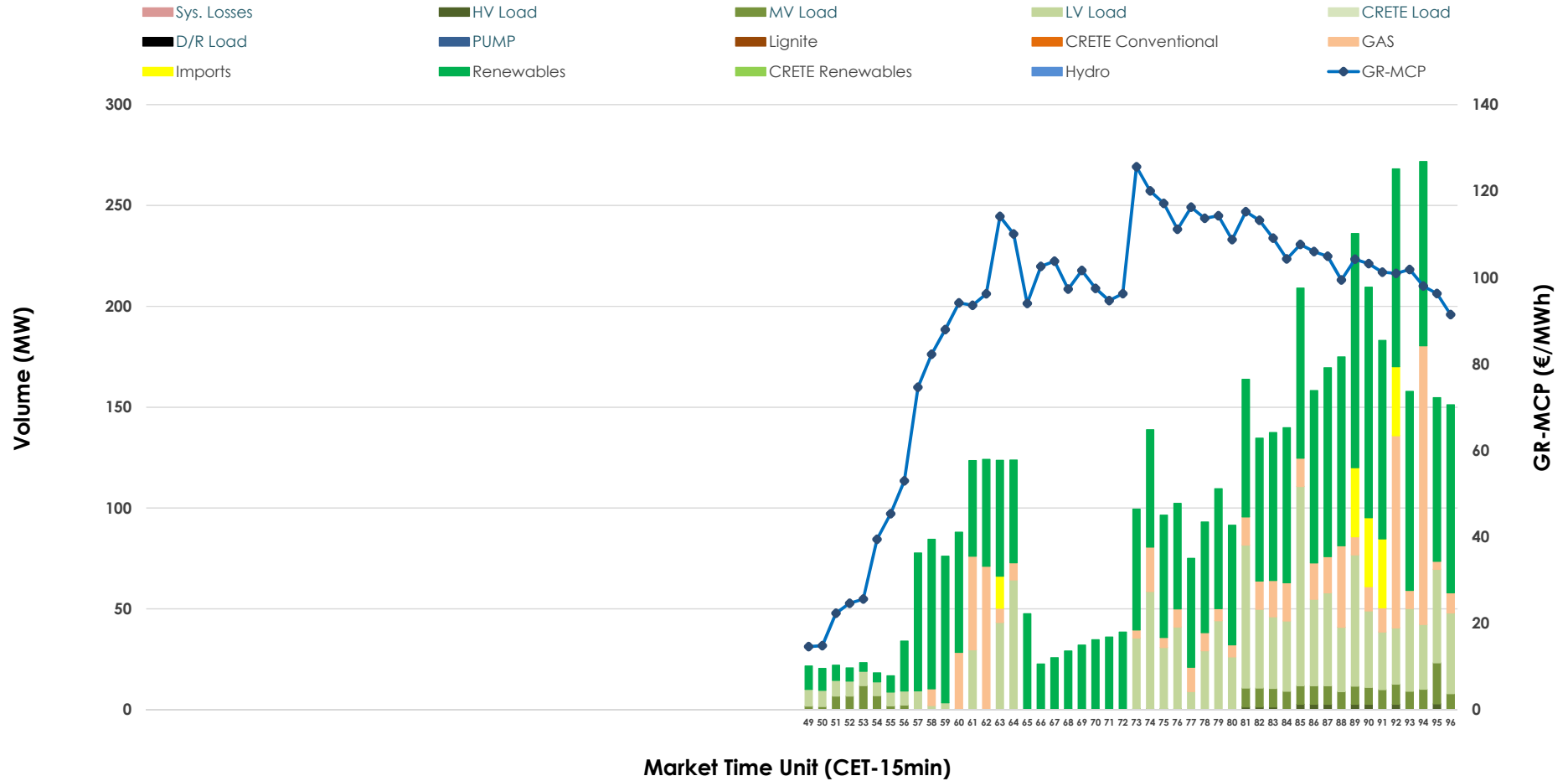


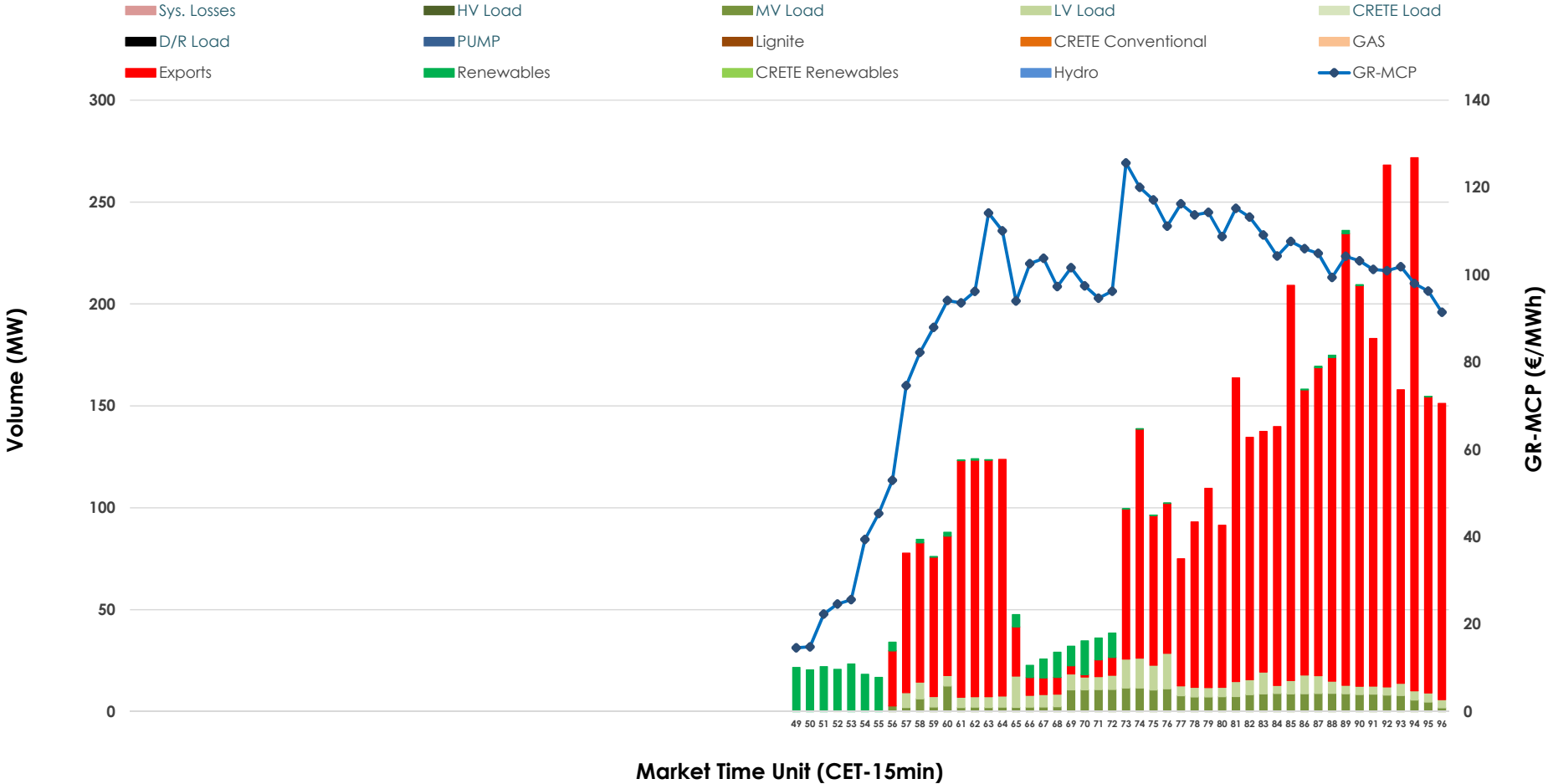


IDA '3' Market Outlook

28.12.2025 IDA '3' Market - Sell



28.12.2025 IDA '3' Market - Buy



GR Bidding Zone Weekly Figures

Delivery Day	22.12	23.12	24.12	25.12	26.12	27.12	28.12
	↗ 13%	→ 0%	↘ -31%	↗ 8%	↘ 4%	↘ -10%	↘ -6%
Avg.MCP (€/MWh)	139.19	139.29	95.98	103.44	107.76	97.17	90.92
Max.MCP (€/MWh)	208.31	224.24	162.40	120.06	124.35	137.20	125.61
Min.MCP (€/MWh)	76.26	57.54	51.36	84.94	86.95	25.00	14.61
	↘ -56%	↘ -18%	↗ 127%	↗ 18%	↗ 44%	↘ -56%	↗ 48%
Tot.Vol(GWh)	1.20	0.98	2.24	2.64	3.81	1.68	2.50

Trades by Order Type

Delivery Day		22.12	23.12	24.12	25.12	26.12	27.12	28.12	
Ord Price Type		Sell & Buy Trades in (GWh) per Price Type							(%)
PPT	(S)	0.000	0.000	0.000	0.000	0.000	0.000	0.000	0.00%
HBD	(S)	0.386	0.426	1.058	1.121	1.364	0.658	1.209	96.94%
BLK	(S)	0.000	0.000	0.000	0.000	0.000	0.000	0.000	0.00%
CPL	(S)	0.212	0.066	0.061	0.201	0.541	0.182	0.038	3.06%
PPT	(B)	0.000	0.000	0.000	0.000	0.000	0.000	0.000	0.00%
HBD	(B)	0.567	0.300	0.294	0.421	0.353	0.596	0.201	16.09%
BLK	(B)	0.000	0.000	0.000	0.000	0.000	0.000	0.000	0.00%
CPL	(B)	0.032	0.192	0.825	0.902	1.552	0.245	1.047	83.91%
		Sell & Buy Orders Traded per Price Type							(%)
PPT	(S)	0	0	0	0	0	0	0	0.00%
HBD	(S)	103	54	215	211	246	268	218	100.00%
BLK	(S)	0	0	0	0	0	0	0	0.00%
PPT	(B)	0	0	0	0	0	0	0	0.00%
HBD	(B)	220	240	120	132	84	150	143	100.00%
BLK	(B)	0	0	0	0	0	0	0	0.00%

- MCP** Market Clearing Price (€/MWh)
- PPT** Priority Price-Taking
- HBD** Hybrid
- BLK** Block
- CPL** Market Coupling Flow

Trade's Volume Mix

		Sell - MWh	Buy - MWh	
Lignite	(0.0%)	0	0	(0.0%)
Crete Conv.	(0.0%)	0	0	(0.0%)
Gas	(13.8%)	172	0	(0.0%)
Hydro	(0.0%)	0	0	(0.0%)
Imports	(3.1%)	38		
RES	(54.5%)	680	60	(4.8%)
Crete RES	(0.0%)	0	0	(0.0%)
HV Load	(0.5%)	6	0	(0.0%)
MV Load	(4.0%)	50	71	(5.7%)
LV Load	(24.2%)	301	70	(5.6%)
Crete Load	(0.0%)	0	0	(0.0%)
Pumping	(0.0%)	0	0	(0.0%)
Exports			1,047	(83.9%)
Sys.Losses	(0.0%)	0	0	(0.0%)
D/R Load	(0.0%)	0	0	(0.0%)

