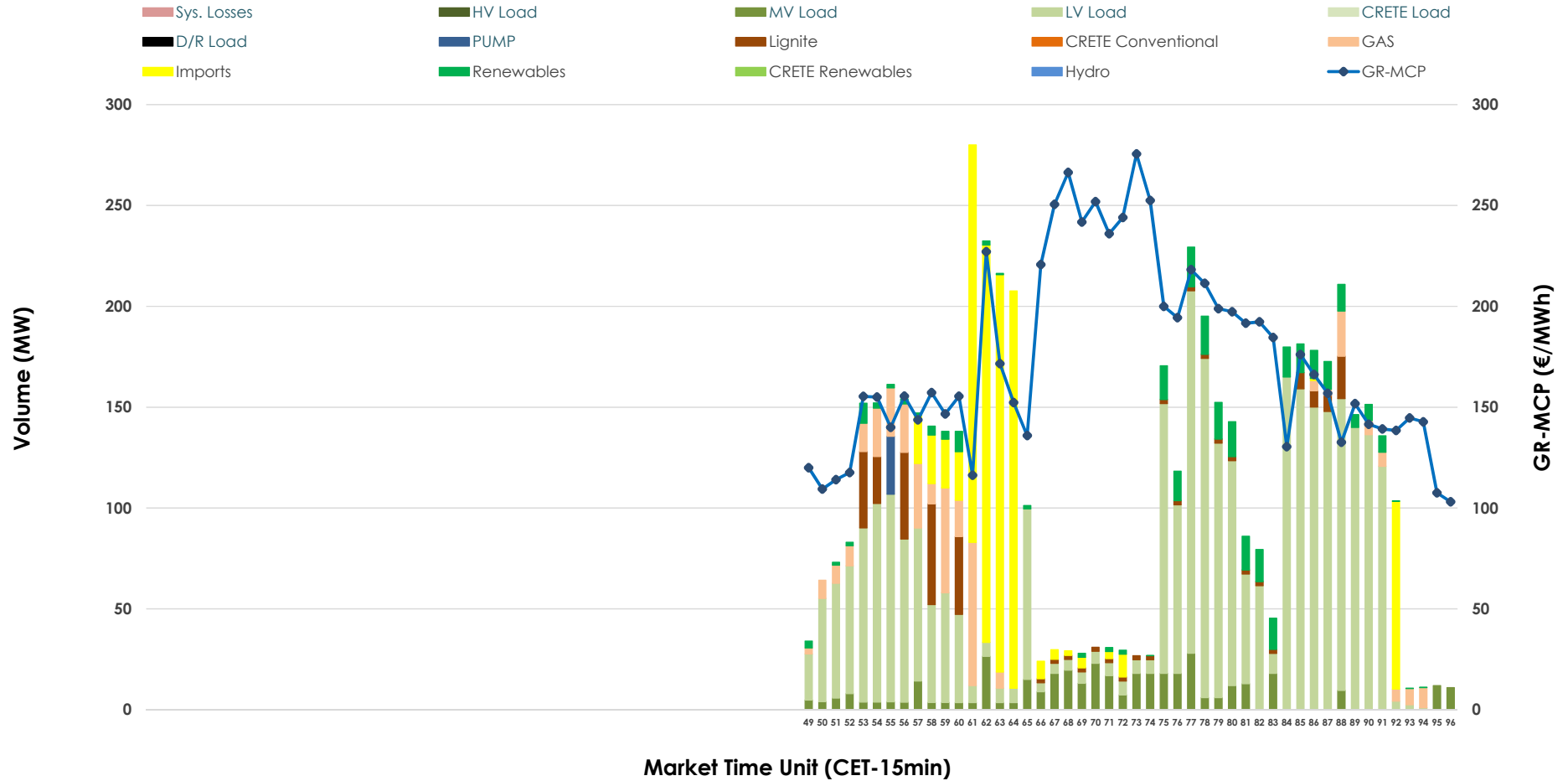


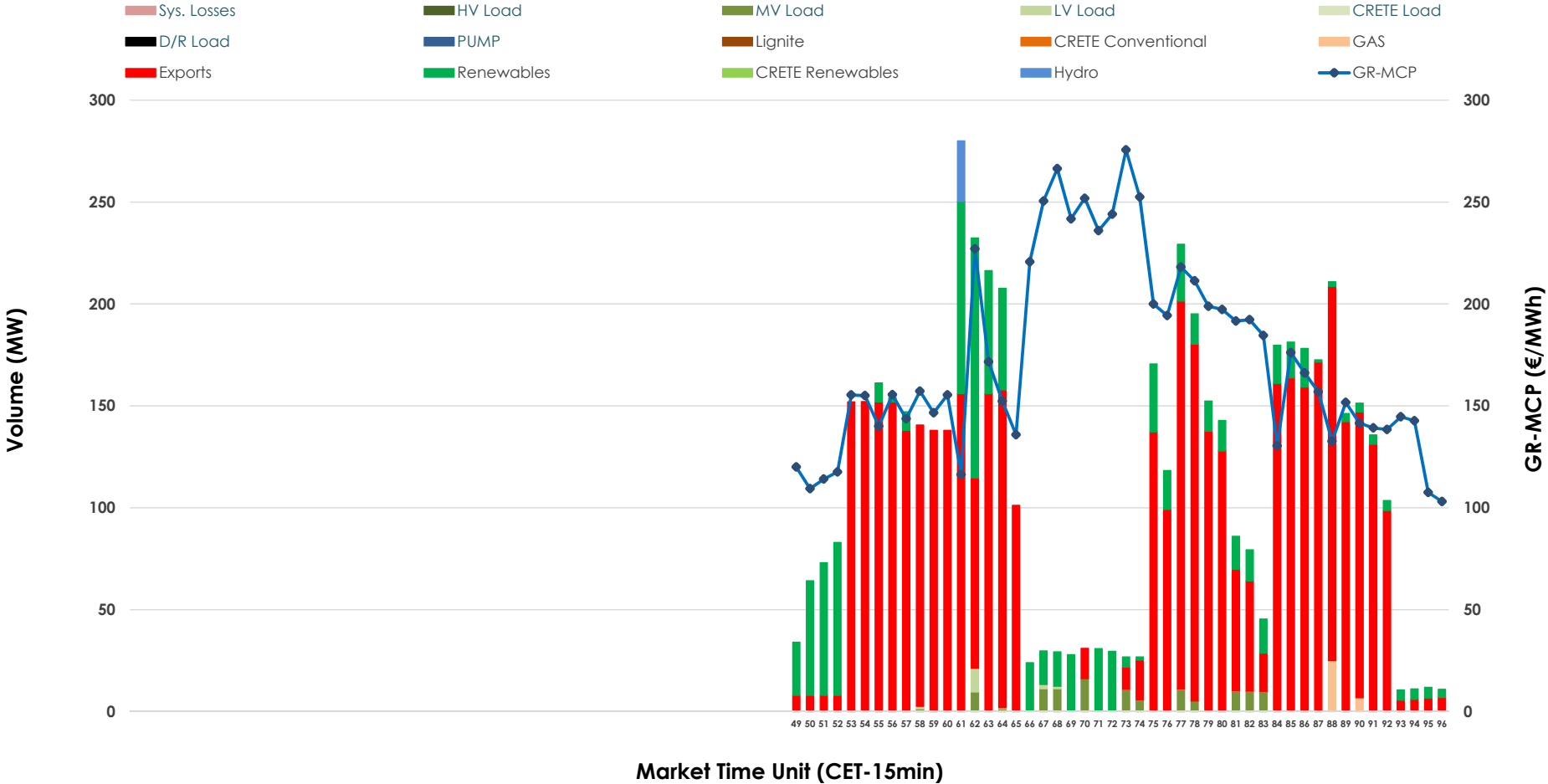


IDA '3' Market Outlook

23.01.2026 IDA '3' Market - Sell



23.01.2026 IDA '3' Market - Buy



GR Bidding Zone Weekly Figures

Delivery Day	17.01	18.01	19.01	20.01	21.01	22.01	23.01
	👇 -29%	👆 4%	👆 6%	👆 14%	👆 46%	👆 50%	👇 -37%
Avg.MCP (€/MWh)	99.83	103.62	110.20	125.64	183.28	275.40	173.58
Max.MCP (€/MWh)	145.94	153.01	170.45	214.20	253.03	445.00	275.57
Min.MCP (€/MWh)	78.38	76.30	77.71	41.02	128.93	117.20	103.10
	👆 27%	👆 34%	👇 -53%	👆 93%	👆 4%	👆 12%	👆 14%
Tot.Vol(GWh)	1.69	2.26	1.06	2.05	2.14	2.39	2.73

Trades by Order Type

Delivery Day		17.01	18.01	19.01	20.01	21.01	22.01	23.01	
Ord Price Type		Sell & Buy Trades in (GWh) per Price Type							(%)
PPT	(S)	0.000	0.000	0.000	0.000	0.000	0.000	0.000	0.00%
HBD	(S)	0.828	0.964	0.325	1.017	0.126	1.029	1.110	81.41%
BLK	(S)	0.000	0.000	0.000	0.000	0.000	0.000	0.000	0.00%
CPL	(S)	0.016	0.164	0.207	0.009	0.943	0.166	0.254	18.59%
PPT	(B)	0.000	0.000	0.000	0.000	0.000	0.000	0.000	0.00%
HBD	(B)	0.844	1.073	0.532	0.468	0.893	0.616	0.295	21.61%
BLK	(B)	0.000	0.000	0.000	0.000	0.000	0.000	0.000	0.00%
CPL	(B)	0.000	0.056	0.000	0.558	0.176	0.578	1.069	78.39%
		Sell & Buy Orders Traded per Price Type							(%)
PPT	(S)	0	0	0	0	0	0	0	0.00%
HBD	(S)	198	158	126	241	115	222	233	100.00%
BLK	(S)	0	0	0	0	0	0	0	0.00%
PPT	(B)	0	0	0	0	0	0	0	0.00%
HBD	(B)	289	271	214	113	252	141	139	100.00%
BLK	(B)	0	0	0	0	0	0	0	0.00%

- MCP** Market Clearing Price (€/MWh)
- PPT** Priority Price-Taking
- HBD** Hybrid
- BLK** Block
- CPL** Market Coupling Flow

Trade's Volume Mix

		Sell - MWh		Buy - MWh	
Lignite	(5.0%)	68	0		(0.0%)
Crete Conv.	(0.0%)	0	0		(0.0%)
Gas	(6.9%)	94	8		(0.6%)
Hydro	(0.0%)	0	7		(0.5%)
Imports	(18.6%)	254			
RES	(5.5%)	75	246		(18.1%)
Crete RES	(0.0%)	0	0		(0.0%)
HV Load	(0.0%)	0	0		(0.0%)
MV Load	(7.5%)	102	28		(2.1%)
LV Load	(56.0%)	764	4		(0.3%)
Crete Load	(0.0%)	0	0		(0.0%)
Pumping	(0.5%)	7	0		(0.0%)
Exports				1,069	(78.4%)
Sys.Losses	(0.0%)	0	0		(0.0%)
D/R Load	(0.0%)	0	0		(0.0%)

