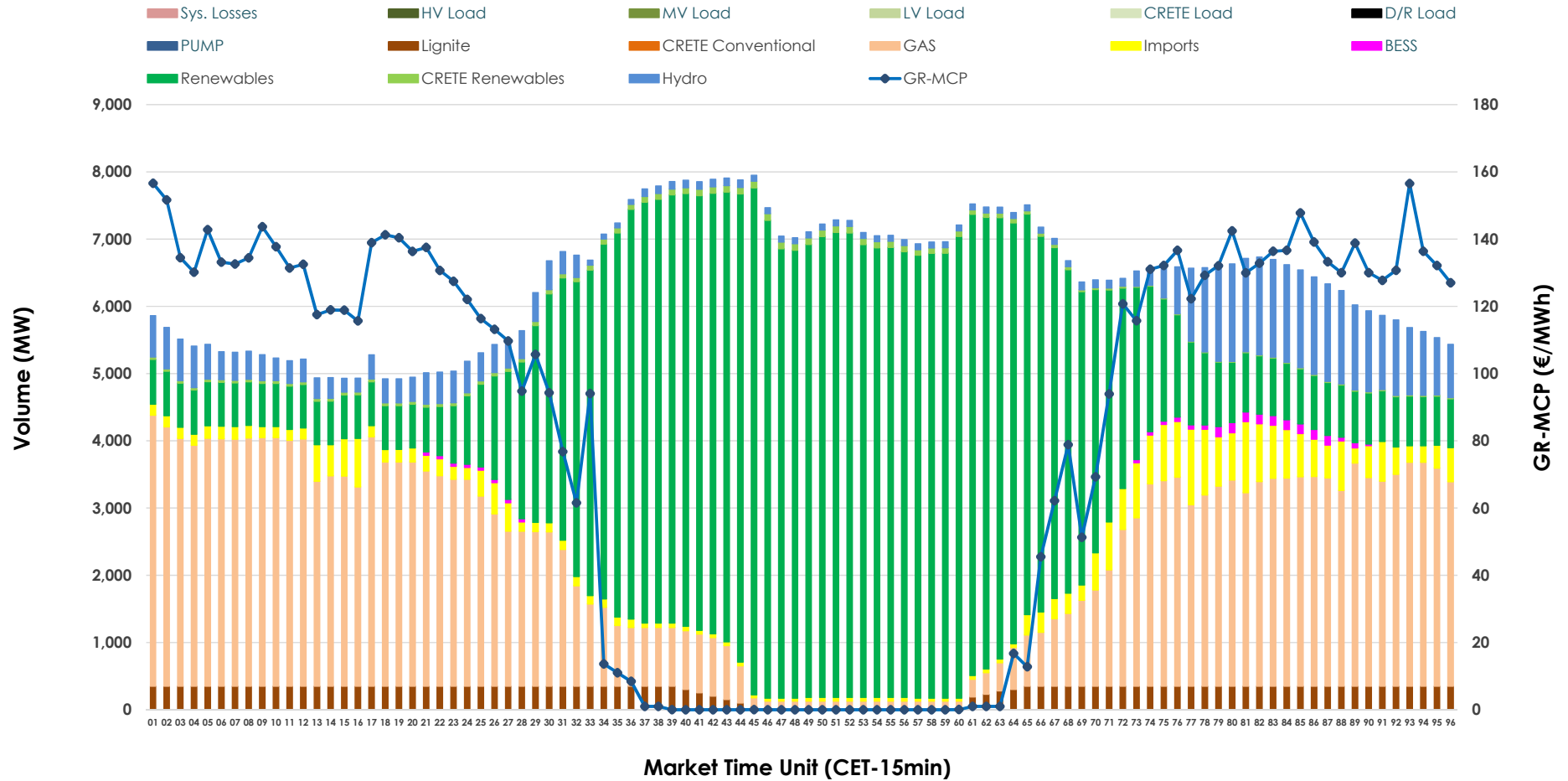


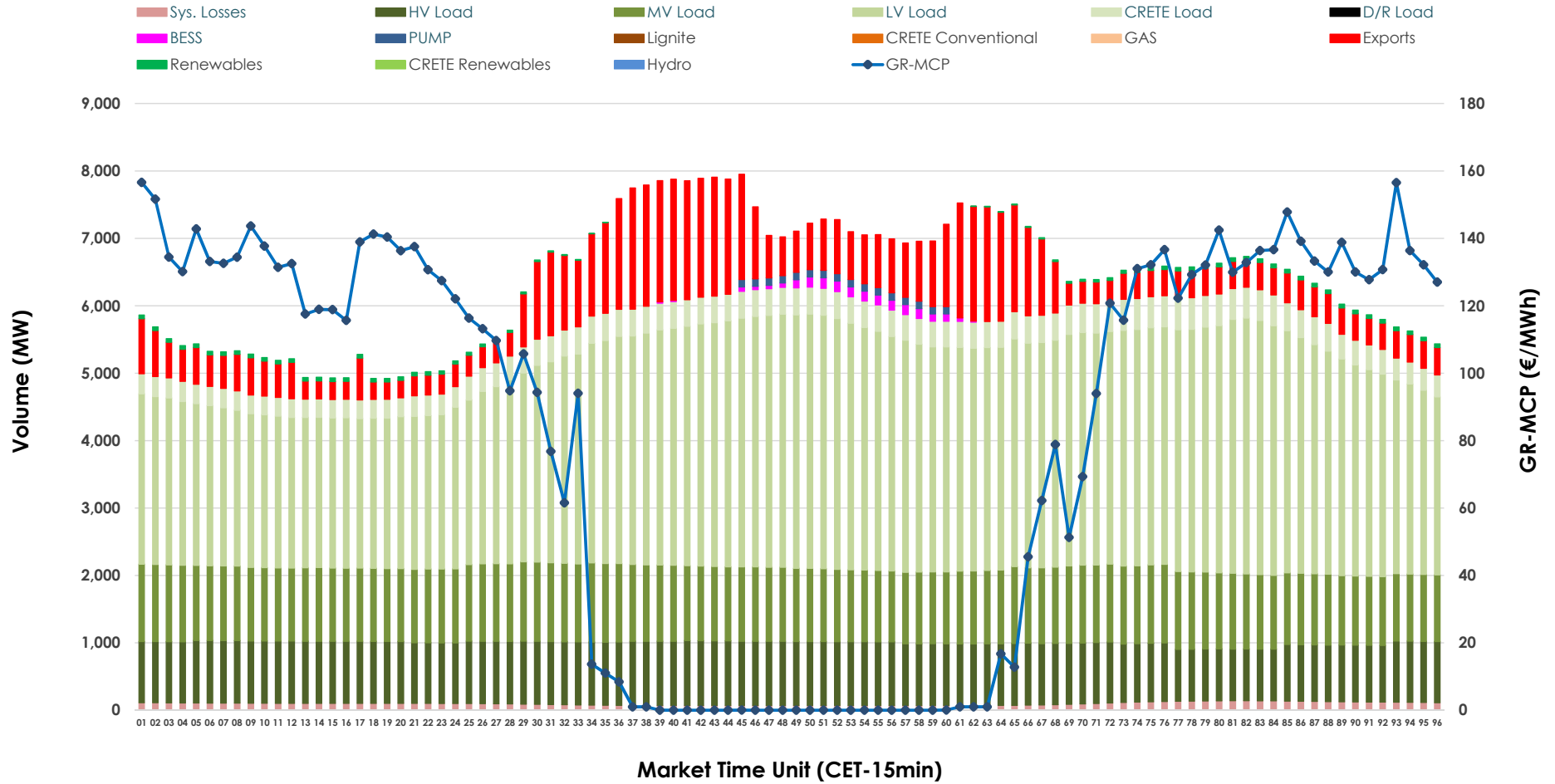


Day-Ahead Market Outlook

06.06.2026 Day-Ahead Market - Sell



06.06.2026 Day-Ahead Market - Buy



GR Bidding Zone Weekly Figures

Delivery Day	31.05	01.06	02.06	03.06	04.06	05.06	06.06
	↓ -6%	↑ 11%	→ -1%	↓ -11%	↑ 6%	↑ 26%	↓ -29%
Avg.MCP (€/MWh)	87.36	97.12	96.31	85.72	91.05	114.69	81.97
Max.MCP (€/MWh)	166.99	185.00	171.60	150.00	210.77	182.76	156.59
Min.MCP (€/MWh)	-0.01	0.00	0.00	0.00	5.44	18.59	0.00
	↓ -3%	↑ 11%	↑ 5%	↑ 3%	↓ -11%	↓ -2%	↓ -4%
Tot.Vol(GWh)	306.63	339.56	357.43	367.73	327.39	321.16	306.90

Trades by Order Type

Delivery Day		31.05	01.06	02.06	03.06	04.06	05.06	06.06	
Ord Price Type		Sell & Buy Trades in (GWh) per Price Type							(%)
PPT	(S)	63.025	62.576	64.590	68.089	64.441	58.338	56.563	36.86%
HBD	(S)	62.234	76.261	80.307	78.424	66.852	70.853	63.063	41.10%
BLK	(S)	28.056	30.945	33.821	37.350	29.365	28.875	30.143	19.64%
CPL	(S)	0.000	0.000	0.000	0.000	3.038	2.516	3.683	2.40%
PPT	(B)	13.900	15.188	15.274	15.118	16.151	15.503	15.317	9.98%
HBD	(B)	115.985	128.365	135.591	142.718	141.396	136.467	128.886	83.99%
BLK	(B)	0.000	0.000	0.000	0.000	0.000	0.000	0.000	0.00%
CPL	(B)	23.430	26.229	27.852	26.028	6.148	8.612	9.249	6.03%
		Sell & Buy Orders Traded per Price Type							(%)
PPT	(S)	1814	1750	1754	1740	1703	1718	1725	33.21%
HBD	(S)	3170	3394	3467	3314	3595	3574	3457	66.54%
BLK	(S)	15	15	15	17	13	11	13	0.25%
PPT	(B)	2301	2384	2392	2388	2413	2359	2329	37.39%
HBD	(B)	3669	3831	3932	3986	4066	3898	3900	62.61%
BLK	(B)	0	0	0	0	0	0	0	0.00%

- MCP** Market Clearing Price (€/MWh)
- PPT** Priority Price-Taking
- HBD** Hybrid
- BLK** Block
- CPL** Market Coupling Flow

Trade's Volume Mix

	Sell - MWh	Buy - MWh	
Lignite (4.4%)	6,727	0	(0.0%)
Crete Conv. (0.0%)	0	0	(0.0%)
Gas (32.5%)	49,821	0	(0.0%)
Hydro (7.1%)	10,875	0	(0.0%)
Imports (4.7%)	7,214		
RES (50.2%)	77,047	752	(0.5%)
Crete RES (0.8%)	1,216	0	(0.0%)
BESS (0.4%)	551	501	(0.3%)
HV Load (0.0%)	0	21,695	(14.1%)
MV Load (0.0%)	0	26,501	(17.3%)
LV Load (0.0%)	0	74,444	(48.5%)
Crete Load (0.0%)	0	8,941	(5.8%)
Pumping (0.0%)	0	440	(0.3%)
Exports		17,854	(11.6%)
Sys.Losses (0.0%)	0	2,324	(1.5%)
D/R Load (0.0%)	0	0	(0.0%)

