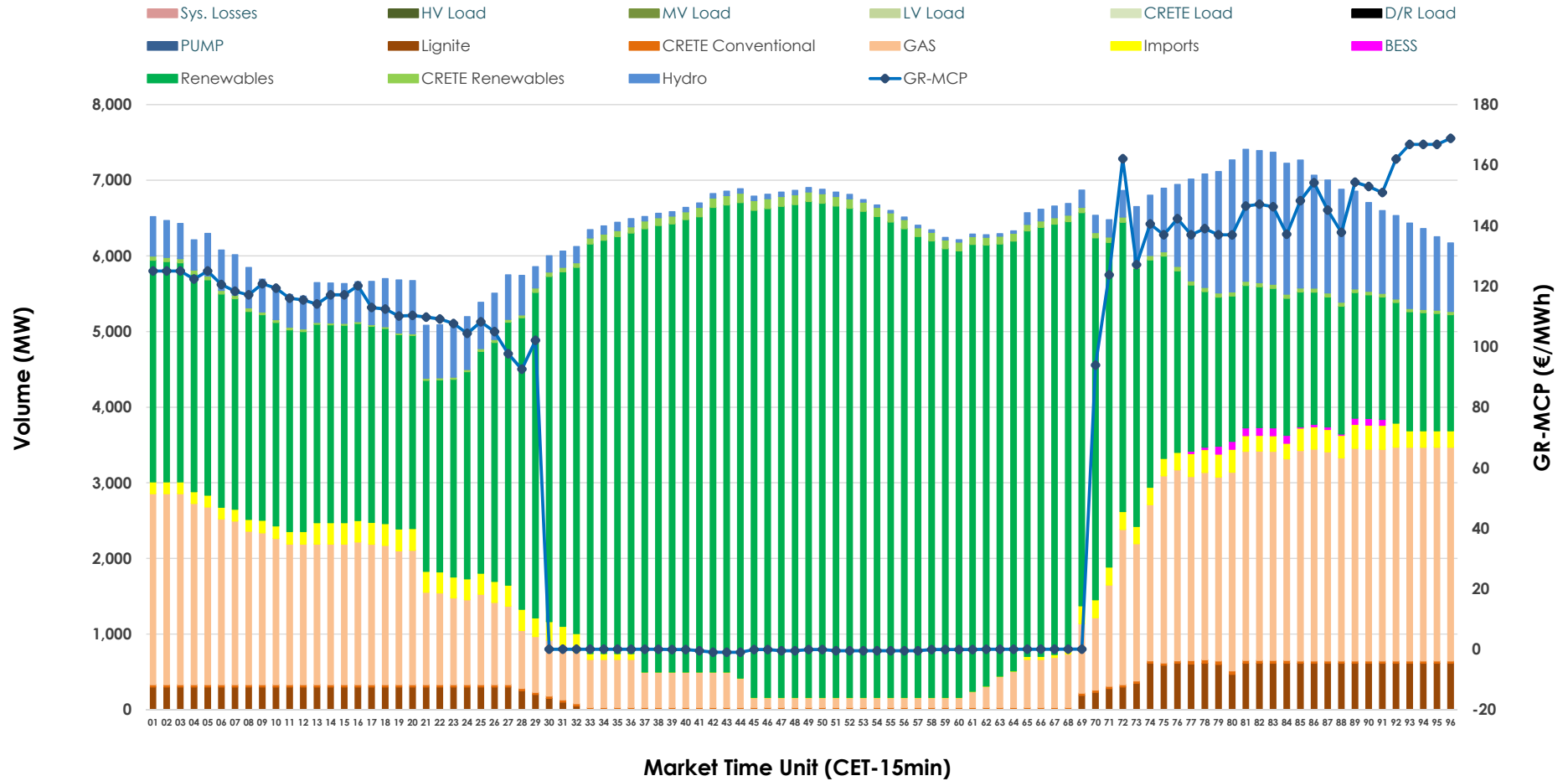


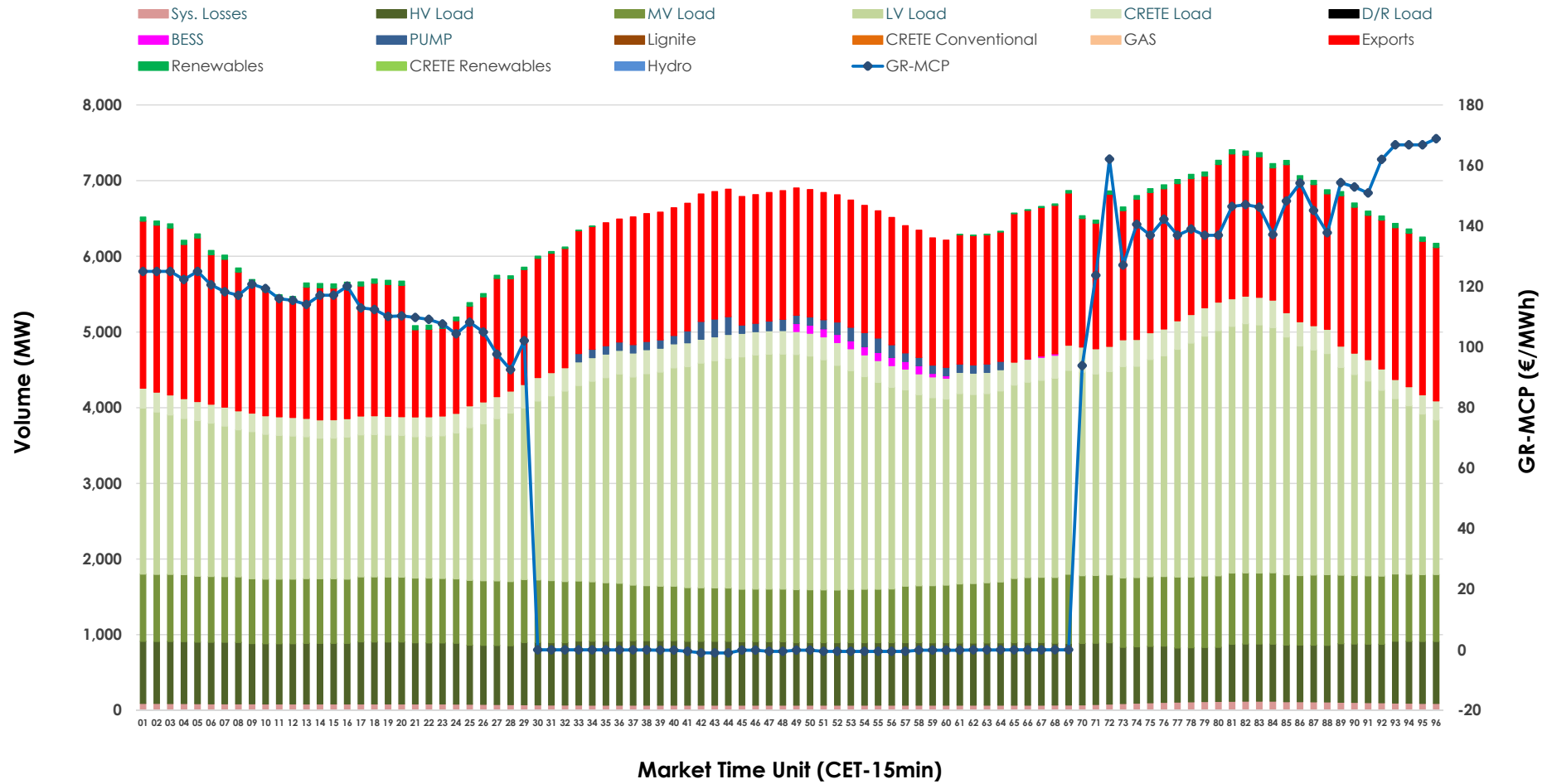


# Day-Ahead Market Outlook

17.05.2026 Day-Ahead Market - Sell



### 17.05.2026 Day-Ahead Market - Buy



### GR Bidding Zone Weekly Figures

Delivery Day	11.05	12.05	13.05	14.05	15.05	16.05	17.05
	↗ 6%	↘ -19%	↗ 20%	↘ -1%	↘ -3%	↘ -15%	↘ -4%
<b>Avg.MCP (€/MWh)</b>	97.12	78.99	95.00	94.38	91.65	78.36	75.21
<b>Max.MCP (€/MWh)</b>	191.00	196.70	187.34	236.73	170.33	136.89	168.83
<b>Min.MCP (€/MWh)</b>	0.00	-0.10	0.00	0.00	0.00	0.02	-1.01
	↗ 12%	↗ 7%	↘ -2%	↗ 2%	↘ -2%	↘ -10%	↗ 1%
<b>Tot.Vol(GWh)</b>	317.58	340.95	335.77	342.44	335.47	303.35	306.87

### Trades by Order Type

Delivery Day		11.05	12.05	13.05	14.05	15.05	16.05	17.05	
<b>Ord Price Type</b>		Sell & Buy Trades in (GWh) per Price Type							(%)
<b>PPT</b>	(S)	67.164	77.219	70.214	71.021	68.237	63.469	71.721	46.74%
<b>HBD</b>	(S)	69.769	74.127	78.723	72.208	72.381	66.338	64.208	41.85%
<b>BLK</b>	(S)	21.856	19.129	18.946	27.992	27.116	21.857	17.507	11.41%
<b>CPL</b>	(S)	0.000	0.000	0.000	0.000	0.000	0.013	0.000	0.00%
<b>PPT</b>	(B)	14.748	15.151	15.355	15.696	16.044	14.299	13.770	8.97%
<b>HBD</b>	(B)	122.215	129.213	128.880	127.499	125.379	121.066	111.681	72.79%
<b>BLK</b>	(B)	0.000	0.000	0.000	0.000	0.000	0.000	0.000	0.00%
<b>CPL</b>	(B)	21.826	26.110	23.648	28.027	26.310	16.311	27.985	18.24%
		Sell & Buy Orders Traded per Price Type							(%)
<b>PPT</b>	(S)	1762	1764	1686	1757	1720	1725	1722	37.41%
<b>HBD</b>	(S)	3213	2989	3378	3419	3324	3475	2870	62.35%
<b>BLK</b>	(S)	6	6	8	9	8	8	11	0.24%
<b>PPT</b>	(B)	2322	2327	2367	2353	2357	2402	2387	37.86%
<b>HBD</b>	(B)	3881	4077	4041	4071	4036	3969	3918	62.14%
<b>BLK</b>	(B)	0	0	0	0	0	0	0	0.00%

- MCP** Market Clearing Price (€/MWh)
- PPT** Priority Price-Taking
- HBD** Hybrid
- BLK** Block
- CPL** Market Coupling Flow

### Trade's Volume Mix

		Sell - MWh	Buy - MWh	
<b>Lignite</b>	(3.9%)	6,056	0	(0.0%)
<b>Crete Conv.</b>	(0.5%)	744	0	(0.0%)
<b>Gas</b>	(21.8%)	33,403	0	(0.0%)
<b>Hydro</b>	(8.4%)	12,844	0	(0.0%)
<b>Imports</b>	(2.5%)	3,814		
<b>RES</b>	(61.7%)	94,633	759	(0.5%)
<b>Crete RES</b>	(1.1%)	1,683	0	(0.0%)
<b>BESS</b>	(0.2%)	258	295	(0.2%)
<b>HV Load</b>	(0.0%)	0	19,320	(12.6%)
<b>MV Load</b>	(0.0%)	0	19,990	(13.0%)
<b>LV Load</b>	(0.0%)	0	60,915	(39.7%)
<b>Crete Load</b>	(0.0%)	0	7,093	(4.6%)
<b>Pumping</b>	(0.0%)	0	1,089	(0.7%)
<b>Exports</b>			41,945	(27.3%)
<b>Sys.Losses</b>	(0.0%)	0	2,031	(1.3%)
<b>D/R Load</b>	(0.0%)	0	0	(0.0%)

