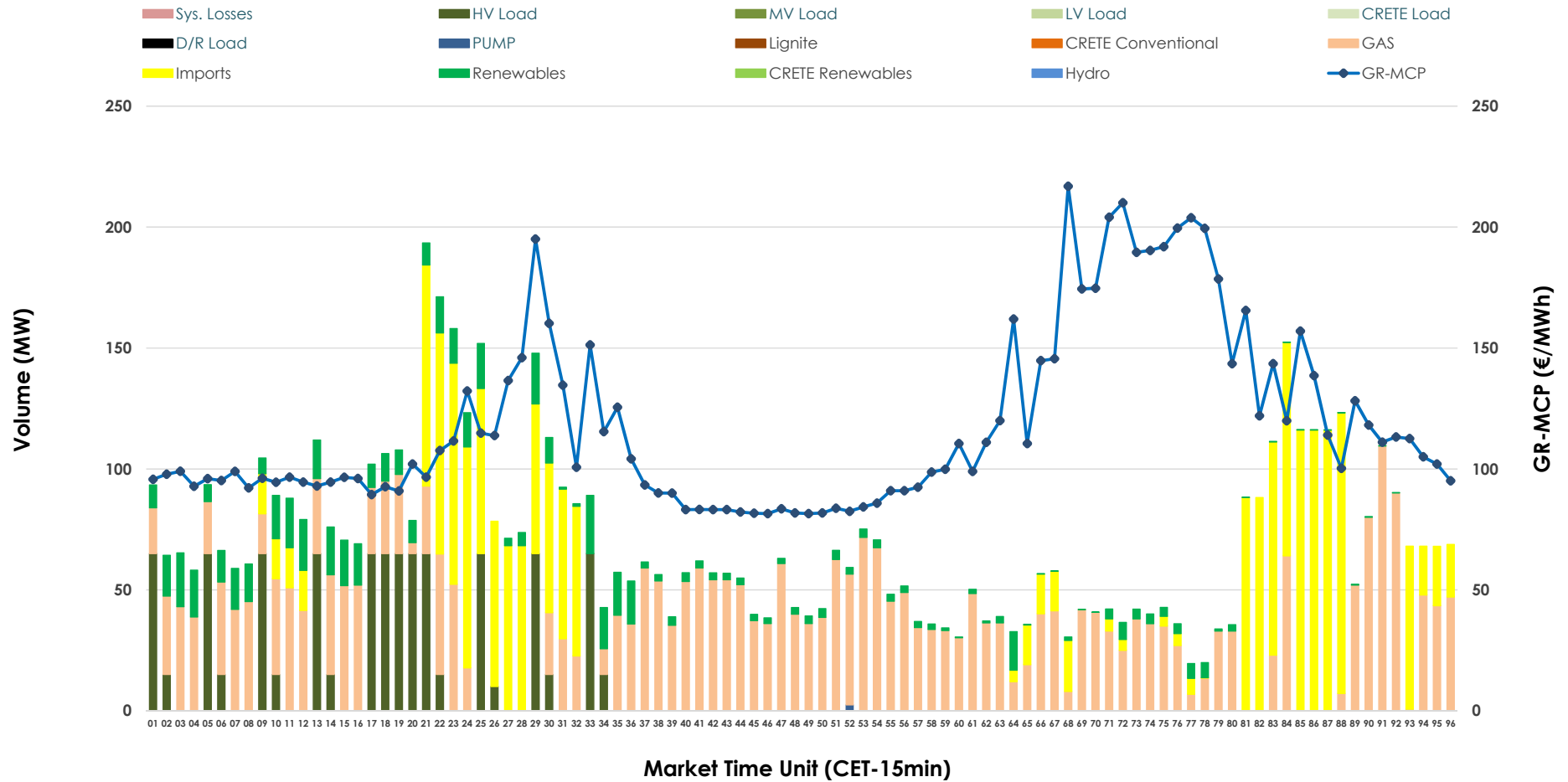


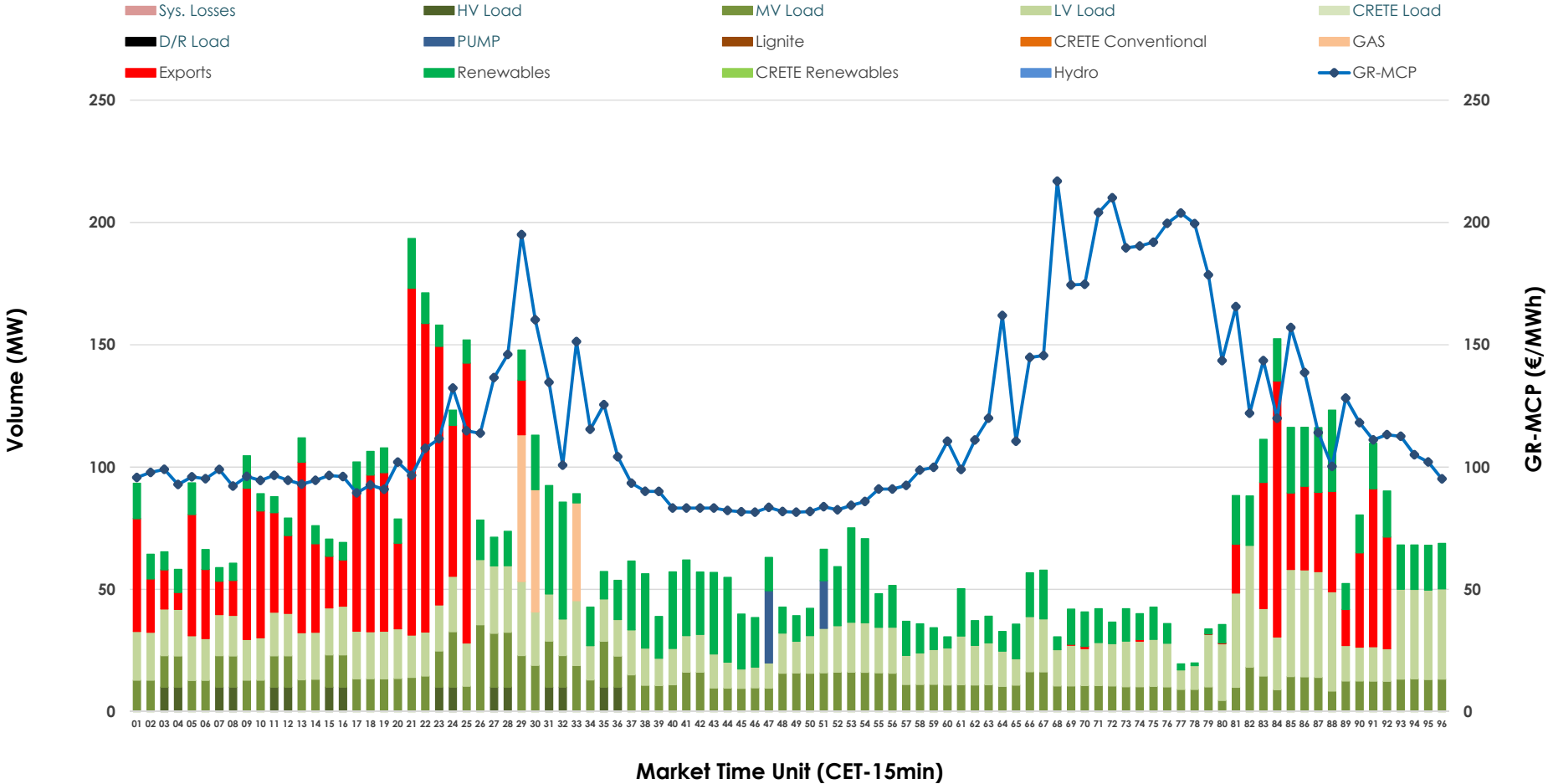


# IDA '1' Market Outlook

03.02.2026 IDA '1' Market - Sell



### 03.02.2026 IDA '1' Market - Buy



### GR Bidding Zone Weekly Figures

Delivery Day	28.01	29.01	30.01	31.01	01.02	02.02	03.02
	👇 -32%	👇 -6%	👆 9%	👆 6%	👆 1%	👆 18%	➡ 0%
<b>Avg.MCP (€/MWh)</b>	91.16	85.73	93.43	98.89	100.31	118.10	118.41
<b>Max.MCP (€/MWh)</b>	157.78	177.61	163.33	152.60	143.74	251.72	216.88
<b>Min.MCP (€/MWh)</b>	26.52	-7.99	33.00	43.71	60.00	80.04	81.53
	👆 71%	👇 -18%	👆 134%	👇 -71%	👆 58%	👇 -36%	👆 38%
<b>Tot.Vol(GWh)</b>	4.39	3.58	8.38	2.46	3.89	2.48	3.43

### Trades by Order Type

Delivery Day		28.01	29.01	30.01	31.01	01.02	02.02	03.02	
<b>Ord Price Type</b>		<b>Sell &amp; Buy Trades in (GWh) per Price Type</b>							<b>(%)</b>
<b>PPT</b>	(S)	0.000	0.000	0.000	0.000	0.000	0.000	0.000	0.00%
<b>HBD</b>	(S)	2.193	1.786	4.172	1.076	1.868	0.922	1.212	70.76%
<b>BLK</b>	(S)	0.000	0.000	0.000	0.000	0.000	0.000	0.000	0.00%
<b>CPL</b>	(S)	0.000	0.003	0.016	0.156	0.077	0.320	0.501	29.24%
<b>PPT</b>	(B)	0.000	0.000	0.000	0.000	0.000	0.000	0.000	0.00%
<b>HBD</b>	(B)	1.508	1.777	3.915	1.033	1.156	1.163	1.262	73.68%
<b>BLK</b>	(B)	0.000	0.000	0.000	0.000	0.000	0.000	0.000	0.00%
<b>CPL</b>	(B)	0.685	0.013	0.273	0.200	0.789	0.079	0.451	26.32%
		<b>Sell &amp; Buy Orders Traded per Price Type</b>							<b>(%)</b>
<b>PPT</b>	(S)	0	0	0	0	0	0	0	0.00%
<b>HBD</b>	(S)	288	153	239	148	73	81	124	100.00%
<b>BLK</b>	(S)	0	0	0	0	0	0	0	0.00%
<b>PPT</b>	(B)	0	0	0	0	0	0	0	0.00%
<b>HBD</b>	(B)	751	932	771	642	726	732	920	100.00%
<b>BLK</b>	(B)	0	0	0	0	0	0	0	0.00%

**MCP** Market Clearing Price (€/MWh)  
**PPT** Priority Price-Taking  
**HBD** Hybrid  
**BLK** Block  
**CPL** Market Coupling Flow

### Trade's Volume Mix

	Sell - MWh	Buy - MWh	
<b>Lignite</b> (0.0%)	0	0	(0.0%)
<b>Crete Conv.</b> (0.0%)	0	0	(0.0%)
<b>Gas</b> (48.6%)	833	38	(2.2%)
<b>Hydro</b> (0.0%)	0	0	(0.0%)
<b>Imports</b> (29.2%)	501		
<b>RES</b> (9.0%)	155	372	(21.7%)
<b>Crete RES</b> (0.0%)	0	0	(0.0%)
<b>HV Load</b> (13.1%)	224	40	(2.3%)
<b>MV Load</b> (0.0%)	0	322	(18.8%)
<b>LV Load</b> (0.0%)	0	479	(27.9%)
<b>Crete Load</b> (0.0%)	0	0	(0.0%)
<b>Pumping</b> (0.0%)	1	12	(0.7%)
<b>Exports</b>		451	(26.3%)
<b>Sys.Losses</b> (0.0%)	0	0	(0.0%)
<b>D/R Load</b> (0.0%)	0	0	(0.0%)

