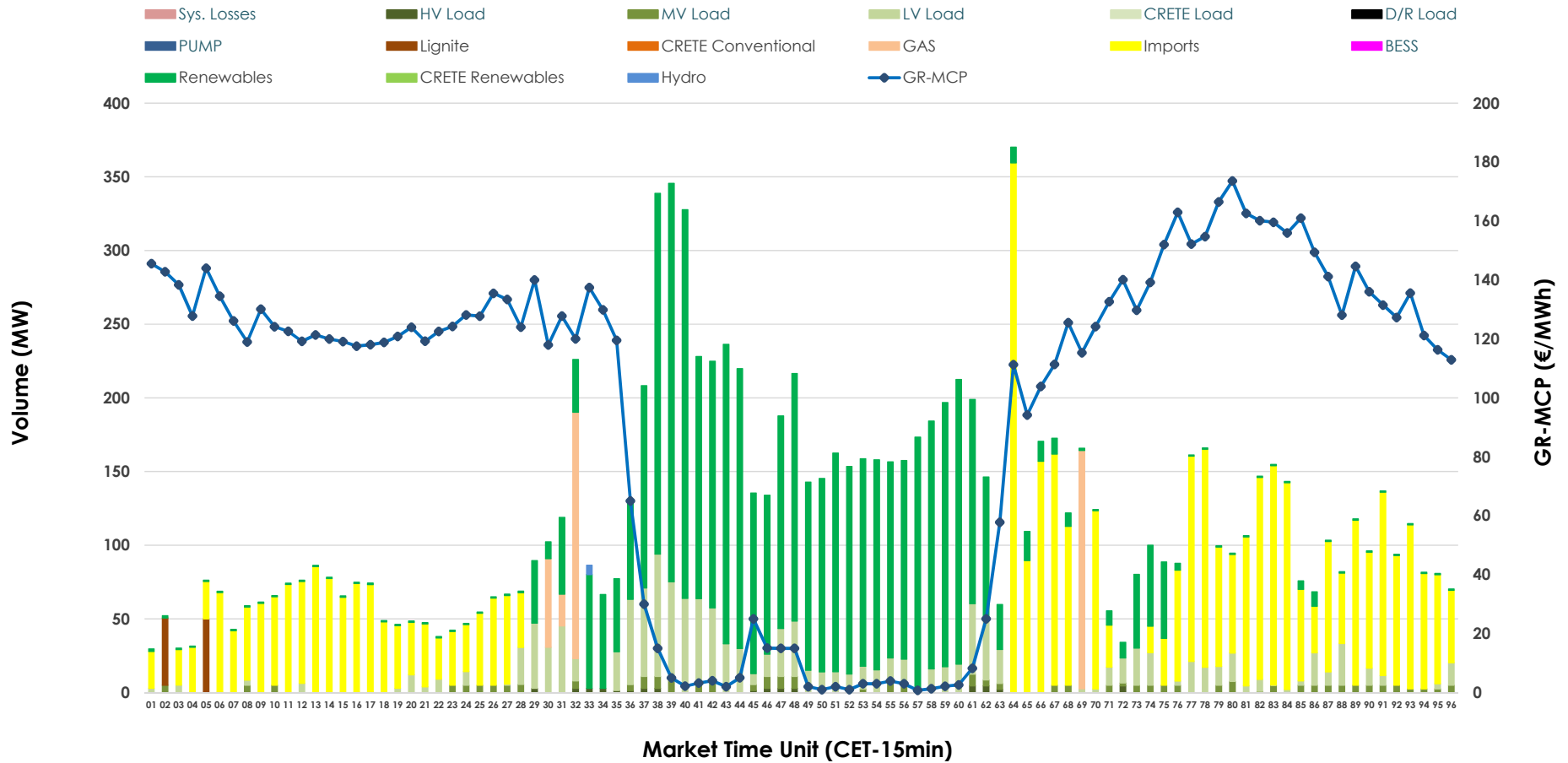


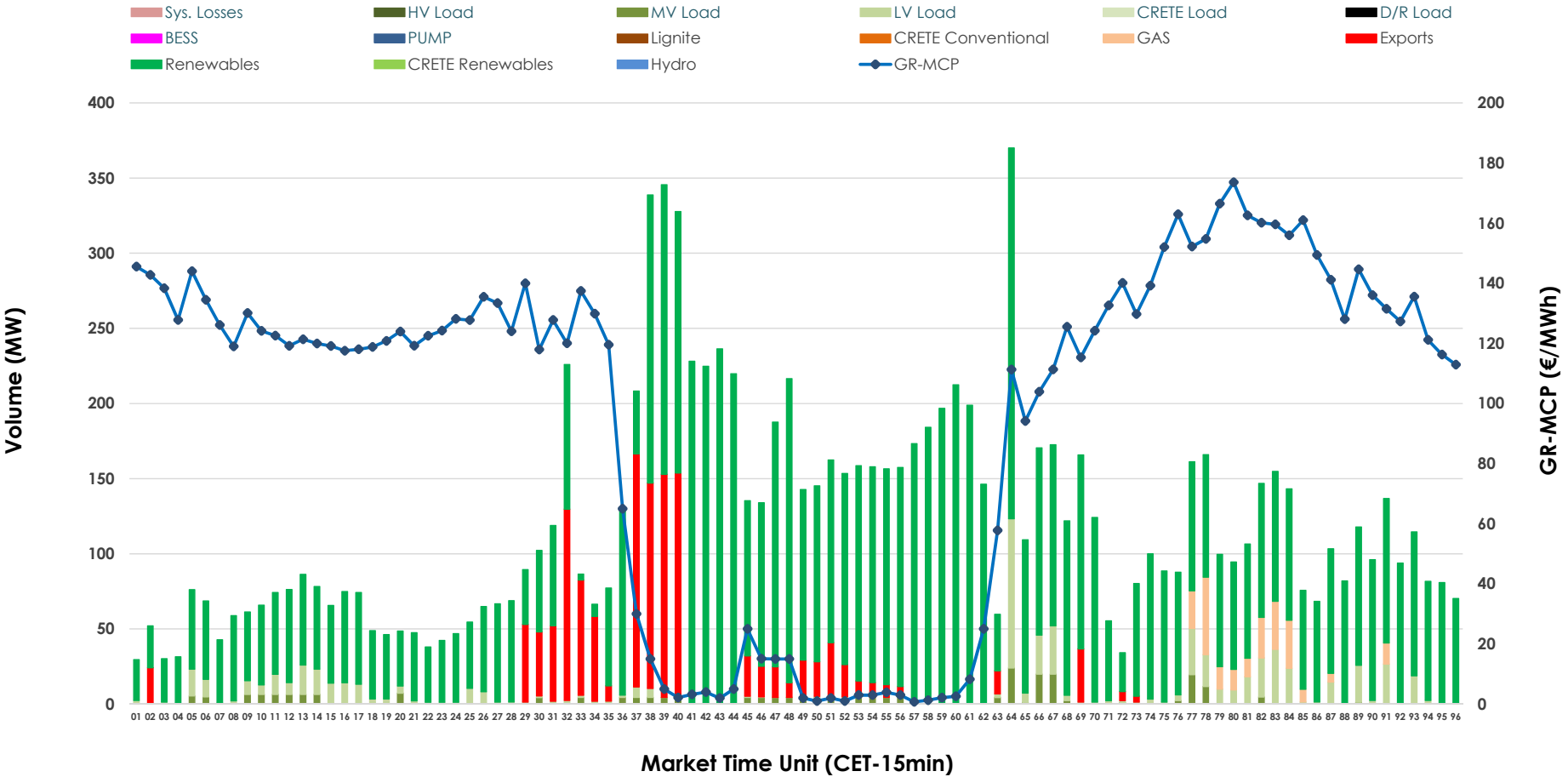


IDA '2' Market Outlook

02.06.2026 IDA '2' Market - Sell



02.06.2026 IDA '2' Market - Buy



GR Bidding Zone Weekly Figures

Delivery Day	27.05	28.05	29.05	30.05	31.05	01.06	02.06
	↗ 15%	↘ -1%	↘ -13%	↗ 13%	↘ -5%	↗ 20%	↘ -7%
Avg.MCP (€/MWh)	93.58	92.19	80.51	90.81	86.46	103.88	96.79
Max.MCP (€/MWh)	268.78	199.16	160.91	201.29	159.14	212.74	173.58
Min.MCP (€/MWh)	-11.11	-1.86	-14.99	-4.54	-0.07	-6.67	0.75
	↘ -7%	↗ 35%	↘ -8%	↘ -30%	↘ -11%	↗ 35%	↗ 37%
Tot.Vol(GWh)	4.02	5.44	5.03	3.54	3.14	4.24	5.80

Trades by Order Type

Delivery Day	27.05	28.05	29.05	30.05	31.05	01.06	02.06	
Ord Price Type	Sell & Buy Trades in (GWh) per Price Type							(%)
PPT (S)	0.000	0.000	0.000	0.000	0.000	0.000	0.000	0.00%
HBD (S)	1.716	1.560	2.192	1.069	0.887	1.649	1.793	61.83%
BLK (S)	0.000	0.000	0.000	0.000	0.000	0.000	0.000	0.00%
CPL (S)	0.292	1.160	0.321	0.700	0.683	0.472	1.107	38.17%
PPT (B)	0.000	0.000	0.000	0.000	0.000	0.000	0.000	0.00%
HBD (B)	1.404	2.256	1.172	1.405	1.182	1.661	2.573	88.73%
BLK (B)	0.000	0.000	0.000	0.000	0.000	0.000	0.000	0.00%
CPL (B)	0.604	0.464	1.341	0.364	0.388	0.459	0.327	11.27%
	Sell & Buy Orders Traded per Price Type							(%)
PPT (S)	0	0	0	0	0	0	0	0.00%
HBD (S)	405	300	377	161	149	321	335	100.00%
BLK (S)	0	0	0	0	0	0	0	0.00%
PPT (B)	0	0	0	0	0	0	0	0.00%
HBD (B)	446	421	391	435	357	592	736	100.00%
BLK (B)	0	0	0	0	0	0	0	0.00%

- MCP** Market Clearing Price (€/MWh)
- PPT** Priority Price-Taking
- HBD** Hybrid
- BLK** Block
- CPL** Market Coupling Flow

Trade's Volume Mix

	Sell - MWh	Buy - MWh	
Lignite (0.8%)	24	0	(0.0%)
Crete Conv. (0.0%)	0	0	(0.0%)
Gas (3.5%)	103	59	(2.0%)
Hydro (0.1%)	2	0	(0.0%)
Imports (38.2%)	1,107		
RES (42.8%)	1,240	2,280	(78.6%)
Crete RES (0.0%)	0	0	(0.0%)
BESS (0.0%)	0	0	(0.0%)
HV Load (0.4%)	12	0	(0.0%)
MV Load (2.3%)	66	69	(2.4%)
LV Load (12.0%)	347	165	(5.7%)
Crete Load (0.0%)	0	0	(0.0%)
Pumping (0.0%)	0	0	(0.0%)
Exports		327	(11.3%)
Sys.Losses (0.0%)	0	0	(0.0%)
D/R Load (0.0%)	0	0	(0.0%)

